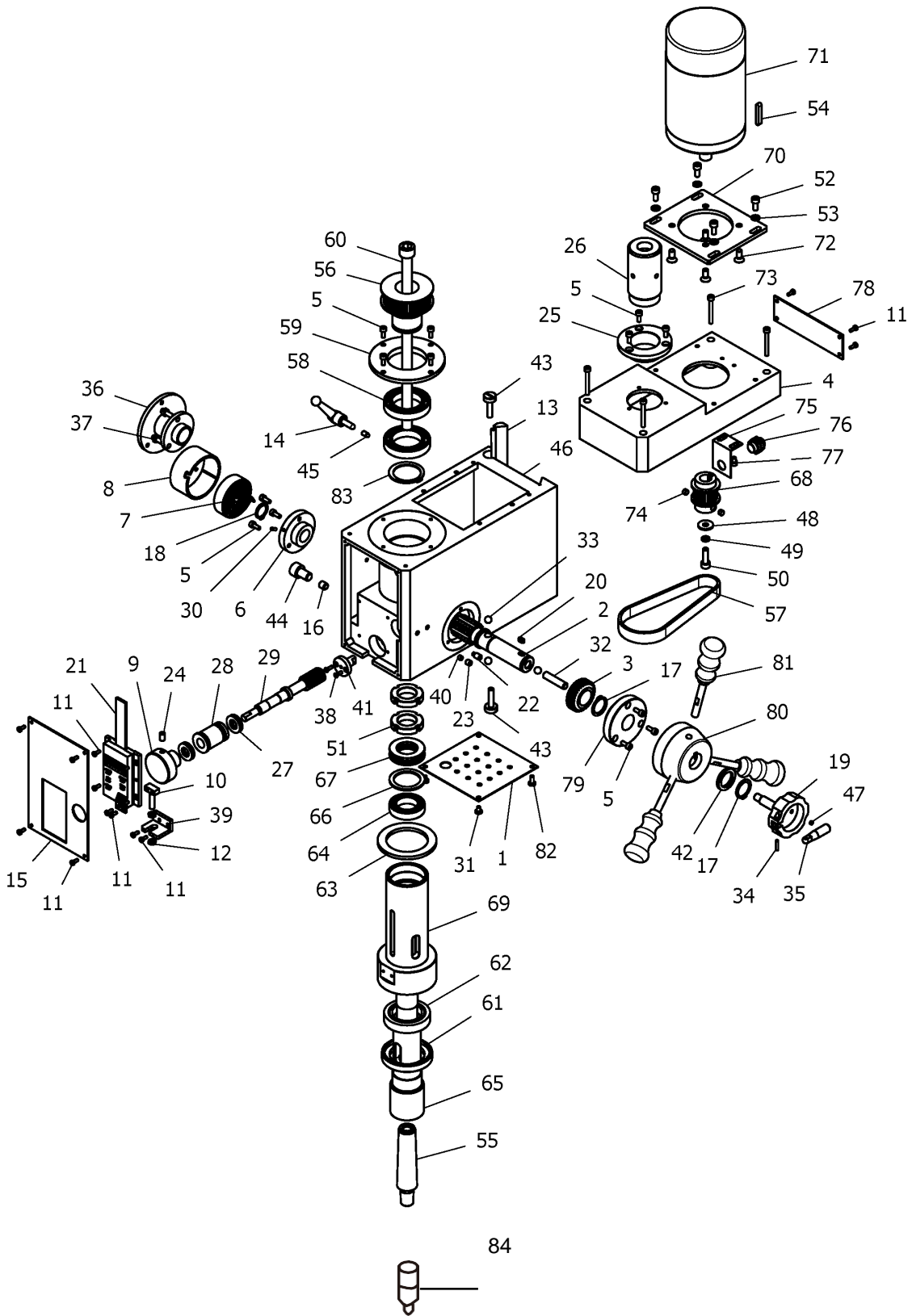


Детализовка (1) фрезерно-сверлильного станка JMD-16S



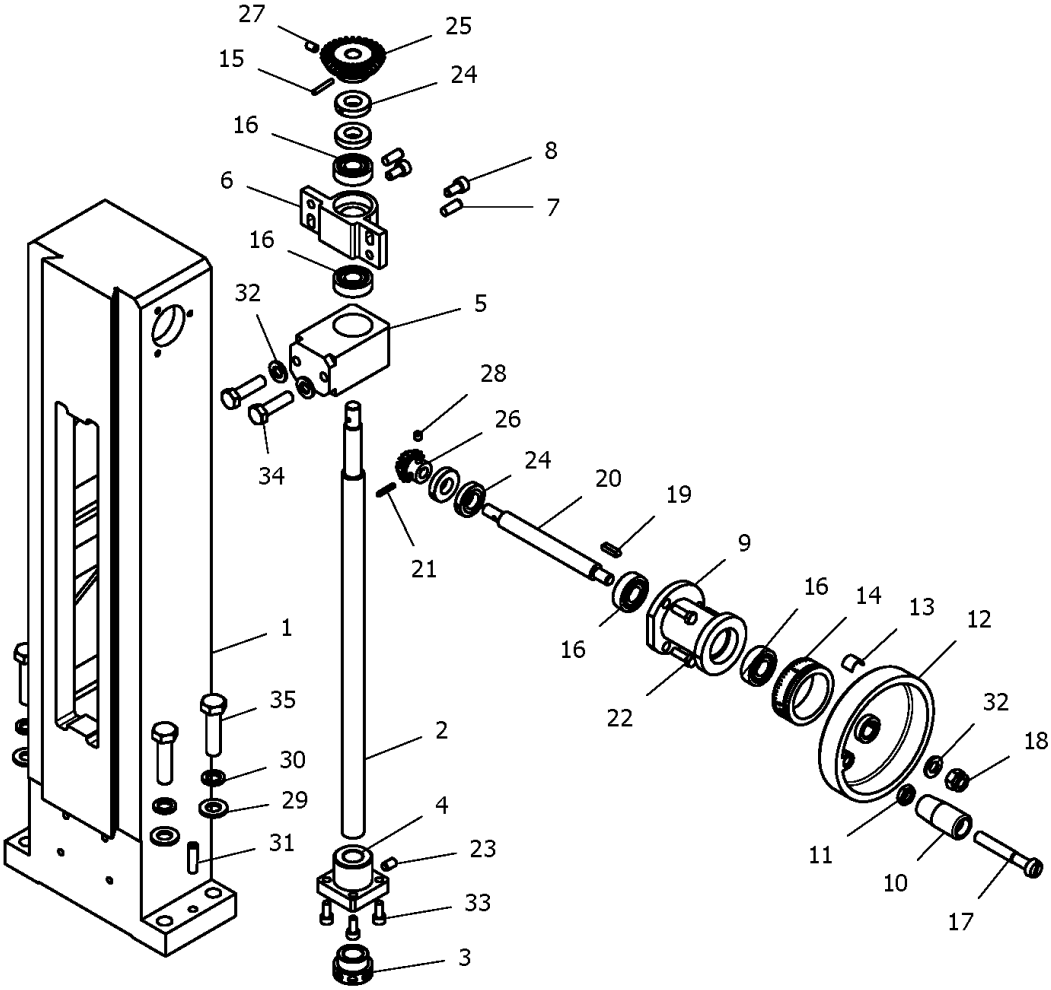
Детализовка фрезерно-сверлильного станка JMD-16S

No.	Артикул	Описание	Размер	Кол-во
1	JMD16S-I-01	Base plate		1
2	JMD16S-I-02	Gear shaft		1
3	JMD16S-I-03	Bevel gear		1
4	JMD16S-I-04	Box cover		1
5	JMD16S-I-05	Hexagon round head cap screw	M4X10	13
6	JMD16S-I-06	Shaft gear left support flange		1
7	JMD16S-I-07	Clock spring		1
8	JMD16S-I-08	Clock spring cover		1
9	JMD16S-I-09	Fine feeding handwheel		1
10	JMD16S-I-10	Display square screw		1
11	JMD16S-I-11	Cross recessed small pan head screw Z	M3X8	16
12	JMD16S-I-12	Hexagon headed nut	M5	2
13	JMD16S-I-13	Bevel wedge		1
14	JMD16S-I-14	Small handle assembly		1
15	JMD16S-I-15	Panel		1
16	JMD16S-I-16	Spindle sleeve locking shaft		1
17	JMD16S-I-17	Check ring	20	2
18	JMD16S-I-18	Check ring 16	16	1
19	JMD16S-I-19	Worm gear locking handle		1
20	JMD16S-I-20	Parallel key	4X8	1
21	JMD16S-I-21	Display assembly		1
22	JMD16S-I-22	Slotted headless set screws round end	M6X12	1
23	JMD16S-I-23	Inner six angle fastening screws-flat end	M6X6	1
24	JMD16S-I-24	Inner six angle fastening screws-flat end	M6X10	1
25	JMD16S-I-25	Spindle up dust guard I		1
26	JMD16S-I-26	Spindle up dust guard II		1
27	JMD16S-I-27	Thrust ball bearing single 7/70		2
28	JMD16S-I-28	Worm eccentric sleeve		1
29	JMD16S-I-29	Worm shaft		1
30	JMD16S-I-30	Spring round pin	3X8	1
31	JMD16S-I-31	Cross recessed small pan head screw H	M3X8	2
32	JMD16S-I-32	Locking small shaft		1
33	JMD16S-I-33	Ball	8	3
34	JMD16S-I-34	Round pin	A3X14	1
35	JMD16S-I-35	Assist small handle		1
36	JMD16S-I-36	Attachment bracket		1
37	JMD16S-I-37	Hexagon headed bolt	M5X12	3
38	JMD16S-I-38	Cross recessed counter head screws H	M3X10	2
39	JMD16S-I-39	Display fixed bracket		1
40	JMD16S-I-40	Eccentric sleeve locking block		1
41	JMD16S-I-41	Spindle sleeve position shaft		1
42	JMD16S-I-42	Adjust washer		1
43	JMD16S-I-43	Wedge screw		2
44	JMD16S-I-44	Hexagon round head cap screw	M10X16	1
45	JMD16S-I-45	Tighten the top rod		1
46	JMD16S-I-46	Spindle box		1
47	JMD16S-I-47	Magnet	Φ4X2	1
48	JMD16S-I-48	washer	6	1
49	JMD16S-I-49	Spring washer	6	1
50	JMD16S-I-50	Hexagon round head cap screw	M6X20	1
51	JMD16S-I-51	Slotted round nut	M24X1.5	2
52	JMD16S-I-52	Hexagon round head cap screw	M5X12	4
53	JMD16S-I-53	Washer	5	4

Деталировка фрезерно-сверлильного станка JMD-16S

No.	Артикул	Описание	Размер	Кол-во
54	JMD16S-I-54	Flat key	5X30	1
55	JMD16S-I-55	B16 taper shank		1
56	JMD16S-I-56	Spindle timing pulley		1
57	JMD16S-I-57	Timing belt		1
58	JMD16S-I-58	Deep groove ball bearing	1080907	2
59	JMD16S-I-59	Bearing location flange		1
60	JMD16S-I-60	Locking bar		1
61	JMD16S-I-61	Locking nut		1
62	JMD16S-I-62	Cone roller bearing	32907	1
63	JMD16S-I-63	Sleeve limit washer		1
64	JMD16S-I-64	Deep groove ball bearing	1080905	1
65	JMD16S-I-65	Spindle	MT3	1
66	JMD16S-I-66	Washer		1
67	JMD16S-I-67	Thrust ball bearing single	8105	1
68	JMD16S-I-68	Motor timing pulley		1
69	JMD16S-I-69	Spindle sleeve		1
70	JMD16S-I-70	Motor connect plate		1
71	JMD16S-I-71	DC motor	600W	1
72	JMD16S-I-72	Cross recessed counter head screws H	M6X14	4
73	JMD16S-I-73	Hexagon round head cap screw	M4X35	4
74	JMD16S-I-74	Magnet steel	Φ6	2
75	JMD16S-I-75	Probe bracket		1
76	JMD16S-I-76	Probe subassembly		1
77	JMD16S-I-77	Hexagon round head cap screw	M4X6	2
78	JMD16S-I-78	Cover plate		1
79	JMD16S-I-79	Shaft gear right support flange		1
80	JMD16S-I-80	Handle seat		1
81	JMD16S-I-81	Handle assembly		3
82	JMD16S-I-82	Cross recessed small pan head screw H	M4X10	2
83	JMD16S-I-83	Check ring	35	1
84	JMD16S-I-84	Drill chuck		1

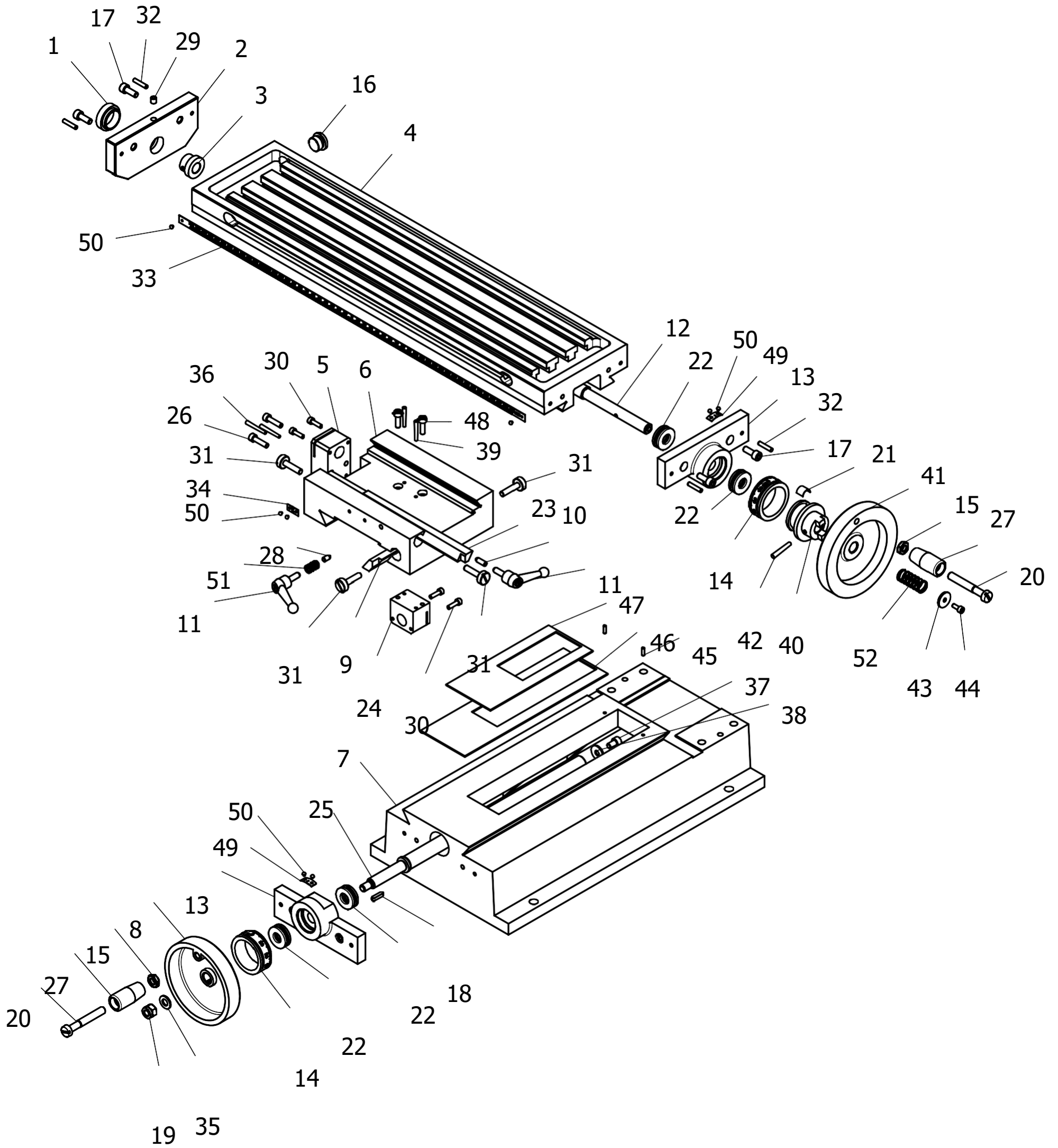
Деталировка (2) фрезерно-сверлильного станка JMD-16S



Деталировка фрезерно-сверлильного станка JMD-16S

No.	Артикул	Описание	Размер	Кол-во
1	JMD16S-II-01	Column		1
2	JMD16S-II-02	Metric rise and down leadscrew		1
3	JMD16S-II-03	Metric rise and down locking nut		1
4	JMD16S-II-04	Metric rise and down leadscrew nut		1
5	JMD16S-II-05	Column nut support		1
6	JMD16S-II-06	Leadscrew support		1
7	JMD16S-II-07	Taper pins with internal thread	6X16	2
8	JMD16S-II-08	Hexagon socket head cap screw	M6X12	2
9	JMD16S-II-09	Rise and down support seat		1
10	JMD16S-II-10	Handle		1
11	JMD16S-II-11	Hex nut	M8	1
12	JMD16S-II-12	Handle wheel		1
13	JMD16S-II-13	Spring piece		1
14	JMD16S-II-14	Metric rise and down scale dial		1
15	JMD16S-II-15	Spring round pin	3X20	1
16	JMD16S-II-16	Deep groove ball bearing	6001	4
17	JMD16S-II-17	Slotted large cheese head screws	8X55	1
18	JMD16S-II-18	Hex locking nut	M8	1
19	JMD16S-II-19	Parallet key	4X16	1
20	JMD16S-II-20	Rise and down shaft		1
21	JMD16S-II-21	Spring round pin	3X16	1
22	JMD16S-II-22	Hexagon headed bolt	M5X16	3
23	JMD16S-II-23	Inner six angle locking screws-flast end	M6X10	1
24	JMD16S-II-24	Locking nut		4
25	JMD16S-II-25	Big bevel gear wheel		1
26	JMD16S-II-26	Small bevel gear wheel		1
27	JMD16S-II-27	Inner six angle locking screws-cone end	M5X8	1
28	JMD16S-II-28	Inner six angle locking screws-cone end	M5X5	1
29	JMD16S-II-29	washer	10	4
30	JMD16S-II-30	spring washer	10	4
31	JMD16S-II-31	Taper pins with internal thread	6X24	2
32	JMD16S-II-32	Washer	8	3
33	JMD16S-II-33	Hexagon socket head cap screw	M8X30	4
34	JMD16S-II-34	Hexagon headed bolt	M8X30	2
35	JMD16S-II-35	Hexagon headed bolt	M10X40	4

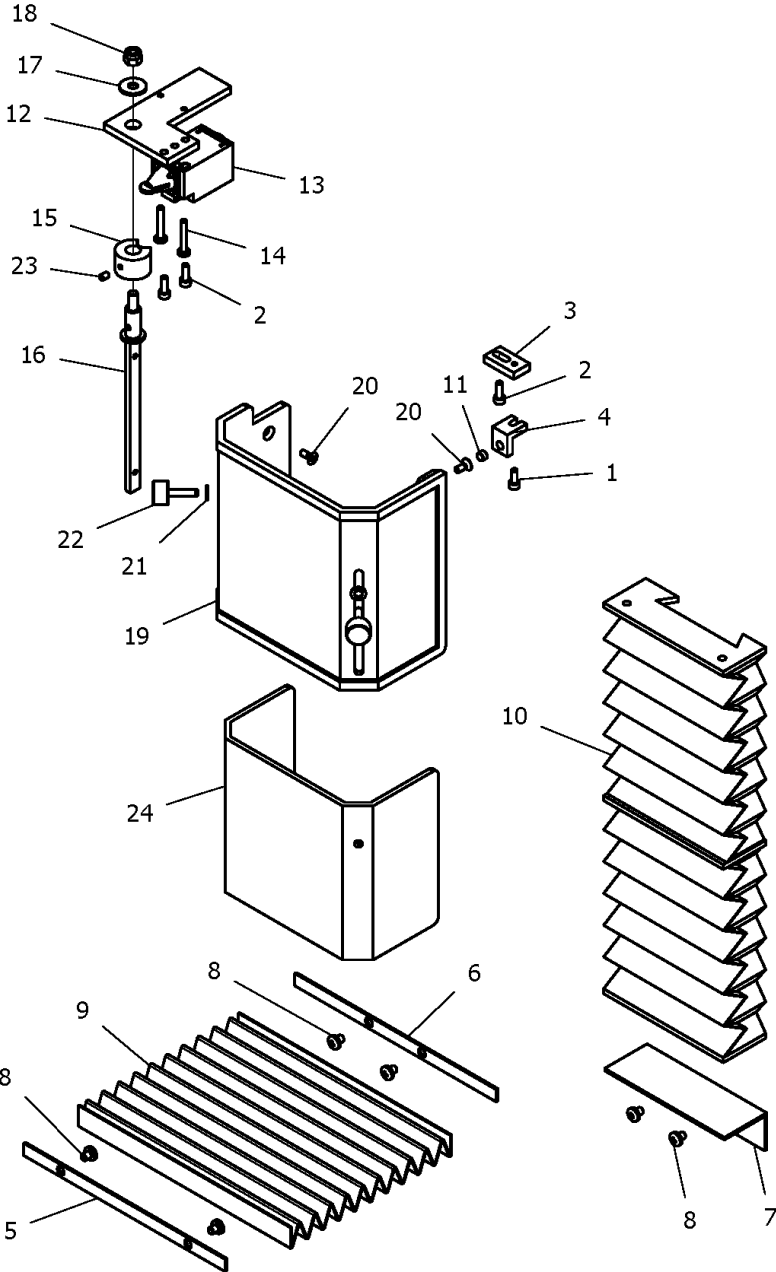
Детализовка (3) фрезерно-сверлильного станка JMD-16S



Деталировка фрезерно-сверлильного станка JMD-16S

No.	Артикул	Описание	Размер	Кол-во
1	JMD16S-III-01	The left bracket cover		1
2	JMD16S-III-02	Left cover		1
3	JMD16S-III-03	Longitudinal leadscrew rod bracket left sleeve		1
4	JMD16S-III-04	Work table		1
5	JMD16S-III-05	Metric longitudinal leadscrew nut		1
6	JMD16S-III-06	Saddle		1
7	JMD16S-III-07	Base		1
8	JMD16S-III-08	Handwheel		1
9	JMD16S-III-09	Cross bevel wedge		1
10	JMD16S-III-10	Longitudinal wedge locking crown bar		1
11	JMD16S-III-11	Small handle assembly		2
12	JMD16S-III-12	Metric longjitudinal leadscrew		1
13	JMD16S-III-13	Longitudinal/cross leadscrew bearing seat		2
14	JMD16S-III-14	Metric longitudinal/cross scale dial		2
15	JMD16S-III-15	Hexagon nut	M8	2
16	JMD16S-III-16	Plug		1
17	JMD16S-III-17	Hexagon socket head cap screw	M6X16	6
18	JMD16S-III-18	Parallet key	4X16	1
19	JMD16S-III-19	Hexagon locking nut	M8	1
20	JMD16S-III-20	Slotted large cheese head screws	85X55	2
21	JMD16S-III-21	Sping piece		2
22	JMD16S-III-22	Thrust ball bearing	8101	4
23	JMD16S-III-23	Longjitudinal bevel wedge		1
24	JMD16S-III-24	Metric cross leadscrew nut		1
25	JMD16S-III-25	Metric cross leadscrew		1
26	JMD16S-III-26	Hexagon socket head cap screw	M5X20	2
27	JMD16S-III-27	Handle		2
28	JMD16S-III-28	Tighten the top rod		1
29	JMD16S-III-29	Pressure with pressure column oil cup	6	1
30	JMD16S-III-30	Hexagon socket head cap screw	M4X14	4
31	JMD16S-III-31	Wedge screw		4
32	JMD16S-III-32	Round pin	A4X20	6
33	JMD16S-III-33	Scale height		1
34	JMD16S-III-34	Zero lebel		1
35	JMD16S-III-35	Washer	8	1
36	JMD16S-III-36	Taper pin	A3X30	2
37	JMD16S-III-37	Hexagon socket head cap screw	M6X10	1
38	JMD16S-III-38	Washer	6	1
39	JMD16S-III-39	Taper pin	B3X26	2
40	JMD16S-III-40	leadscrew clutch		1
41	JMD16S-III-41	X-axis leadscrew hand wheel		1
42	JMD16S-III-42	taper pin	A4X28	1
43	JMD16S-III-43	washer		1
44	JMD16S-III-44	Hexagon socket head cap screw	M4X10	1
45	JMD16S-III-45	round pin	A3X10	2
46	JMD16S-III-46	splash guard I		1
47	JMD16S-III-47	splash guard II		1
48	JMD16S-III-48	Hexagon socket head cap screw	M5X16	2
49	JMD16S-III-49	indicator		2
50	JMD16S-III-50	Label rivet	2X4	8
51	JMD16S-III-51	Spring		1
52	JMD16S-III-52	Spring		1

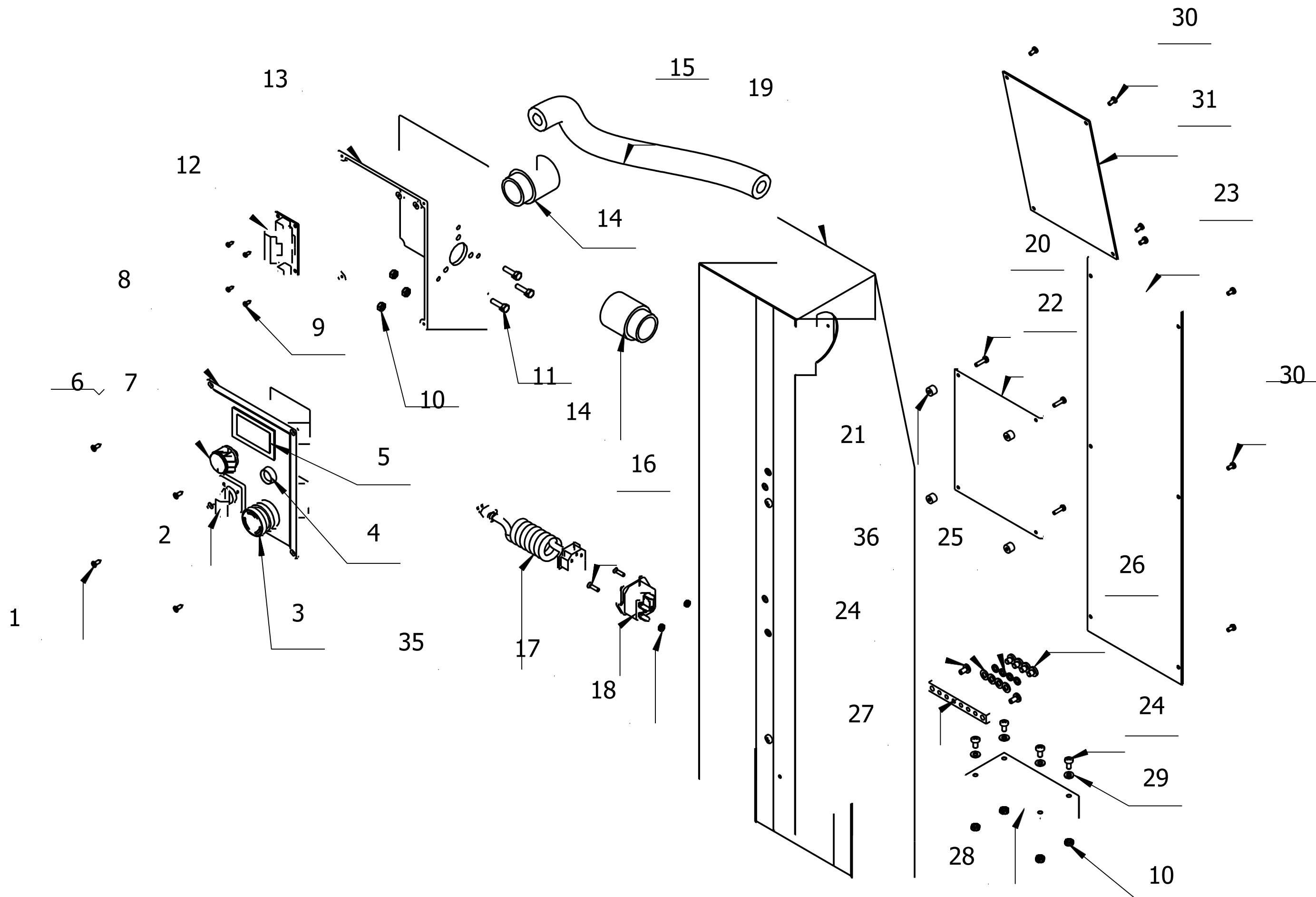
Детализовка (4) фрезерно-сверлильного станка JMD-16S



Деталировка фрезерно-сверлильного станка JMD-16S

No.	Артикул	Описание	Размер	Кол-во
1	JMD16S-IV-01	Hexagon socket head cap screw	M4X10	1
2	JMD16S-IV-02	Hexagon socket head cap screw	M4X12	3
3	JMD16S-IV-03	connect plate		1
4	JMD16S-IV-04	block		1
5	JMD16S-IV-05	filler strip		1
6	JMD16S-IV-06	filler strip		1
7	JMD16S-IV-07	Shield baffle		1
8	JMD16S-IV-08	Cross recessed counter head screws	M5X6	6
9	JMD16S-IV-09	Dust guard		1
10	JMD16S-IV-10	Rise and down guideway cover		1
11	JMD16S-IV-11	Ø6 Magnet steel		5
12	JMD16S-IV-12	Support plate		1
13	JMD16S-IV-13	Safety limit switch		1
14	JMD16S-IV-14	Cross recessed counter head screws	M4X25	2
15	JMD16S-IV-15	Spacer bush		1
16	JMD16S-IV-16	Rotate shaft		1
17	JMD16S-IV-17	washer	6	1
18	JMD16S-IV-18	Hexagon locking nut	M6	1
19	JMD16S-IV-19	Outer protective cover		1
20	JMD16S-IV-20	Cross recessed counter head screws	M4X10	3
21	JMD16S-IV-21	Washer	5	2
22	JMD16S-IV-22	Knurled screws	M5X20	2
23	JMD16S-IV-23	Inner six angle locking screw-cone end	M4X6	1
24	JMD16S-IV-24	The inner shield		1

Детализовка (5) фрезерно-сверлильного станка JMD-16S



Деталировка фрезерно-сверлильного станка JMD-16S

No.	Артикул	Описание	Размер	Кол-во
1	JMD16S-V-01	Tapping screw	ST2.9 x	4
2	JMD16S-V-02	Change-over switch		1
3	JMD16S-V-03	Emergency stop		1
4	JMD16S-V-04	Lampholder		1
5	JMD16S-V-05	Digital readout		1
6	JMD16S-V-06	Potentionmeter	4.7K	1
7	JMD16S-V-07	Speed knob		1
8	JMD16S-V-08	Cover		1
9	JMD16S-V-09	Tapping screw		4
10	JMD16S-V-10	Hexagon headed nut	M4	7
11	JMD16S-V-11	Hexagon headed bolt	M4X16	3
12	JMD16S-V-12	Power panel		1
13	JMD16S-V-13	Electronic box		1
14	JMD16S-V-14	Tube connecter		2
15	JMD16S-V-15	Tube		1
16	JMD16S-V-16	Cross recessed counter head screws	M3X12	2
17	JMD16S-V-17	Power socket		1
18	JMD16S-V-18	Hexagon headed nut	M3	2
19	JMD16S-V-19	Column guild cover		1
20	JMD16S-V-20	Cross recessed small pan head screw	M3X12	4
21	JMD16S-V-21	Foot-pad		4
22	JMD16S-V-22	Main control board	FC600BJ/23	1
23	JMD16S-V-23	Back cover		1
24	JMD16S-V-24	Cross recessed small pan head screw	M4X8	6
25	JMD16S-V-25	Spring spacer	M5	4
26	JMD16S-V-26	Cross recessed small pan head screw	M5X6	4
27	JMD16S-V-27	Grounding bar		1
28	JMD16S-V-28	Blow dust gauze		1
29	JMD16S-V-29	Washer	4	4
30	JMD16S-V-30	Cross recessed small pan head screws	M3X6	10
31	JMD16S-V-31	Cover		1
35	JMD16S-V-35	Power cord with plug-in		1
36	JMD16S-V-36	Tooth washer		4

JMD-16S.....~230V,50Hz

