

J E T

JPM-13CSX THICKNESSER

708524XM 708524XT
230/50/1 400/50/3

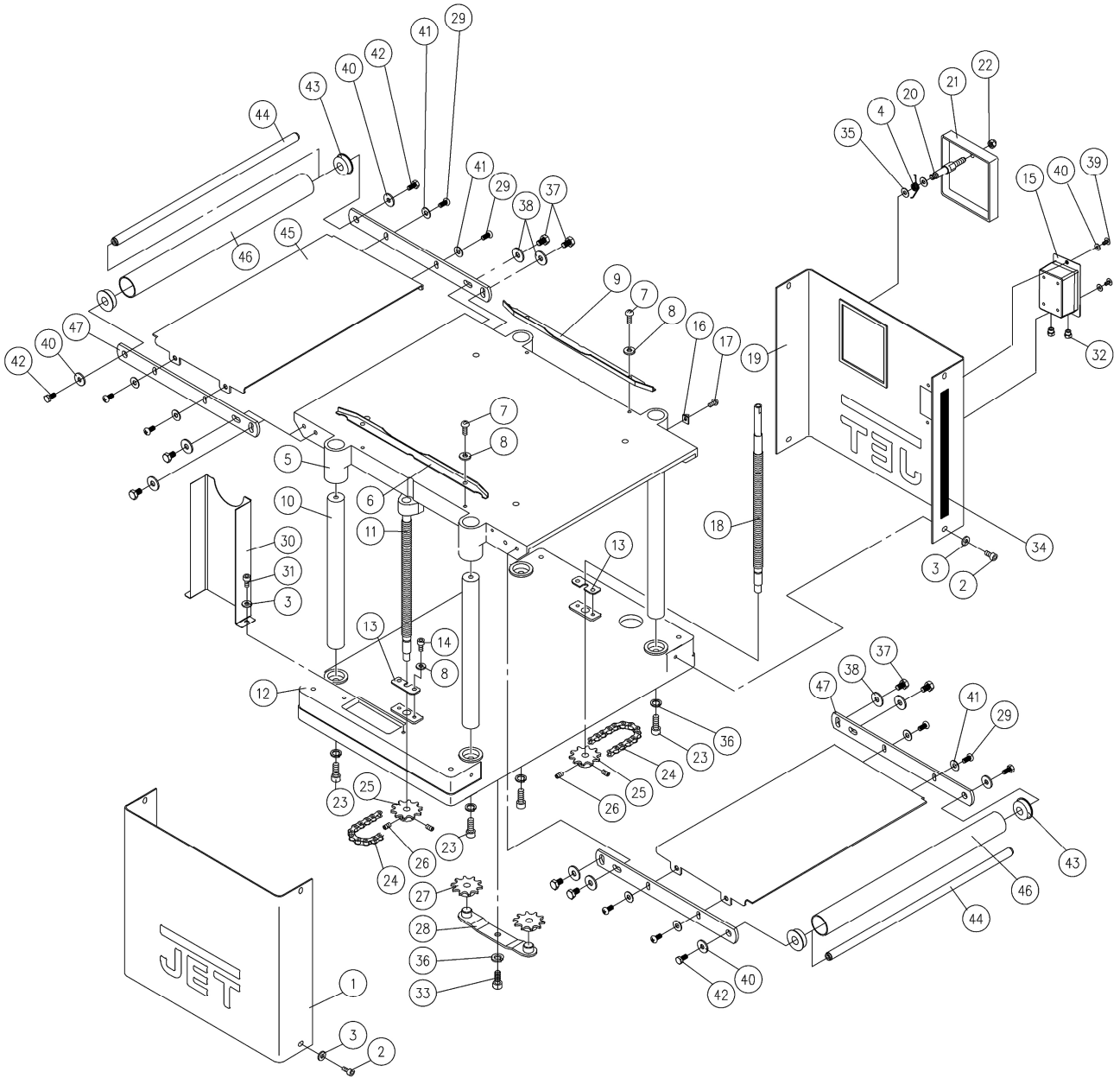
PARTS LIST

Walter Meier (Tool) AG
Tämperlistrasse 5
CH-8117 Fällanden
Switzerland
Phone +41 44 806 47 48
Fax +41 44 806 47 58
jetinfo.eu@waltermeier.com
www.jettools.com



P-708524XM/708524XT 2010/06/25

JPM-13CSX Table and Base Assembly

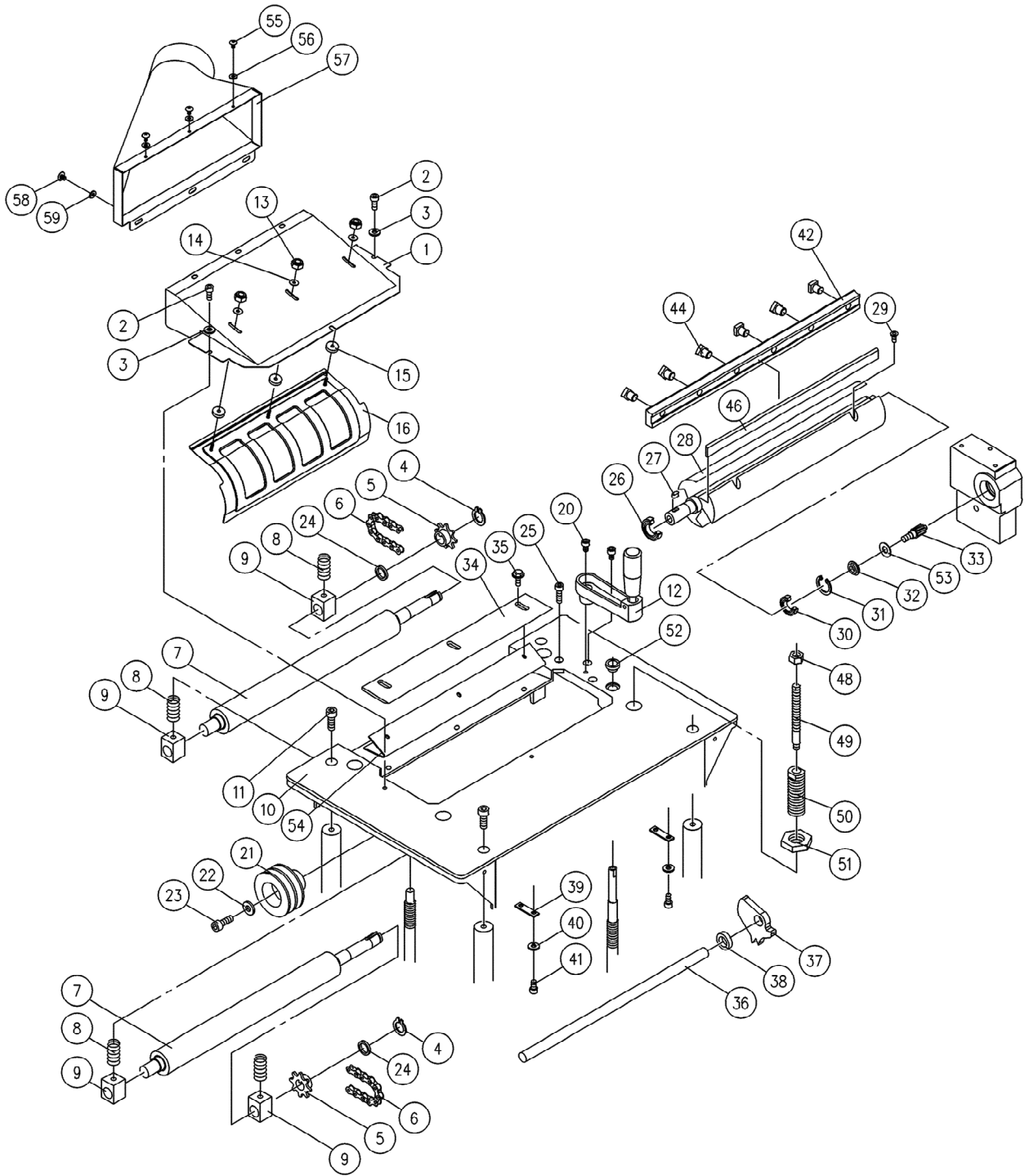


Parts List For The JPM-13CSX Planer

Table and Base Assembly

Index No.	Part No.	Description	Size	Qty.
1	MHA-B01EN	Cover (left)		1
2	TS-150301	Hex Socket Cap Screw	M6x8	8
3	TS-0680021	Flat Washer	1/4	8
4	JPM13-104	Spring		1
5	MHA-B02A	Middle Table		1
6	MGA-B29E	Guide (left)		1
7	TS-153403	Pan Head Machine Screw	M6x10	4
8	TS-155104	Lock Washer	M6	4
9	MGA-B15E	Guide (right)		1
10	MHA-B03EN	Column		4
11	MHA-B04EN	Leadscrew		1
12	MHA-B05EN	Base		1
13	MGA-B09	Anchor Plate		2
14	TS-150303	Hex Socket Cap Screw	M6x12	4
15	60A-119E	Magnetic Switch	KJD18 230V 1PH	1
	60A-119AE	Magnetic Switch	KJD18 400V 3PH	1
16	MHA-B20	Pointer		2
17	TS-153202	Pan Head Machine Screw	M4x8	2
18	MHA-B06EN	Leadscrew		1
19	MHA-B07EN	Cover (right)		1
20	MHA-B08EN	Stud		1
21	MHA-B09	Gear Box Cover		1
22	MHA-B19	Knob		1
23	TS-1504051	Hex Socket Cap Screw	M8x25	4
24	5GF-B07	Chain		1
25	PGE-B14	Sprocket		2
26	TS-152301	Set Screw	M6x6	4
27	PGE-B12	Sprocket		2
28	PGE-B10	Sprocket Idler		1
29	TS-1534042	Pan Head Screw		8
30	MHA-B10EN	Pulley Cover		1
31	TS-150302	Hex Socket Cap Screw	M6x10	2
32	JPM13-132	Strain Relief	PG11	2
33	TS-1504051	Hex Socket Cap Screw	M8x20	1
34	MGA-B04E	Scale (metric)		1
35	JPM13-135	Flat Washer		2
36	TS-155106	Lock Washer	M8	5
37	JPM13-137	Hex Head bolt	M8x12	8
38	TS-1550041	Flat Washer	M8	8
39	JPM13-139	Pan Head Screw	1/4"-20NCx1/2"	2
40	JPM13-140	Flat Washer	M6	6
41	JPM13-141	Flat Washer	6.4*16*1.0t	8
42	TS-1482021	Hex Cap Bolt	M6x12	4
43	PJ020804	Bushing		4
44	MHA-Y02A	Roller Shaft		2
45	JPM13-145	Extension Bed		2
46	MHA-Y02C	Roller		2
47	MHD-Y01AE	Roller Frame	M6	4
	JPM13-148	Extension Table Assembly (Include 43-47)		2

JPM-13CSX Cutterhead And Roller Assembly

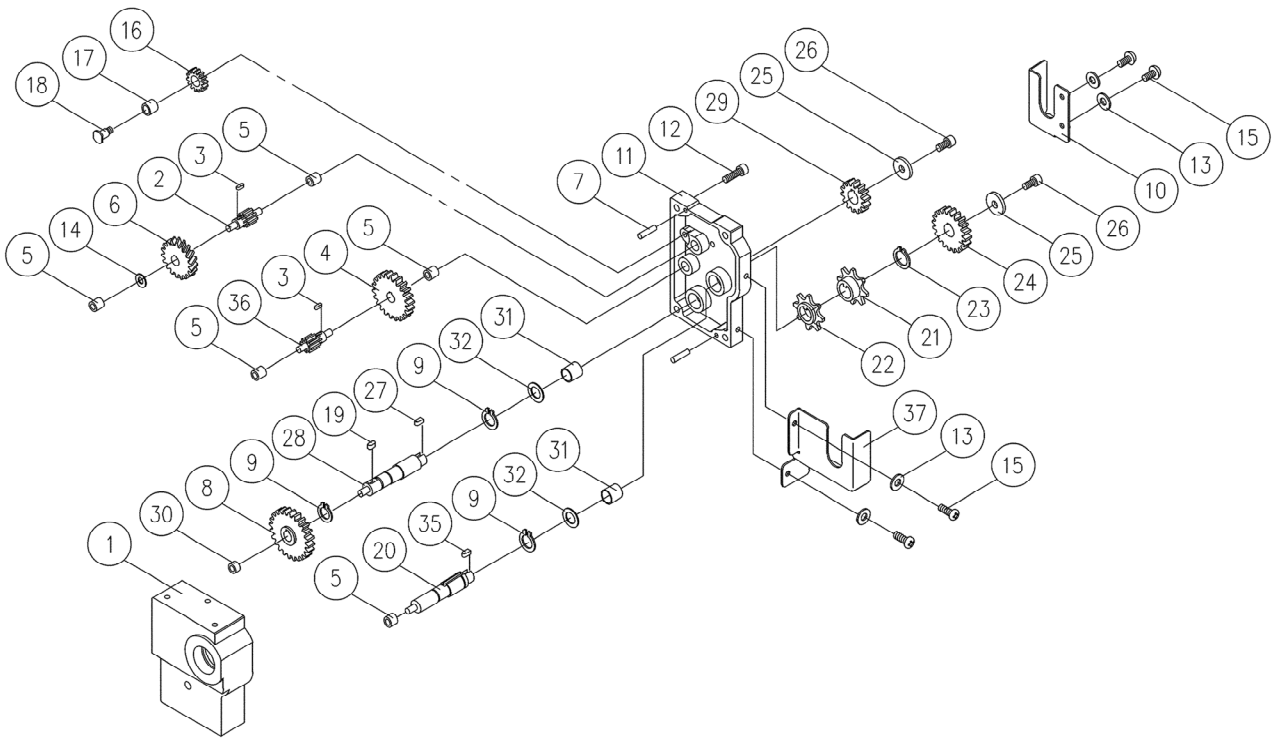


JPM-13CSX Cutterhead And Roller Assembly

Index No.	Part No.	Description	Size	Qty.
.....	MHA-C.....	Dust Hood Assembly CP.....		1
1.....	MHA-C01AE.....	Dust Hood.....		1
2.....	TS-150301.....	Hex Socket Cap Screw.....	M6x8.....	3
3.....	TS-0680021.....	Flat Washer.....	1/4.....	3
4.....	5FA-A10.....	C-Ring.....	STW15.....	2
5.....	PGA-C17.....	Sprocket.....		2
6.....	5GF-B08.....	Chain.....		2
7.....	MHA-C02.....	Feed Roller.....		2
8.....	PGA-C09.....	Spring.....		4
9.....	MGA-C09.....	Bushing.....		4
10.....	MHA-C03EN.....	Head Body.....		1
11.....	TS-150404.....	Hex Socket Cap Screw.....	M8x20.....	4
12.....	PGE-B19A.....	Handle Assembly.....		1
13.....	TS-1540021.....	Hex Nut.....	M4.....	3
14.....	TS-1550021.....	Flat Washer.....	M4.....	3
15.....	JPM13-215.....	Bushing.....		3
16.....	JPM13-216.....	Dust Hood.....		1
20.....	TS-150302.....	Hex Socket Cap Screw *.....	M6x10.....	1
21.....	MHA-C05.....	Spindle Pulley.....		1
22.....	TS-0680021.....	Flat Washer.....	1/4.....	1
23.....	TS-1503051.....	Hex Socket Cap Screw.....	M6x20.....	1
24.....	MHA-C06.....	Spacer.....		2
25.....	TS-150304.....	Hex Socket Cap Screw.....	M6x16.....	2
26.....	BB-6203ZZ.....	Ball Bearing.....		1
27.....	5FK-C06.....	Key.....	5x5x15.....	1
28.....	MHA-C07E.....	Cutterhead.....		1
29.....	TS-151302.....	Flat Head Screw.....	M5x12.....	6
30.....	BB-6202ZZ.....	Ball Bearing.....		1
31.....	5BA-A28.....	C-Ring.....	RTW35.....	1
32.....	MHA-C08.....	Bushing.....		1
33.....	MHA-C09.....	Gear.....		1
34.....	MHA-C10E.....	Chip Deflector.....		1
35.....	5AK-E128.....	Screw.....	M6x12.....	3
36.....	MHA-C11E.....	Anti-Kickback Shaft.....		1
37.....	MGA-C30E.....	Anti-Kickback Finger.....		26
38.....	MGA-C34E.....	Anti-Kickback Collar.....		27
39.....	MGA-C31.....	Bracket.....		2
40.....	TS-155103.....	Lock Washer.....	M5.....	4
41.....	TS-150201.....	Hex Socket Cap Screw.....	M5x8.....	4
42.....	MHA-C12E.....	Lock Bar.....		3
44.....	JPM13-244.....	Hex Cap Bolt.....		18
46.....	MHA-C13.....	Knife.....		3
48.....	TS-1540071.....	Hex Nut.....	M10x1.5.....	4
49.....	MGA-C07.....	Adjustment Screw.....		4
50.....	MGA-C05.....	Adjustment Screw.....		4
51.....	MGA-C06.....	Nut.....		4
52.....	PGE-B13.....	Bushing.....		1
53.....	MHA-C20.....	Washer.....		1
54.....	MHA-C22W.....	Plate.....		1

Index No.	Part No.	Description	Size	Qty.
55.....	TS-1533031	Screw.....	M5x10	3
56.....	TS-1550031	Flat Washer	M5.....	3
57.....	MHA-Y01AWE.....	Dust Chute	1
58.....	HS040703.....	Screw.....	M6x8	3
59.....	TS-1550041	Flat Washer	M6.....	3

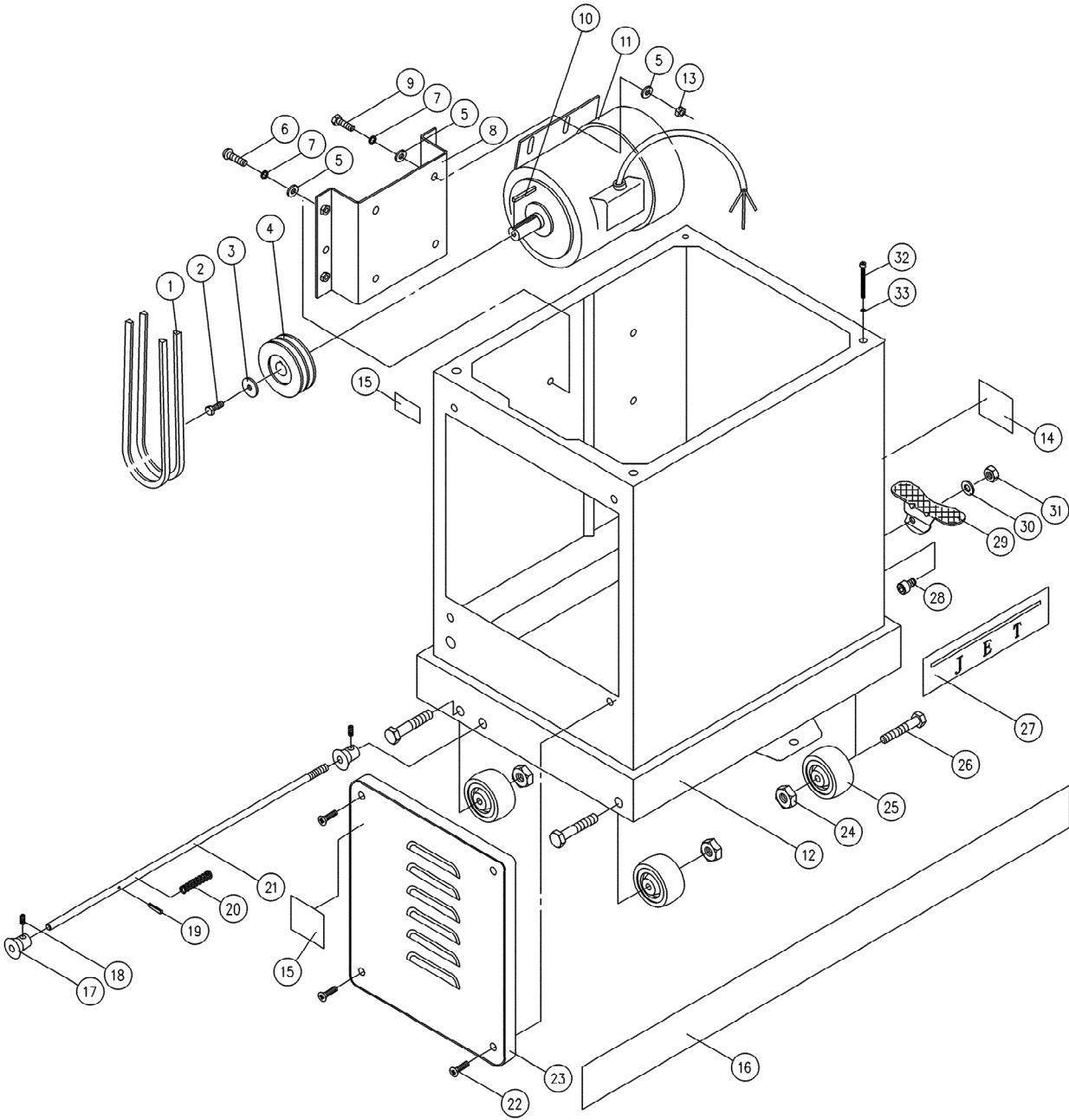
JPM-13CSX Gearbox Assembly



JPM-13CSX Gearbox Assembly

Index No.	Part No.	Description	Size	Qty.
.....	MA-GU	Gearbox Assembly(#'s 1-9, 11-12, 14, 16-32, 35-36)		1
1.....	MHA-G01U	Gearbox Body		2
2.....	MHA-G02.....	Gear Shaft	10T.....	1
3.....	FK-A03	Key	3x3x8	2
4.....	MHA-G03U	Gear.....	44T.....	1
5.....	PGA-M15.....	Bushing.....		5
6.....	MHA-G04U	Gear.....	43T.....	1
7.....	MGA-C28.....	Pin	4x16	2
8.....	MHA-G05U	Gear.....	47T.....	1
9.....	5FA-A07	C-Ring.....	STW12.....	3
10.....	JPM13-310	Chain Cover (Left).....		1
11.....	MHA-G06E	Gear Box Cover		1
12.....	TS-150305	Hex Socket Cap Screw.....	M6x20	4
13.....	TS-1550041	Flat Washer	M6	4
14.....	TS-0680021	Flat Washer	1/4	1
15.....	JPM13-315	Pan Head Screw	M6x8	4
16.....	MHA-G08U	Gear.....	22T	1
17.....	PGA-M12	Bushing.....		1
18.....	MHA-G09.....	Stud Bolt	M6x1.0	1
19.....	MHA-G18.....	Key	5x5x9	1
20.....	MHA-G10N	Shaft		1
21.....	PGA-C17	Sprocket.....		1
22.....	MGA-C32.....	Sprocket.....		1
23.....	5FA-A10	C-Ring.....	STW15.....	1
24.....	MHA-G11U	Gear.....	40T.....	1
25.....	5EB-A08	Washer		1
26.....	TS-150303	Hex Socket Cap Screw.....		2
27.....	5FK-B02	Key	4x4x7	2
28.....	MHA-G12U	Shaft		1
29.....	MHA-G13U	Gear.....	29T.....	1
30.....	MHA-G14U	Bushing.....		1
31.....	MHA-G15N	Bushing.....		2
32.....	MHA-G16.....	Washer		2
35.....	5FK-B05	Key	4x4x12	3
36.....	MHA-G19.....	Gear Shaft	10T.....	3
37.....	JPM13-337	Chain Cover (Right)		1

JPM-13CSX Stand and Motor Assembly



JPM-13CSX Stand and Motor Assembly

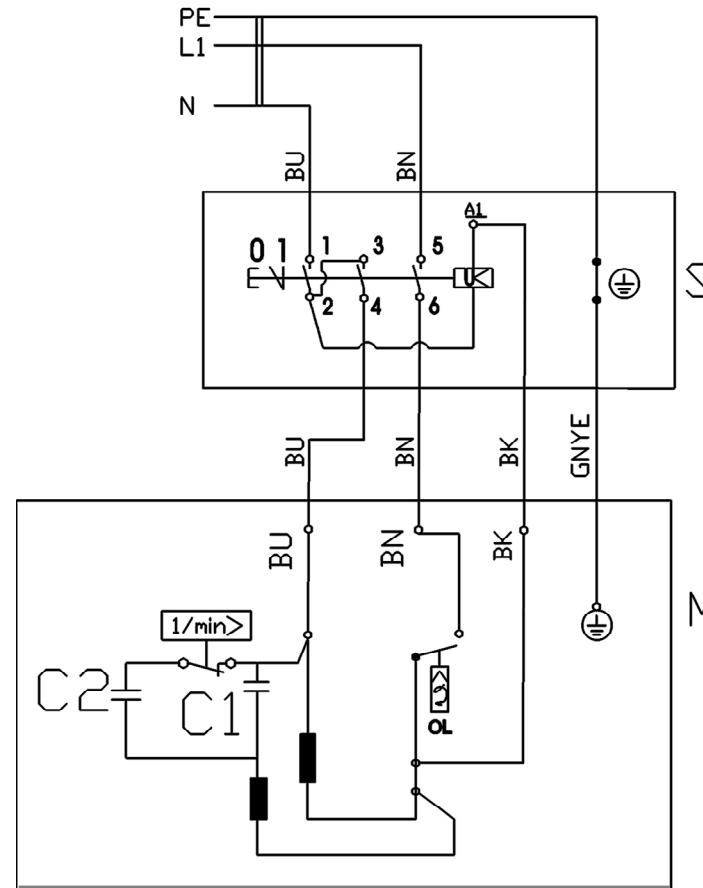
Index No.	Part No.	Description	Size	Qty.
1	VB-M45E	V-Belt		2
2	TS-0051011	Hex Cap Bolt	5/16-18NCx1/2	1
3	PJA-C03	Washer		1
4	MHA-S01E	Motor Pulley		1
5	TS-1550061	Flat Washer	M8	12
6	TS-2288202	Round Cap Hex Socket Slot Screw	M8x1.25x20	4
7	TS-1551061	Lock Washer		8
8	MHD-S02	Motor Bracket		1
9	TS-1490031	Hex Cap Bolt	M8x1.25x20	4
10	5FK-C13A	Key	5x5x30	1
11	MHA-S02AWEN	Motor	1-1/2HP 230V 1PH	1
	MHA-S02AWA	Motor	2HP 400V 3PH	1
12	MHD-S01	Stand		1
13	TS-1540061	Hex Nut	M8x1.25	4
14	JPM13-414	Braking Label		1
15	JPM13-415	Motor Label		1
16	JPM13-416	JET Strip		1
17	PJN-S04	Eccentric Cam		2
18	TS-1523011	Set Screw	M6x6	2
19	HG010911	Spring Pin	4x20	1
20	PG010033	Spring		1
21	MHD-S03	Shaft		1
22	5EA-E06A	Flat Head Screw	M6x12	4
23	PJ100001	Door		1
24	TS-0561031	Lock Nut	3/8-16NC	4
25	PJE-S05	Wheel		4
26	5CA-H16B	Hex Cap Bolt	3/8-16NCx2-1/2	4
27	PG-M02	JET Label		1
28	TS-1503031	Hex Socket Cap Screw	M6x12	1
29	PJN-S02	Foot Brake		1
30	TS-1550071	Washer	M10	1
31	TS-2342101	Lock Nut	M10	1
32	HS020440	Hex Socket Cap Screw	M6x70	4
33	TS-1550041	Flat Washer	M6	4

JPM-13CSX 708524XM

230/50/1

	colour of strands	Litzenfarben	couleur des cordons
BK	black	schwarz	noir
WH	white	weiß	blanc
BU	blue	blau	bleu
YE	yellow	gelb	jaune
RD	red	rot	rouge
BN	brown	braun	brun
GY	grey	grau	gris
GNYE	green-yellow	grün-gelb	vert-jaune
OG	orange	orange	orange
VT	violet	violett	violet

	meaning of symbol	Bedeutung der Zeichen	interprétation
M	motor	Motor	moteur
S	switch	Schalter	interrupteur
C	condenser	Kondensator	condensateur
E	electronic unit	Elektronik Einheit	unité électronique
F	fuse	Sicherung	fusible
RS	reversing switch	Drehrichtungsschalter	commu. droite/gauche
CS	centrifugal switch	Fliehkraftschalter	déclencheur centrifuge
OL	overload cut-off	Überlastschuttschalter	déclencheur surcharge
LS	limit switch	Positionsendschalter	micro



JPM-13CSX 708524XT

400/50/3

	colour of strands	Litzenfarben	couleur des cordons
BK	black	schwarz	noir
WH	white	weiß	blanc
BU	blue	blau	bleu
YE	yellow	gelb	jaune
RD	red	rot	rouge
BN	brown	braun	brun
GY	grey	grau	gris
GNYE	green-yellow	grün-gelb	vert-jaune
OG	orange	orange	orange
VT	violet	violett	violet

	meaning of symbol	Bedeutung der Zeichen	interprétation
M	motor	Motor	moteur
S	switch	Schalter	interrupteur
C	condenser	Kondensator	condensateur
E	electronic unit	Elektronik Einheit	unité électronique
F	fuse	Sicherung	fusible
RS	reversing switch	Drehrichtungsschalter	commu. droite/gauche
CS	centrifugal switch	Fliehkraftschalter	déclencheur centrifuge
OL	overload cut-off	Überlastschuttschalter	déclencheur surcharge
LS	limit switch	Positionsendschalter	micro

