

# **JET**

**JWBS-20Q WOODWORKING BANDSAW**

**708752BM...230/50/1**

**708752BT ...400/50/3**

## **PARTS LIST**

**Walter Meier (Fertigung) AG**

Bahnstrasse 24

8603 Schwerzenbach

Switzerland

Phone +41 44 806 47 48

Fax +41 44 806 47 58

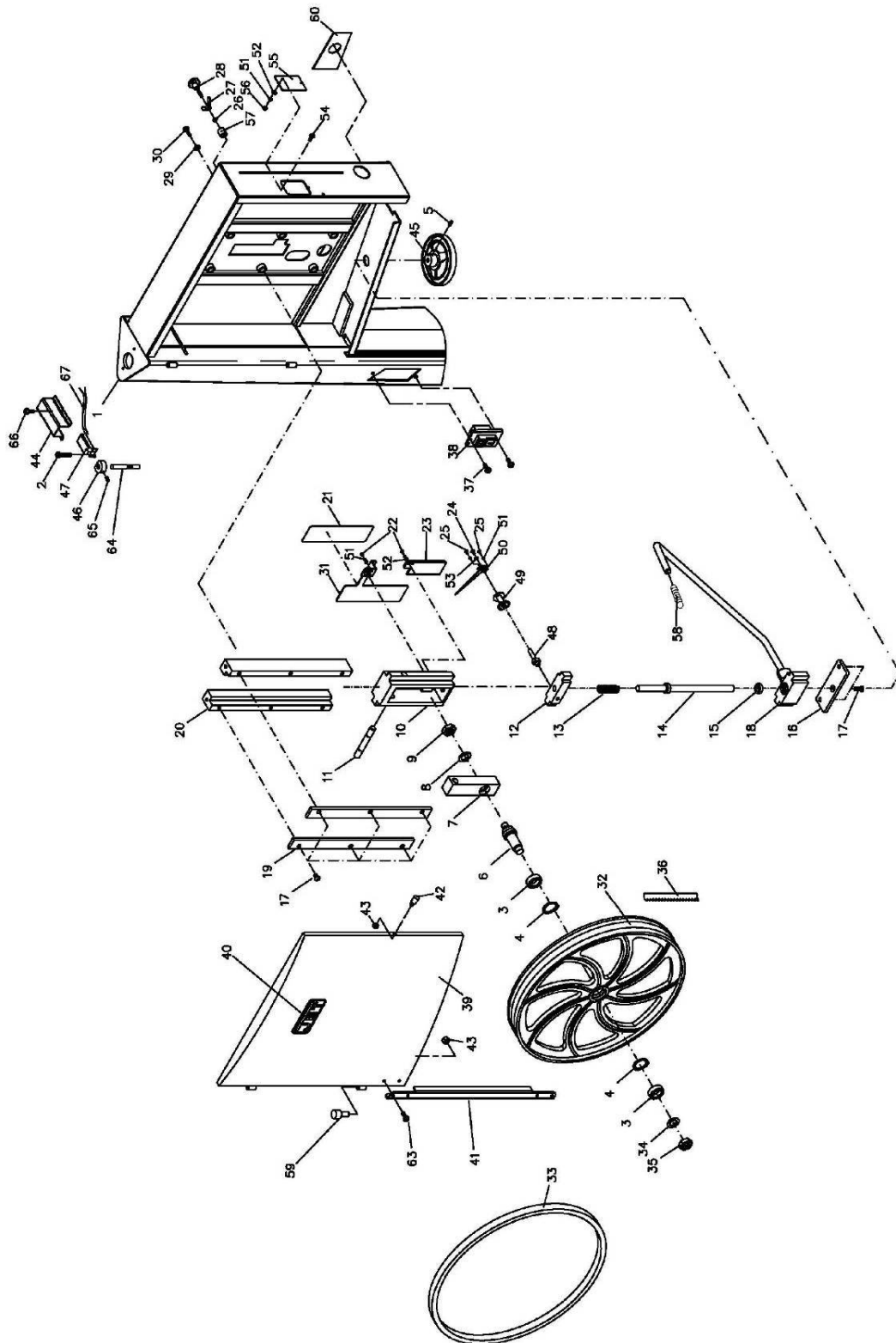
[jetinfo.eu@waltermeier.com](mailto:jetinfo.eu@waltermeier.com)

[www.jettools.com](http://www.jettools.com)



P-708752BM / 708752BT 2009-08-28

# Upper Wheel Assembly

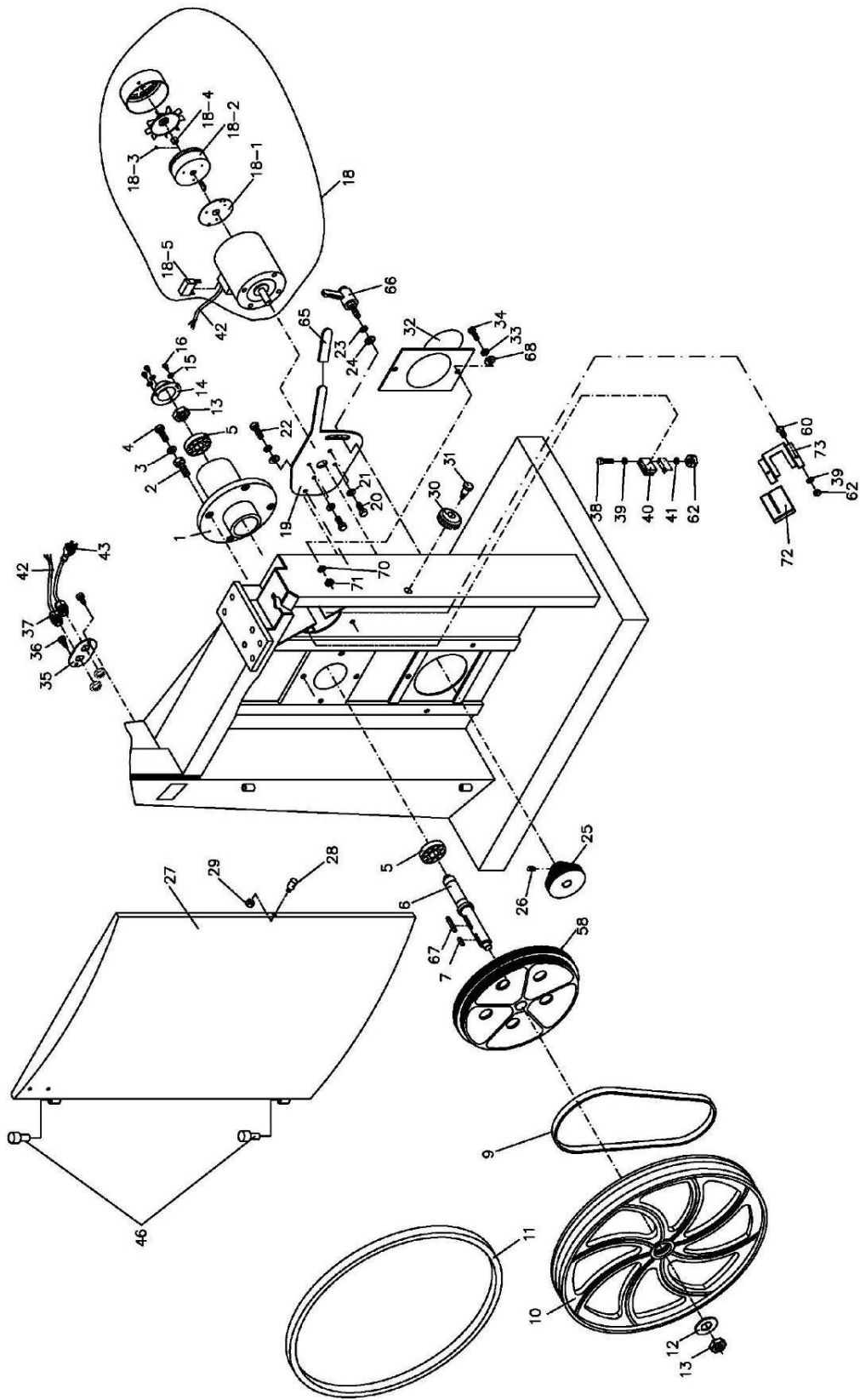


## Upper Wheel Assembly

Index No.	Part No.	Description	Size	Qty
1	JWBS20QT-501E	Saw Body		1
2	TS-2284302	Screw	M4x30	2
3	BB-6205ZZ	Ball Bearing	6205	2
4	JWBS20QT-504	Retaining Ring	R52	2
5	TS-0270051	Set Screw	5/16-18x1/2	1
6	JWBS20QT-506	Upper Wheel Shaft		1
7	JWBS20QT-507	Upper Wheel Shaft Bracket		1
8	TS-155010	Flat Washer	M16	1
9	JWBS18-214	Hex Nut	5/8-18 UNF R.H.	1
10	JWBS20QT-510	Upper Wheel Bracket Base		1
11	JWBS20QT-511	Bracket Shaft		1
12	JWBS20QT-512	Elevator Bracket		1
13	JWBS20QT-513	Spring		1
14	JWBS20QT-514	Adjustment Screw		1
15	JWBS20QT-515	Thrust Bearing		1
16	JWBS20QT-516	Plate		1
17	PM1800-118	Button Head Socket Screw	3/8-16x3/4	8
18	JWBS20QT-518	Blade Tension Arm Assembly		1
19	JWBS20QT-519	Plate		2
20	JWBS20QT-520	Support Bracket		2
21	JWBS20QT-521E	Blade Width/Tension Scale		1
22	TS-0206021	Socket Head Cap Screw	#10-24x1/2	4
23	JWBS20QT-523	Rack		1
24	TS-0254031	Button Head Socket Screw	1/4-20x5/8	1
25	TS-081C022	Pan Head Machine Screw	#10-24x3/8	2
26	TS-0720091	Lock Washer	3/8	1
27	JWBS20QT-527	Wing Nut	3/8	1
28	JWBS20QT-528	Lock Knob		1
29	TS-0680041	Flat Washer	3/8	6
30	TS-0060061	Hex Cap Screw	3/8-16x1-1/4	6
31	JWBS20QT-531	Blade Width Gauge Plate		1
32	JWBS20QT-532	Upper Wheel		1
33	JWBS20-21	Tire		1
34	TS-0680091	Flat Washer	3/4	1
35	JWBS20-22	Hex Nut	3/4-16UNF L.H.	1
36	JWBS20QT-536	Blade	150"L x 1"W x 0.028"T x 3TPI	1
37	TS-1532032	Screw	M4x10	2
38	JWBS18DX-107E	Magnetic Switch	1Ph	1
	JWBS18DX-107AE	Magnetic Switch	3Ph	1
39	JWBS20QT-539E	Upper Front Door		1
40	JWBS18-140	JET Plaque		1
41	JWBS18DX-155AE	Door Plate		1
42	JWBS20-542	Door Stud		1
43	TS-0561011	Hex Nut	1/4x20	5
44	JWBS18-149E	Switch Cover		1
45	JWBS20QT-545	Hand Wheel		1
46	JWBS18-146E	Set Block		1
47	JWBS18DX-147E	Limited Switch		1
48	JWBS20QT-548	Scale Shaft		1
49	JWBS20QT-549	Gear Wheel		1
50	JWBS20QT-550	Pointer		1
51	TS-0720051	Lock Washer	#10	8
52	TS-069204	Flat Washer	#10	6

Index No.	Part No.	Description	Size	Qty
53	TS-0720071	Lock Washer	1/4	2
54	TS-081C032	Pan Head Machine Screw	#10-24x1/2	2
55	JWBS18DX-147	Tracking Window		1
56	TS-0560071	Hex Nut	#10-24	2
57	2013-333	Spacer		1
58	JWBS18DXA-164	Grip		1
59	JWBS18-39A	Door Hinge Pin		2
60	JWBS20QT-560E	Tension Status Label		1
63	TS-0813051	Screw	1/4-20x5/8	4
64	JWBS18-145E	Door Hinge Pin		1
65	TS-0267041	Set Screw		1
66	TS-1480031	Screw	M4x12	2
67	JWBS18DX-151E	Switch Cord (Switch to Limit Switch)		1

# Lower Wheel and Motor Assembly

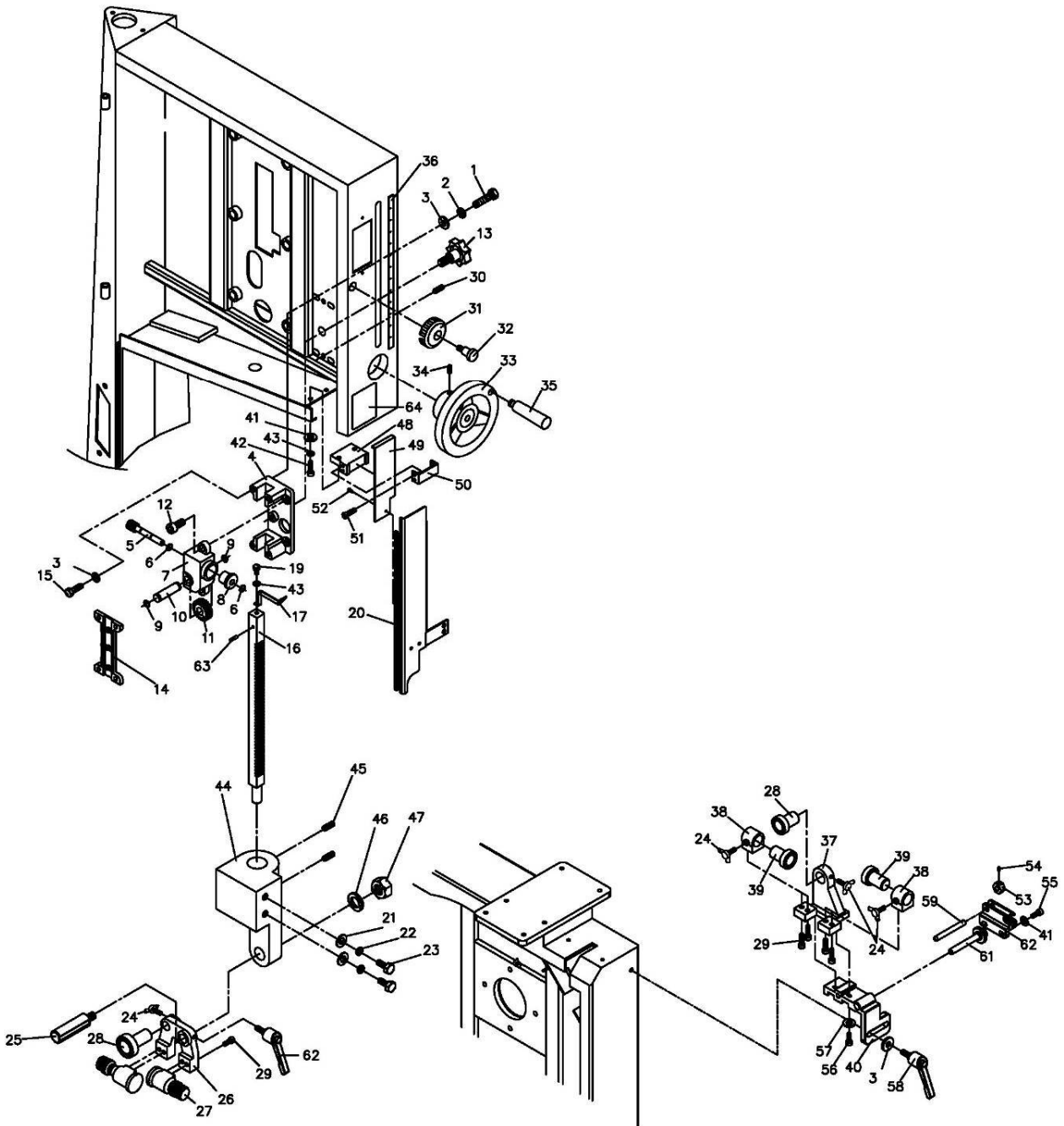


## Lower Wheel and Motor Assembly

Index No.	Part No.	Description	Size	Qty
1	JWBS20-201	Bearing Base		1
2	JWBS20-62	Adjusting Bolt		4
3	TS-0720091	Lock Washer	3/8	6
4	TS-0060111	Hex Cap Screw	3/8x2-1/2	4
5	BB-6206ZZ	Ball Bearing	6206	2
6	JWBS20QT-206	Spindle		1
7	JWBS20-49	Key	7x7x25	1
9	JWBS20QT-209E	V-Belt		1
10	JWBS20-532	Lower Wheel		1
11	JWBS20-21	Tire		1
12	TS-0680091	Flat Washer	3/4	1
13	JWBS20-22	Hex Nut	3/4-16UNF L.H	1
14	JWBS20-214	Hex Nut	3/4-16UNF R.H	1
15	JWBS20-215	Bearing Cover		1
16	TS-0720071	Lock Washer	1/4	3
17	JWBS20-217	Screw	1/4x3/8	3
18	JWBS20Q-218E	Motor	2HP, 1Ph, 230V	1
	JWBS20Q-218AE	Motor	3HP, 3Ph, 400V	1
	JWBS20-RCE	Running Capacitor (not shown)	30uF, 450V	1
	JWBS20-CCE	Capacitor Cover (not shown)		1
	JWBS20X-FAN	Fan (not shown)		1
	JWBS20Q-MFCE	Motor Fan Cover (not shown)		1
18-1	JWBS18Q-PE	Plate		1
18-2	2415-426BME	Brake Magnet		1
18-3	JWBS18DX-KE	Key		1
18-4	2415-426BE	Block		1
18-5	JWBS18DX-RE	Rectifier		1
19	JWBS20QT-219	Motor Bracket		1
20	TS-0081031	Hex Cap Screw	5/16-18x3/4	4
21	TS-0680031	Flat Washer	5/16	4
22	TS-0060051	Hex Cap Screw	3/8-16x1	1
23	TS-0720091	Lock Washer	3/8	2
24	TS-0680041	Flat Washer	3/8	2
25	JWBS20QT-225E	Motor Pulley		1
26	TS-0270031	Set Screw	5/16-18x3/8	2
27	JWBS20QT-227E	Lower Front Door		1
28	JWBS20-542	Door Stud		1
29	TS-0561011	Hex Nut	1/4-20	1
30	JWBS20-2	Lock Knob		1
31	TS-081F052	Pan Head Machine Screw	1/4-20x3/4	1
32	JWBS18-232E	Dust Chute		1
33	TS-0680031	Flat Washer	5/16	2
34	TS-0051051	Hex Cap Screw	5/16-18x1	2
35	JWBS18-235E	Cord Plate		1
36	TS-081C032	Pan Head Machine Screw	#10-24x1/2	2
37	54A-S39	Strain Relief Bushing	PG-11	2
38	TS-081C082	Pan Head Machine Screw	#10-24x1-1/2	2
39	TS-069204	Flat Washer	#10	4
40	JWBS18-240	Brush		1
41	TS-0720051	Lock Washer	#10	2
42	JWBS18DX-243E	Motor Cord (Motor to switch)	1Ph	1
	JWBS18DX-243AE	Motor Cord (Motor to switch)	3Ph	1
43	JWBS18DX-244E	Power Cord	1Ph	1
	JWBS18DX-244AE	Power Cord	3Ph	1
46	JWBS18-39A	Door Hinge Pin		2
58	JWBS20QT-258	Spindle Pulley		1

Index No.	Part No.	Description	Size	Qty
60	TS-081C032	Pan Head Machine Screw	#10-24x1/2	6
62	TS-0560071	Hex Nut	#10-24	2
65	JWBS18DXA-262	Grip		1
66	JWBS18DXA-263	Lock Handle		1
67	JWBS20QT-267	Key	7x7x40	1
68	JWBS18DX-254	Plastic Washer		1
70	TS-0720081	Lock Washer	5/16	2
71	TS-0561021	Hex Nut	5/16-18	2
72	JWBS18DX-249	Bracket		1
73	JWBS18DX-250	Shelf		1
74	JWBS20Q-274E	I.D Label (not shown)	1Ph	1
	JWBS20Q-274AE	I.D Label (not shown)	3Ph	1

# Blade Guide Assembly



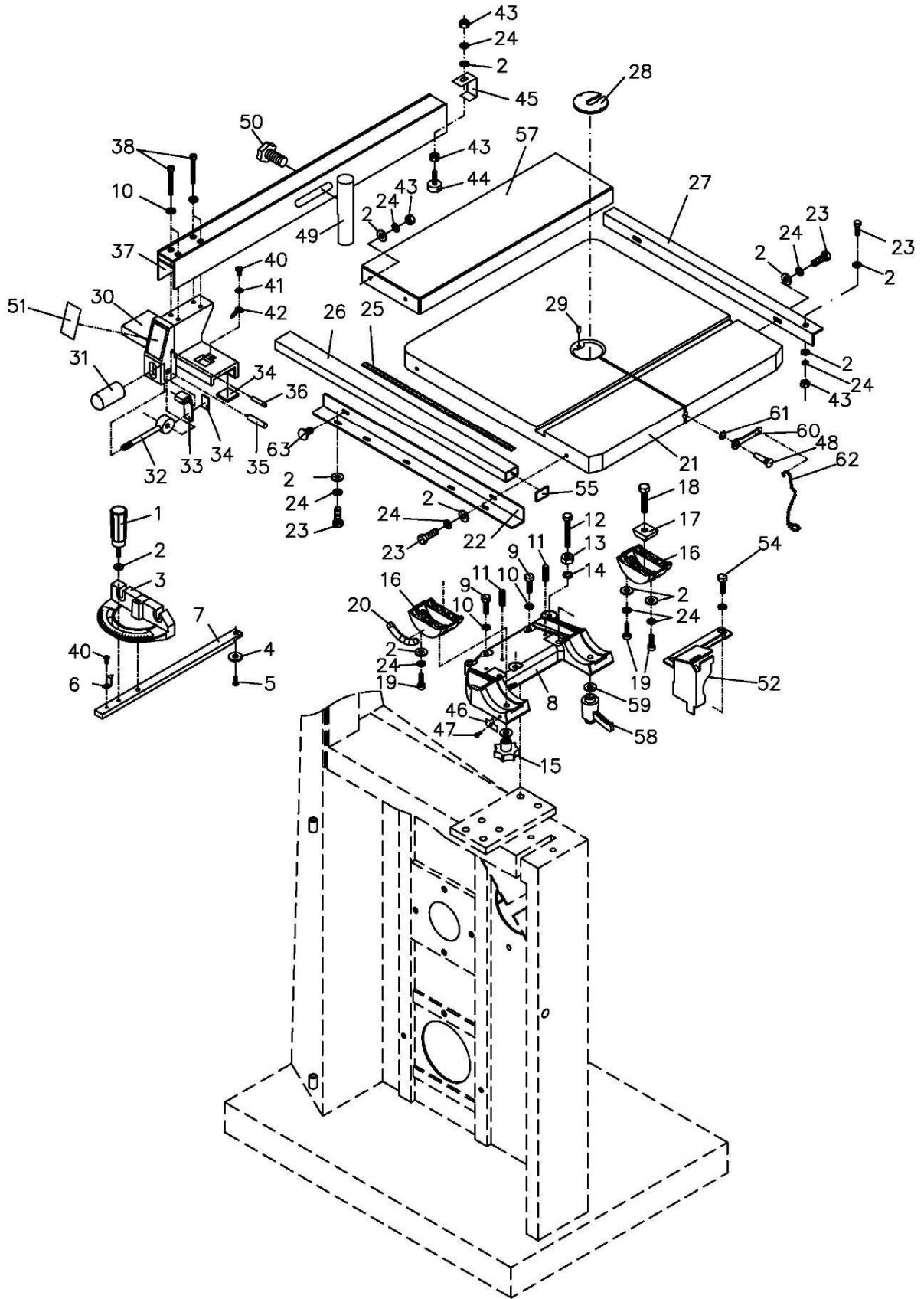


## Blade Guide Assembly

Index No.	Part No.	Description	Size	Qty
1	TS-0051051	Hex Cap Screw	5/16-18x1	4
2	TS-0720081	Lock Washer	5/16	4
3	TS-0680031	Flat Washer	5/16	8
4	JWBS20-304	Guide Bar Bracket		1
5	JWBS18-305	Worm		1
6	JWBS18-306	E-Ring	E-8	2
7	JWBS18-307	Gear Base		1
8	JWBS18-308	Bushing		1
9	JWBS18-309	C-Ring	S-12	2
10	JWBS18-310	Shaft		1
11	JWBS18-311	Gear		1
12	TS-0208071	Socket Head Cap Screw	5/16-18x1-1/4	2
13	JWBS20-313	Lock Knob	5/16	1
14	JWBS20-314	Plate		1
15	TS-0051011	Hex Cap Screw	5/16-18x1/2	4
16	JWBS20-316	Guide Bar		1
17	JWBS20QT-317	Pointer		1
19	TS-0050011	Hex Cap Screw	1/4-20x1/2	1
20	JWBS20-318E	Blade Guard		1
21	TS-0680021	Flat Washer	1/4	6
22	TS-0720071	Lock Washer	1/4	2
23	TS-0050021	Hex Cap Screw	1/4-20x5/8	2
24	JWBS20-324	Wing Bolt		4
25	JWBS20-325	Bracket Shaft		1
26	JWBS20-115	Upper Guide Bracket		1
27	JWBS20-114	Guide Wheel Assembly		2
28	JWBS20-113	Blade Support Shaft w/ Bearing		2
29	TS-0207021	Socket Head Cap Screw	1/4-20x1/2	9
30	TS-0267041	Set Screw	1/4-20x3/8	2
31	JWBS20-2	Lock Knob		1
32	TS-081F052	Pan Head Machine Screw	1/4-20x3/4	1
33	JWBS18-333	Hand Wheel		1
34	TS-0267041	Set Screw	1/4-20x3/8	1
35	JWBS20-103A	Handle		1
36	JWBS20-336E	Cutting Height Scale		1
37	JWBS18DX-337E	Bracket		1
38	JWBS18-338	Lower Guide Wheel Housing		2
39	JWBS18-339	Lower Guide Wheel Assembly		2
40	JWBS18DX-338	Base		1
41	TS-0680021	Flat Washer	1/4	4
42	TS-0050021	Hex Cap Screw	1/4-20x5/8	2
43	TS-0720071	Lock Washer	1/4	5
44	JWBS20Q-344E	Guide Bar Bracket		1
45	TS-0270031	Set Screw	5/16-18x3/8	2
46	TS-0720111	Lock Washer	1/2	1
47	TS-0 561051	Hex Nut	1/2-13	1
48	JWBS20Q-348E	Upper Guard Bracket		1
49	JWBS20-349	Upper Blade Guard		1
50	JWBS18-347E	Bracket Cover		1
51	JWBS18-345E	Philips Screw	#10-24x3/8	4
52	JWBS18-352E	Pin	3x12	1
53	JWBS18DX-363	Nut		1
54	TS-0267021	Set Screw	1/4-20x1/4	1
55	TS-0207041	Socket Head Cap Screw	1/4-20x3/4	2
56	TS-0206031	Socket Head Cap Screw	#10-24x5/8	2

Index No.	Part No.	Description	Size	Qty
57	TS-0680011	Flat Washer	#10	2
58	JWBS18DX-359	Locking Handle		1
59	JWBS18DX-360	Shaft		1
61	JWBS18DX-361	Adjusting Screw		1
62	JWBS18DX-362	Adjusting Bracket		1
63	JWBS20Q-363E	Pin	Ø5x10	1
64	JWBS18-348E	Blade Direction Label		1

# Table and Fence Assembly



## Table and Fence Assembly

Index No.	Part No.	Description	Size	Qty
1	JWBS18-401	Lock Knob		1
2	TS-0680021	Flat Washer	1/4	22
3	JWBS18-403	Miter Gauge Body		1
4	JWBS20-156	Guide Disc		1
5	JWBS18-405	Pan Head Screw	M6x8	1
6	JWBS18-406	Pointer		1
7	JWBS18-407	Guide Bar		1
8	JWBS18X-408	Trunnion Support Bracket		1
9	TS-0051071	Hex Cap Bolt	5/16-18 x 1-1/2	3
10	TS-0720081	Lock Washer	5/16	8
11	TS-0270061	Set Screw	5/16-18 x 5/8	2
12	TS-0060111	Hex Cap Bolt	3/8-16 x 2-1/2	1
13	TS-0561031	Hex Nut	3/8-16	1
14	TS-0720091	Lock Washer	3/8	1
15	JWBS18-415	Lock Knob		2
16	JWBS18-416	Trunnion		2
17	JWBS18-417	Trunnion Clamp Shoe		2
18	TS-1491081	Hex Cap Bolt	M10 x 50	2
19	TS-1503041	Socket Head Cap Screw	M6x12	6
20	JWBS18-420	Scale		1
21	JWBS20-421	Table		1
22	JWBS18-422E	Front Rail		1
23	TS-0050021	Hex Cap Bolt	1/4-20 x 5/8	10
24	TS-0720071	Lock Washer	1/4	21
25	JWBS18-425E	Scale		1
26	JWBS20-426	Guide Rail		1
27	JWBS18-427E	Rear Rail		1
28	JWBS20-144	Table Insert		1
	JWBS20-144E	Narrow Table Insert		1
29	JWBS20-145	Roll Pin	3x10	1
30	JWBS18-430	Fence Body		1
31	JWBS18-431	Knob		1
32	JWBS18-432	Lock Handle		1
33	JWBS18-433	Lock Plate		1
34	JWBS18-434	Pad		5
35	JWBS18-435	Pin		1
36	JWBS18-436	Pin		1
37	JWBS20-437EA	Fence		1
38	TS-0208041	Socket Head Cap Screw	5/16-18x3/4	4
40	TS-0810012	Screw	#10-24x1/4	2
41	TS-0733031	Star Washer	#10	1
42	JWBS18-442	Pointer		1
43	TS-0561011	Hex Nut	1/4-20	7
44	JWBS18-444	Sliding Pad		1
45	JWBS18-445	Rear Hook		1
46	JWBS18-446	Pointer		1
47	JWBS18-447	Screw	M5x8	1

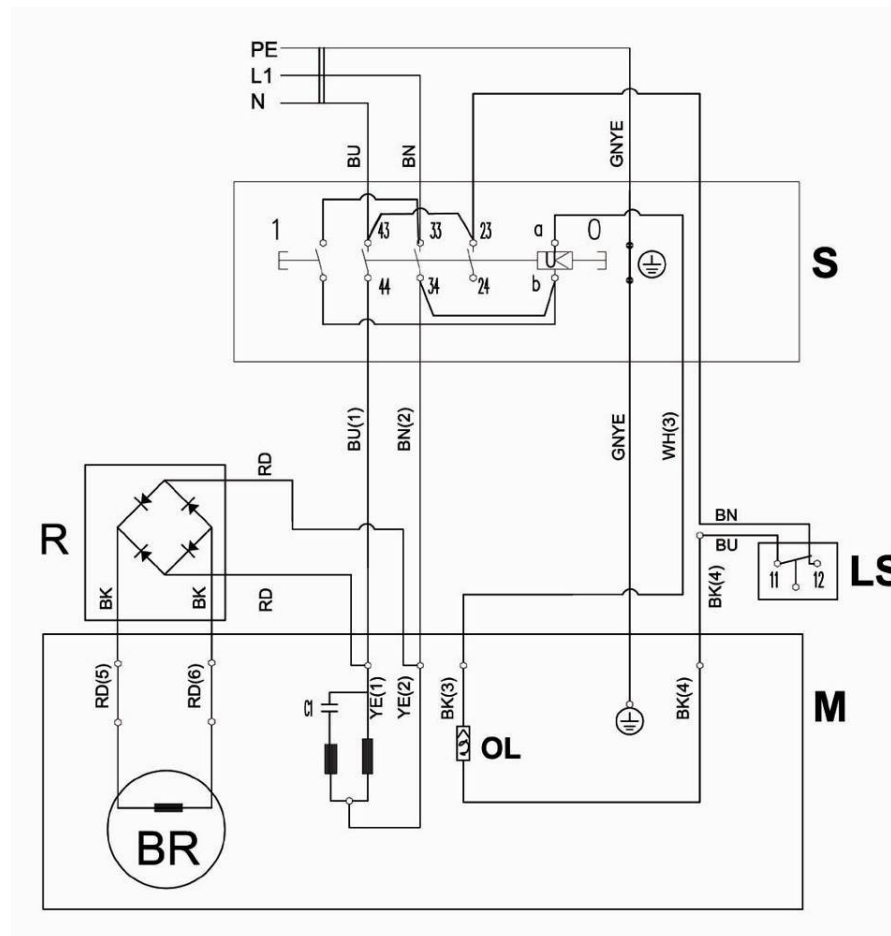
Index No.	Part No.	Description	Size	Qty
48	JWBS18DX-448	Table Pin		1
49	JWBS18-449E	Resaw Post		1
50	JWBS18-450	Lock Knob		1
51	JWBS18-451	JET Fence Label		1
52	JWBS18-452E	Lower Blade Guard		1
54	TS-0051091	Hex Cap Bolt	.5/16-18x2	3
55	2013-285	End Cover		2
56	JWBS18DX-462E	Sucker (not shown)		1
57	JWBS20-455	Extension Table		1
58	JWBS18DX-458E	Lock Handle		1
59	TS-0680061	Flat Washer	1/2	2
60	40-0260	Wrench		1
61	JWBS18DX-459	C-Ring	S-10	2
62	JWBS18DX-460	Link Chain		1
63	TS-0151081	Carriage Bolt	1/4-20x5/8	4
	JWBS18-MGCP	Miter Gauge Assembly		
	JWBS20-FCPE	Fence Assembly Complete		
	JWBS20Q-APE	Accessory Package		

# JWBS-20Q 708752BM

	colour of strands	Litzenfarben	couleur des cordons
BK	black	schwarz	noir
WH	white	weiß	blanc
BU	blue	blau	bleu
YE	yellow	gelb	jaune
RD	red	rot	rouge
BN	brown	braun	brun
GY	grey	grau	gris
GNYE	green-yellow	grün-gelb	vert-jaune
OG	orange	orange	orange
VT	violet	violett	violet

	meaning of symbol	Bedeutung der Zeichen	interprétation
M	motor	Motor	moteur
S	switch	Schalter	interrupteur
C	condenser	Kondensator	condensateur
R	rectifier	Gleichrichter	rectifier
BR	motor break	Motorbremse	frein de moteur
RS	reversing switch	Drehrichtungsschalter	commu. droite/gauche
CS	centrifugal switch	Fliehkraftschalter	déclencheur centrifuge
OL	overload cut-off	Überlastschuttschalter	déclencheur surcharge
LS	limit switch	Positionsendschalter	micro

230/50/1



**JWBS-20Q  
708752BT**

**400/50/3**

	colour of strands	Litzenfarben	couleur des cordons
BK	black	schwarz	noir
WH	white	weiß	blanc
BU	blue	blau	bleu
YE	yellow	gelb	jaune
RD	red	rot	rouge
BN	brown	braun	brun
GY	grey	grau	gris
GNYE	green-yellow	grün-gelb	vert-jaune
OG	orange	orange	orange
VT	violet	violett	violet

	meaning of symbol	Bedeutung der Zeichen	interprétation
M	motor	Motor	moteur
S	switch	Schalter	interrupteur
C	condenser	Kondensator	condensateur
R	rectifier	Gleichrichter	rectifier
BR	motor break	Motorbremse	frein de moteur
RS	reversing switch	Drehrichtungsschalter	commu. droite/gauche
CS	centrifugal switch	Fliehkraftschalter	déclencheur centrifuge
OL	overload cut-off	Überlastschuttschalter	déclencheur surcharge
LS	limit swith	Positionsendschalter	micro

