

J E T

JWP-2510 THICKNESSER

**1791303T
400/50/3**

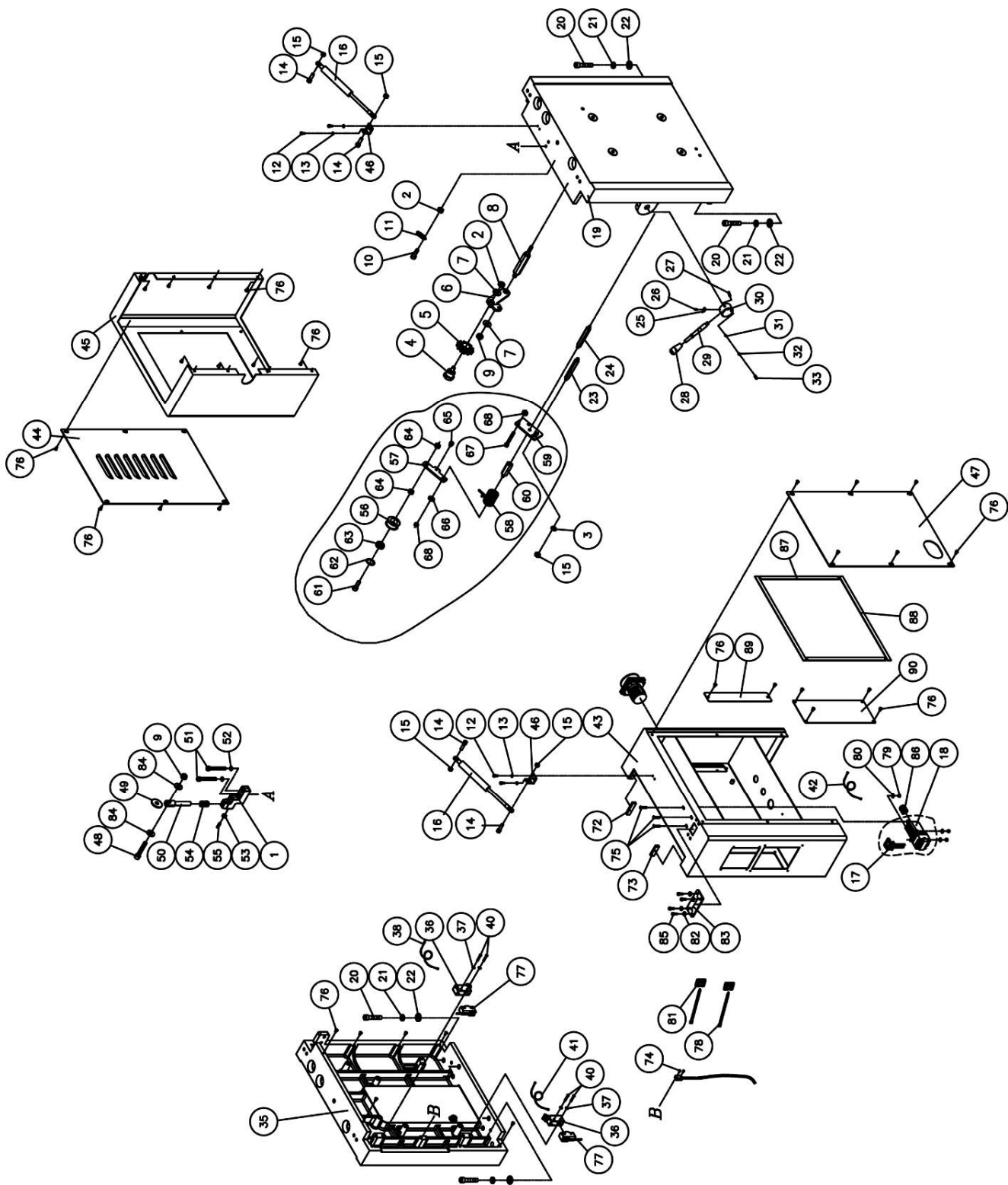
PARTS LIST

Walter Meier (Fertigung) AG
Bahnstrasse 24
8603 Schwerzenbach
Switzerland
Phone +41 44 806 47 48
Fax +41 44 806 47 58
jetinfo.eu@waltermeier.com
www.jettools.com



P-1791303T 02/09

JWP-2510 Column Assembly



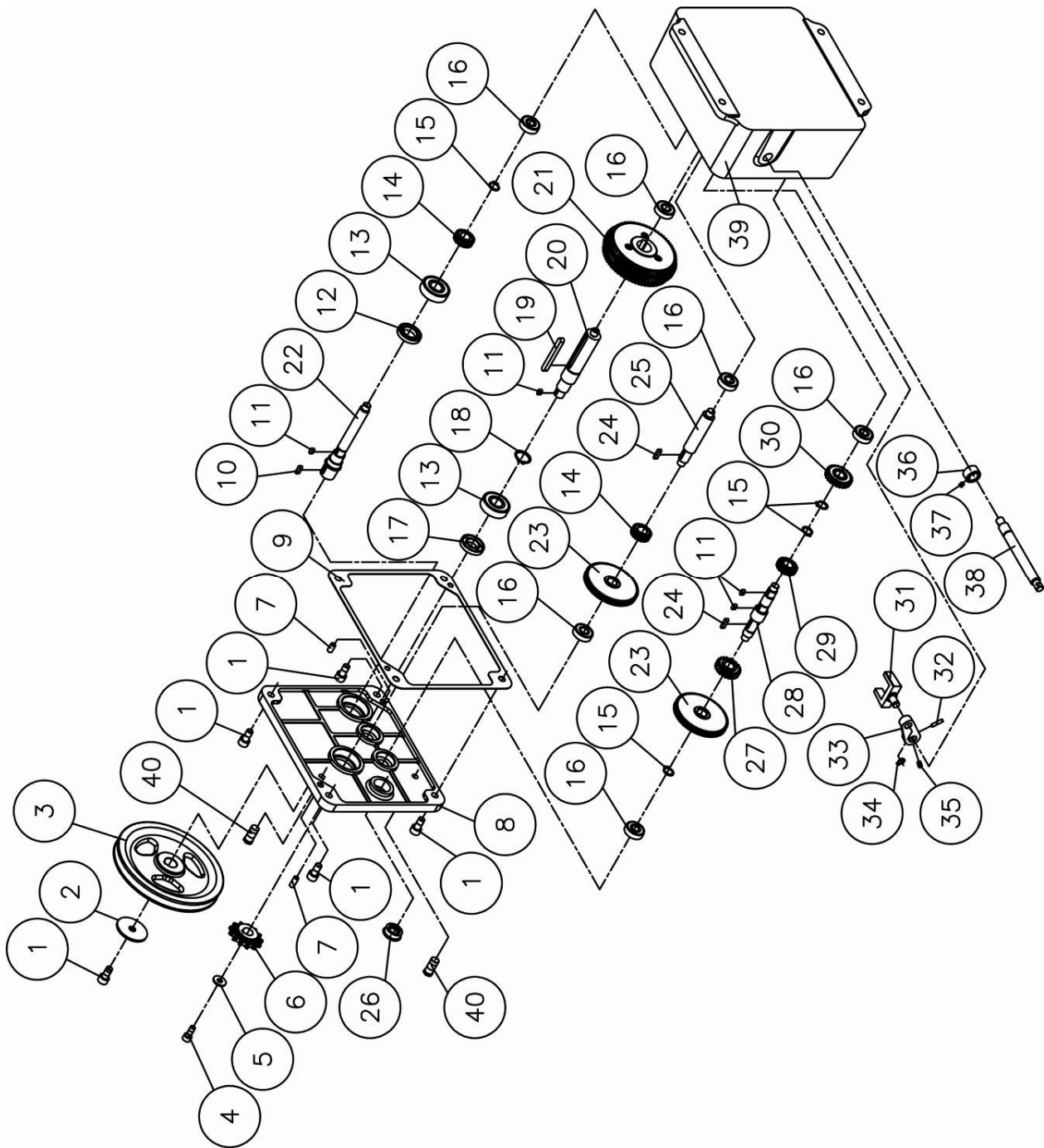
JWP-2510 Column Assembly

| Index No. | Part No. | Description | Size | Qty |
|-----------|--------------|-----------------------------------|--------|-----|
| 1 | WP2510-401 | Idle Support Base | | 1 |
| 2 | TS-1540071 | Hex Nut | M10 | 2 |
| 3 | TS-1550061 | Flat Washer | M8 | 1 |
| 4 | 6012082 | Shaft | | 1 |
| 5 | 6012286 | Sprocket | | 1 |
| 6 | 6012287 | Sprocket Bracket | | 1 |
| 7 | TS-1550071 | Flat Washer | M10 | 2 |
| 8 | WP2510-408 | Shaft | | 1 |
| 9 | TS-1541041 | Nylon Insert Lock Nut | M10 | 2 |
| 10 | TS-1505071 | Socket Head Cap Screw | M10x45 | 1 |
| 11 | WP2510-411 | Spring | | 1 |
| 12 | TS-1502031 | Socket Head Cap Screw | M5x12 | 4 |
| 13 | TS-1551031 | Lock Washer | M5 | 4 |
| 14 | WP2510-414 | Shoulder Screw | | 4 |
| 15 | TS-1541031 | Nylon Insert Lock Nut | M8 | 5 |
| 16 | WP2510-416 | Cylinder | | 2 |
| | WP2510-LSA | Limit Switch Assembly (17, 18) LS | | 1 |
| 17 | WP2510-417AE | Safety Key | | 1 |
| 18 | WP2510-418AE | Limit Switch | | 1 |
| 19 | WP2510-419 | Left Column | | 1 |
| 20 | TS-1506051 | Socket Head Cap Screw | M12x40 | 12 |
| 21 | TS-1551081 | Lock Washer | M12 | 12 |
| 22 | TS-2360121 | Flat Washer | M12 | 12 |
| 23 | WP2510-423 | Shaft | | 1 |
| 24 | WP2510-424 | Shaft | | 1 |
| 25 | WP2510-425 | Pointer | | 1 |
| 26 | TS-2171012 | Pan Head Screw | M4x6 | 1 |
| 27 | WP2510-427 | Pin | | 1 |
| 28 | 6012214 | Handle Knob | | 1 |
| 29 | 6012213 | Handle Shaft | | 1 |
| 30 | WP2510-430 | Shift Hub | | 1 |
| 31 | WP2510-431 | Steel Ball | | 1 |
| 32 | WP2510-432 | Spring | | 1 |
| 33 | TS-1524031 | Set Screw | M8x12 | 1 |
| 35 | WP2510-435 | Right Column | | 1 |
| 36 | WP2510-436 | Plastic Cover | | 2 |
| 37 | TS-1550021 | Flat Washer | M4 | 4 |
| 38 | WP2510-438AE | Limit Switch Cord | | 1 |
| 40 | TS-2284302 | Pan Head Screw | M4x30 | 4 |
| 41 | WP2510-441AE | Limit Switch Cord | | 1 |
| 42 | WP2510-442AE | Limit Switch Cord | | 1 |
| 43 | WP2510-443EA | Right Cover | | 1 |
| 44 | WP2510-444 | Left Panel | | 1 |
| 45 | WP2510-445 | Left Cover | | 1 |
| 46 | WP2510-446 | Cylinder Bracket | | 2 |
| 47 | WP2510-447 | Right Panel | | 1 |
| 48 | TS-1505061 | Socket Head Cap Screw | M10x40 | 1 |
| 49 | WP2510-449 | Washer | | 1 |
| 50 | WP2510-450 | Shaft | | 1 |
| 51 | TS-1504081 | Socket Head Cap Screw | M8x40 | 2 |
| 52 | TS-1551061 | Lock Washer | M8 | 2 |
| 53 | TS-1540041 | Hex Nut | M6 | 1 |
| 54 | WP2510-454 | Spring | | 1 |
| 55 | TS-1523061 | Set Screw | M6x20 | 1 |
| | WP2510-IA | Idler Assembly (Items 56 thru 68) | | 1 |

JWP-2510 Column Assembly

| Index No. | Part No. | Description | Size | Qty |
|-----------|--------------|--------------------------|--------|-----|
| 56 | WP2510-456 | Idler | | 1 |
| 57 | WP2510-457 | Idler Bracket | | 1 |
| 58 | WP2510-458 | Spring | | 1 |
| 59 | WP2510-459 | Plate | | 1 |
| 60 | WP2510-460 | Bolt | | 1 |
| 61 | TS-1505041 | Socket Head Cap Screw | M10x30 | 1 |
| 62 | WP2510-462 | C-Ring | | 1 |
| 63 | BB-6200ZZ | Ball Bearing | 6200ZZ | 1 |
| 64 | TS-1540071 | Hex Nut | M10 | 2 |
| 65 | WP2510-465 | Socket Head Cap Screw | M8x8 | 1 |
| 66 | TS-1550061 | Flat Washer | M8 | 1 |
| 67 | TS-1504121 | Socket Head Cap Screw | M8x60 | 1 |
| 68 | TS-1540061 | Hex Nut | M8 | 1 |
| 72 | WP2510-472E | Long Sponge | | 1 |
| 73 | WP2510-473E | Short Sponge | | 1 |
| 74 | WP2510-474 | Screw | M3x15 | 2 |
| 75 | WP2510-475E | Screw | M5x20 | 3 |
| 76 | TS-2246106 | Socket Head Button Screw | | 28 |
| 77 | WP2510-477AE | Limit Switch | | 2 |
| 78 | WP2510-477E | Cord Holder | | 2 |
| 79 | TS-1540031 | Hex Nut | M5 | 3 |
| 80 | TS-1550031 | Flat Washer | M5 | 3 |
| 81 | WP2510-476E | Cord Holder Base | | 2 |
| 82 | TS-1550041 | Flat Washer | M6 | 4 |
| 83 | JWP201-484 | Gasket | | 1 |
| 84 | TS-1540071 | Flat Washer | M10 | 2 |
| 85 | TS-1503021 | Socket Head Cap Screw | M6x10 | 4 |
| 86 | JWP201-488AE | Strain Relief | | 1 |
| 87 | JWP2510-487 | Sponge | | 2 |
| 88 | JWP2510-488 | Sponge | | 2 |
| 89 | JWP2510-489 | Cover | | 1 |
| 90 | JWP2510-490 | Cover | | 1 |

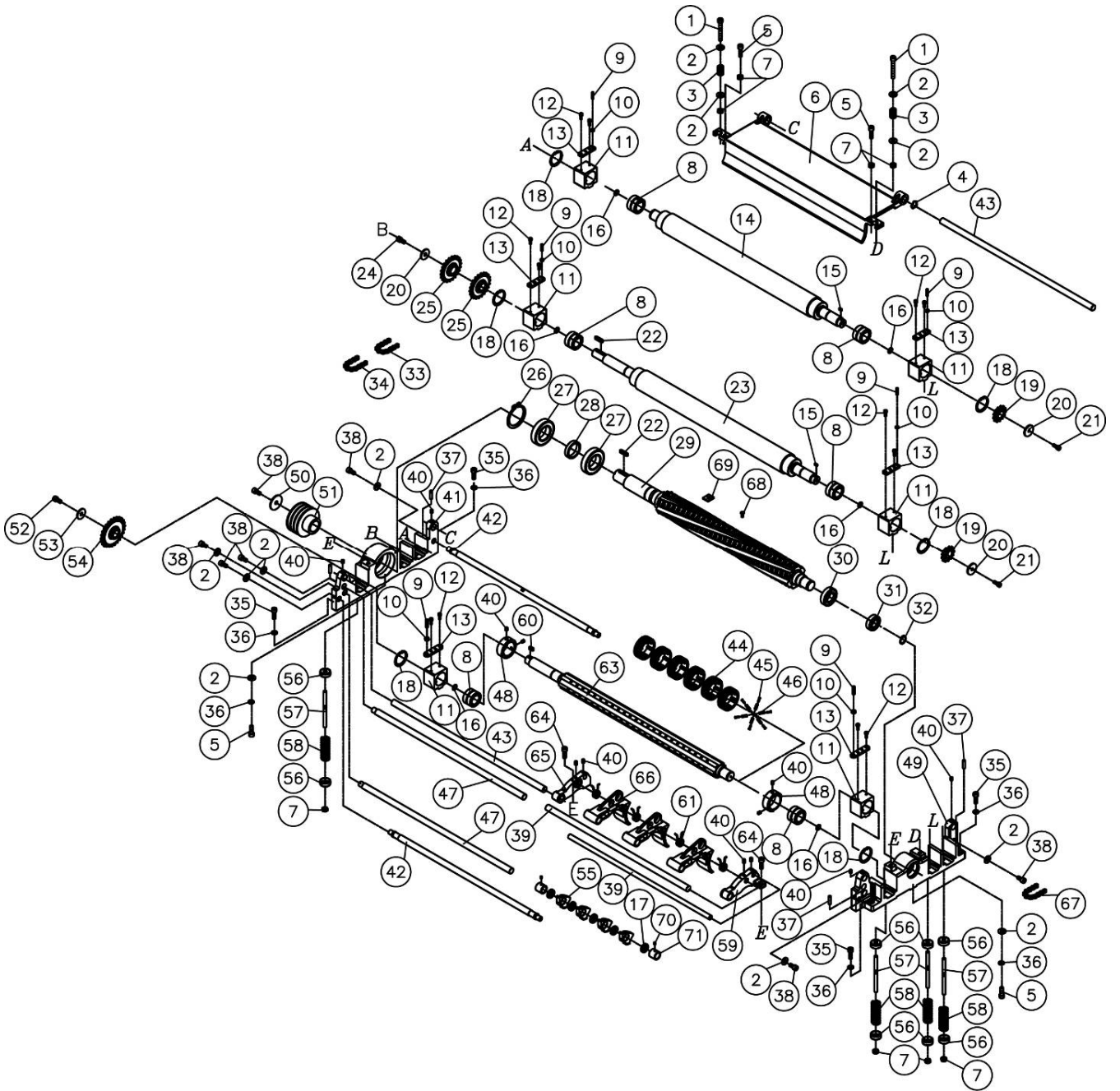
JWP-2510 Gearbox Assembly



JWP-2510 Gearbox Assembly

| Index No. | Part No. | Description | Size | Qty |
|-----------|------------|--|--------|-----|
| | WP2510-100 | Gearbox Assembly (index nos. 1 through 40) | | 1 |
| 1 | TS-1505021 | Socket Head Cap Screw | M10x20 | 5 |
| 2 | 6012047 | Washer | | 1 |
| 3 | 6012046 | Pulley | | 1 |
| 4 | TS-1504041 | Socket Head Cap Screw | M8x20 | 1 |
| 5 | TS-1550061 | Flat Washer | M8 | 1 |
| 6 | 6012050 | Sprocket | | 1 |
| 7 | WP2510-107 | Pin | | 2 |
| 8 | WP2510-108 | Gearbox Cover | | 1 |
| 9 | WP2510-109 | Gasket | | 1 |
| 10 | WP2510-110 | Key | 5x5x16 | 1 |
| 11 | WP2510-111 | Key | 5x5x10 | 4 |
| 12 | WP2510-112 | Oil Seal | | 1 |
| 13 | BB-6204VV | Ball Bearing | 6204VV | 2 |
| 14 | 6012037 | Gear | 20T | 2 |
| 15 | WP2510-115 | S-Ring | | 4 |
| 16 | BB-6201VV | Ball Bearing | 6201VV | 6 |
| 17 | WP2510-117 | Oil Seal | | 1 |
| 18 | WP2510-118 | S-Ring | | 1 |
| 19 | WP2510-119 | Key | 8x7x72 | 1 |
| 20 | WP2510-120 | Shaft | | 1 |
| 21 | WP2510-121 | Gear | | 1 |
| 22 | WP2510-122 | Shaft | | 1 |
| 23 | 6012041 | Gear | 60T | 2 |
| 24 | WP2510-124 | Key | 5x5x20 | 2 |
| 25 | WP2510-125 | Shaft | | 1 |
| 26 | WP2510-126 | Oil Level Sight Glass | | 1 |
| 27 | WP2510-127 | Gear | | 1 |
| 28 | WP2510-128 | Shaft | | 1 |
| 29 | WP2510-129 | Gear | | 1 |
| 30 | WP2510-130 | Gear | | 1 |
| 31 | WP2510-131 | Shift Fork | | 1 |
| 32 | WP2510-132 | Pin | | 1 |
| 33 | 6012061 | Lever | | 1 |
| 34 | WP2510-134 | S-Ring | | 1 |
| 35 | TS-1523021 | Set Screw | M6x8 | 1 |
| 36 | WP2510-136 | Bushing | | 1 |
| 37 | TS-1523011 | Set Screw | M6x6 | 1 |
| 38 | WP2510-138 | Shift Shaft | | 1 |
| 39 | WP2510-139 | Gearbox | | 1 |
| 40 | WP2510-140 | Oil Plug | | 2 |

JWP-2510 Cutterhead Assembly



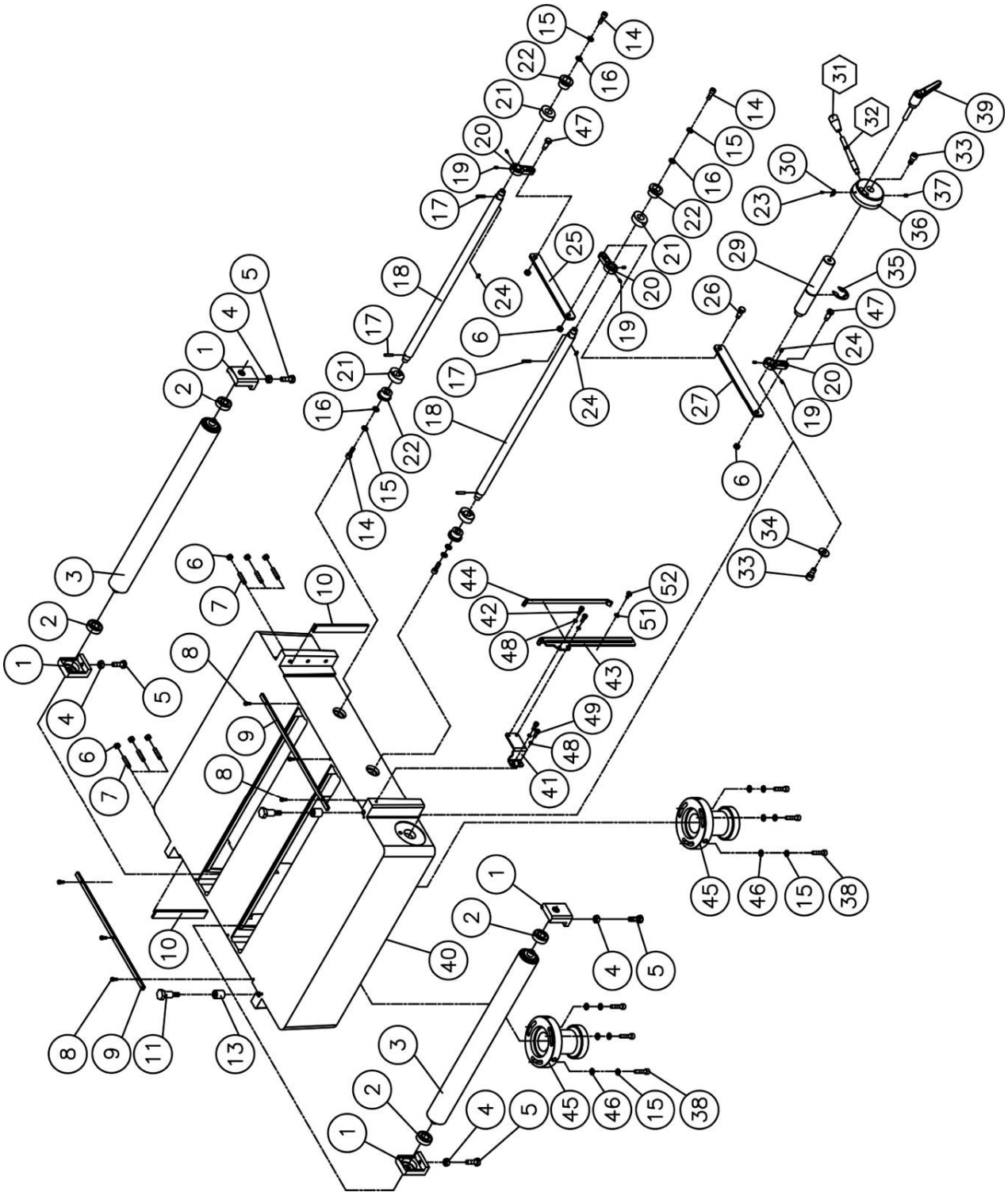
JWP-2510 Cutterhead Assembly

| Index No. | Part No. | Description | Size | Qty |
|-----------|-------------|--|-----------|-----|
| 1 | WP2510-201 | Socket Head Cap Screw | M10x75 | 2 |
| 2 | TS-1550071 | Flat Washer | M10 | 12 |
| 3 | 6012132 | Spring | | 2 |
| 4 | WP2510-204 | Wave Washer | | 1 |
| 5 | TS-1505061 | Socket Head Cap Screw | M10x40 | 4 |
| 6 | WP2510-206 | Pressure Bar | | 1 |
| 7 | TS-1540071 | Hex Nut | M10 | 10 |
| 8 | WP2510-208 | Needle Bearing | NA-6906 | 6 |
| 9 | WP2510-209 | Set Screw | M6x30 | 6 |
| 10 | TS-1540041 | Hex Nut | M6 | 6 |
| 11 | 6012141 | Bearing Housing | | 6 |
| 12 | TS-1503041 | Socket Head Cap Screw | M6x16 | 12 |
| 13 | WP2510-213 | Plate | | 6 |
| 14 | WP2510-214 | Rear Outfeed Roller | | 1 |
| 15 | WP2510-215 | Key | 5x5x12 | 2 |
| 16 | WP2510-216 | C-Ring | | 6 |
| 17 | 6012177 | Spacer | | 35 |
| 18 | WP2510-218 | C-Ring | | 6 |
| 19 | WP2510-219 | Sprocket | | 2 |
| 20 | TS-1550061 | Flat Washer | M8 | 3 |
| 21 | TS-1504041 | Socket Head Cap Screw | M8x20 | 2 |
| 22 | WP2510-222 | Key | 8x7x35 | 2 |
| 23 | WP2510-223 | Front Outfeed Roller | | 1 |
| 24 | WP2510-224 | Socket Head Cap Screw (Left Thread) | M8x20 | 1 |
| 25 | WP2510-225 | Sprocket | 22T | 2 |
| 26 | WP2510-226 | S-Ring | | 1 |
| 27 | WP2510-227 | Ball Bearing | 6210VV | 2 |
| 28 | WP2510-228 | Bushing | | 1 |
| | WP2510-HCAE | Helical Cutterhead Assembly (includes #29, 68, 69) | | 1 |
| 29 | WP2510-829E | Helical Cutterhead | | 1 |
| 30 | BB-6008VV | Ball Bearing | 6008VV | 1 |
| 31 | BB-6007VV | Ball Bearing | 6007VV | 1 |
| 32 | WP2510-232A | S-Ring | | 1 |
| 33 | WP2510-233 | Chain | #40 x 58P | 1 |
| 34 | WP2510-234 | Chain | #40 x 74P | 1 |
| 35 | TS-1505081 | Socket Head Cap Screw | M10x50 | 4 |
| 36 | TS-1551071 | Lock Washer | M10 | 6 |
| 37 | WP2510-237 | Pin | | 4 |
| 38 | TS-1505021 | Socket Head Cap Screw | M10x20 | 7 |
| 39 | WP2510-239 | Spring Support Shaft | | 2 |
| 40 | TS-1524021 | Set Screw | M8x10 | 12 |
| 41 | WP2510-241 | Left Cutterhead Base | | 1 |
| 42 | WP2510-242 | Cutterhead Base Support Shaft | | 2 |
| 43 | WP2510-243 | Chipbreaker Support Shaft | | 1 |
| 44 | 6012167 | Infeed Roller | | 24 |
| 45 | 6012168 | Shaft | | 144 |
| 46 | 6012169 | Spring | | 144 |
| 47 | WP2510-247 | Anti-Kickback Finger Support Shaft | | 2 |
| 48 | 6012164 | Infeed Roller Spacer | | 2 |
| 49 | WP2510-249A | Right Cutterhead Base | | 1 |
| 50 | 6012116 | Washer | | 1 |
| 51 | WP2510-251 | Cutterhead Pulley | | 1 |
| 52 | WP2510-252 | Socket Head Cap Screw (Left Thread) | M10x20 | 1 |
| 53 | TS-1550071 | Flat Washer | M10 | 1 |

JWP-2510 Cutterhead Assembly

| Index No. | Part No. | Description | Size | Qty |
|-----------|--------------|------------------------------------|---------------|-----|
| 54 | WP2510-254 | Sprocket | 26T | 1 |
| 55 | 6012178E | Anti-Kickback Finger | | 34 |
| 56 | 6012161 | Washer | | 12 |
| 57 | 6012163 | Shaft | | 6 |
| 58 | 6012162 | Spring | | 6 |
| 59 | WP2510-259 | Right Bracket | | 1 |
| 60 | WP2510-260 | Key | 8x7x16 | 1 |
| 61 | 6012175 | Spring | | 11 |
| 63 | WP2510-263 | Infeed Roller Shaft | | 1 |
| 64 | TS-1505041 | Socket Head Cap Screw | M10x30 | 2 |
| 65 | WP2510-265 | Left Bracket | | 1 |
| 66 | 6012174 | Chipbreaker | | 11 |
| 67 | WP2510-267 | Chain | #40 x 24P | 1 |
| 68 | JWP208HH-111 | Knife Insert Screw | #10-32 x 1/2" | 174 |
| 69 | 1791212 | Knife Insert (sold as set of 10) | | 174 |
| 70 | JJ6HH-113 | Star Point Screwdriver (not shown) | | 2 |
| 71 | WP2510-271 | Set Screw | M5x5 | 2 |
| 72 | WP2510-272 | Bushing | | 2 |

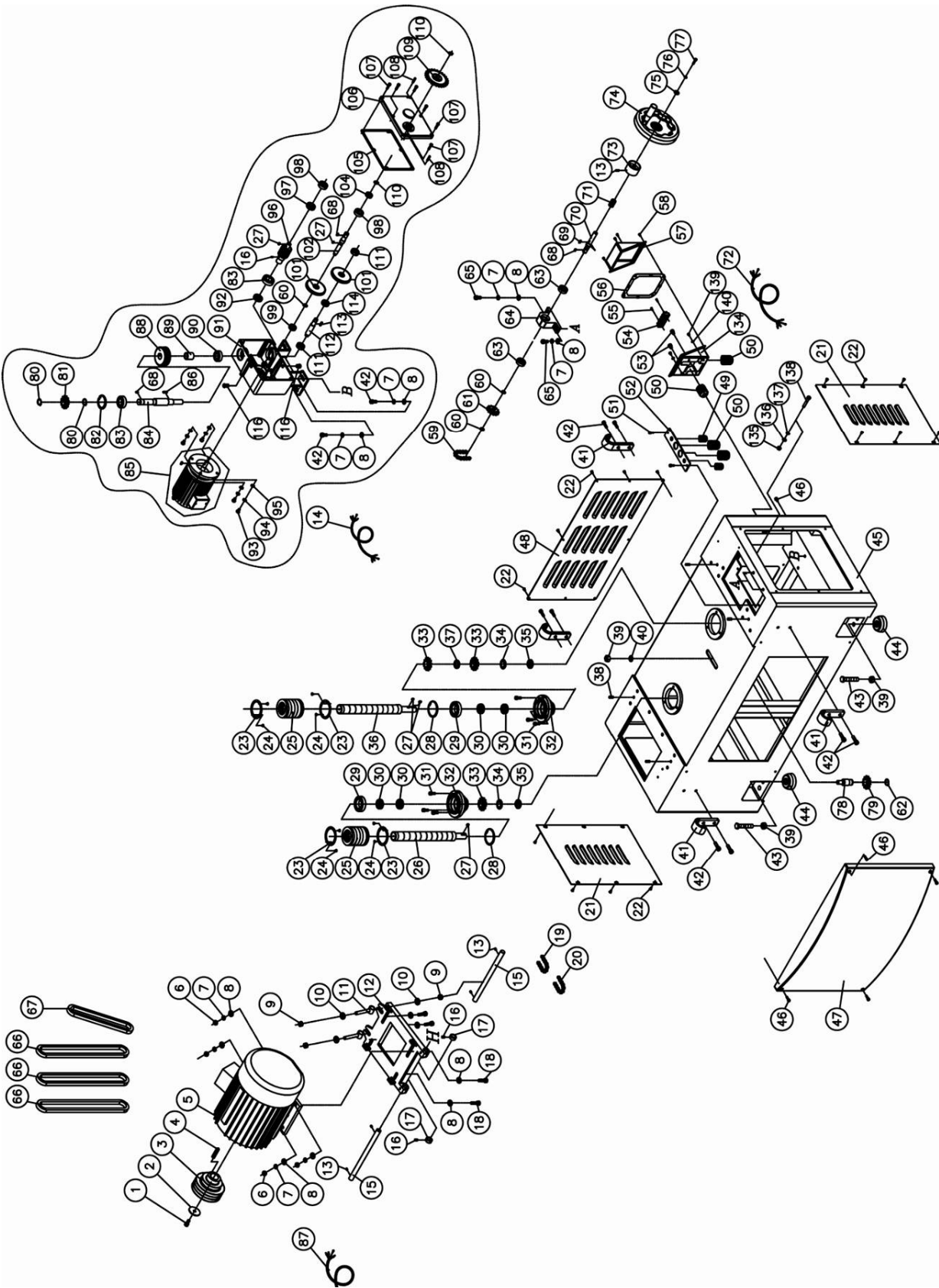
JWP-2510 Table Assembly



JWP-2510 Table Assembly

| Index No. | Part No. | Description | Size | Qty |
|-----------|------------|-----------------------|--------|-----|
| 1 | WP2510-501 | Roller Bracket | | 4 |
| 2 | BB-6203VV | Ball Bearing | 6203VV | 4 |
| 3 | WP2510-503 | Roller | | 2 |
| 4 | TS-1540071 | Hex Nut | M10 | 4 |
| 5 | TS-1491041 | Hex Cap Screw | M10x30 | 4 |
| 6 | TS-1540061 | Hex Nut | M8 | 9 |
| 7 | WP2510-507 | Set Screw | M8x40 | 6 |
| 8 | TS-1502091 | Socket Head Cap Screw | M5x16 | 6 |
| 9 | WP2510-509 | Guide | | 2 |
| 10 | 6012241 | Plate | | 2 |
| 11 | WP2510-511 | Shoulder Screw | | 2 |
| 13 | 6012239 | Sleeve | | 2 |
| 14 | TS-1504051 | Socket Head Cap Screw | M8x25 | 4 |
| 15 | TS-1551061 | Lock Washer | M8 | 10 |
| 16 | TS-1550061 | Flat Washer | M8 | 4 |
| 17 | WP2510-517 | Pin | | 4 |
| 18 | WP2510-518 | Transfer Roller | | 2 |
| 19 | TS-1522021 | Set Screw | M5x8 | 6 |
| 20 | 6012248 | Linking Plate | | 3 |
| 21 | 6012261 | Eccentric Cam | | 4 |
| 22 | 6012260 | Shaft | | 4 |
| 23 | TS-2171012 | Pan Head Screw | M4x6 | 1 |
| 24 | WP2510-111 | Key | 5x5x10 | 3 |
| 25 | WP2510-525 | Rear Linking Plate | | 1 |
| 26 | 6012258 | Shoulder Screw | | 1 |
| 27 | WP2510-527 | Front Linking Plate | | 1 |
| 29 | 6012249 | Shaft | | 1 |
| 30 | WP2510-530 | Pointer | | 1 |
| 31 | 6012214 | Handle Knob | | 1 |
| 32 | 6012213 | Handle Shaft | | 1 |
| 33 | TS-1505021 | Socket Head Cap Screw | M10x20 | 2 |
| 34 | TS-1550071 | Flat Washer | M10 | 1 |
| 35 | WP2510-535 | E-Clip | | 1 |
| 36 | 6012252 | Hub | | 1 |
| 37 | TS-1523021 | Set Screw | M6x8 | 1 |
| 38 | TS-1504081 | Socket Head Cap Screw | M8x40 | 6 |
| 39 | 6012253 | Locking Handle | | 1 |
| 40 | WP2510-540 | Table | | 1 |
| 41 | WP2510-541 | Pointer | | 1 |
| 42 | TS-1502021 | Socket Head Cap Screw | M5x10 | 2 |
| 43 | WP2510-543 | Slide Bracket | | 1 |
| 44 | WP2510-544 | Magnetic Bar | | 1 |
| 45 | 6012244 | Table Adjusting Hub | | 2 |
| 46 | TS-1550061 | Flat Washer | M8 | 6 |
| 47 | 6012247 | Shoulder Screw | | 2 |
| 48 | TS-2361051 | Lock Washer | M5 | 4 |
| 49 | TS-1502021 | Socket Head Cap Screw | M5x10 | 2 |
| 51 | WP2510-551 | Wave Washer | M5 | 1 |
| 52 | WP2510-552 | Shoulder Screw | | 1 |

JWP-2510 Base Assembly



JWP-2510 Base Assembly

| Index No. | Part No. | Description | Size | Qty |
|-----------|--------------|--------------------------|-----------------|-----|
| 1 | TS-1504031 | Socket Head Cap Screw | M8x16 | 1 |
| 2 | TS-1550061 | Flat Washer | M8 | 1 |
| 3 | WP2510-603E | Motor Pulley | | 1 |
| 4 | WP2510-604 | Key | 10x8x56 | 1 |
| 5 | WP2510-605AE | Main Motor, M1 | 15HP, 400V, 3Ph | 1 |
| 6 | TS-1540071 | Hex Nut | M10 | 4 |
| 7 | TS-2361101 | Lock Washer | M10 | 10 |
| 8 | TS-1550071 | Flat Washer | M10 | 14 |
| 9 | TS-1540081 | Hex Nut | M12 | 4 |
| 10 | TS-2360121 | Flat Washer | M12 | 4 |
| 11 | 6012123 | Adjusting Bolt | | 2 |
| 12 | WP2510-612 | Motor Plate | | 1 |
| 13 | TS-1523051 | Set Screw | M6x16 | 5 |
| 14 | WP2510-614AE | Hoist Motor Cord | | 1 |
| 15 | 6012126 | Shaft | | 2 |
| 16 | TS-1524021 | Set Screw | M8x10 | 3 |
| 17 | 6012125 | Spacer | | 2 |
| 18 | TS-1491081 | Hex Cap Screw | M10x50 | 4 |
| 19 | WP2510-619 | Chain | #40 x 54P | 1 |
| 20 | WP2510-620 | Chain | #40 x 84P | 1 |
| 21 | WP2510-621E | Side Cover | | 2 |
| 22 | TS-2246102 | Button Head Socket Screw | M6x10 | 20 |
| 23 | 6012071 | Bushing | | 4 |
| 24 | 6012070 | Washer Head Screw | M4x8 | 8 |
| 25 | 6012068 | Rubber Boot | | 2 |
| 26 | 6012069 | Driven Lead Screw | | 1 |
| 27 | WP2510-111 | Key | 5x5x10 | 5 |
| 28 | WP2510-628 | C-Ring | | 2 |
| 29 | BB-6008VV | Ball Bearing | 6008VV | 2 |
| 30 | BB-51105 | Thrust Bearing | 51105 | 4 |
| 31 | TS-1504041 | Socket Head Cap Screw | M8x20 | 6 |
| 32 | 6012075 | Bracket | | 2 |
| 33 | WP2510-633 | Sprocket | | 3 |
| 34 | WP2510-634 | Star Washer | M25 | 2 |
| 35 | WP2510-635 | Special Nut | | 2 |
| 36 | WP2510-636 | Drive Lead Screw | | 1 |
| 37 | WP2510-637 | Washer | | 1 |
| 38 | WP2510-638 | Pin | | 4 |
| 39 | TS-154010 | Hex Nut | M16 | 5 |
| 40 | TS-155010 | Flat Washer | M16 | 1 |
| 41 | WP2510-641 | Hanger | | 4 |
| 42 | TS-1505041 | Socket Head Cap Screw | M10x30 | 12 |
| 43 | WP2510-643 | Leveling Screw | M16x55 | 4 |
| 44 | 6012095 | Pad | | 4 |
| 45 | WP2510-645E | Base | | 1 |
| 46 | TS-1503021 | Socket Head Cap Screw | M6x10 | 5 |
| 47 | WP2510-647E | Front Cover | | 1 |
| 48 | WP2510-648E | Rear Cover | | 1 |
| 49 | WP2510-649AE | Strain Relief | | 2 |
| 50 | WP2510-650AE | Strain Relief | | 4 |
| 51 | TS-1503041 | Socket Head Cap Screw | M6x16 | 2 |
| 52 | WP2510-652 | Plate | | 1 |
| 53 | TS-1504011 | Socket Head Cap Screw | M8x10 | 2 |
| 54 | WP2510-654AE | Terminal Plate | | 1 |

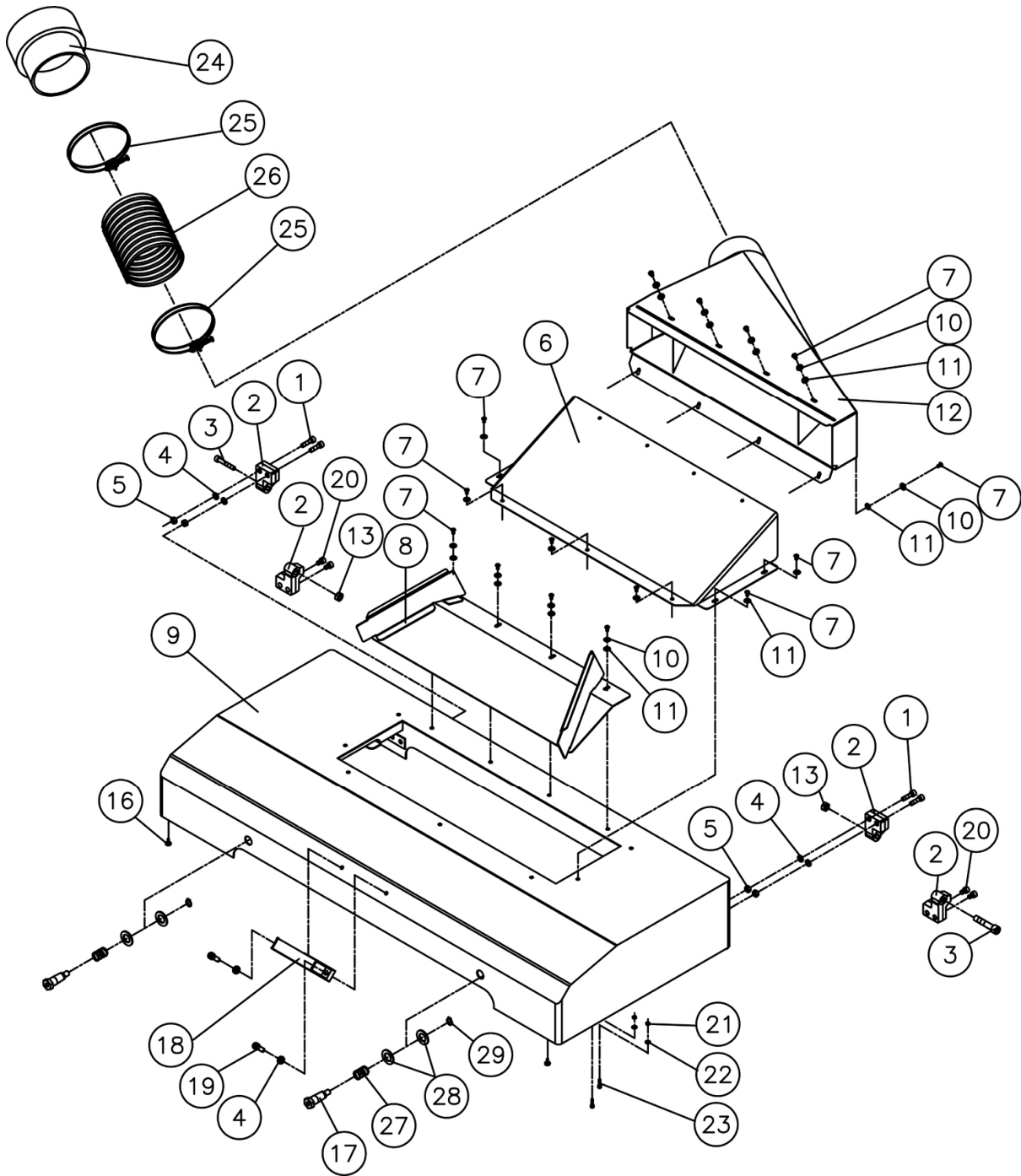
JWP-2510 Base Assembly

| Index No. | Part No. | Description | Size | Qty |
|-----------|--------------|---|------------------|-----|
| 55 | WP2510-655 | Self-Tapping Screw | M3x1.06Px8 | 2 |
| 56 | WP2510-656 | Gasket | | 1 |
| 57 | WP2510-657 | Junction Box Cover | | 1 |
| 58 | TS-1533032 | Pan Head Screw | M5x10 | 4 |
| 59 | WP2510-233 | Chain | #40 x 58P | 1 |
| 60 | WP2510-660 | S-Ring | | 3 |
| 61 | WP2510-661 | Sprocket | | 1 |
| 62 | WP2510-662 | S-Ring | | 1 |
| 63 | BB-6203VV | Ball Bearing | 6203VV | 2 |
| 64 | WP2510-664 | Housing | | 1 |
| 65 | TS-1505021 | Socket Head Cap Screw | M10x20 | 2 |
| 66 | VB-A88E | V-Belt | A82 | 3 |
| 67 | VB-A59E | V-Belt | A53 | 1 |
| 68 | WP2510-215 | Key | 5x5x12 | 3 |
| 69 | WP2510-669 | Key | 5x5x15 | 1 |
| 70 | WP2510-670 | Hand Wheel Shaft | | 1 |
| 71 | WP2510-671 | Spring | | 1 |
| 72 | WP2510-672AE | Power Cord | | 1 |
| 73 | WP2510-673 | Bushing | | 1 |
| 74 | WP2510-674 | Hand Wheel Assembly | | 1 |
| 75 | TS-1550041 | Flat Washer | M6 | 1 |
| 76 | TS-1551041 | Lock Washer | M6 | 1 |
| 77 | TS-1503051 | Socket Head Cap Screw | M6x20 | 1 |
| 78 | WP2510-678 | Shaft | | 1 |
| 79 | WP2510-679 | Sprocket | | 1 |
| | WP2510-GBA | Gearbox Assembly (#68, #80-#84, #86, #88-#102, #104-#114, #116) | | 1 |
| 80 | WP2510-680 | S-Ring | | 2 |
| 81 | WP2510-681 | Sprocket | | 1 |
| 82 | WP2510-682 | C-Ring | | 1 |
| 83 | BB-6205ZZ | Ball Bearing | 6205ZZ | 2 |
| 84 | WP2510-684 | Shaft | | 1 |
| 85 | WP2510-685AE | Motor, M2 | 1/2HP, 400V, 3Ph | 1 |
| 86 | WP2510-686 | Key | 5x5x22 | 1 |
| 87 | WP2510-687 | Main Motor Cord | | 1 |
| 88 | WP2510-688 | Gear | | 1 |
| 89 | WP2510-689 | Bushing | | 1 |
| 90 | BB-6204ZZ | Ball Bearing | 6204ZZ | 1 |
| 91 | WP2510-691 | Gearbox | | 1 |
| 92 | WP2510-692 | Oil Seal | | 1 |
| 93 | TS-1490041 | Hex Cap Screw | M8x25 | 4 |
| 94 | TS-2361081 | Lock Washer | M8 | 4 |
| 95 | TS-1550061 | Flat Washer | M8 | 4 |
| 96 | WP2510-696 | Worm | | 1 |
| 97 | WP2510-697 | Gear | 24T | 1 |
| 98 | BB-6203ZZ | Ball Bearing | 6203ZZ | 2 |
| 99 | BB-6201ZZ | Ball Bearing | 6201ZZ | 1 |
| 101 | WP2510-6101 | Gear | 60T | 2 |
| 102 | WP2510-6102 | Shaft | | 1 |
| 104 | WP2510-6104 | Oil Seal | | 1 |
| 105 | WP2510-6105 | Gasket | | 1 |
| 106 | WP2510-6106 | Gearbox Cover | | 1 |
| 107 | TS-1503061 | Socket Head Cap Screw | M6x25 | 6 |
| 108 | WP2510-6108 | Pin | | 2 |
| 109 | WP2510-6109 | Sprocket | | 1 |
| 110 | WP2510-6110 | S-Ring | | 2 |
| 111 | BB-6202ZZ | Ball Bearing | 6202ZZ | 2 |

JWP-2510 Base Assembly

| Index No. | Part No. | Description | Size | Qty |
|-----------|-------------|---------------|--------|-----|
| 112 | WP2510-6112 | Shaft | | 1 |
| 113 | WP2510-124 | Key | 5x5x20 | 1 |
| 114 | WP2510-6114 | Gear | 20T | 1 |
| 116 | WP2510-6116 | Oil Plug | | 2 |
| 134 | WP2510-6134 | Junction Box | | 1 |
| 135 | TS-1540061 | Hex Nut | M8 | 1 |
| 136 | TS-2361081 | Lock Washer | M8 | 1 |
| 137 | TS-1550061 | Flat Washer | M8 | 1 |
| 138 | TS-1490091 | Hex Cap Screw | M8x50 | 1 |
| 139 | WP2510-6139 | Screw | M5x6 | 2 |
| 140 | WP2510-6140 | Star Washer | M5 | 2 |

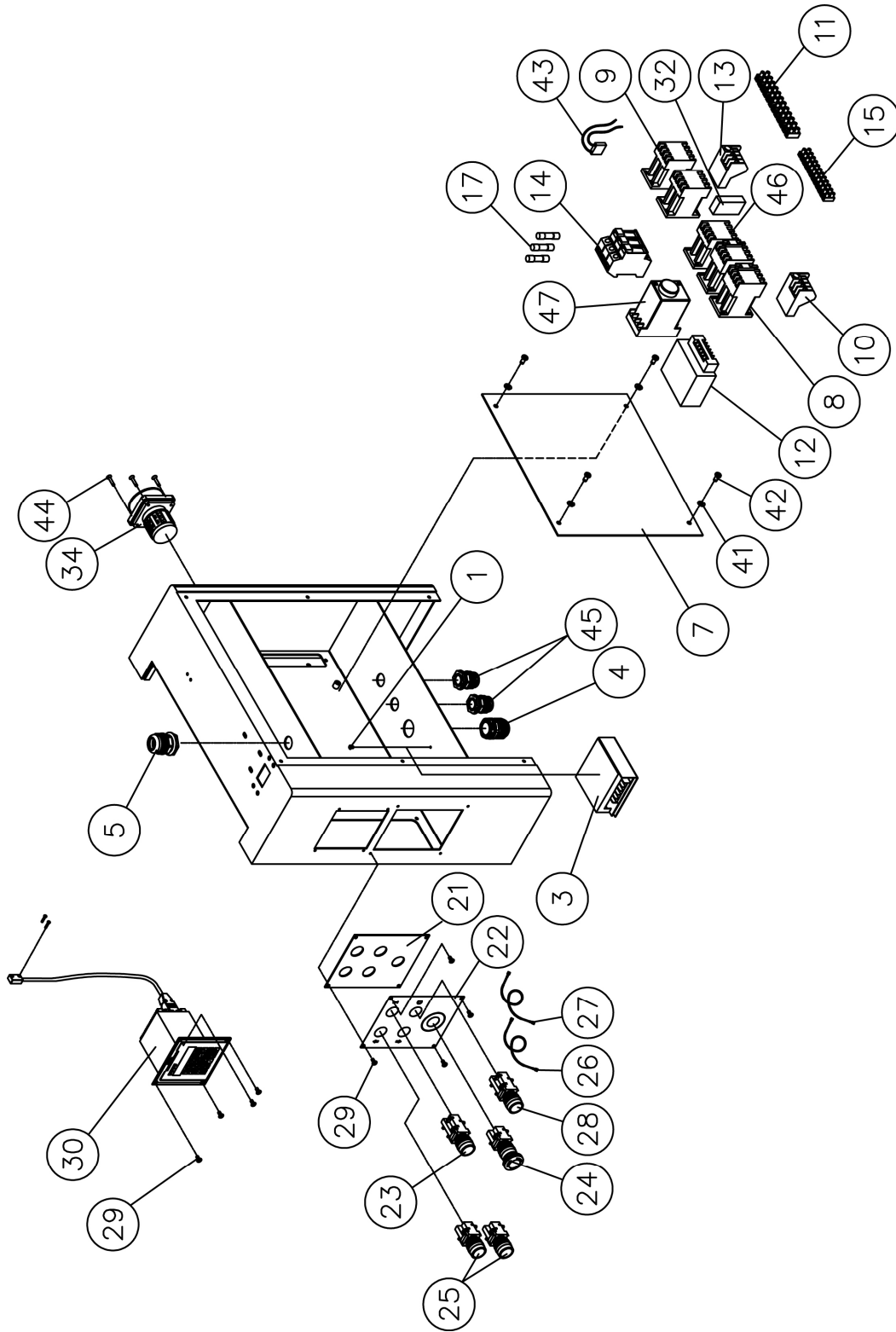
JWP-2510 Top Cover Assembly



JWP-2510 Top Cover Assembly

| Index No. | Part No. | Description | Size | Qty |
|-----------|--------------|--------------------------|--------|-----|
| 1 | TS-1504061 | Socket Head Cap Screw | M8x30 | 4 |
| 2 | WP2510-302 | Hinge | | 4 |
| 3 | TS-1505111 | Socket Head Cap Screw | M10x70 | 2 |
| 4 | TS-1551061 | Lock Washer | M8 | 6 |
| 5 | TS-1540061 | Hex Nut | M8 | 4 |
| 6 | WP2510-306 | Upper Cover | | 1 |
| 7 | TS-2246122 | Button Head Socket Screw | M6x12 | 19 |
| 8 | WP2510-308 | Deflection Plate | | 1 |
| 9 | WP2510-309E | Top Cover | | 1 |
| 10 | TS-2361061 | Lock Washer | M6 | 19 |
| 11 | TS-1550041 | Flat Washer | M6 | 19 |
| 12 | 6012181 | Dust Chute | | 1 |
| 13 | TS-1541041 | Nylon Insert Lock Nut | M10 | 2 |
| 16 | WP2510-316 | Pad | | 2 |
| 17 | 6012190E | Shoulder Screw | | 2 |
| 18 | 6012189 | Handle | | 1 |
| 19 | TS-1504051 | Socket Head Cap Screw | M8x25 | 2 |
| 20 | TS-1504071 | Socket Head Cap Screw | M8x35 | 4 |
| 21 | TS-1540021 | Hex Nut | M4 | 2 |
| 22 | TS-1550021 | Flat Washer | M4 | 2 |
| 23 | TS-1501051 | Socket Head Cap Screw | M4x16 | 2 |
| 24 | WP2510-324E | Adaptor | | 1 |
| 25 | WP2510-325E | Retainer | | 2 |
| 26 | WP2510-326E | Hose | | 1 |
| 27 | JWP201-330E | Spring | | 2 |
| 28 | JWP201-331E | Special Washer | | 4 |
| 29 | JWP201-332EA | Retainer Ring | | 2 |

JWP-2510 Electrical Box Assembly



JWP-2510 Electrical Box Assembly

| Index No. | Part No. | Description | Size | Qty |
|-----------|---------------|--|------------------|-----|
| 1 | TS-1531012 | Screw | M3x6 | 2 |
| 3 | WP2510-703 | Power Supply, N | | 1 |
| 4 | WP2510-704AE | Strain Relief | PG13.5 | 1 |
| 5 | WP2510-705AE | Strain Relief | PG21 | 1 |
| 7 | WP2510-707A | Electrical Board | | 1 |
| 8 | WP2510-708AEA | Contactora (for 15HP Motor, Δ-Running), KM1/2. | MA-18 | 2 |
| 9 | WP2510-709AE | Contactora (for 1/2HP Motor), KM4, KM5 | | 2 |
| 10 | WP2510-710AEA | Overload (for 15HP Conductor), OL1 | RA-20-18(15-22A) | 1 |
| 11 | WP2510-711AEA | Terminal Board | | 1 |
| 12 | WP2510-712AE | Transformer, TR | | 1 |
| 13 | WP2510-713 | Overload (for 1/2HP Conductor), OL2 | RA-20 (1.6-2.5A) | 1 |
| 14 | WP2510-714A | Fuse Support Base | | 3 |
| 15 | WP2510-715AEA | Terminal Board | | 1 |
| 17 | WP2510-717A | Fuse, F1, F2, F3 | 2A | 3 |
| 21 | WP2510-721E | Button Support Plate | | 1 |
| 22 | WP2510-722E | Button Support Plate Label | | 1 |
| 23 | WP2510-723AE | On Switch w/light, S2 (H) | | 1 |
| 24 | WP2510-724AE | E-Stop Switch, S1 | | 1 |
| 25 | WP2510-725AE | Table Up/Down Switch, S4, S5 | | 2 |
| 26 | WP2510-726AE | Connection Cord | | 1 |
| 27 | WP2510-727AE | Connection Cord | | 1 |
| 28 | WP2510-728AE | Off Switch, S3 | | 1 |
| 29 | TS-2244102 | Socket Head Button Screw | M4x10 | 8 |
| 30 | WP2510-417AE | Controller, E | | 1 |
| 31 | WP2510-731AE | Connection Cord | | 1 |
| 32 | WP2510-732 | Connection Plate | | 1 |
| 34 | WP2510-734AE | Main Power Switch, QS | | 1 |
| 41 | TS-1550041 | Flat Washer | M6 | 4 |
| 42 | WP2510-741E | Screw | M6x12 | 4 |
| 43 | WP2510-743AE | Sunbber Circuits | | 1 |
| 44 | JWP201-481 | Socket Head Flat Screw | M4 x 0.7P x 25 | 4 |
| 45 | JWP2510-745 | Strain Relief | PGA16 | 3 |
| 46 | JWP2510-746 | Contactora (for 15HP Motor, Y-Starting), KM3 | MA-15 | 1 |
| 47 | JWP2510-747 | Timer, TM | | 1 |

JWP-2510
1791303T
400/50/3

| | colour of strands | Litzenfarben | couleur des cordons |
|------|-------------------|--------------|---------------------|
| BK | black | schwarz | noir |
| WH | white | weiß | blanc |
| BU | blue | blau | bleu |
| YE | yellow | gelb | jaune |
| RD | red | rot | rouge |
| BN | brown | braun | brun |
| GY | grey | grau | gris |
| GNYE | green-yellow | grün-gelb | vert-jaune |
| OG | orange | orange | orange |
| VT | violet | violett | violet |

| | meaning of symbol | Bedeutung der Zeichen | interprétation |
|-----|----------------------|-------------------------|----------------------------------|
| M1 | motor | Hauptmotor | moteur |
| M2 | motor | Tischmotor | moteur |
| KM1 | magnetic switch | Hauptschütz | contacteur principale |
| KM2 | magnetic switch | Schütz | contacteur |
| KM3 | magnetic switch | Schütz | contactreuer |
| KM4 | magnetic switch up | Tischmotor Schütz • | contactreuer motor table |
| KM5 | magnetic switch down | Tischmotor Schütz • | contacteur motor table |
| F1 | fuse | Sicherung | fusible |
| F2 | fuse | Sicherung | fusible |
| F3 | fuse | Sicherung | fusible |
| S1 | e-stop | Not-Aus Taster | bouton arret d'urgence |
| S2 | on switch | Ein Taster | bouton marche |
| S3 | off switch | AusTaster | bouton arret |
| S4 | up switch | Tisch hoch Taster | bouton table mount |
| S5 | down switch | Tisch nach unten Taster | bouton table descend |
| QS | main switch | Hauptschalter | interrupteur principale |
| TR | transformer | Transformator | transformateur |
| OL1 | overload cut-off | Überlastschuttschalter | déclencheur surcharge |
| OL2 | overload cut-off | Überlastschuttschalter | déclencheur surcharge |
| LS1 | limit switch | Positionsendschalter | micro |
| LS2 | limit switch | Positionsendschalter | micro |
| LS3 | limit switch | Positionsendschalter | micro |
| TM | timer | Zeitrelais | contacteur de temp |
| E | control board | Steuerplatine | Platine de control Platine de |
| N | power supply board | Netzteil | transformation voltage |

JWP-2510
1791303T
400/50/3

