

MINI SHEET METAL CUTTER

Model: MMS-1



OPERATION MANUAL

1.SAFETY WARNING & CAUTIONS

WARNING: When using tool, basic safety precautions should always be followed to reduce the risk of person injury and damage to equipment. **Read all instructions before using this tool!**

1. **Keep work area clean.** Cluttered areas invite injuries.
2. **Keep children away.** Children must never be allowed in the work area. Do not let them handle machines, tools, or extension cords.
3. **Do not force tool.** It will do the job better and more safety at the rate for which it was intended. Do not use inappropriate attachments in an attempt to exceed the tool capacity.
4. **Dress properly.** Do not wear loose clothing or jewelry as they can be caught in moving parts. Protective, electrically non-conductive clothes and non-skid footwear are recommended when working. Wear restrictive hair covering to contain long hair.
5. **Use eye and ear protection.** Always wear ISO approved impact safety goggles. Wear a full-face shield if you are producing metal filings or wood chips. Wear an ISO approved dust mask or respirator when working around metal, and chemical dusts and mists.
6. **Do not overreach.** Keep proper footing and balance at all times. Do not reach over or across running machine.
7. **Stay alert.** Watch what you are doing; use common sense. Do not operate any tool when you are tired.
8. **Check for damaged parts.** Before using any tool, any part that appears damaged should be carefully checked to determine that it will operate properly and perform its intended function. Check for alignment and binding of moving parts; any broken parts or mounting fixtures; and any other condition that may affect proper operation. Any part that is damaged should be properly repaired or replaced by a qualified technician.
9. **Replacement parts and accessories.** When servicing, use only identical replacement parts. Use of any other parts will void the warranty. Only use accessories intended for use with this tool. Approved accessories are available from the distributor.
10. **Do not operate tool if under the influence of alcohol or drugs.** Read warning labels on prescriptions to determine if your judgment of reflexes are impaired while taking drugs. If there is any doubt, do not operate the tool.

2.MAIN SPECIFICATION

Model: MMS-1

Max. Capacity: 1.5mm

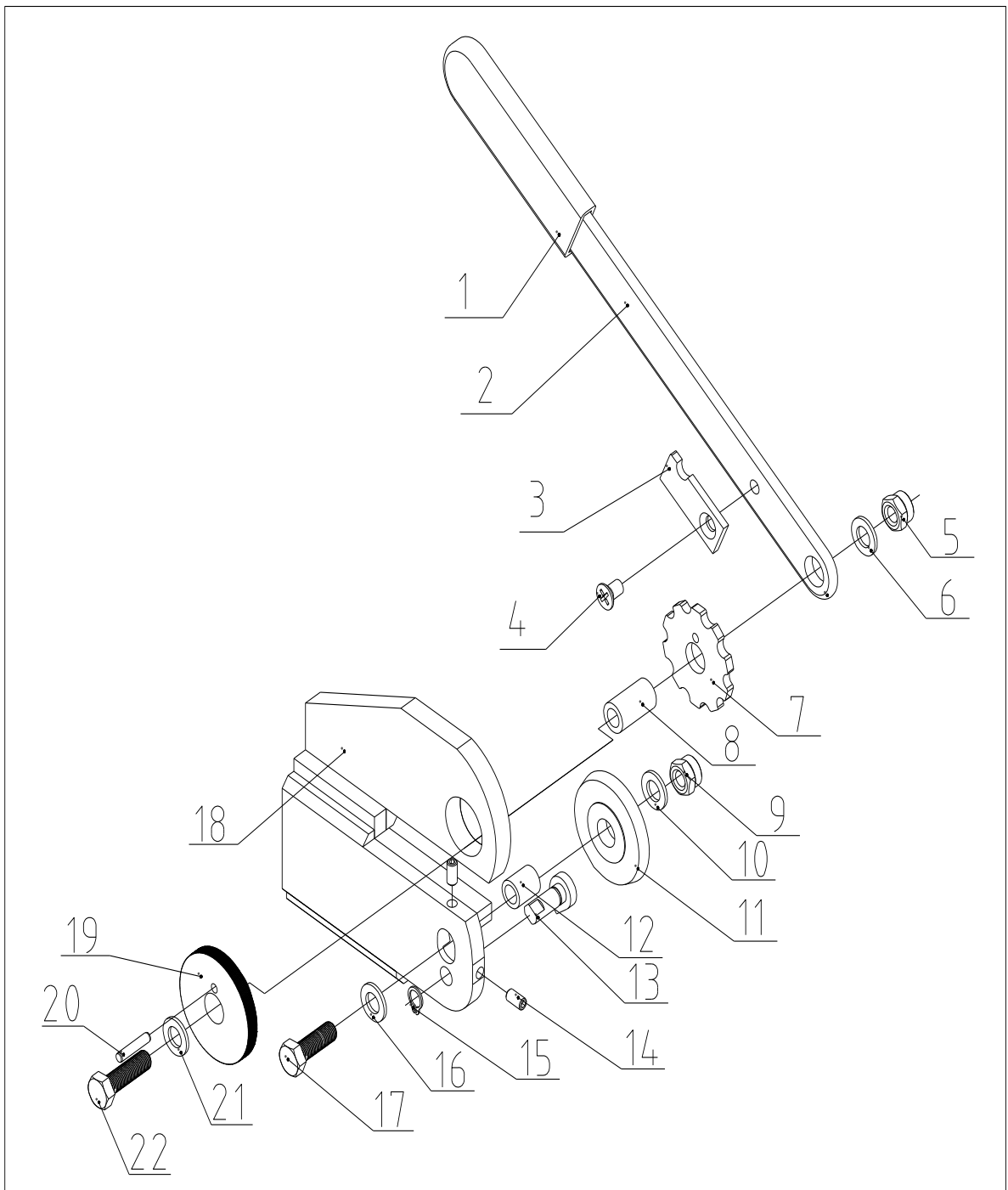
Packing size: 40X15X16cm

N.W./G.W.: 2/2.5kgs

3.Use and Function

Mini sheet metal cutter MMS-1 is a kind of small plate shears which is for cutting sheet metals by manual labor. The Shears has the characteristics of simple in structure, easy to adjust, labor saving in operation, perfect in function, easy to carry and long service life, etc. The Shears is suitable for cutting iron sheet and nonferrous metal sheet with the maximum thickness of 2mm, and for cutting paper sheet, leather and rubber sheet with the maximum thickness of more..

4.ASSEMBLY DIAGRAM



5.PARTS LIST

Parts No.	Description	Q'ty	Parts No.	Description	Q'ty
1	HANDLE GRIP	1	12	SLEEVE	1
2	HANDLE	1	13	CAM	1
3	PALLET	1	14	HOLDING SCREW	2
4	SCREW M6X10	1	15	RING	1
5	HEX NUT M8	1	16	FLAT WASHER	1
6	FLAT WASHER	1	17	HEX BOLTS M8X25	1
7	TURNING WHEEL	1	18	STAND	1
8	SLEEVE	1	19	ROTARY KNIFE	1
9	HEX NUT M8	1	20	ROD PIN 4X20	1
10	FLAT WASHER	1	21	FLAT WASHER	1
11	FIXED KNIFE	1	22	HEX BOLTS M8X35	1

Note: This manual is only for your reference. Owing to the continuous improvement of the machine, changes may be made at any time without obligation on notice.