

SHEET METAL PLATE CUTTER

Model: MMS-3



OPERATION MANUAL

I . SAFETY WARNING & CAUTIONS

WARNING: When using tool, basic safety precautions should always be followed to reduce the risk of person injury and damage to equipment. **Read all instructions before using this tool!**

1. **Keep work area clean.** Cluttered areas invite injuries.
2. **Keep children away.** Children must never be allowed in the work area. Do not let them handle machines, tools, or extension cords.
3. **Do not force tool.** It will do the job better and more safety at the rate for which it was intended. Do not use inappropriate attachments in an attempt to exceed the tool capacity.
4. **Dress properly.** Do not wear loose clothing or jewelry as they can be caught in moving parts. Protective, electrically non-conductive clothes and non-skid footwear are recommended when working. Wear restrictive hair covering to contain long hair.
5. **Use eye and ear protection.** Always wear ISO approved impact safety goggles. Wear a full-face shield if you are producing metal filings or wood chips. Wear an ISO approved dust mask or respirator when working around metal, and chemical dusts and mists.
6. **Do not overreach.** Keep proper footing and balance at all times. Do not reach over or across running machine.
7. **Stay alert.** Watch what you are doing; use common sense. Do not operate any tool when you are tired.
8. **Check for damaged parts.** Before using any tool, any part that appears damaged should be carefully checked to determine that it will operate properly and perform its intended function. Check for alignment and binding of moving parts; any broken parts or mounting fixtures; and any other condition that may affect proper operation. Any part that is damaged should be properly repaired or replaced by a qualified technician.
9. **Replacement parts and accessories.** When servicing, use only identical replacement parts. Use of any other parts will void the warranty. Only use accessories intended for use with this tool. Approved accessories are available from the distributor.
10. **Do not operate tool if under the influence of alcohol or drugs.** Read warning labels on prescriptions to determine if your judgment of reflexes are impaired while taking drugs. If there is any doubt, do not operate the tool.

II . MAIN SPECIFICATION

Model: MMS-3

Max. Capacity: 3mm

Packing size: 32x24x34cm

N.W./G.W.: 21/22kgs

III. OPERATION

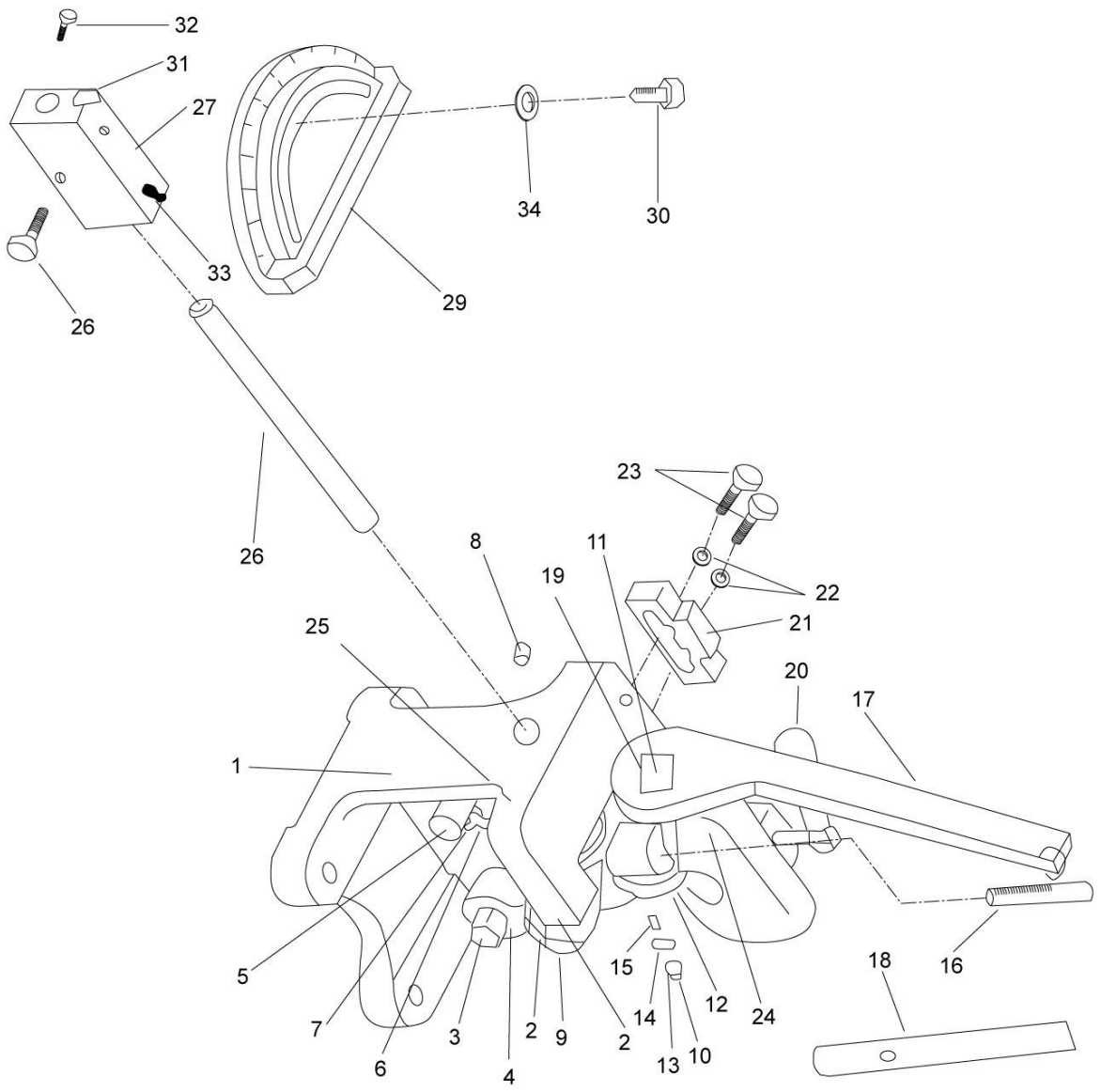
Multi-purpose cutting equipment is an assembly of cutting machine, guide block (No.21 on parts of explosive drawing). Cutting angle, direction can be achieved by either guide block or meter gauge. Working piece is able to have a parallel cutting while the edge of raised portion on the top of guide block is alignment with cutting blade, it also can be cut to required curve (or outline) with guide block is set at a right position. Working piece can be fixed on this equipment by set bolt while operation.

Important: the position of outer edger of lower blade should over the bottom of the groove at the edge of upper blade while operation.

IV.PARTS LIST

Parts No.	Description	Q'ty	Parts No.	Description	Q'ty
1	Body frame	1	18	Heavy duty handle	1
2	Blade rest	1	19	Handle, hexagonal head screw	1
3	Blade eccentric shaft	1	20	Portable & stop handle	1
4	Nut	1	21	Guide block	1
5	Blade eccentric adjusting shaft	1	22	Washer, flat	2
6	Hexagonal head screw	1	23	Hexagonal head screw	2
7	Nut	1	24	Oil injector	2
8	Nut	1	25	Screw, guide shaft	1
9	Blade shaft	1	26	Guide shaft	1
10	Blade	1	27	Guide block, meter gauge	1
11	Upper blade shaft	1	28	Screw	1
12	Gear type blade	1	29	Meter gauge	1
13	Key	2	30	Screw metal gauge	1
14	Washer flat	2	31	Needle, meter gauge	1
15	Nut	2	32	Screw	1
16	Set bolt	1	33	Spring pin	1
17	Handle (ratcheting)	1	34	Washer, flat	1

Assembly Drawing



Note: This manual is only for your reference. Owing to the continuous improvement of the machine, changes may be made at any time without obligation on notice.