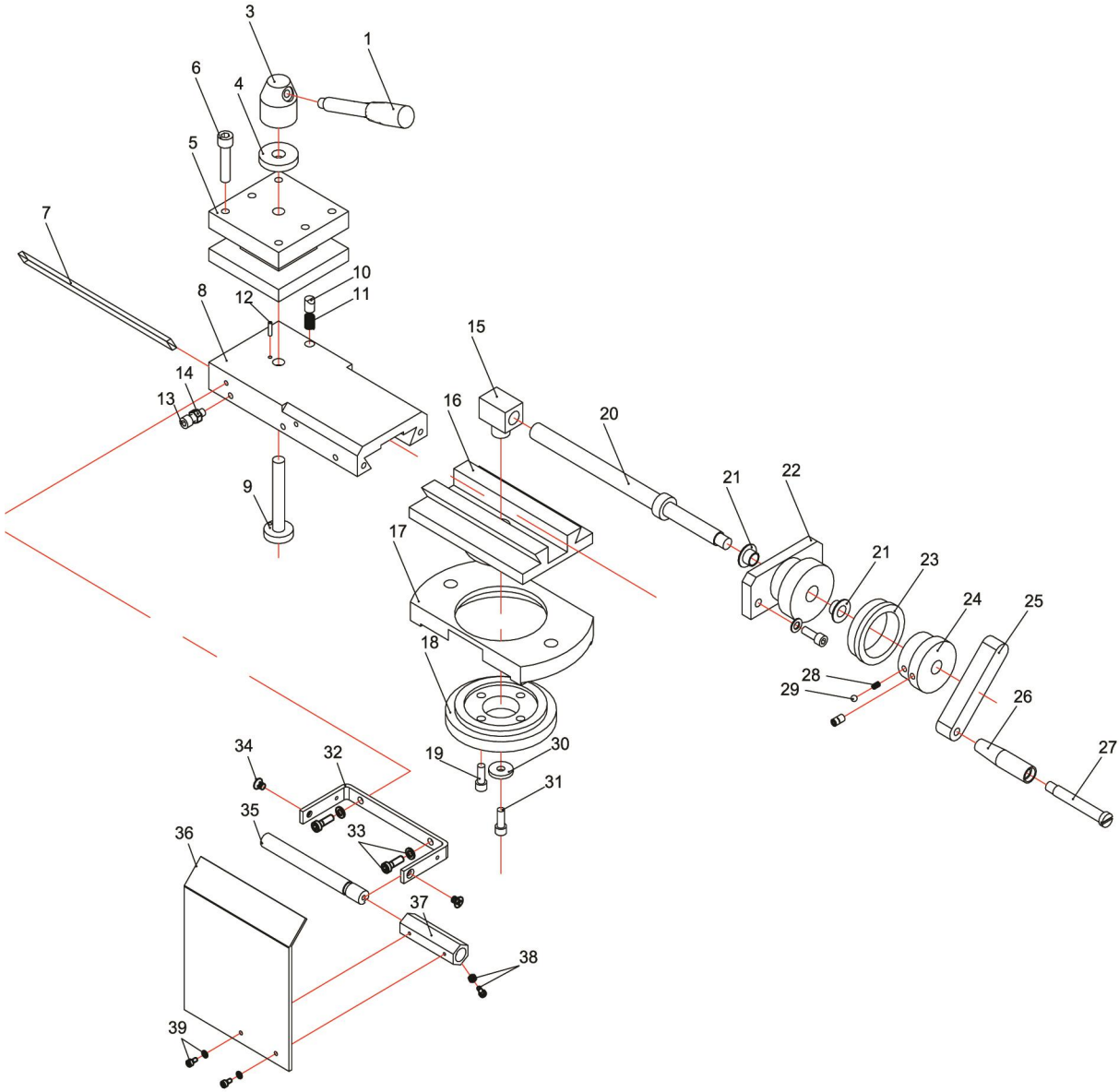


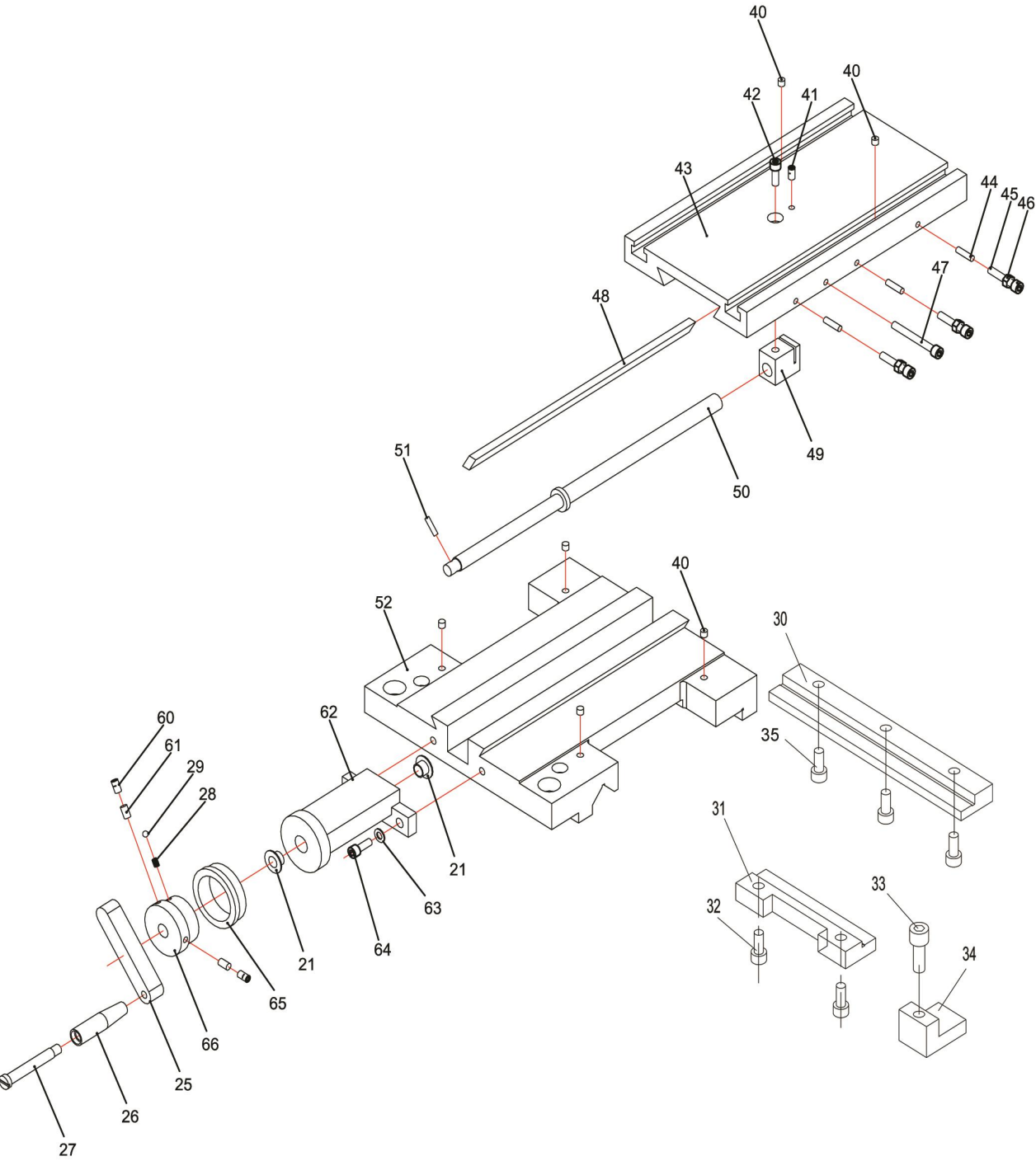
6.4 Exploded view of top slide



6.4.1 Spare part list of top slide

Index NO	Parts NO.	Description	Size	Qty
1	BD11TS-1	Clamping handle		1
3	BD11TS-3	Clamping nut quadruple tool holder		1
4	BD11TS-4	Washer		1
5	BD11TS-6	Quadruple tool holder		1
6	BD11TS-5	Hex socket head screwDIN 912	M8×35	8
7	BD11TS-7	Gib top slide		1
8	BD11TS-8	Top slide		1
9	BD11TS-9	Threaded bolt tool holder		1
10	BD11TS-10	Stop pin		1
11	BD11TS-11	Spring		1
12	BD11TS-12	Fixing pin		1
13	BD11TS-13	Hex socket head screwDIN 912	M6×16	3
14	BD11TS-14	Nut	M6	3
15	BD11TS-15	Spindle nut		1
16	BD11TS-16	Dovetail guideway top slide		1
17	BD11TS-17	Clamp collar		1
18	BD11TS-18	Scale collar		1
19	BD11TS-19	Hex socket head screwDIN 912	M6×16	1
20	BD11TS-20	Spindle		1
21	BD11TS-21	Slide bearing		1
22	BD11TS-22	Bearing pedestal spindle		1
23	BD11TS-23	Scale collar handwheel		1
24	BD11TS-24	Scale guide		1
25	BD11TS-25	Lever		1
26	BD11TS-26	Handle		1
27	BD11TS-27	Clamping bolt		1
28	BD11TS-28	Spring		1
29	BD11TS-29	Steel ball		1
30	BD11TS-30	Pulley		1
31	BD11TS-31	Hex socket head screwDIN 912	M6×25	1
32	BD11TS-32	Attachment handle		1
33	BD11TS-33	Hex socket head screw and washerDIN 912	M5×12	2
34	BD11TS-34	Countersunk screw	M5×6	2
35	BD11TS-35	Shaft		1
36	BD11TS-36	Chip Shield		1
37	BD11TS-37	Hex case		1
38	BD11TS-38	Hex socket head screw and nutDIN 912	M3×8	1
39	BD11TS-39	Hex socket head screw and washerDIN 912	M3×6	2

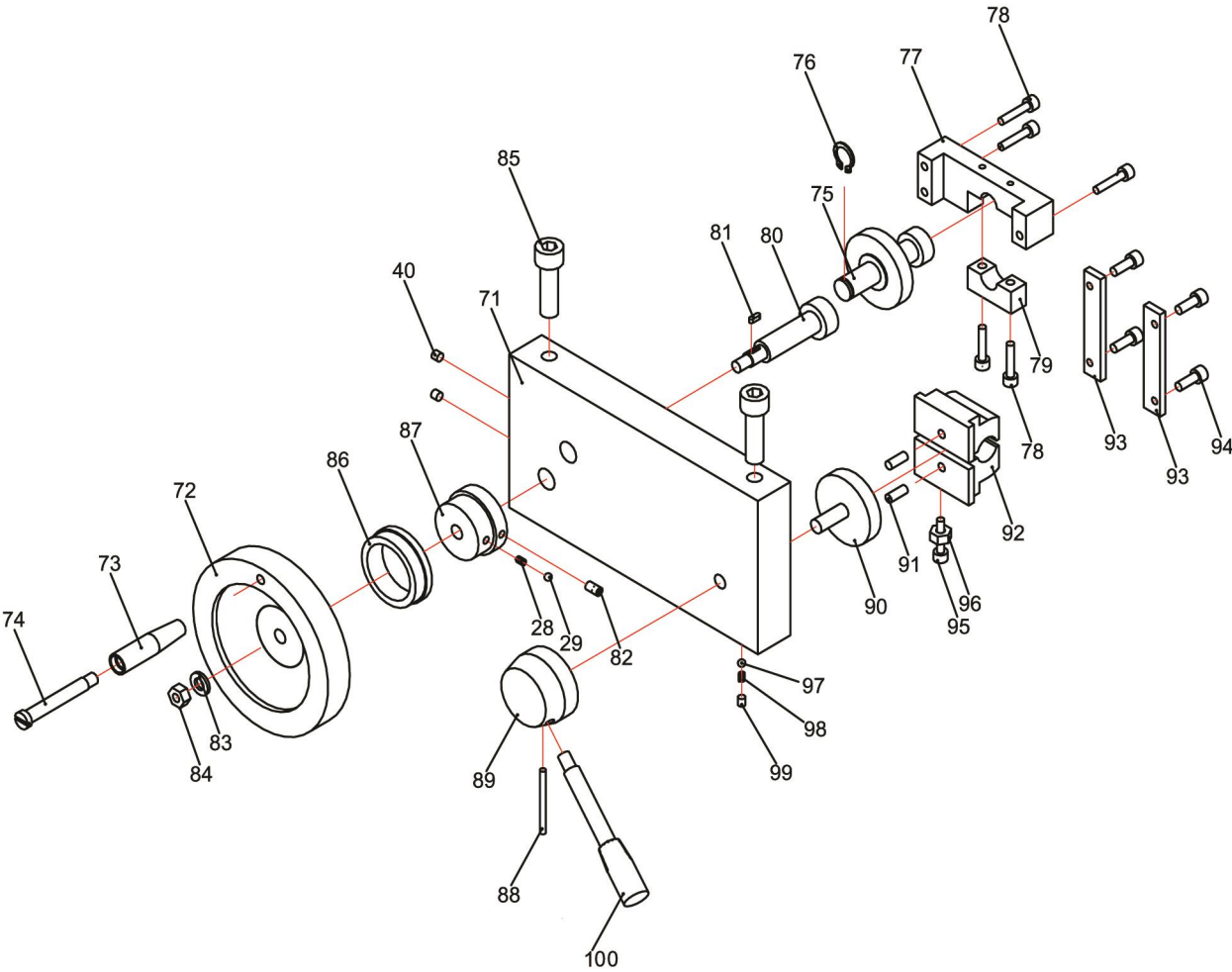
6.5 Exploded view of cross slide



6.5.1 Spare parts list of cross slide

Index NO	Parts NO.	Description	Size	Qty
21	BD11CS-21	Slide bearing		2
25	BD11CS-25	Lever		1
26	BD11CS-26	Handle		1
27	BD11CS-27	Clamping bolt		1
28	BD11CS-28	Spring		1
29	BD11CS-29	Steel ball		1
30	BD11CS-30	Back clamp		1
31	BD11CS-31	Before clamp		1
32	BD11CS-32	Hex socket head screw DIN 912	M8X30	2
33	BD11CS-33	Hex socket head screw DIN 912	M8X40	1
34	BD11CS-34	Brake clamp		1
35	BD11CS-35	Hex socket head screw DIN 912	M8X30	3
40	BD11CS-40	Oil nipple	6mm	6
41	BD11CS-41	Thread pin DIN 914	M6×10	1
42	BD11CS-42	Hex socket head screw DIN 912	M8×10	1
43	BD11CS-43	Cross slide		1
44	BD11CS-44	Brush pin		3
45	BD11CS-45	Hex socket head screw DIN 912	M6×30	1
46	BD11CS-46	Nut	M6	1
47	BD11CS-47	Hex socket head screw DIN 912	M6×30	1
48	BD11CS-48	Gib cross slide		1
49	BD11CS-49	Spindle nut		1
50	BD11CS-50	Spindle		1
51	BD11CS-51	Spring pin DIN 1481	4×16	1
52	BD11CS-52	Dovetail guideway		1
60	BD11CS-60	Thread pin DIN 913	M6×10	3
61	BD11CS-61	Brush pin		3
62	BD11CS-62	Bearing pedestal spindle		1
63	BD11CS-63	Washer DIN 6340	8	2
64	BD11CS-64	Hex socket head screw DIN 912	M8×20	1
65	BD11CS-65	Scale collar		1
66	BD11CS-66	Guide pulley		1

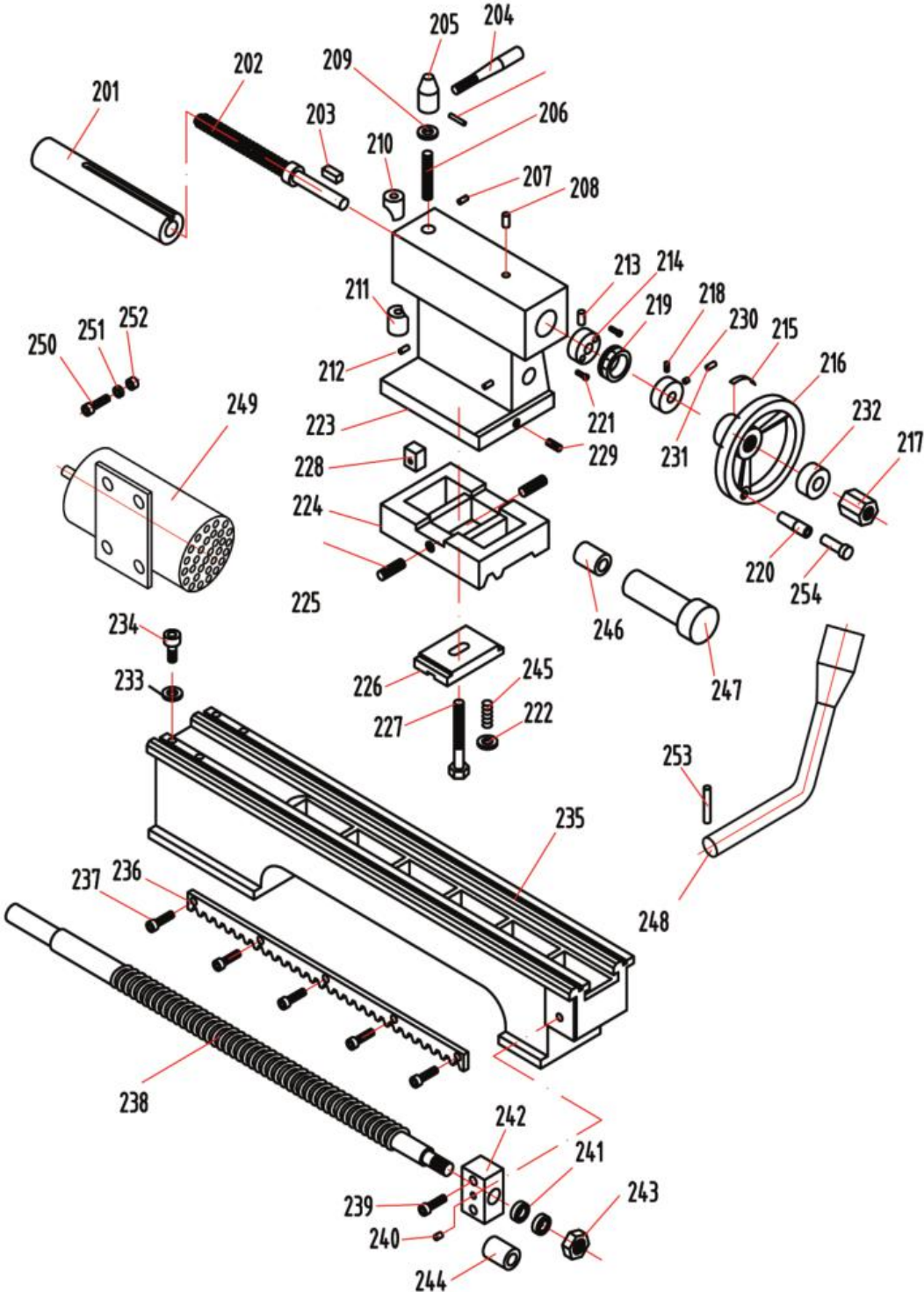
6.6 Exploded view of apron



6.6 Spare parts list of apron

Index NO	Parts NO.	Description	Size	Qty
40	BD11AP-40	Oil nipple	6mm	2
71	BD11AP-71	Apron		1
72	BD11AP-72	Handwheel bed slide		1
73	BD11AP-73	Lever handwheel		1
74	BD11AP-74	Clamping bolt		1
75	BD11AP-75	Toothed wheel combination		1
76	BD11AP-76	Retaining ring		1
77	BD11AP-77	Retaining pedestal		1
78	BD11AP-78	Hex socket head screw DIN 912	M5×25	5
79	BD11AP-79	Thrust bearing		1
80	BD11AP-80	Shaft		1
81	BD11AP-81	Feather key	3X10	1
82	BD11AP-82	Thread pin DIN 915	M6X8	1
83	BD11AP-83	Disc	8	1
84	BD11AP-84	Hex nut	M8	1
85	BD11AP-85	Hex socket head screw DIN 912	M12×40	2
86	BD11AP-86	Scale collar		1
87	BD11AP-87	Guide pulley		1
88	BD11AP-88	Spring pin DIN 1481	4×50	1
89	BD11AP-89	collar		1
90	BD11AP-90	Stroke pulley lock nut		1
91	BD11AP-91	Stroke pivot lock nut		2
92	BD11AP-92	Lock nut		1
93	BD11AP-93	Guide rail lock nut		2
94	BD11AP-94	Hex socket head screw DIN 912	M6×16	4
95	BD11AP-95	Hex socket head screw DIN 912	M5×40	1
96	BD11AP-96	Hex nut	M5	1
97	BD11AP-97	Steel ball		1
98	BD11AP-98	Spring		1
99	BD11AP-99	Thread pin DIN 915	M6×6	1
100	BD11AP-100	Handle	M8	1

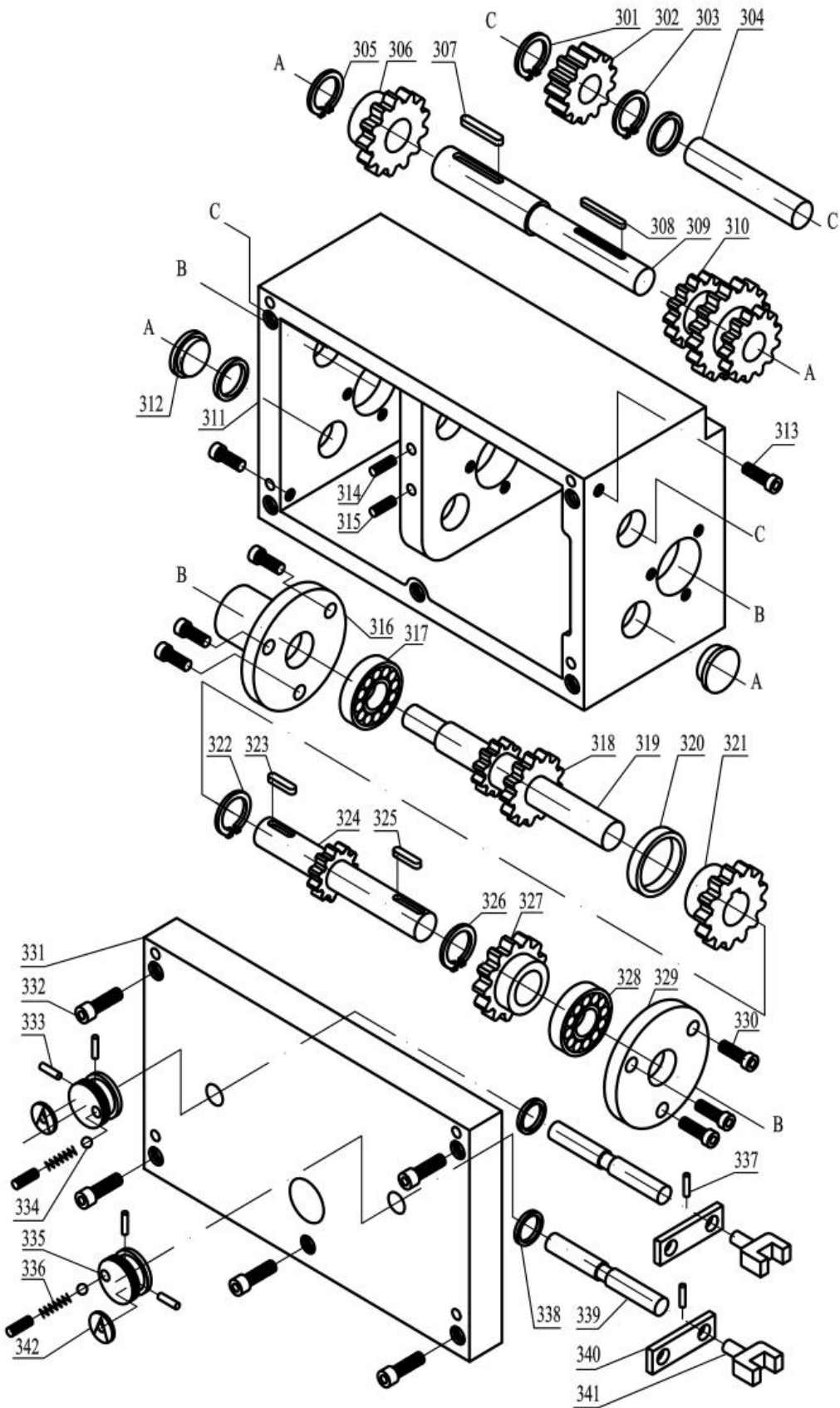
6.7 Exploded view of lathe bed



6.7 Spare parts list of lathe bed

Index NO	Parts NO.	Description	Size	Qty
201	BD11LB-201	Bush		1
202	BD11LB-202	Tailstock spindle		1
203	BD11LB-203	Key DIN 6885 - A 3 x 3 x 10		1
204	BD11LB-204	Clamping handle		1
205	BD11LB-205	Handle seat		1
206	BD11LB-206	Clamping lever		1
207	BD11LB-207	Threaded pin - M5 x 12		1
208	BD11LB-208	Lubricating nipple		1
209	BD11LB-209	Washer		1
210	BD11LB-210	Clamping piece spindle sleeve		1
211	BD11LB-211	Clamping piece spindle sleeve		1
212	BD11LB-212	Threaded pin - M5 x 12		2
213	BD11LB-213	Lubricating nipple		1
214	BD11LB-214	Piece of centering of spindle sleeve		1
215	BD11LB-215	Tailstock marking		1
216	BD11LB-216	Handlewheel		1
217	BD11LB-217	Nut		1
218	BD11LB-218	Spiral spring		1
219	BD11LB-219	Scales ring		1
220	BD11LB-220	Handle		1
221	BD11LB-221	Socket head screw DIN 912-M5X16		2
222	BD11LB-222	Washer DIN 6340-12		1
223	BD11LB-223	Tailstock		1
224	BD11LB-224	Tailstock base		1
225	BD11LB-225	Set Screw M8X45		2
226	BD11LB-226	Clamping plate		1
227	BD11LB-227	Hex cap bolt		1
228	BD11LB-228	Adjustment device		1
229	BD11LB-229	Threaded pin ISO 4028 - M6 x 16		1
230	BD11LB-230	Brass clamping piece		3
231	BD11LB-231	Socket head screw ISO 4028 - M6 x 10		3
232	BD11LB-232	Washer DIN 6340-8		
233	BD11LB-233	Lock washer DIN 6340-10		4
234	BD11LB-234	Hex head cap screw DIN 912-M10X35		4
235	BD11LB-235	Machine bed		1
236	BD11LB-236	Rack		1
237	BD11LB-237	Hex head cap screw DIN 912-M6X16		6
238	BD11LB-238	Lead screw		1
239	BD11LB-239	Hex head cap screw DIN 912-M8X20		2
240	BD11LB-240	Lubricating nipple		1
241	BD11LB-241	Bearing 51102		2
242	BD11LB-242	Bracket		1
243	BD11LB-243	Round nut M12X1.25		2
244	BD11LB-244	Shaft sleeve		1
245	BD11LB-245	Spiral spring		1
246	BD11LB-246	Shaft sleeve		1
247	BD11LB-247	Eccentric sha		1
248	BD11LB-248	Locking handle		1
249	BD11LB-249	Motor	230V	1
250	BD11LB-250	Set Screw		4
251	BD11LB-251	Washer		4
252	BD11LB-252	Nut		4
253	BD11LB-253	Spring pin ISO 8752 - A4 x 24		1
254	BD11LB-254	Handle		1

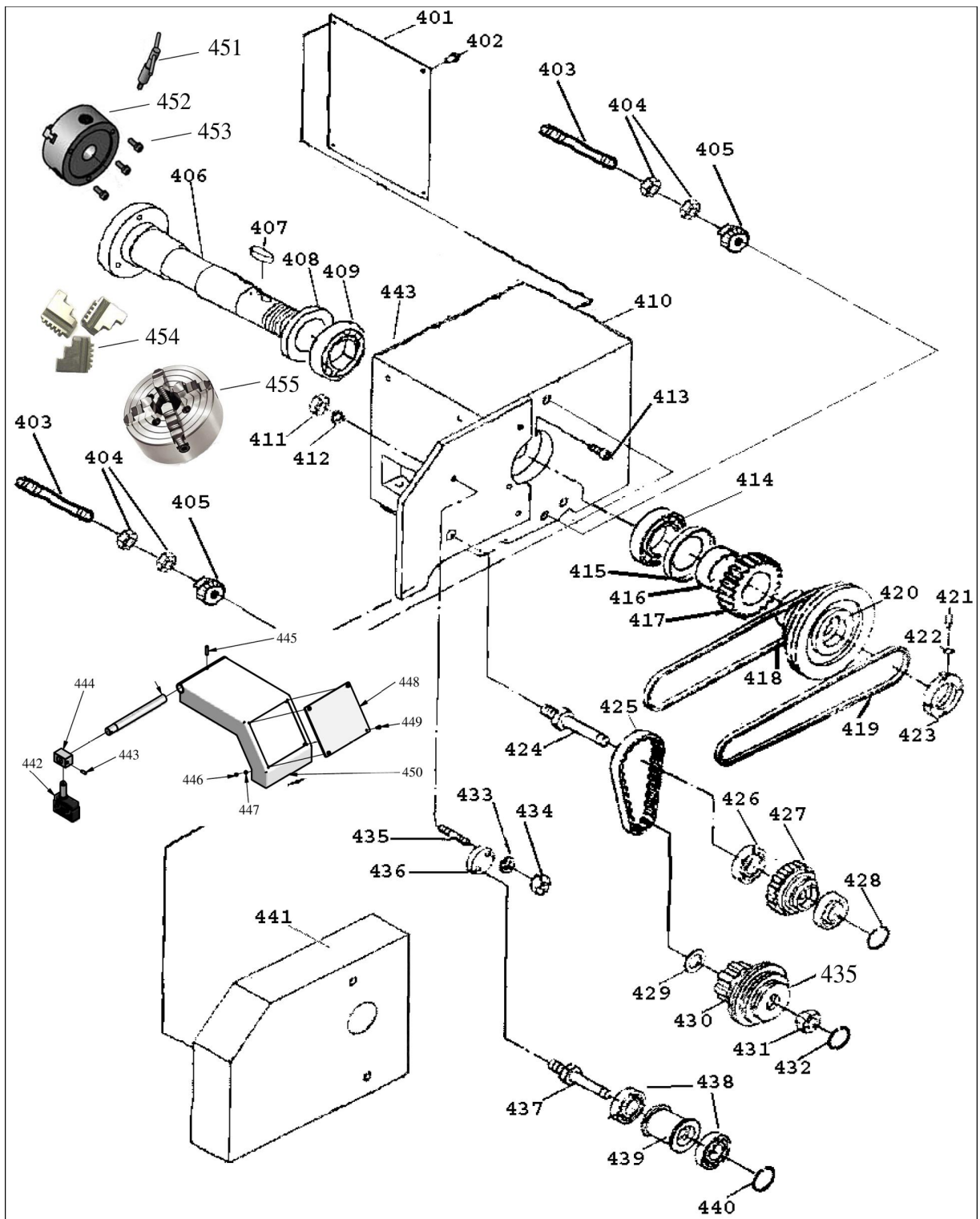
6.8 Exploded view of feed gear



6.8.1 Spare parts list of feed gear

Index NO	Parts NO.	Description	Size	Qty
301	BD11FG-301	Lock washer	Φ12	1
302	BD11FG-302	Gear wheel		1
303	BD11FG-303	Lock washer	Φ12	1
304	BD11FG-304	Shaft C		1
305	BD11FG-305	Lock washer		1
306	BD11FG-306	Gear wheel		1
307	BD11FG-307	Feather key	4×30	1
308	BD11FG-308	Feather key	4×60	1
309	BD11FG-309	Shaft A		1
310	BD11FG-310	Gearwheel combination		1
311	BD11FG-311	Gearwheel box		1
312	BD11FG-312	Set Screw		1
313	BD11FG-313	Set Screw		1
314	BD11FG-314	Screw DIN 912	M6×10	1
315	BD11FG-315	Screw DIN 912	M6×10	1
316	BD11FG-316	Flange		1
317	BD11FG-317	Bearing	180202	1
318	BD11FG-318	Gear wheel		1
319	BD11FG-319	Shaft		1
320	BD11FG-320	Shaft ring		1
321	BD11FG-321	Gear wheel		1
322	BD11FG-322	Lock washer	Φ15	1
323	BD11FG-323	Feather key DIN 6885	4×14	1
324	BD11FG-324	Long-face pinion		1
325	BD11FG-325	Feather key DIN 6885	4×10	1
326	BD11FG-326	Lock washer	Φ15	1
327	BD11FG-327	Gear wheel		1
328	BD11FG-328	Bearing DIN 620	180202	1
329	BD11FG-329	Flange cover of leadscrew		1
330	BD11FG-330	Allen screw	M6×12	3
331	BD11FG-331	Front plate		1
332	BD11FG-332	Steel ball	Φ5	2
333	BD11FG-333	Stud bolt	M6×10	2
334	BD11FG-334	Stud bolt	M6×10	2
335	BD11FG-335	Selector switch		2
336	BD11FG-336	Spring	0.8×45×11	2
337	BD11FG-337	Pin DIN 1481	Φ5×20	2
338	BD11FG-338	O-ring		2
339	BD11FG-339	Shaft		2
340	BD11FG-340	Plate		2
341	BD11FG-341	Gear Fork		2
342	BD11FG-342	Selector switch marking		2

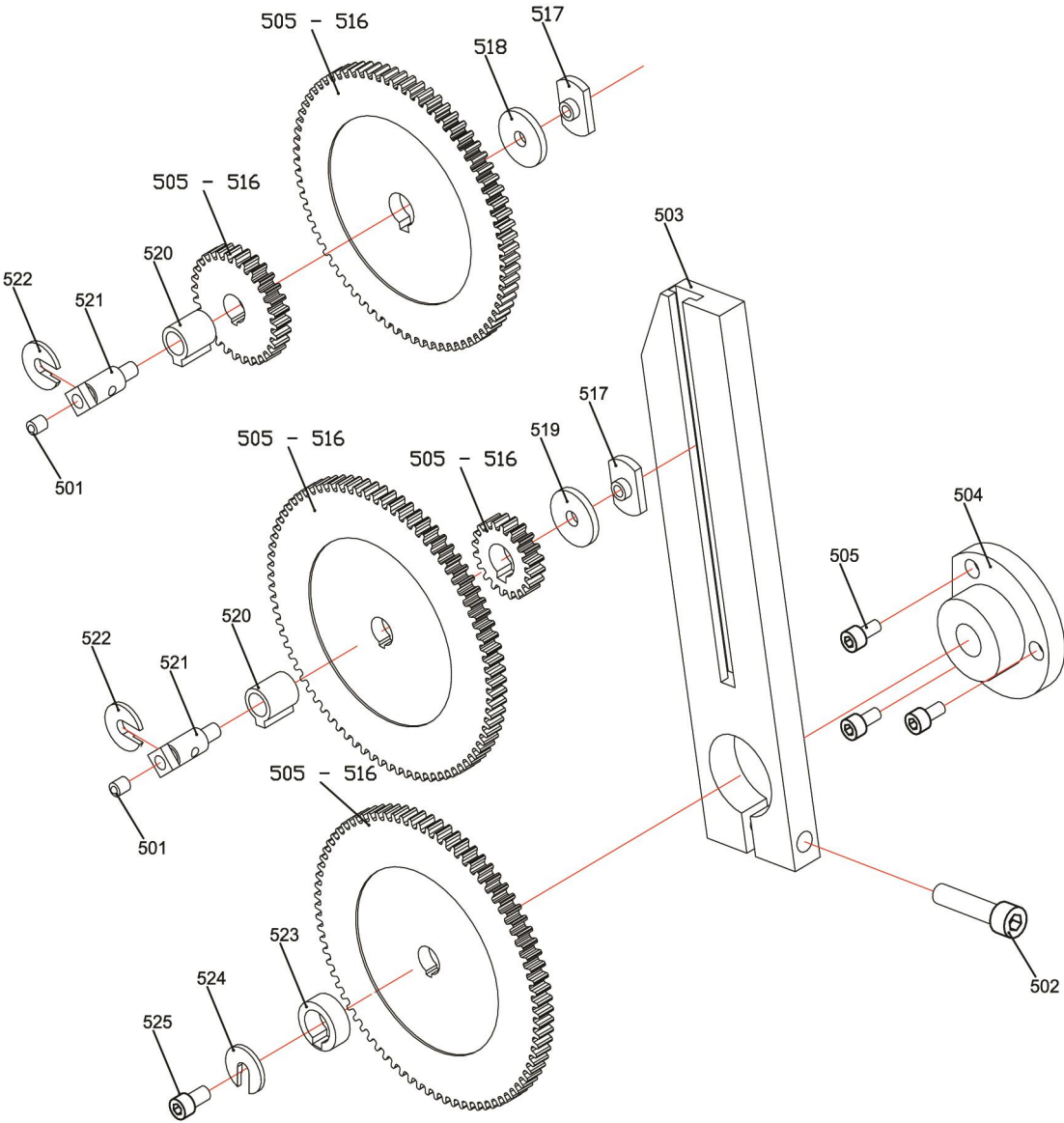
6.9 Exploded view of headstock



6.9.1 Spare parts list of headstock

Pos.	Parts NO.	Name	Size	Qty
401	BD11HS-401	Characteristics plate		1
402	BD11HS-402	Fastening screw	M4×10	4
403	BD11HS-403	Protective cover of thread rod		2
404	BD11HS-404	Nut DIN439	M10	4
405	BD11HS-405	Knurl nut		2
406	BD11HS-406	Work spindle		1
407	BD11HS-407	Feather key DIN 6885	8×45	1
408	BD11HS-408	Ring		1
409	BD11HS-409	Bearing	32009	2
410	BD11HS-410	headstock		1
411	BD11HS-411	Nut DIN439	M10	2
412	BD11HS-412	Washer DIN6340	10	2
413	BD11HS-413	Screw DIN912	M8×25	1
414	BD11HS-414	Bearing	32009	1
415	BD11HS-415	Ring		1
416	BD11HS-416	Bush		
417	BD11HS-417	Gearwheel		1
418	BD11HS-418	Short V-belt	O-710	1
419	BD11HS-419	Long V-belt	O-850	1
420	BD11HS-420	Pulley combination Work spindle		1
421	BD11HS-421	Allen screws	M5×12	2
423	BD11HS-423	Shaft nut (groove nut)		1
424	BD11HS-424	Driven shaft of motor		1
425	BD11HS-425	Synchronous belt	240L075	1
426	BD11HS-426	Bearing	180101	1
427	BD11HS-427	Combination of syn-chronous belt pulley	Φ135,32/84teeth	1
428	BD11HS-428	Screw		1
429	BD11HS-429	Washer		1
430	BD11HS-430	V-belt pulley combination	Φ28,6/18teeth	1
431	BD11HS-431	Washer		1
432	BD11HS-432	Allen screws	M6×20	1
433	BD11HS-433	Washer		1
434	BD11HS-434	Nut DIN439-M8		1
435	BD11HS-435	Allen screws		1
436	BD11HS-436	Eccentric plate of ten-sion pulley		1
437	BD11HS-437	Shaft of tension pulley		1
438	BD11HS-438	Bearing		2
439	BD11HS-439	Tension pulley		1
440	BD11HS-440	Circlip		1
441	BD11HS-441	protective cover of threadstock		1
442	BD11HS-442	Micro switch		1
443	BD11HS-443	Hexagonal cylindrical side screw setDIN912	M5×12	1
444	BD11HS-444	Shaft sleeve		1
445	BD11HS-445	Cylindrical pin	3×20	1
446	BD11HS-446	Nut DIN439	M4	4
447	BD11HS-447	Flat washer	Φ4	4
448	BD11HS-448	Protective glasses		1
449	BD11HS-449	Socket head cap screw DIN912	M4×10	4
450	BD11HS-450	Chuck shield		1
451	BD11HS-451	Key for 3 - jaw chuck	10mm	1
452	BD11HS-452	Three jaw chuck	K11-125	1
453	BD11HS-453	Screw	M8X35	3
454	BD11HS-454	Reverse 3 – jaw(Included in the chuck)		1
455	BD11HS-455	Four jaw chuck	K72-125	1

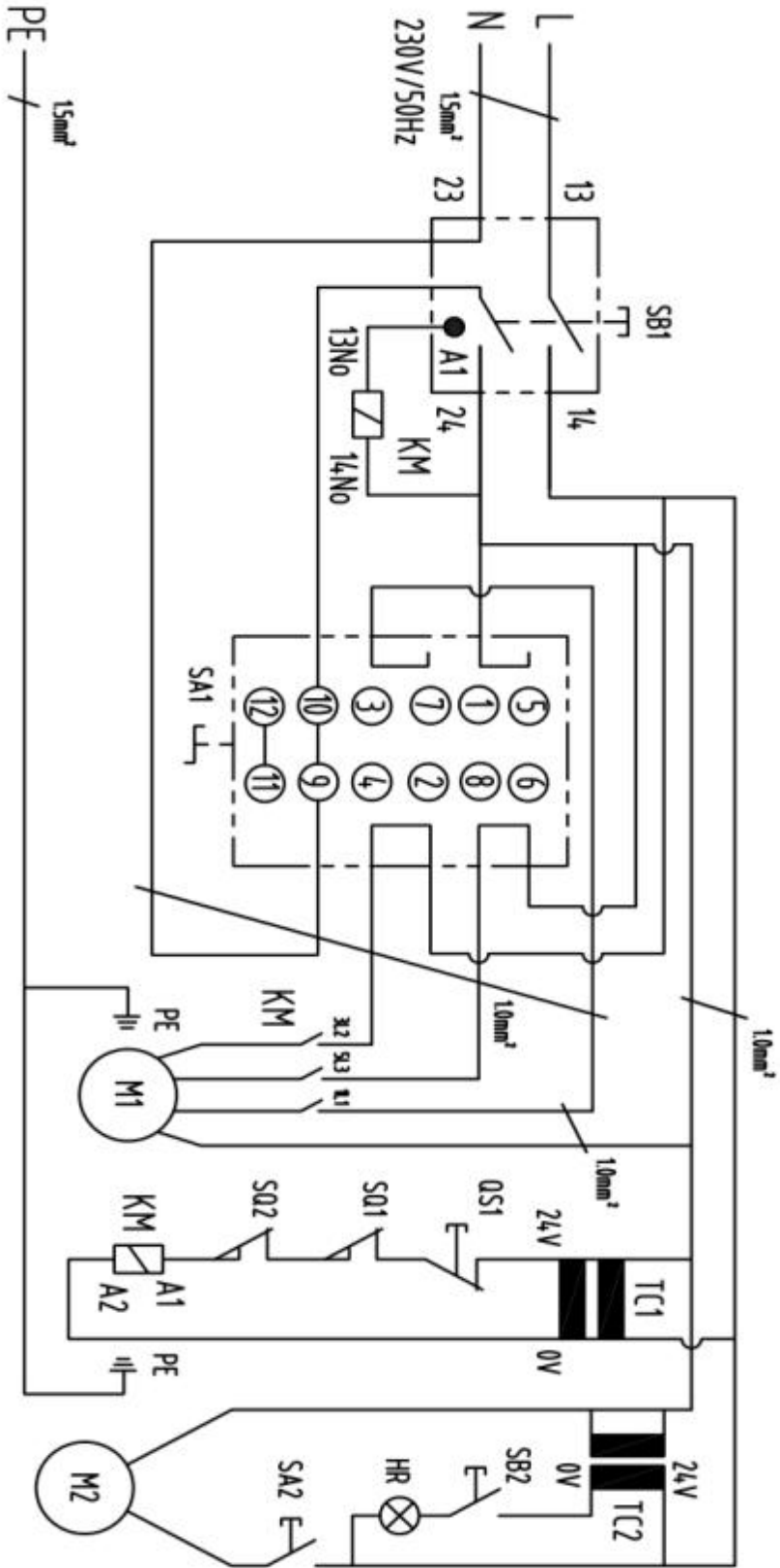
6.10 Exploded view of change gear



6.10 Spare parts list of change gear

Index NO	Parts NO.	Description	Size	Qty
501	CG-501	Oil nipple		2
502	CG-502	Hex socket head screw DIN 912	M8×35	1
503	CG-503	Change gear rail		1
504	CG-504	Bearing Pedestal		1
505	CG-505	Hex socket head screw DIN 912	M5×10	3
506	CG-506	Change gear	85	1
507	CG-507	Change gear	80	1
508	CG-508	Change gear	75	1
509	CG-509	Change gear	65	1
510	CG-510	Change gear	60	2
511	CG-511	Change gear	55	1
512	CG-512	Change gear	52	1
513	CG-513	Change gear	50	1
514	CG-514	Change gear	45	1
515	CG-515	Change gear	30	1
516	CG-516	Change gear	20	1
517	CG-517	Feather key	M5	2
518	CG-518	Spacer	1.5mm	1
519	CG-519	Spacer	3mm	1
520	CG-520	Connection case		2
521	CG-521	Binding screw		2
522	CG-522	Ring fastener		1
523	CG-523	Case change gear		1
524	CG-524	Washer		1
525	CG-525	Hex socket head screw DIN 912	M6×10	1

6.11 Wiring Diagram BD-11 (230V)



6.11 Spare parts list BD-11G (230V)

Pos.	Designation	Model	Quantity	Note
SB1	MAGNETIC CONTACTOR	KJD17GF	1	
SA1	F-O-R SWITCH	ZH-A	1	
KM	CONTACTOR	LC1K0910	1	
TC1	TRANSFORMER	230V/24V/20VA	1	
TC2	TRANSFORMER	230V-24V/20VA	1	Optional
QS1	EMERGENCY STOP	LAY5	1	
SQ1	GEAR GUARD SWITCH	QKS8	1	
SQ2	CHUNK GUARD SWITCH	LXW5-11Q1	1	
SB2	LIGHT SWITCH	KCD1-101	1	Optional
HR	WORK LIGHT	24V	1	Optional
SA2	PUMP SWITCH	LAY5-BE101		Optional
M1	MAIN MOTOR	YLJ90L4-12A	1	
M2	PUMP	DB-12A	1	Optional