

# **J E T**

**GHD-22**

**METALWORKING  
Gear Head Drill Press**

**50000405T**

**400/50/3**

## **PARTS LIST**

**Walter Meier (Tool) AG**

Tämperlistrasse 5  
CH-8117 Fällanden  
Switzerland

Phone +41 44 806 47 48

Fax +41 44 806 47 58

[jetinfo.eu@waltermeier.com](mailto:jetinfo.eu@waltermeier.com)

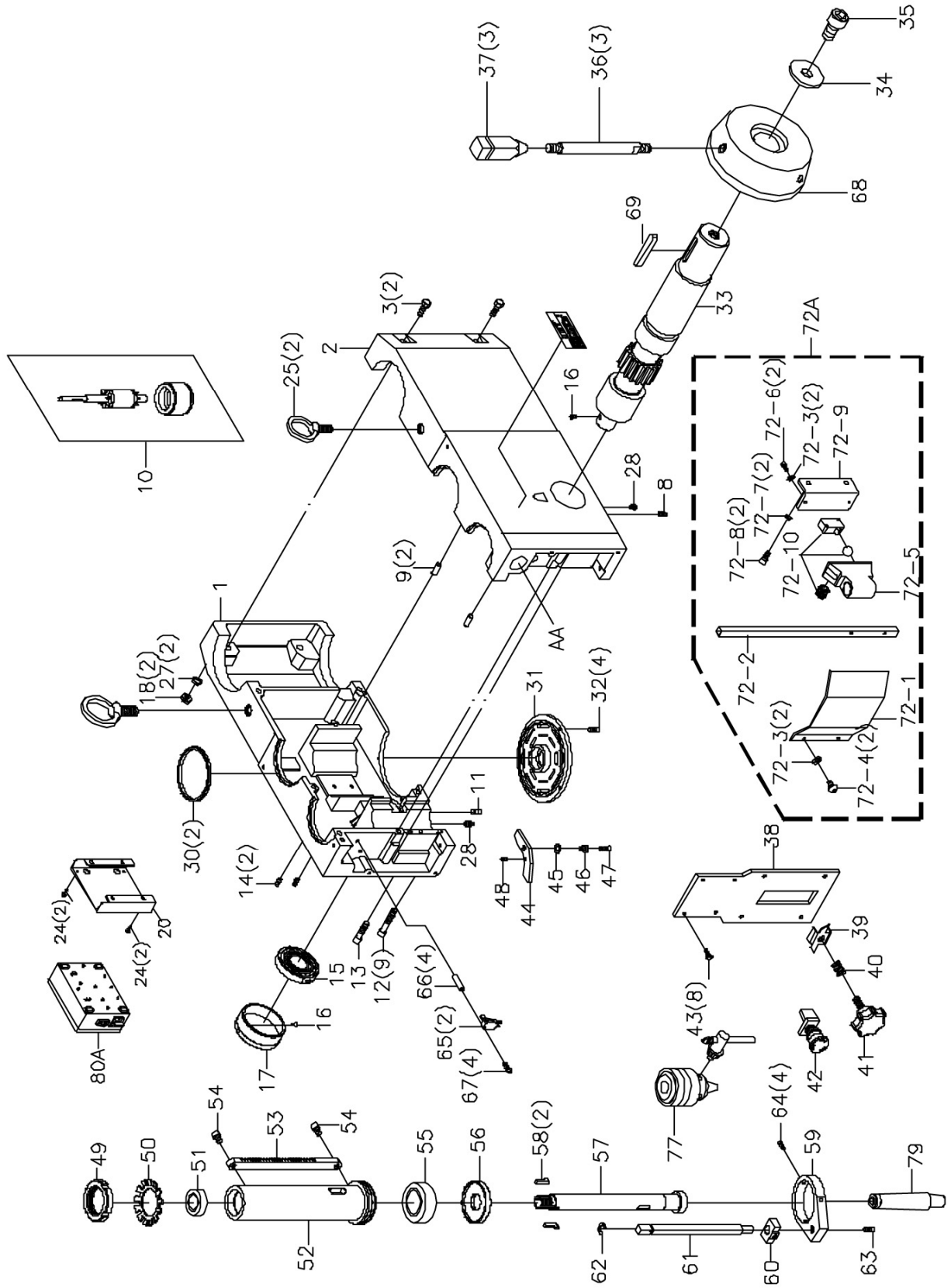
[www.jettools.com](http://www.jettools.com)



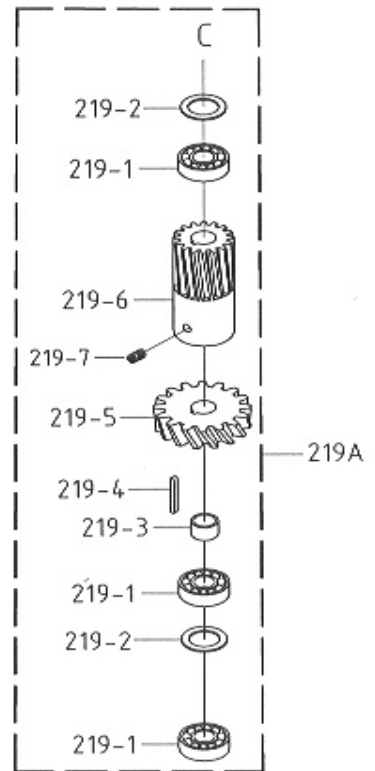
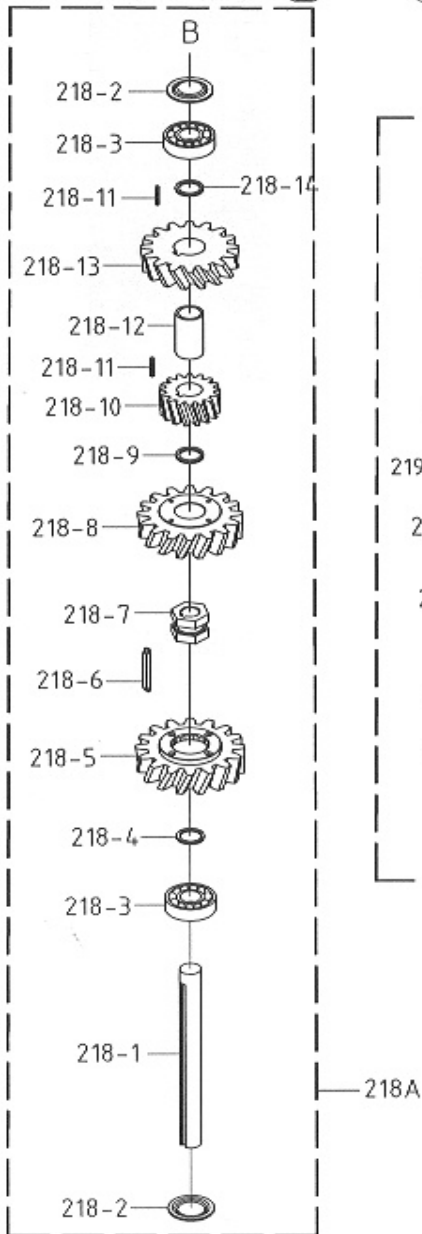
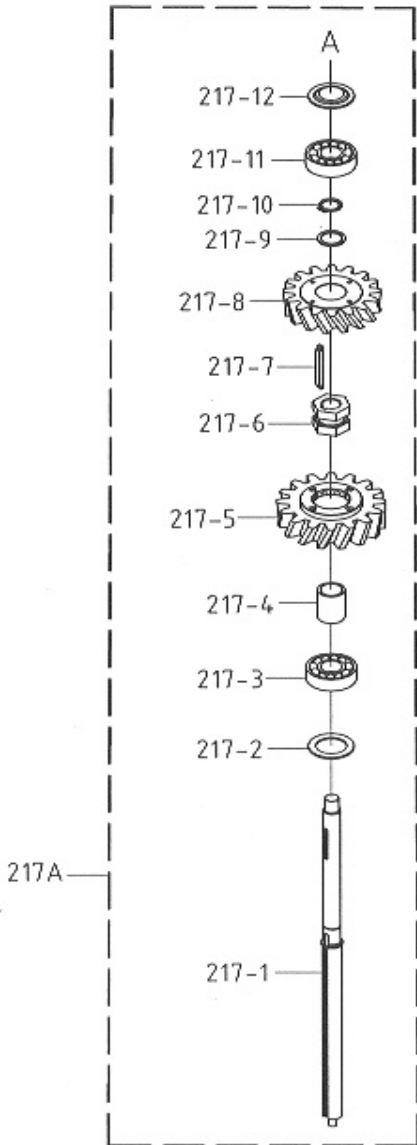
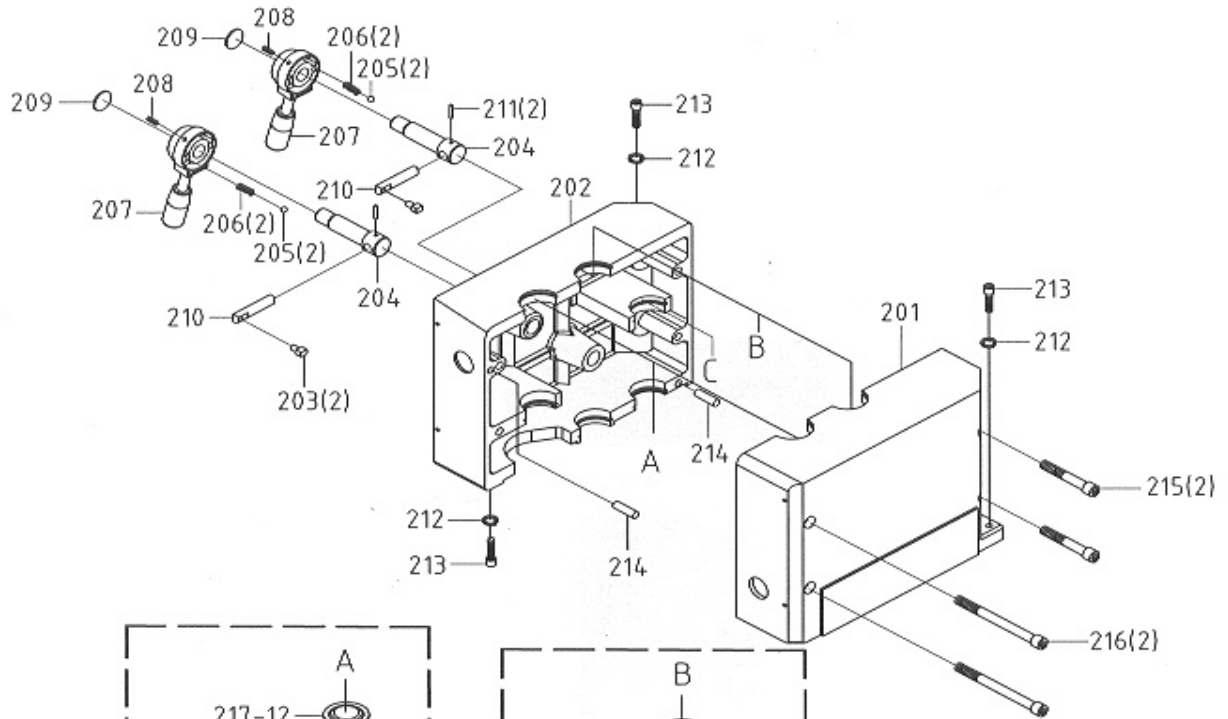
P-50000405T

2010-06-25

# Breakdown for the GHD-22 Transmission Assembly



### Breakdown for the GHD-22 Transmission Assembly



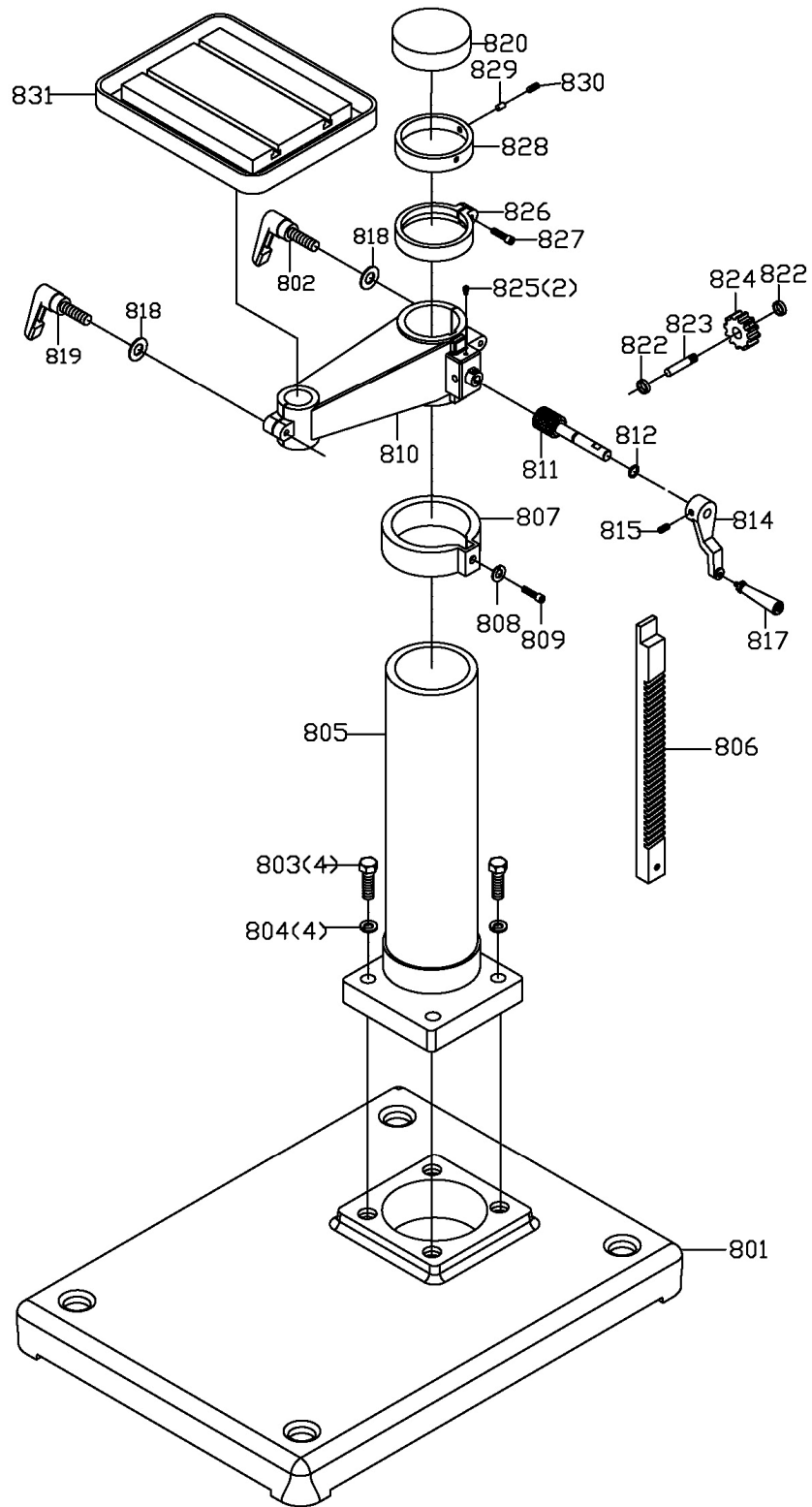
## Parts List for the GHD-22 Transmission & Head Assembly

Index No.	Part No.	Description	Size	Qty.
1	GHD22-01	Head Body (Right)		1
2	GHD22-02	Head Body (Left)		1
3	GHD22-03	Hex. Head Screw	M12x140	2
8	GHD22-08	Hex. Socket Headless Screw	M6x15	1
9	GHD22-09	Pin	ø 8x25	2
10	GHD22-10AE	Motor	1-1/2HP/400V/3PH	1
11	GHD22-11	Hex. Socket Headless Screw	M8x20	1
12	GHD22-12	Hex. Socket Head Screw	M8x90	9
13	GHD22-13	Hex. Socket Head Screw	M8x70	1
14	GHD22-14	Hex. Socket Headless Screw	M6x10	2
15	GHD22-15	Spring		1
16	GHD22-16	Flat Cross Head Screw	M4x5	2
17	GHD22-17	Spring Cover		1
18	GHD22-18	Hex. Nut	M12	2
24	GHD22-24	Cross Round Head Screw	M5x10	4
25	GHD22-25	Retainer Ring		2
27	GHD22-27	Spring Washer	M12	2
28	GHD22-28	Oil Nozzle	PT1/8"	2
30	GHD22-30	Bushing		2
31	GHD22-31	Cover		1
32	GHD22-32	Hex. Socket Head Screw	M5x15	4
33	GHD22-33	Pinion Shaft		1
34	GHD22-34	Washer		1
35	GHD22-35	Hex. Socket Head Screw	M6x25	1
36	GHD22-36	Handle		3
37	GHD22-37	Knob		3
38	GHD22-38	Name Plate		1
39	GHD22-39	Limit Plate		1
40	GHD22-40	Spring		1
41	GHD22-41	Plum Screw		1
42	GHD22-42	Emergent Switch		1
43	GHD22-43	Hex. Socket Head Screw	M4x10	8
44	GHD22-44	Bracket		1
45	GHD22-45	Spring Washer	ø 11x ø 18x1t	1
46	GHD22-46	Fixed Shaft		1
47	GHD22-47	Flat Cross Head Screw	M5x16	1
48	GHD22-48	Steel Ball	M8	1
49	GHD22-49	Nut	M25	1
50	GHD22-50	Washer		1
51	GHD22-51	Bearing	6205ZZ	1
52	GHD22-52	Rack Sleeve	MT3	1
53	GHD22-53	Rack		1
54	GHD22-54	Hex. Socket Head Screw	M8x10	2
55	GHD22-55	Bearing	30206	1
56	GHD22-56	Bushing	MT3	1
57	GHD22-57	Spindle Shaft	MT3	1
58	GHD22-58	Key		2
59	GHD22-59	Feed Base		1
60	GHD22-60	Bracket		1
61	GHD22-61	Depth Gauge Rod		1
62	GHD22-62	E-Retainer Ring		1
63	GHD22-63	Hex. Socket Head Screw	M6x20	1
64	GHD22-64	Hex. Socket Headless Screw	M6x10	4

Index No.	Part No.	Description	Size	Qty.
65	GHD22-65	Limit Switch		2
66	GHD22-66	Bushing		4
67	GHD22-67	Cross Round Head Screw	M3x16	4
68	GHD22-68	Handle Body		1
69	GHD22-69	Key	6x6x30	1
72A	GHD22-72A	Chuck Guard Assembly(# 72-1 to 72-9)		1
72-1	GHD22-72-1	Chuck Guard		1
72-2	GHD22-72-2	Chuck Guard Supporting Rod		1
72-3	GHD22-72-3	Spring Washer	M5	4
72-4	GHD22-72-4	Hex. Socket Head Screw	M5x10	2
72-5	GHD22-75-5	Rotary Supporting Base		1
72-6	GHD22-72-6	Hex. Socket Head Screw	M5x15	2
72-7	GHD22-72-7	Spring Washer	M6	2
72-8	GHD22-72-8	Hex. Socket Head Screw	M6x15	2
72-9	GHD22-72-9	Switch Base		1
72-10	GHD22-72-10	Limit Switch Assembly		1
80A	GHD22-80A	Switch Box Set		1
77	GHD22-77	Keyless Chuck	B-16,16mm	1
79	GHD22-79	Chuck Arbor	MT-3-B16	1
201	GHD22-201	Gear Box		1
202	GHD22-202	Gear Box		1
203	GHD22-203	Change Gear Lever		2
204	GHD22-204	Lever Shaft		2
205	GHD22-205	Steel Ball		4
206	GHD22-206	Spring		4
207	GHD22-207	Speed Lever		2
208	GHD22-208	Screw	M5x12	2
209	GHD22-209	Cover		2
210	GHD22-210	Gear Selector Finger		2
211	GHD22-211	Spring Pin	ø 3x20	2
212	GHD22-212	Spring Washer	M6	3
213	GHD22-213	Hex. Socket Head Screw	M6*1.0-25	3
214	GHD22-214	Pin	ø 8x25	2
215	GHD22-215	Hex. Socket Head Screw	M8x70	2
216	GHD22-216	Hex. Socket Head Screw	M8x90	2
217A	GHD22-217A	Spindle Shaft Assembly(#217-1 to 217-12)		1
217-1	GHD22-217-1	Spindle Shaft		1
217-2	GHD22-217-2	Washer	ø 44x ø 30x2t	1
217-3	GHD22-217-3	Bearing	6203ZZ	1
217-4	GHD22-217-4	Bushing		1
217-5	GHD22-217-5	Gear Set		1
217-6	GHD22-217-6	Speed Change Bracket		1
217-7	GHD22-217-7	Key	5x5*53	1
217-8	GHD22-217-8	Gear Set		1
217-9	GHD22-217-9	Washer	ø 25x ø 18x2t	1
217-10	GHD22-217-10	C-Retainer Ring		1
217-11	GHD22-217-11	Bearing	6302ZZ	1
217-12	GHD22-217-12	Bearing Cap		1
218A	GHD22-218A	Shaft Assembly(#218-1 to 218-14)		1
218-1	GHD22-218-1	Shaft		1
218-2	GHD22-218-2	Bearing Cap		2
218-3	GHD22-218-3	Bearing	6203ZZ	2
218-4	GHD22-218-4	Bushing		1
218-5	GHD22-218-5	Gear Set		1
218-6	GHD22-218-6	Key	5x5L*53	1
218-7	GHD22-218-7	Speed Change Bracket		1

Index No.	Part No.	Description	Size	Qty.
218-8	GHD22-218-8	Gear Set		1
218-9	GHD22-218-9	Bushing		1
218-10	GHD22-218-10	Gear		1
218-11	GHD22-218-11	Key	5x5x20	2
218-12	GHD22-218-12	Bushing		1
218-13	GHD22-218-13	Gear		1
218-14	GHD22-218-14	Bushing		1
219A	GHD22-219A	Gear Assembly(#219-1-219-7)		1
219-1	GHD22-219-1	Bearing	6203ZZ	3
219-2	GHD22-219-2	Washer	ø 44x ø 30x2t	2
219-3	GHD22-219-3	Bushing		1
219-4	GHD22-219-4	Key	5x5x40	1
219-5	GHD22-219-5	Gear		1
219-6	GHD22-219-6	Gear		1
219-7	GHD22-219-7	Hex. Socket Headless Screw	M4x5	1

# Breakdown for the GHD-22 Table, Base, and Column Assembly

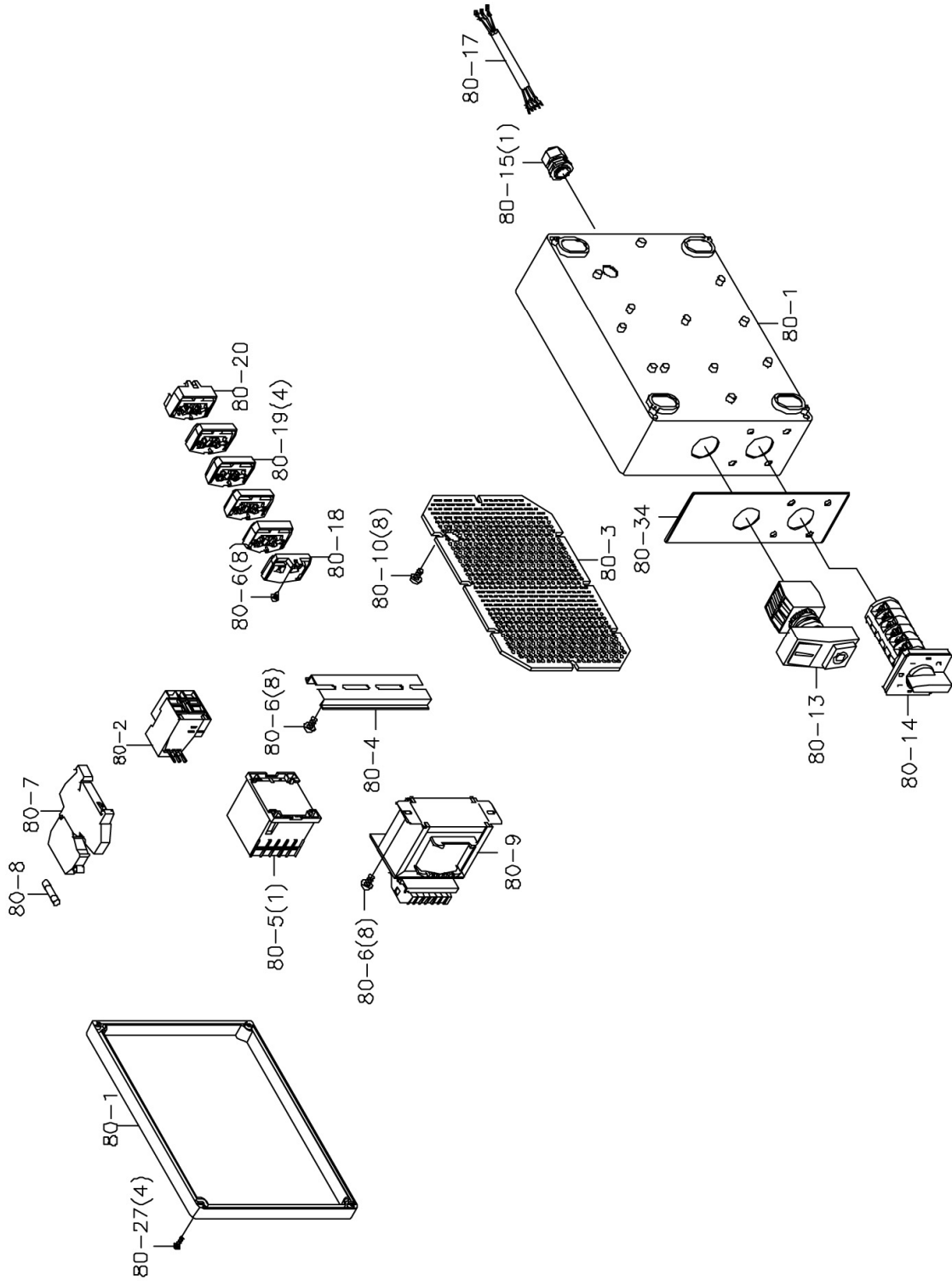


**Parts List for the GHD-22  
Table, Base, and Column Assembly**

<b>Index No.</b>	<b>Part No.</b>	<b>Description</b>	<b>Size</b>	<b>Qty.</b>
801	GHD22-801	Swivel Base		1
802	GHD22-802	Knob	M12x70	1
803	GHD22-803	Hex. Head Screw	M12x50	4
804	GHD22-804	Spring Washer	M12	4
805	GHD22-805	Column		1
806	GHD22-806	Rack		1
807	GHD22-807	Column Flange Ring		1
808	GHD22-808	Spring Washer	M6	1
809	GHD22-809	Hex. Socket Head Screw	M6x15	1
810	GHD22-810	Square Table Base		1
811	GHD22-811	Worm Shaft		1
812	GHD22-812	Bushing		1
814	GHD22-814	Head Handle		1
815	GHD22-815	Hex. Socket Headless Screw	3/8"x1/2"	1
817	GHD22-817	Clamp Handle		1
818	GHD22-818	Washer	M12	2
819	GHD22-819	Knob	M12x50	1
820	GHD22-820	Column Head Assembly		1
822	GHD22-822	Bushing	ø 20x ø 5x5	2
823	GHD22-823	Worm Shaft		1
824	GHD22-824	Gear		1
825	GHD22-825	Oil Nozzle	PT1/8"	2
826	GHD22-826	Bearing Cover		1
827	GHD22-827	Hex. Socket Head Screw	M8x30	1
828	GHD22-828	Head Body Base		1
829	GHD22-829	Washer		2
830	GHD22-830	Hex. Socket Headless Screw	3/8"x1/2"	2
831	GHD22-831	Square Working Table		1



# Breakdown for the GHD-22 Electrical Box Assembly



**Parts List for the GHD-22  
Electrical Box Assembly**

<b>Index No.</b>	<b>Part No.</b>	<b>Description</b>	<b>Size</b>	<b>Qty.</b>
80A	GHD22-80A	Switch Box Set		1
80-1	GHD22-80-1	Switch Box		1
80-2	GHD22-80-2	Overload		1
80-3	GHD22-80-3	Base Plate		1
80-4	GHD22-80-4	Bracket		1
80-5	GHD22-80-5	Contactora		1
80-6	GHD22-80-6	Cross Round Head Screw	M4x10L	8
80-7	GHD22-80-7	Fuse Block		1
80-8	GHD22-80-8	Fuse Wirt		1
80-9	GHD22-80-9	Transformer		1
80-10	GHD22-80-10	Cross Round Head Screw	M5x10L	8
80-13	GHD22-80-13	2 Switch Button		1
80-14	GHD22-80-14	Switch		1
80-15	GHD22-80-15	Cable Setting Nut		1
80-17	GHD22-80-17	Power cable		1
80-18	GHD22-80-18	Terminal Base		1
80-19	GHD22-80-19	Terminal Base		4
80-20	GHD22-80-20	Terminal Base Plate		1
80-27	GHD22-80-27	Cross Round Head Screw	M4x15L	4
80-34	GHD22-80-34	Switch Name Plate		1

**GHD-22  
50000405T**

**400/50/3**

	colour of strands	Litzenfarben	couleur des cordons
BK	black	schwarz	noir
BU	blue	blau	bleu
BN	brown	braun	brun
GNYE	green-yellow	grün-gelb	vert-jaune

	meaning of symbol	Bedeutung der Zeichen	interprétation
F	fuse	Sicherung	fusible
M	main motor	Hauptmotor	moteur principal
JUMP1	emergency stop	Not-Aus Schalter	arrêt d'urgence
JUMP2	Blade Cover	Räderdeckel	couvercle du ruban
SB1	off switch	Aus-Schalter	bouton arrêt
SB2	start switch	Ein-Schalter	bouton marche
SA1	2/4P switch	Schalter 2/4 polig	bouton 2/4 pole
KM1	contactor (motor)	Hauptschütz	contacteur principale
TR	transformer	Transformator	transformateur
FR	Overload	Überlastschutz	interrupteur surcharge

