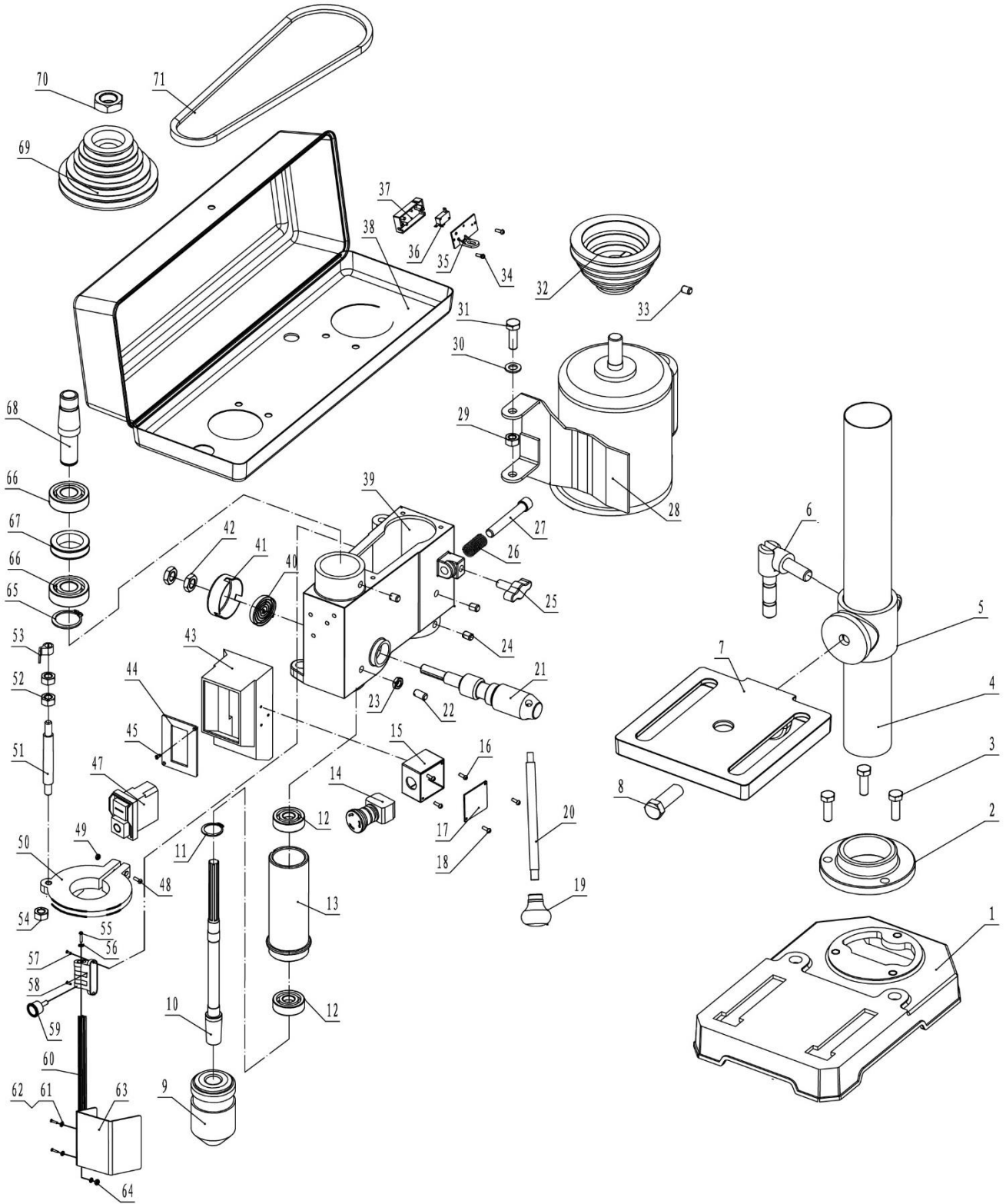


JDP-8BM Assembly Breakdown



JDP-8BM Parts List for Breakdown (1/2)

| Index No. | Part No. | Description | Size | Qty. |
|-----------|------------|-------------------------------|------------|------|
| 1 | JDP8BM-001 | Base | | 1 |
| 2 | JDP8BM-002 | Column support | | 1 |
| 3 | JDP8BM-003 | Hex Cap Screw | M8x20 | 3 |
| 4 | JDP8BM-004 | Column | | 1 |
| 5 | JDP8BM-005 | Support | | 1 |
| 6 | JDP8BM-006 | Lock handle | | 1 |
| 7 | JDP8BM-007 | Table | | 1 |
| 8 | JDP8BM-008 | Hex Cap Screw | | 1 |
| 9 | JDP8BM-009 | Chuck | | 1 |
| 10 | JDP8BM-010 | Spindle | | 1 |
| 11 | JDP8BM-011 | C-Clip | 11 | 1 |
| 12 | BB-6201ZZ | Ball Bearing | 6201ZZ | 2 |
| 13 | JDP8BM-013 | Quill | | 1 |
| 14 | JDP8BM-014 | Emergency Stop Switch | | 1 |
| 15 | JDP8BM-015 | Emergency Stop Switch Box | | 1 |
| 16 | JDP8BM-016 | Cross Pan Head Screw | M4x12 | 3 |
| 17 | JDP8BM-017 | E-Stop Switch Box Cover | | 1 |
| 18 | JDP8BM-018 | Tapping Screw | M3.5x9 | 2 |
| 19 | JDP8BM-019 | Grip | | 3 |
| 20 | JDP8BM-020 | Handle | | 3 |
| 21 | JDP8BM-021 | Handle Seat | | 1 |
| 22 | JDP8BM-022 | Screw | | 1 |
| 23 | JDP8BM-023 | Nut | M8 | 1 |
| 24 | JDP8BM-024 | Hex Socket Cap Screw | M8x8 | 3 |
| 25 | JDP8BM-025 | Locking Button | | 1 |
| 26 | JDP8BM-026 | support spring | | 1 |
| 27 | JDP8BM-027 | Tighting Pin | | 1 |
| 28 | JDP8BM-028 | Motor | | 1 |
| 29 | JDP8BM-029 | Nut-Lock | M8 | 2 |
| 30 | JDP8BM-030 | Washer | 8 | 4 |
| 31 | JDP8BM-031 | Screw-Hex | M8x25 | 2 |
| 32 | JDP8BM-032 | Motor Pulley | | 1 |
| 33 | JDP8BM-033 | Hex Socket Cap Screw | M6x10 | 1 |
| 34 | JDP8BM-034 | Tapping Screw | M3.5x13 | 2 |
| 35 | JDP8BM-035 | Micro Switch Box Cover | | 1 |
| 36 | JDP8BM-036 | Micro Switch | | 1 |
| 37 | JDP8BM-037 | Micro Switch Box | | 1 |
| 38 | JDP8BM-038 | Pulley Cover Assy | | 1 |
| 39 | JDP8BM-039 | Head | | 1 |
| 40 | JDP8BM-040 | Coil Spring | | 1 |
| 41 | JDP8BM-041 | Spring Cap | | 1 |
| 42 | JDP8BM-042 | Nut | 3/8" 24TPI | 2 |
| 43 | JDP8BM-043 | Switch Box | | 1 |
| 44 | JDP8BM-044 | Switch Plate | | 1 |
| 45 | JDP8BM-045 | Cross Pan Head Screw | M5x12 | 4 |
| 47 | JDP8BM-047 | Electromagnetic Switch | | 1 |
| 48 | JDP8BM-048 | Cross Pan Head Screw | M6x25 | 1 |
| 49 | JDP8BM-049 | Nut | M6 | 1 |
| 50 | JDP8BM-050 | Set Ring | | 1 |
| 51 | JDP8BM-051 | Scale Bolt | | 1 |
| 52 | JDP8BM-052 | Nut | M10 | 2 |
| 53 | JDP8BM-053 | Pointer | | 1 |
| 54 | JDP8BM-054 | Nut | M6 | 1 |
| 55 | JDP8BM-055 | Hex Socket Cap Screw | M6x8 | 1 |
| 56 | JDP8BM-056 | Washer | 6 | 1 |
| 57 | JDP8BM-057 | Cross Pan Head Screw | M5x16 | 2 |
| 58 | JDP8BM-058 | Chuck Guard Micro Switch Assy | | 1 |

JDP-8BM Parts List for Breakdown (2/2)

| Index No. | Part No. | Description | Size | Qty. |
|-----------|------------|--------------------------|--------|------|
| 59 | JDP8BM-059 | Shifter Bolt | | 2 |
| 60 | JDP8BM-060 | Chuck Guard Rod | | 1 |
| 61 | JDP8BM-061 | Cross Pan Head Screw | M5x40 | 3 |
| 62 | JDP8BM-062 | Washer | 5 | 4 |
| 63 | JDP8BM-063 | Chuck Guard | | 1 |
| 64 | JDP8BM-064 | Nut | M5 | 1 |
| 65 | JDP8BM-065 | C-Clip | 17 | 1 |
| 66 | BB-6203ZZ | Bearing | 6203ZZ | 2 |
| 67 | JDP8BM-067 | Spacer | | 1 |
| 68 | JDP8BM-068 | Driving Sleeve | | 1 |
| 69 | JDP8BM-069 | Spindle Pulley | | 1 |
| 70 | JDP8BM-070 | Pulley Set nut | | 1 |
| 71 | JDP8BM-071 | V-Belt | | 1 |
| | JDP8BM-072 | Tilt Scale (Not show) | | 1 |
| | JDP8BM-073 | Depth Scale (Not show) | | 1 |
| | JDP8BM-074 | Rivet (Not show) | 2.5x5 | 2 |
| | JDP8BM-075 | Rubber sleeve (Not show) | | 1 |