

JET

JMD-1

Milling Drilling Center

50000020M...230V/50-60Hz/1

PARTS LIST

Walter Meier (Tool) AG

Tämperlistrasse 5

CH-8117 Fällanden

Switzerland

Phone +41 44 806 47 48

Fax +41 44 806 47 58

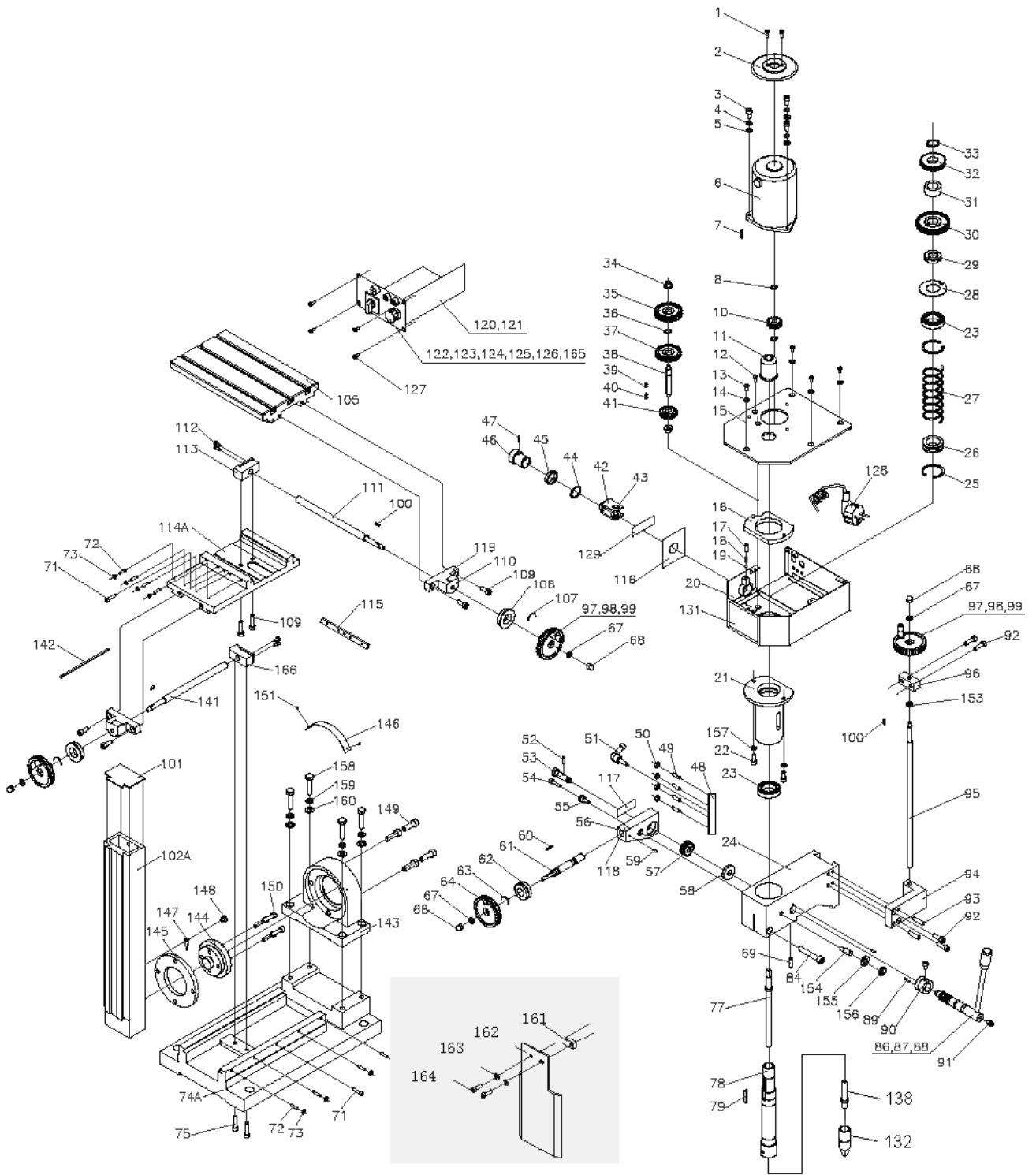
jetinfo.eu@waltermeier.com

www.jetwilton.com



P-50000020M 2010/01/11

Parts Breakdown For JMD-1 Milling Drilling Center



Parts List For JMD-1 Milling Drilling Center

Index No.	Part No.	Description	Size	Q'ty
1	JMD1-001	Screw	M4*12	2
2	JMD1-002	Protect cover for motor		1
3	JMD1-003	Screw	M6*14	3
4	JMD1-004	Spring washer	6	3
5	JMD1-005	Washer	6	3
6	JMD1-006	DC Motor		1
7	JMD1-007	Round key	3*16	1
8	JMD1-008	Check ring for shaft		2
10	JMD1-010	Motor gear		1
11	JMD1-011	Safety cover		1
12	JMD1-012	Screw	M4*6	1
13	JMD1-013	Screw	M4*8	4
14	JMD1-014	Washer	4	4
15	JMD1-015	Up cover		1
16	JMD1-016	Sleeve support plate		1
17	JMD1-017	Screw	M6*5	1
18	JMD1-018	Compression spring		1
19	JMD1-019	Steel ball	5	1
20	JMD1-020	Gear-box		1
21	JMD1-021	Spindle sleeve		1
22	JMD1-022	Screw	M6*14	2
23	JMD1-023	Bearing	61905-2E	2
24	JMD1-024	Spindle box		1
25	JMD1-025	Check ring for hole	38	2
26	JMD1-026	Spring seat ring		1
27	JMD1-027	Compression spring		1
28	JMD1-028	Round nut stop gasket		1
29	JMD1-029	Round nut	M24*1.5	1
30	JMD1-030	Spindle gear		1
31	JMD1-031	Spacer		1
32	JMD1-032	Spindle gear		1
33	JMD1-033	Check ring for shaft	20	1
34	JMD1-034	Power metallurgy gearing		2
35	JMD1-035	Gear		1
36	JMD1-036	Check ring for shaft	10	1
37	JMD1-037	change gear		1
38	JMD1-038	Shift shaft		1
39	JMD1-039	Key	4*8	1
40	JMD1-040	key	4*12	1
41	JMD1-041	Change gear		1
42	JMD1-042	Dial fork		1

Parts List For JMD-1 Milling Drilling Center

Index No.	Part No.	Description	Size	Q'ty
43	JMD1-043	Flange lining		2
44	JMD1-044	Check ring	20	1
45	JMD1-045	Spacer		1
46	JMD1-046	H/L change knob		1
47	JMD1-047	Spring pin	2*12	1
48	JMD1-048	Wedge		1
49	JMD1-049	Screw	M5*18	4
50	JMD1-050	Nut	M5	4
51	JMD1-051	Handle		1
52	JMD1-052	Pin	3*12	1
53	JMD1-053	Joint shaft		1
54	JMD1-054	Screw	M5*18	1
55	JMD1-055	joint screw		1
56	JMD1-056	Worm base		1
57	JMD1-057	Helical gear		1
58	JMD1-058	Spacer		1
59	JMD1-059	Pin	3*18	1
60	JMD1-060	Key	2*18	1
61	JMD1-061	Worm shaft		1
62	JMD1-062	Dial		1
63	JMD1-063	Damp spring		1
64	JMD1-064	Handle wheel		1
67	JMD1-067	Washer	6	4
68	JMD1-068	Top nut	M6	4
69	JMD1-069	Screw	M6*20	1
71	JMD1-071	Screw	M4*20	2
72	JMD1-072	Screw	M4*18	8
73	JMD1-073	Nut	M4	8
74	JMD1-074			
75	JMD1-075	screw	M6*20	2
77	JMD1-077	Lock screw		1
78	JMD1-078	Spindle		1
79	JMD1-079	Key	4*28	1
84	JMD1-084	Screw	M8*50	1
86	JMD1-086	Gear shaft		1
87	JMD1-087	Handle shaft		1
88	JMD1-088	Long handle sleeve		1
89	JMD1-089	Spring pin	3*12	2
90	JMD1-090	Mark show sleeve		1

Parts List For JMD-1 Milling Drilling Center

Index No.	Part No.	Description	Size	Q'ty
91	JMD1-091	Screw	M5*8	2
92	JMD1-092	Screw	M6*20	4
93	JMD1-093	Screw	6*26	2
94	JMD1-094	Nut block		1
95	JMD1-095	Lifting screw		1
96	JMD1-096	Screw Support		1
97	JMD1-097	Handle wheel		3
98	JMD1-098	Handle bolt		3
99	JMD1-099	Handle sleeve		3
100	JMD1-100	Key	3*10	3
101	JMD1-101	Cover board		1
102A	JMD1-102	Fuselage		1
105	JMD1-105	Worktable		1
107	JMD1-107	Damp spring		2
108	JMD1-108	Dial		2
109	JMD1-109	Screw	M6*20	4
110	JMD1-110	Screw base		2
111	JMD1-111	Lengthways screw		1
112	JMD1-112	Screw	M4*8	4
113	JMD1-113	Lengthways nut		1
114A	JMD1-114	Big saddle		1
115	JMD1-115	Wedge		1
116	JMD1-116	Change speed label		1
117	JMD1-117	Joint label		1
118	JMD1-118	o position label		2
119	JMD1-119	Dial label		1
120	JMD1-120	Electricity box (box only)		1
	JMD1-120EMI	EMI-filter		1
121	JMD1-121A	PC Board (S/N:08xxxx & Higher)		1
	JMD1-121	PC Board (S/N:07xxxx & Lower.)		1
122	JMD1-122	Power light		1
123	JMD1-123	Fuse box		1
	JMD1-123F	Fuse	5x25mm, 1A	1
124	JMD1-124	Variable resistor switch		1
125	JMD1-125	Forward/reverse switch		1
126	JMD1-126	Electricity label		1
127	JMD1-127	Screw	ST2.9*6	4
128	JMD1-128	Power line		1
129	JMD1-129	Caution label		1
131	JMD1-131	Main label		1
132	JMD1-132	Keyless Chuck 1-10mm	B12	1
138	JMD1-138	Taper shank MT2/ B12		1

Parts List For JMD-1 Milling Drilling Center

Index No.	Part No.	Description	Size	Q'ty
141	JMD1-141			
142	JMD1-142	Wedge		1
143	JMD1-143	Connect plate support		1
144	JMD1-144	Connect flange		1
145	JMD1-145	round clamp plate		1
146	JMD1-146	Scale		1
147	JMD1-147	Finger		1
148	JMD1-148	Screw	M6*6	1
149	JMD1-149	Screw	M8*25	4
150	JMD1-150	Screw	M6*25	4
151	JMD1-151	Label rivet	M2*3	2
153	JMD1-153	Spacer		1
154	JMD1-154	Adjust screw		1
155	JMD1-155	Washer	10	1
156	JMD1-156	Nut	M10	1
157	JMD1-157	Washer	M6	2
158	JMD1-158	Bolt	M8*30	4
159	JMD1-159	Spring washer	8	4
160	JMD1-160	Washer	8	4
161	JMD1-161	Block up		1
162	JMD1-162	Guard		1
163	JMD1-163	Washer	4	2
164	JMD1-164	Screw	M4*14	2
165	JMD1-165	Yellow lamp		1
166	JMT1-166	Cross lamp		1

JMD-1....5000020M

230V/ 50-60Hz/ 1

