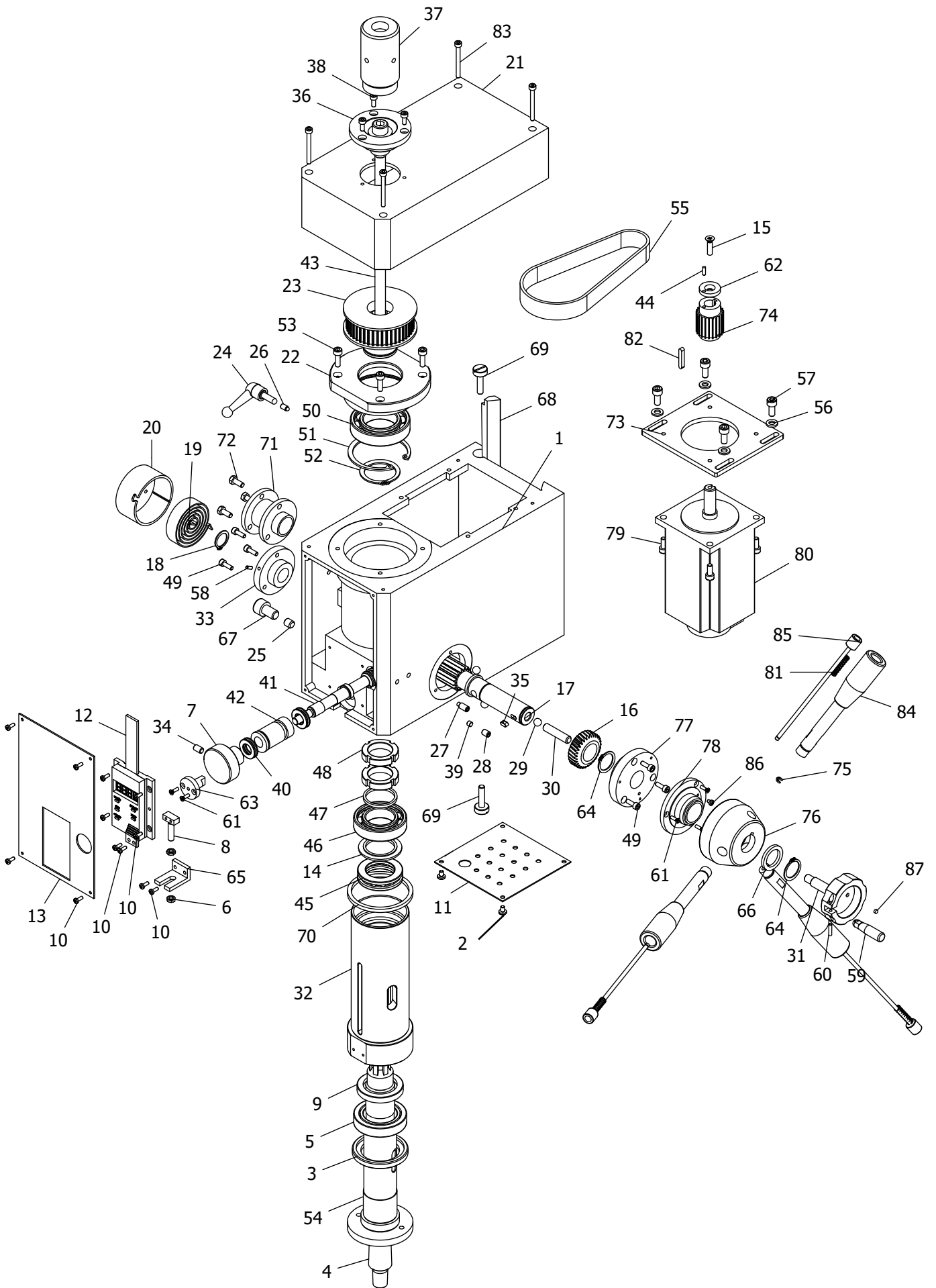


# Parts Breakdown For JMD-X2S Milling Drilling Center (I)



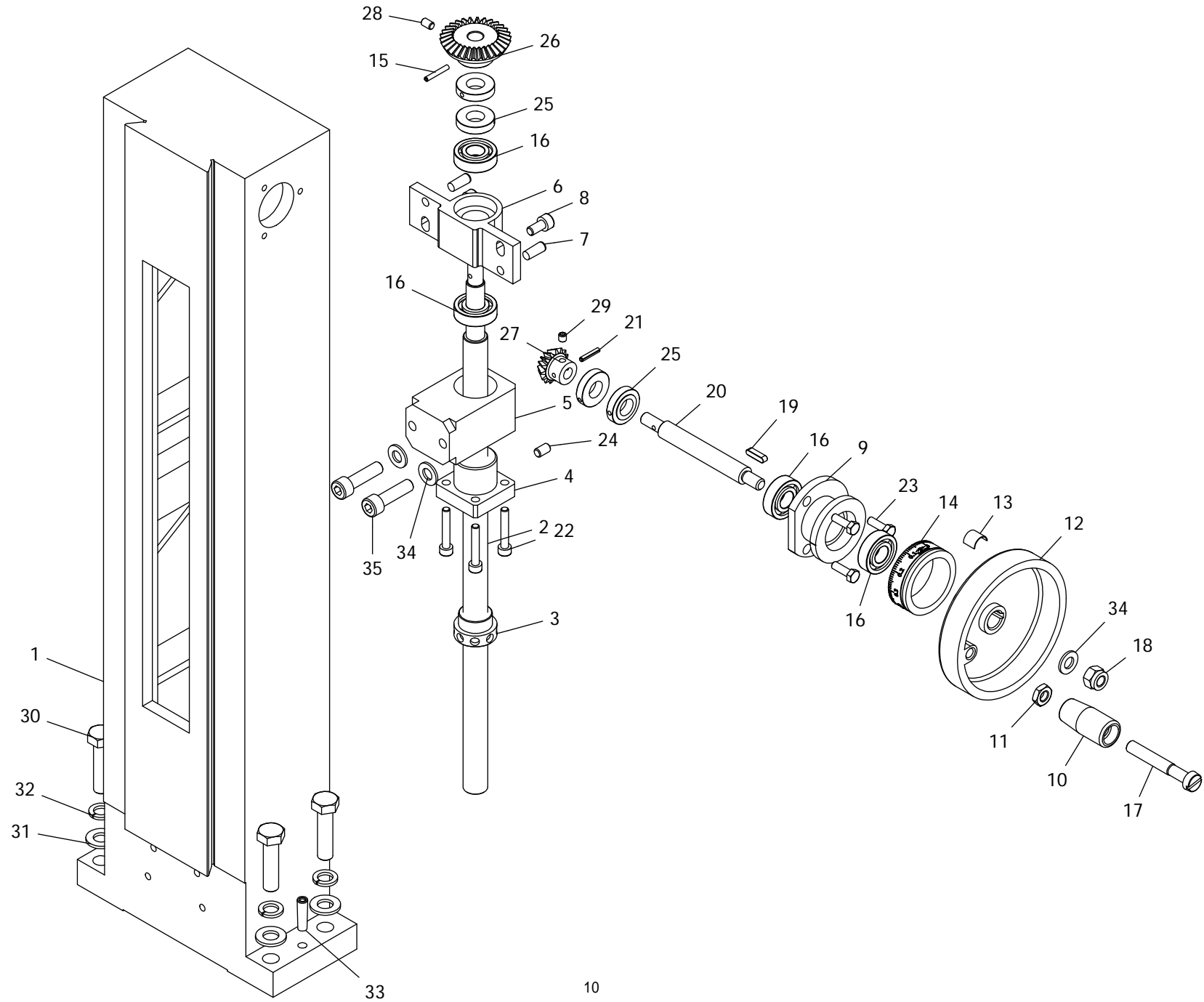
**Part List for JMD-X2S Milling Drilling Center**

<b>No.</b>	<b>Part no.</b>	<b>Description</b>	<b>Size</b>	<b>Qty.</b>
1	JMDX2S-I-01	Spindle box		1
2	JMDX2S-I-02	Cross recessed small pan head screw H type	M4X6	2
3	JMDX2S-I-03	Spindle below oil seal ring I		1
4	JMDX2S-I-04	B16 taper shank		1
5	JMDX2S-I-05	Cone roller bearing	32907	1
6	JMDX2S-I-06	Hexagon headed nut	M5	2
7	JMDX2S-I-07	Fine feeding handwheel		1
8	JMDX2S-I-08	Display fixed square screw		1
9	JMDX2S-I-09	Spindle sleeve below oil seal ring II		1
10	JMDX2S-I-10	Cross recessed small pan head screw Z type	M3X8	12
11	JMDX2S-I-11	Base plate		1
12	JMDX2S-I-12	The digital display module		1
13	JMDX2S-I-13	Panel		1
14	JMDX2S-I-14	Up washer II		1
15	JMDX2S-I-15	Cross recessed counter head screws	M5X20	1
16	JMDX2S-I-16	Bevel gear		1
17	JMDX2S-I-17	Gear shaft		1
18	JMDX2S-I-18	Check ring 16		1
19	JMDX2S-I-19	Clock spring		1
20	JMDX2S-I-20	Clock spring cover		1
21	JMDX2S-I-21	Spindle box cover		1
22	JMDX2S-I-22	Bear seat		1
23	JMDX2S-I-23	Spindle timing belt		1
24	JMDX2S-I-24	Small handle assembly		1
25	JMDX2S-I-25	Spindle sleeve locking shaft		1
26	JMDX2S-I-26	Tighten the top rod		1
27	JMDX2S-I-27	Slotted headless set screws	M6X14	1
28	JMDX2S-I-28	Inner six angle locking screws flat head	M6X8	1
29	JMDX2S-I-29	Ball	8	3
30	JMDX2S-I-30	Locking small shaft		1
31	JMDX2S-I-31	Worm locking handle		1
32	JMDX2S-I-32	Spindle sleeve		1
33	JMDX2S-I-33	Sshaft gear left support flange		1
34	JMDX2S-I-34	Inner six angle locking screw flat head	M6X10	1
35	JMDX2S-I-35	Pin	4X8	1
36	JMDX2S-I-36	Spindle up dust guard I		1
37	JMDX2S-I-37	Spindle up dust guard II		1
38	JMDX2S-I-38	Hexagon socket head cap screw	M4X10	3
39	JMDX2S-I-39	Eccentric sleeve locking block		1
40	JMDX2S-I-40	Thrust ball bearing single		2
41	JMDX2S-I-41	Worm shaft		1
42	JMDX2S-I-42	Worm eccentric sleeve		1
43	JMDX2S-I-43	Locking bolt assembly		1

**Part List for JMD-X2S Milling Drilling Center**

<b>No.</b>	<b>Part no.</b>	<b>Description</b>	<b>Size</b>	<b>Qty.</b>
44	JMDX2S-I-44	Round pin	A3X10	1
45	JMDX2S-I-45	Thrust ball bearing	8106	1
46	JMDX2S-I-46	Deep groove ball bearing	80106	1
47	JMDX2S-I-47	Up washer		1
48	JMDX2S-I-48	Slotted round nut		2
49	JMDX2S-I-49	Hexagon socket head cap screw	M4X12	6
50	JMDX2S-I-50	Deep groove ball bearing 80107	80107	1
51	JMDX2S-I-51	Check ring 62	62	1
52	JMDX2S-I-52	Check ring 35	35	1
53	JMDX2S-I-53	Hexagon socket head cap screw M5*16	M5X16	4
54	JMDX2S-I-54	Spindle		1
55	JMDX2S-I-55	Timing belt Z77		1
56	JMDX2S-I-56	Washer 6	6	4
57	JMDX2S-I-57	Hexagon socket head cap screw	M6X14	4
58	JMDX2S-I-58	Spring round pin	3X8	2
59	JMDX2S-I-59	Assist small handle		1
60	JMDX2S-I-60	Round pin	A3X14	1
61	JMDX2S-I-61	Cross recessed counter head screws H type	M3X10	5
62	JMDX2S-I-62	Washer		1
63	JMDX2S-I-63	Spindle sleeve position shaft		1
64	JMDX2S-I-64	Check ring	20	2
65	JMDX2S-I-65	Display fixed bracket		1
66	JMDX2S-I-66	Round gear shaft adjust washer		1
67	JMDX2S-I-67	Hexagon socket head cap screw	M10X16	1
68	JMDX2S-I-68	Bevel wedge		1
69	JMDX2S-I-69	Wedge screw		2
70	JMDX2S-I-70	Sleeve limited washer		1
71	JMDX2S-I-71	Attachment bracket		1
72	JMDX2S-I-72	Hexagon headed bolt	M5X12	3
73	JMDX2S-I-73	Motor support plate		1
74	JMDX2S-I-74	Motor timing pulley		1
75	JMDX2S-I-75	Spring washer	3	3
76	JMDX2S-I-76	Handle seat		1
77	JMDX2S-I-77	Shaft gear right support flange		1
78	JMDX2S-I-78	Conducting ring assembly		1
79	JMDX2S-I-79	Hexagon socket head cap screw	M5X12	4
80	JMDX2S-I-80	motor		1
81	JMDX2S-I-81	Compress spring	0.8X6X25	3
82	JMDX2S-I-82	Parallet key	4X25	1
83	JMDX2S-I-83	Hexagon socket head cap screw	M4X40	4
84	JMDX2S-I-84	Ccontrol pole assembly		3
85	JMDX2S-I-85	F/R control pole assembly		3
86	JMDX2S-I-86	Cross recessed small pan head screw Z type	M3X4	1
87	JMDX2S-I-87	Magnet	Ø4x2	1

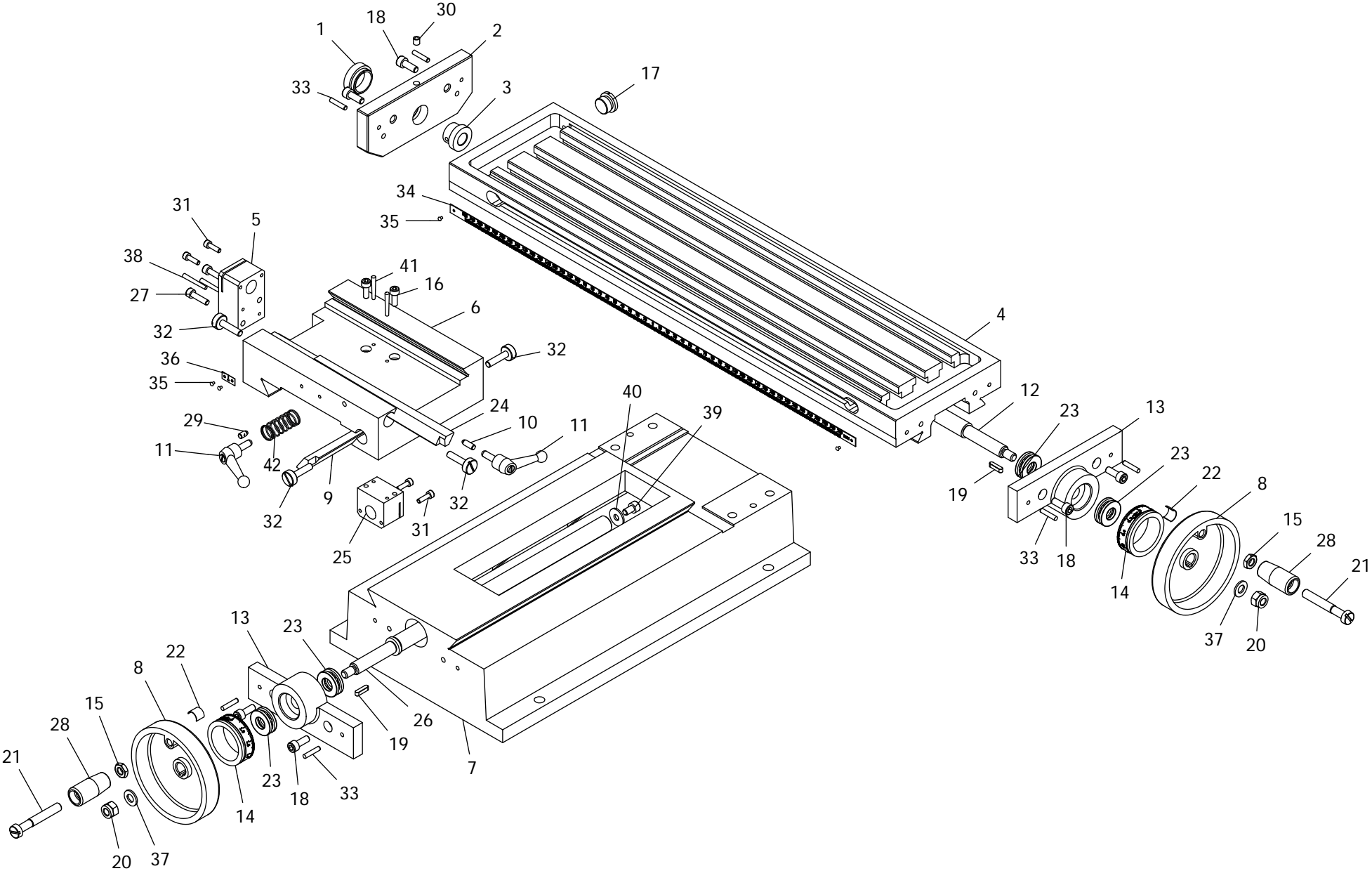
# Parts Breakdown For JMD-2S Milling Drilling Center (II)



### Part List for JMD-X2S Milling Drilling Center

No.	Part no.	Description	Size	Qty.
1	JMDX2S-II-01	Column		1
2	JMDX2S-II-02	Metric rise and down leadscrew		1
3	JMDX2S-II-03	Metric rise and down locking nut		1
4	JMDX2S-II-04	Metric rise and down leadscrew nut		1
5	JMDX2S-II-05	Column nut support		1
6	JMDX2S-II-06	Leadscrew support		1
7	JMDX2S-II-07	Taper pins with internal thread	6X16	2
8	JMDX2S-II-08	Hexagon socket head cap screw	M6X12	2
9	JMDX2S-II-09	Rise and down support seat		1
10	JMDX2S-II-10	Handle		1
11	JMDX2S-II-11	Hex nut	M8	1
12	JMDX2S-II-12	Handle wheel		1
13	JMDX2S-II-13	Spring piece		1
14	JMDX2S-II-14	Metric rise and down scale dial		1
15	JMDX2S-II-15	Spring round pin	3X20	1
16	JMDX2S-II-16	Deep groove ball bearing	6001	4
17	JMDX2S-II-17	Slotted large cheese head screws	85X55	1
18	JMDX2S-II-18	Hex locking nut	M8	1
19	JMDX2S-II-19	Parallet key	4X16	1
20	JMDX2S-II-20	Rise and down shaft		1
21	JMDX2S-II-21	Spring round pin	3X16	1
22	JMDX2S-II-22	Hexagon socket head cap screw	M5X30	4
23	JMDX2S-II-23	Hexagon headed bolt	M5X16	3
24	JMDX2S-II-24	Inner six angle locking screws-flast end	M6X10	1
25	JMDX2S-II-25	Locking nut		4
26	JMDX2S-II-26	Big bevel gear wheel		1
27	JMDX2S-II-27	Small bevel gear wheel		1
28	JMDX2S-II-28	Inner six angle locking screws-cone end	M5X8	1
29	JMDX2S-II-29	Inner six angle locking screws-cone end	M5X5	1
30	JMDX2S-II-30	Hexagon headed bolt	M10X40	4
31	JMDX2S-II-31	Washer	10	4
32	JMDX2S-II-32	Spring washer	10	4
33	JMDX2S-II-33	Taper pins with internal thread	6X24	2
34	JMDX2S-II-34	Washer	8	1
35	JMDX2S-II-35	Hexagon socket head cap screw	M8X30	2

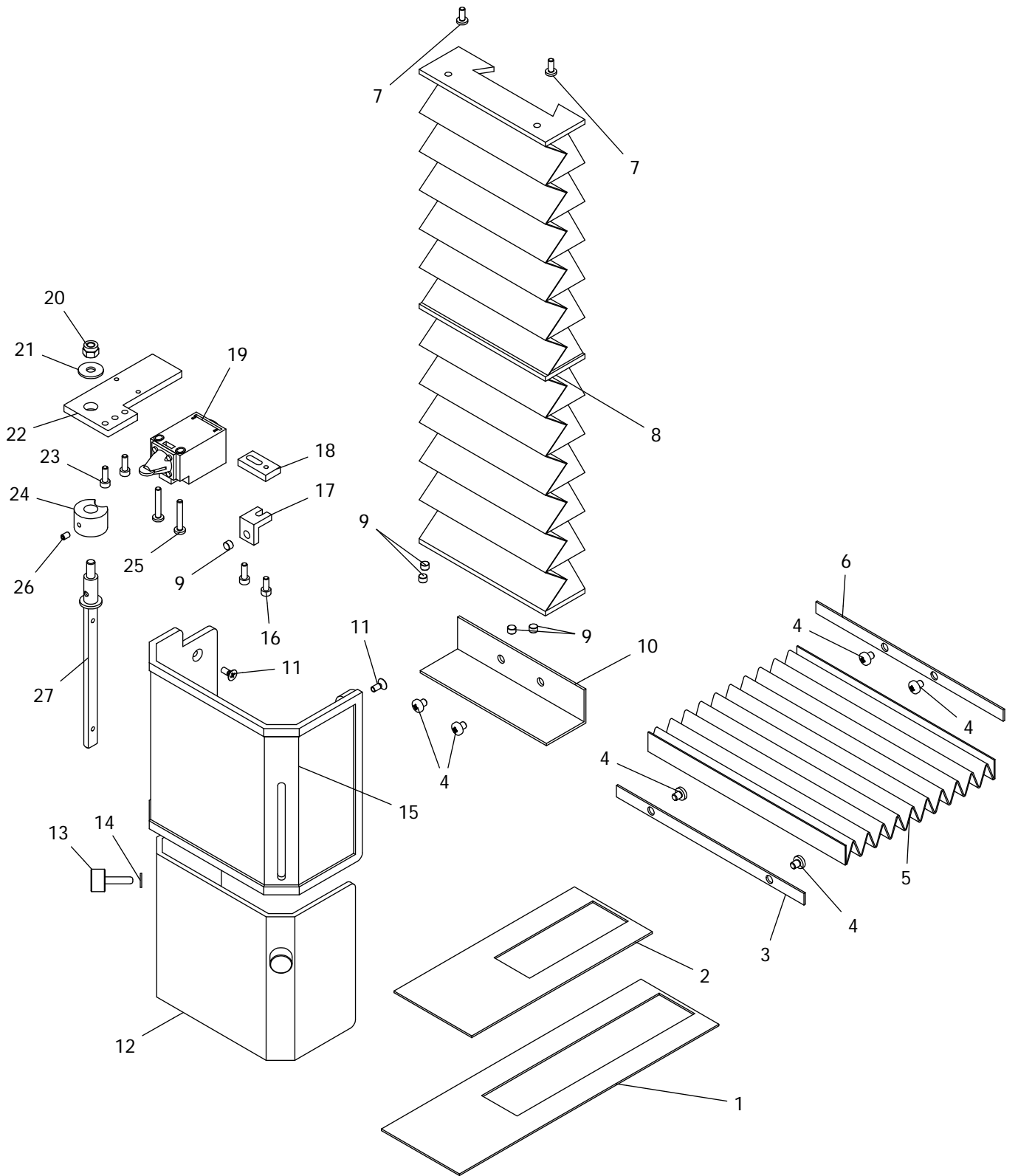
# Parts Breakdown For JMD-2S Milling Drilling Center (III)



**Part List for JMD-X2S Milling Drilling Center**

<b>No.</b>	<b>Part no.</b>	<b>Description</b>	<b>Size</b>	<b>Qty.</b>
1	JMDX2S-III-01	The left bracket cover		1
2	JMDX2S-III-02	Left cover		1
3	JMDX2S-III-03	Longitudinal leadscrew rod bracket left sleeve		1
4	JMDX2S-III-04	Work table		1
5	JMDX2S-III-05	Metric longitudinal leadscrew nut		1
6	JMDX2S-III-06	Saddle		1
7	JMDX2S-III-07	Base		1
8	JMDX2S-III-08	Handwheel		2
9	JMDX2S-III-09	Cross bevel wedge		1
10	JMDX2S-III-10	Longitudinal wedge locking crown bar		1
11	JMDX2S-III-11	Small handle assembly		2
12	JMDX2S-III-12	Metric longitudinal leadscrew		1
13	JMDX2S-III-13	Longitudinal/cross leadscrew bearing seat		2
14	JMDX2S-III-14	Metric longitudinal/cross scale dial		2
15	JMDX2S-III-15	Hexagon nut M8	M8	2
16	JMDX2S-III-16	Hexagon socket head cap screw M5*14	M5X14	2
17	JMDX2S-III-17	Plug		1
18	JMDX2S-III-18	Hexagon socket head cap screw M6*16	M6X16	6
19	JMDX2S-III-19	Parallel key 4*16	4X16	2
20	JMDX2S-III-20	Hexagon locking nut M8	M8	2
21	JMDX2S-III-21	Slotted large cheese head screws 85*55	85X55	2
22	JMDX2S-III-22	Spring piece		2
23	JMDX2S-III-23	Thrust ball bearing 8101	8101	4
24	JMDX2S-III-24	Longitudinal bevel wedge		1
25	JMDX2S-III-25	Metric cross leadscrew nut		1
26	JMDX2S-III-26	Metric cross leadscrew		1
27	JMDX2S-III-27	Hexagon socket head cap screw M5*20	M5X20	2
28	JMDX2S-III-28	Handle		2
29	JMDX2S-III-29	Tighten the top rod		1
30	JMDX2S-III-30	Pressure with pressure column oil cup 6	6	1
31	JMDX2S-III-31	Hexagon socket head cap screw M4*14	M4X14	4
32	JMDX2S-III-32	Wedge screw		4
33	JMDX2S-III-33	Round pin A4*20	A4X20	6
34	JMDX2S-III-34	Scale height		1
35	JMDX2S-III-35	Label rivet 2*3	2X3	4
36	JMDX2S-III-36	Zero label		1
37	JMDX2S-III-37	Washer 8	8	2
38	JMDX2S-III-38	Taper pin A3*30	A3X30	2
39	JMDX2S-III-39	Hexagon socket head cap screw M6*10	M6X10	1
40	JMDX2S-III-40	Washer 6	6	1
41	JMDX2S-III-41	Taper pin B3*26	B3X26	2
42	JMDX2S-III-42	Spring		2

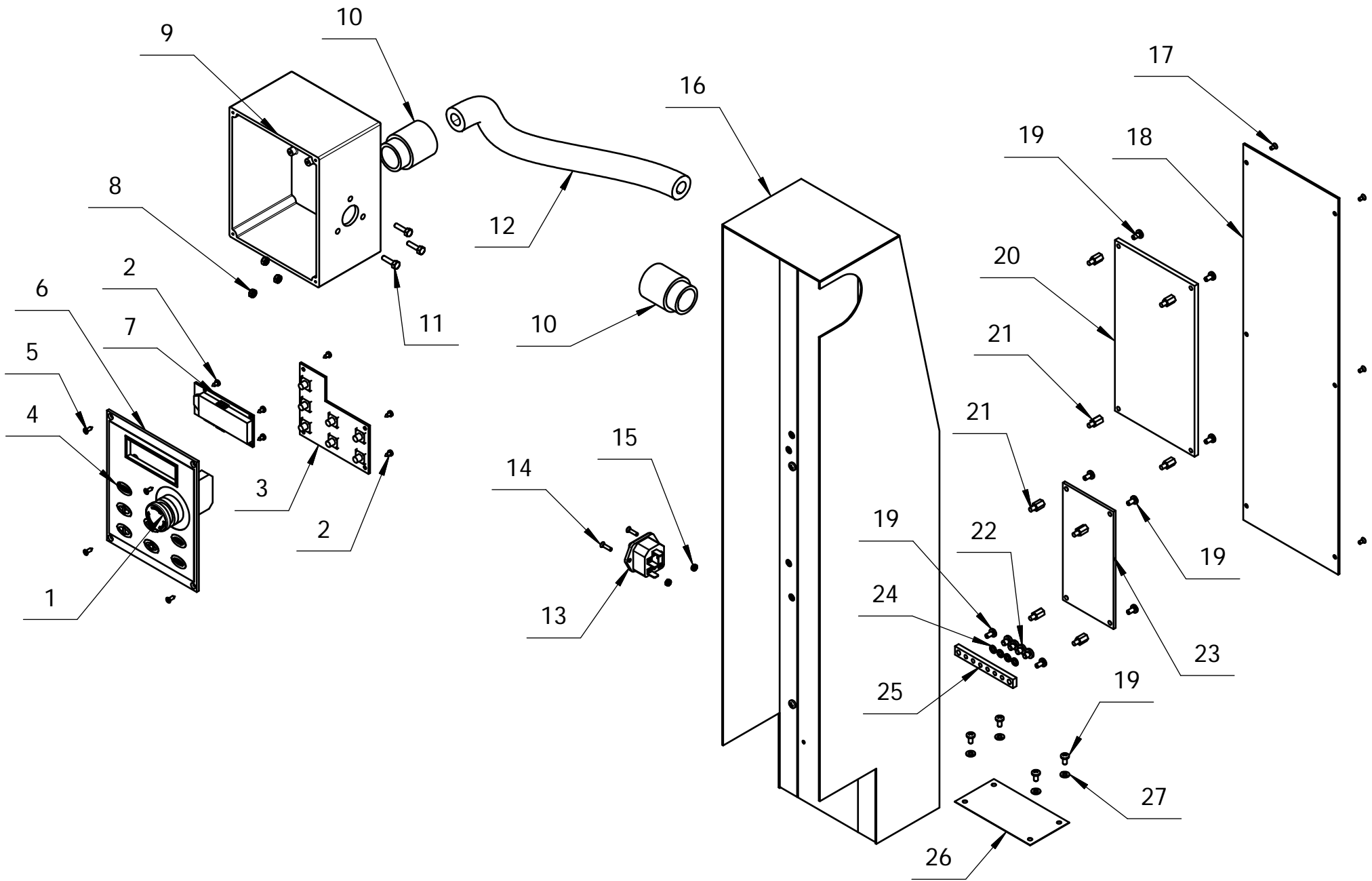
# Parts Breakdown For JMD-2S Milling Drilling Center (IV)





### Part List for JMD-X2S Milling Drilling Center

No.	Part no.	Description	Size	Qty.
1	JMDX2S-IV-01	Splash guard I		1
2	JMDX2S-IV-02	Splash guard II		1
3	JMDX2S-IV-03	Filler strip		1
4	JMDX2S-IV-04	Cross recessed counter head screws	M4X6	6
5	JMDX2S-IV-05	Dust guard		1
6	JMDX2S-IV-06	Dead plate		1
7	JMDX2S-IV-07	Cross recessed counter head screws	M4X10	2
8	JMDX2S-IV-08	Rise and down guideway cover		1
9	JMDX2S-IV-09	Magnet steel	Ø6	5
10	JMDX2S-IV-10	Shield baffle		1
11	JMDX2S-IV-11	Cross recessed counter head screws	M4X10	3
12	JMDX2S-IV-12	The inner shield		1
13	JMDX2S-IV-13	Knurled screws	M5X20	2
14	JMDX2S-IV-14	Washer	5	2
15	JMDX2S-IV-15	Outer protective cover		1
16	JMDX2S-IV-16	Hexagon socket head cap screw	M4X10	1
17	JMDX2S-IV-17	Block		1
18	JMDX2S-IV-18	Connecting plate		1
19	JMDX2S-IV-19	Safety limit switch		1
20	JMDX2S-IV-20	Hexagon locking nut	M6	1
21	JMDX2S-IV-21	Washer 6	6	1
22	JMDX2S-IV-22	Support plate		1
23	JMDX2S-IV-23	Hexagon socket head cap screw	M4X12	3
24	JMDX2S-IV-24	Spacer bush		1
25	JMDX2S-IV-25	Cross recessed counter head screws	M4X25	2
26	JMDX2S-IV-26	Inner six angle locking screw-cone end m	M4X6	1
27	JMDX2S-IV-27	Rotate shaft		1



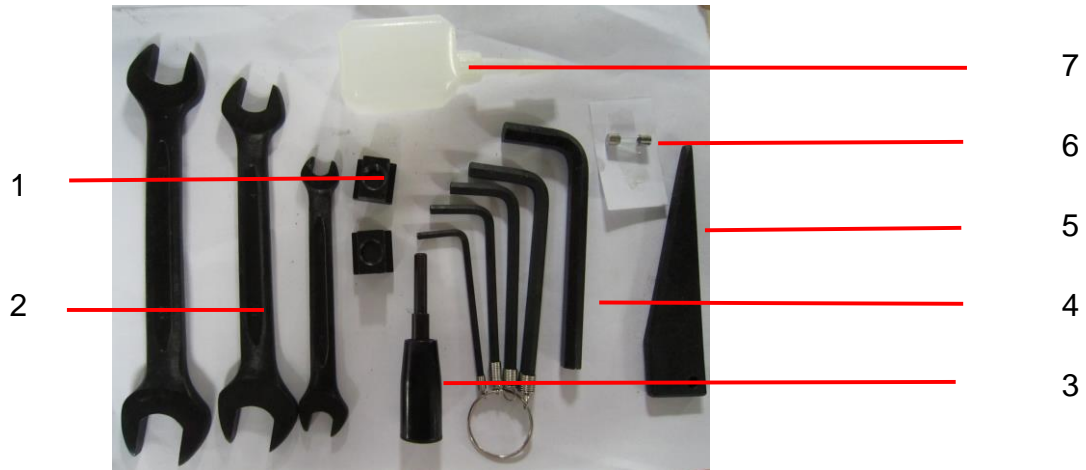
Parts Breakdown For JMD-2S Milling Drilling Center (V)

**Part List for JMD-X2S Milling Drilling Center**

<b>No.</b>	<b>Part no.</b>	<b>Description</b>	<b>Size</b>	<b>Qty.</b>
1	JMDX2S-V-01	Emergency stop		1
2	JMDX2S-V-02	Tapping screw		8
3	JMDX2S-V-03	Touch panel		1
4	JMDX2S-V-04	label		1
5	JMDX2S-V-05	Tapping screw		4
6	JMDX2S-V-06	Electric box cover		1
7	JMDX2S-V-07	Rotate speed display		1
8	JMDX2S-V-08	Hexagon headed nut M4	M4	7
9	JMDX2S-V-09	Electric box		1
10	JMDX2S-V-10	Tube connecter		2
11	JMDX2S-V-11	Hexagon headed bolt M4*16	M4X16	3
12	JMDX2S-V-12	Tube		1
13	JMDX2S-V-13	Power socket		1
14	JMDX2S-V-14	Cross recessed counter head screws M3*12	M3X12	2
15	JMDX2S-V-15	Hexagon headed nut M4	M3	2
16	JMDX2S-V-16	Back cover		1
17	JMDX2S-V-17	Cross recessed counter head screws M3*6	M3X6	6
18	JMDX2S-V-18	Back cover		1
19	JMDX2S-V-19	Cross recessed small pan head screw Z type M4*8	M4X8	14
20	JMDX2S-V-20	PC board		1
21	JMDX2S-V-21	Hex spacer		8
22	JMDX2S-V-22	Cross recessed small pan head screw M5*6	M5X6	4
23	JMDX2S-V-23	Filter		1
24	JMDX2S-V-24	Spring spacer	5	4
25	JMDX2S-V-25	Grounding bar		1
26	JMDX2S-V-26	Blow dust gauze		1
27	JMDX2S-V-27	Washer	4	4

### Accessories Part List for JMD-X2S Milling Drilling Center

No.	Part no.	Descirption	Size	Qty.
1	JMDX2S-ACCS-01	T nut		2
2	JMDX2S-ACCS-02	Double end wrench	S1*S2:8*10,14*17, 17*19	each 1
3	JMDX2S-ACCS-03	L hex wrench assemble		1
4	JMDX2S-ACCS-04	L hex wrench	S:3,4,5,6,8	each 1
5	JMDX2S-ACCS-05	Slanting wedge		1
6	JMDX2S-ACCS-06	Fuse	230V/5A	1
7	JMDX2S-ACCS-07	Oil cup		1



# JMD-X2S.....1~230V,50Hz

