

JET

JSG-64

Disc & belt sander

10000890M.....1~230V, 50Hz

PARTS LIST ERSATZTEILLISTE LISTE DE PIECES

Walter Meier (Tool) AG

Tämperlistrasse 5

CH-8117 Fällanden

Switzerland

Phone +41 44 806 47 48

Fax +41 44 806 47 58

jetinfo.eu@waltermeier.com

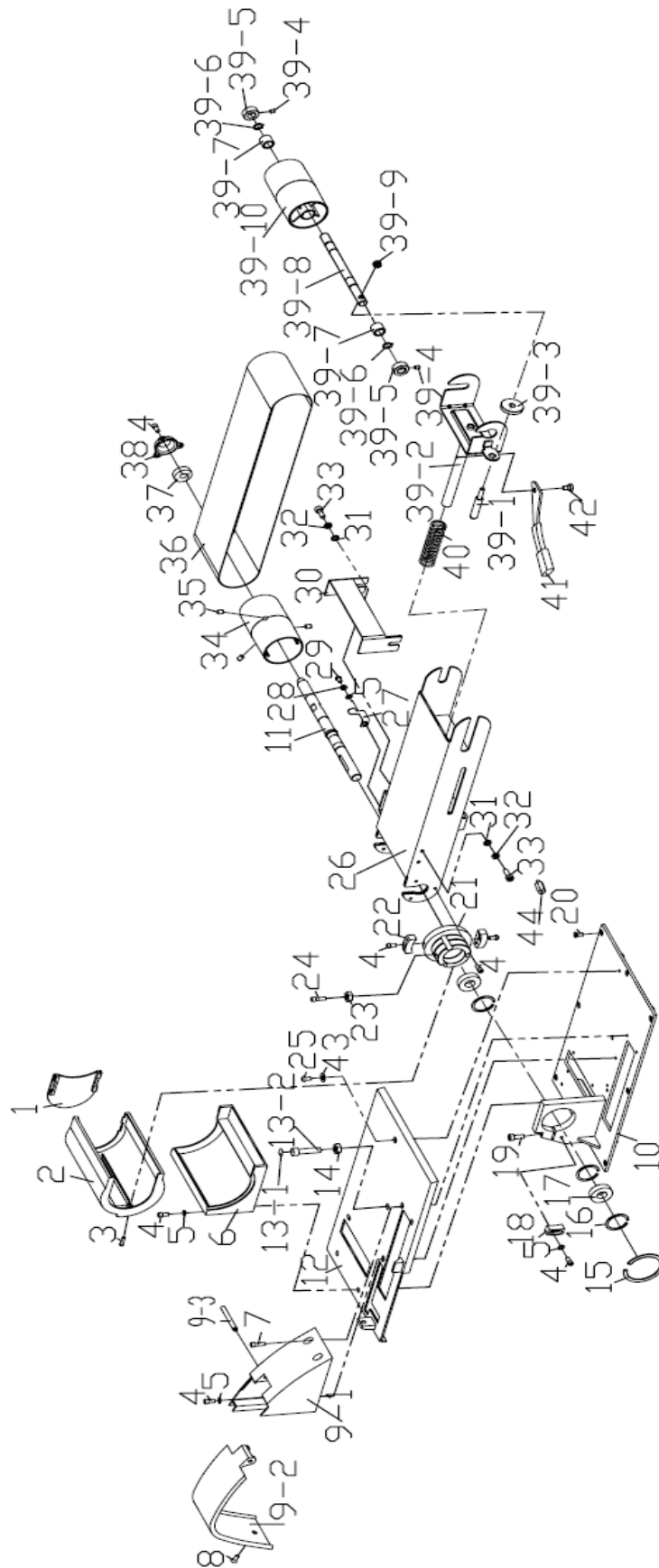
www.jettools.com



MP- 10000890M

2012-11

JSG-64 Disc & belt sander-- Replacement Parts Illustration for Belt Housing—A

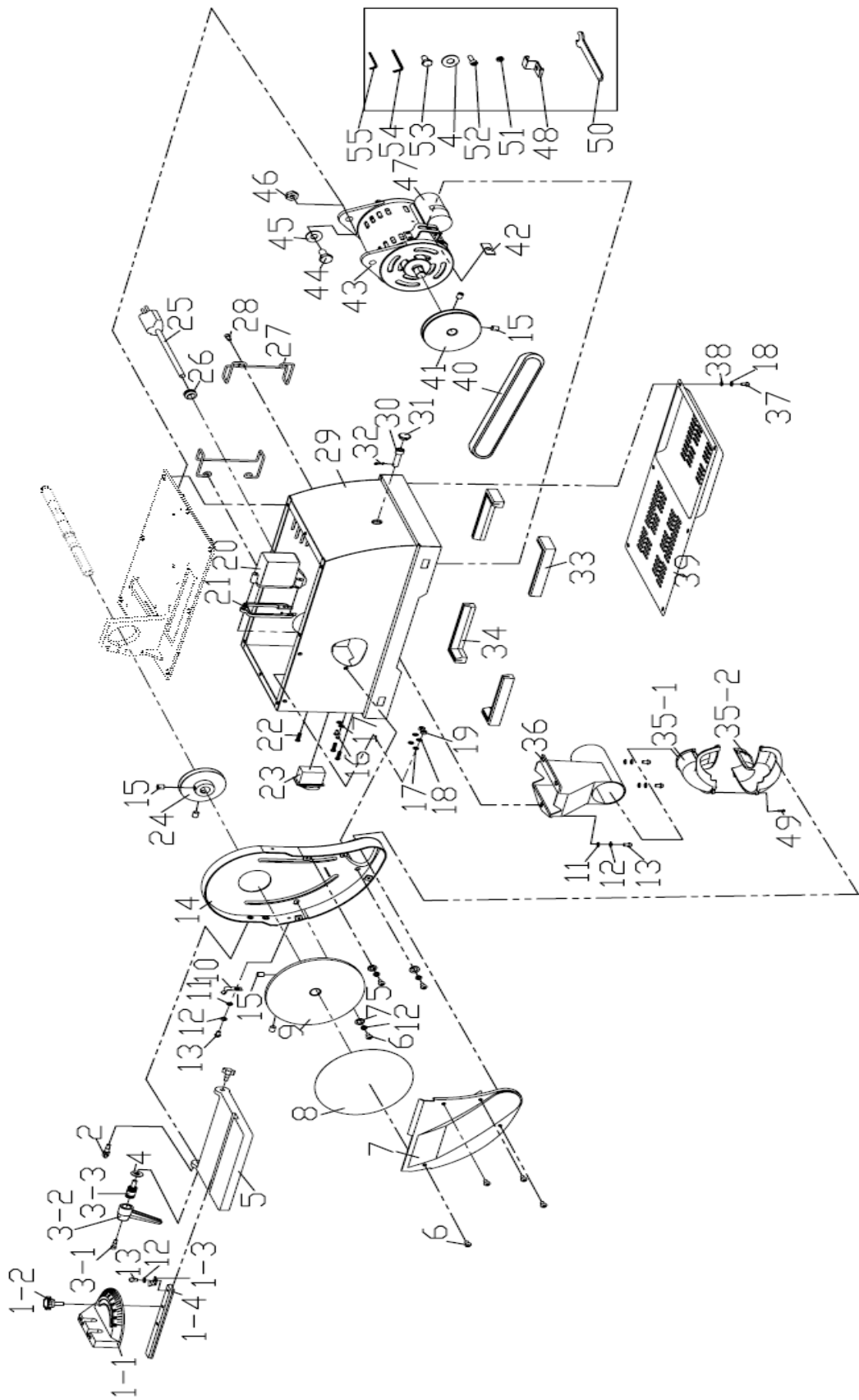


REPLACEMENT PARTS LIST FOR BELT HOUSING--A

Index No.	Part No.	Description	Size	Qty
1	JSG64-A-1	Side Cover		1
2	JSG64-A-2	Dust Deflector		1
3	JSG64-A-3	Bolt	M4x15	1
4	JSG64-A-4	Bolt	M5x10	9
5	JSG64-A-5	Flat Washer	5	5
6	JSG64-A-6	Dust Cover		1
7	JSG64-A-7	Bolt	M5x15	2
8	JSG64-A-8	Bolt	M5x8	1
9-1	JSG64-A-9-1	Protective guard (A)		1
9-2	JSG64-A-9-2	Protective guard (B)		1
9-3	JSG64-A-9-3	Round pin		1
10	JSG64-A-10	Base plate		1
11	JSG64-A-11	Drive Shaft		1
12	JSG64-A-12	Base Cove		1
13-1	JSG64-A-13-1	Shock pad		1
13-2	JSG64-A-13-2	Adjusting bolt		1
14	JSG64-A-14	Nut	M8	1
15	JSG64-A-15	Check ring	50	1
16	JSG64-A-16	Check ring	32	1
17	JSG64-A-17	Bearing	6002	1
18	JSG64-A-18	Slid block		1
19	JSG64-A-19	Bolt	M5x25	1
20	JSG64-A-20	Bolt	M5x12	8
21	JSG64-A-21	Pivot		1
22	JSG64-A-22	Pivot Stop		2
23	JSG64-A-23	Hex. Nut	M6	1
24	JSG64-A-24	Bolt	M5x16	1
25	JSG64-A-4	Bolt	M5x10	1
26	JSG64-A-26	Supporting Plate Assembly		1
27	JSG64-A-27	Pointer		1
28	JSG64-A-28	Spring Washer	5	2
29	JSG64-A-8	Bolt	M5x8	2
30	JSG64-A-30	Back Stop		1
31	JSG64-A-4	Flat Washer	6	2
32	JSG64-A-32	Spring Washer	6	4
33	JSG64-A-33	Bolt	M6x15	2

Index No.	Part No.	Description	Size	Qty
34	JSG64-A-34	Drive Drum		2
35	JSG64-A-35	Bolt	M8x10	3
36	JSG64-A-36	Abrasive Belt	914x100P=80	1
37	JSG64-A-37	Ball Bearing	6000	1
38	JSG64-A-38	Bearing Cover		1
39-1	JSG64-A-39-1	Adjusting Bolt		1
39-2	JSG64-A-39-2	Retaining plate Assembly		1
39-3	JSG64-A-39-3	Adjusting Nut		1
39-4	JSG64-A-39-4	Bolt	M5x6	2
39-5	JSG64-A-39-5	Stop Collar		2
39-6	JSG64-A-39-6	Check Ring	11	2
39-7	JSG64-A-39-7	Oil Bearing		2
39-8	JSG64-A-39-8	Shaft		1
39-9	JSG64-A-23	Check Nut	M6	1
39-10	JSG64-A-39-10	Driven Wheel		1
40	JSG64-A-40	Spring		1
41	JSG64-A-41	Tension Lever		1
42	JSG64-A-42	Bolt-A		1
43	JSG64-A-43	Big Flat Washer		1
44	JSG64-A-44	Bolt-A		1

JSG-64 Disc & belt sander--- - Replacement Parts Illustration for Motor and Disc--B



REPLACEMENT PARTS LIST FOR MOTOR AND DISC--B

Index No.	Part No.	Description	Size	Qty
1-1	JSG64-B-1-1	Miter Gauge Body		1
1-2	JSG64-B-1-2	Knob		1
1-3	JSG64-B-1-3	Pointer		1
1-4	JSG64-B-1-4	Miter Bar		1
2	JSG64-B-2	Knob		2
3-1	JSG64-B-3-1	Locking Handle Screw		1
3-2	JSG64-B-3-2	Handle		1
3-3	JSG64-B-3-3	Locking Handle Bolt		1
4	JSG64-B-4	Flat Washer	6	1
5	JSG64-B-5	Table		1
6	JSG64-B-6	Pan Head Screw	M5x12	7
7	JSG64-B-7	Dust Cover		1
8	JSG64-B-8	Abrasive Disc		1
9	JSG64-B-9	Aluminum Disc		1
10	JSG64-B-10	Pointer		1
11	JSG64-B-11	Flat Washer	5	4
12	JSG64-A-28	Spring Washer	5	5
13	JSG64-B-13	Pan Head Screw	M5x8	2
14	JSG64-B-14	Disc Guard		1
15	JSG64-B-15	Set Screw	M8x10	2
16	JSG64-A-3	Pan Head Screw	M4x15	2
17	JSG64-B-17	Serrated Washer	4	4
18	JSG64-B-18	Lock Washer	4	2
19	JSG64-B-19	Hex Nut	M4	2
20	JSG64-B-20	Switch Box		1
21	JSG64-B-21	Gasket		1
22	JSG64-B-22	Thread Forming Screw	ST3.9x16	3
23	JSG64-B-23	Switch		1
24	JSG64-B-24	Driven Pulley		1
25	JSG64-B-25	Line Cord		1
26	JSG64-B-26	Strain Relief		1
27	JSG64-B-27	Line Cord Hook		2
28	JSG64-A-4	Socket Head Bolt	M5x10	4
29	JSG64-B-28	Body		1
30	JSG64-B-30	Bolt		1
31	JSG64-B-31	Rubber Pad		1

Index No.	Part No.	Description	Size	Qty
32	JSG64-B-17	Split Pin	φ 2.5x14	1
33	JSG64-B-33	Foot - A		2
34	JSG64-B-34	Foot - B		2
35-1	JSG64-B-35-1	Tube -A		1
35-2	JSG64-B-35-2	Tube -B		1
36	JSG64-B-36	Dust Chute		1
37	JSG64-B-17	Pan Head Screw	M4x10	6
38	JSG64-B-38	Lock Washer		6
39	JSG64-B-39	Bottom Plate		1
40	JSG64-B-40	V-Belt	Z-762	1
41	JSG64-B-41	Motor Pulley		1
42	JSG64-B-42	Nut		1
43	JSG64-B-43	Motor		1
44	JSG64-B-44	Hex Head Bolt	M10x25	2
45	JSG64-B-45	Flat Washer	10	2
46	JSG64-B-46	Hex Nut	M10	2
47	JSG64-B-47	Capacitor		1
48	JSG64-B-48	Mounting Bracket		4
49	JSG64-B- 49	Thread Forming Screw	ST2.2x8	4
50	JSG64-B-50	Wrench		1
51	JSG64-B-51	Washer	6	4
52	JSG64-B-52	Socket Head Bolt	M6x16	4
53	JSG64-B-53	Hex Bolt	M6x16	4
54	JSG64-B-54	Allen Wrench	3mm	1
55	JSG64-B-55	Allen Wrench	5mm	1

JSG-64

10000890M

1~230V, 50Hz

Wiring diagram

	colour of strands	Litzenfarben	couleur des cordons
BK	black	schwarz	noir
WH	white	weiß	blanc
BU	blue	blau	bleu
YE	yellow	gelb	jaune
RD	red	rot	rouge
BN	brown	braun	brun
GY	grey	grau	gris
GNYE	green-yellow	grün-gelb	vert-jaune
OG	orange	orange	orange
VT	violet	violett	violet

	meaning of symbol	Bedeutung der Zeichen	interprétation
M	motor	Motor	moteur
C	capacitor	Kondensator	condensateur
S	switch	Schalter	interrupteur
X	plug	Stecker	prise d'alimentation

