

JET

JWBS-24

WOODWORKING BANDSAW

1791260T ...400/50/3

PARTS LIST

Walter Meier (Fertigung) AG
Bahnstrasse 24
8603 Schwerzenbach
Switzerland
Phone +41 44 806 47 48
Fax +41 44 806 47 58
jetinfo.eu@waltermeier.com
www.jettools.com



P-1791260T 2009/08/28

Saw Body Assembly

| Index No. | Part No. | Description | Size | Qty |
|-----------|----------------|---------------------------------|----------------|-----|
| 1 | 2415-101E | Body | | 1 |
| 2 | JWBS24-102AE | Magnetic Switch | | 1 |
| | JWBS24-102CSAE | Contacting Switch (not shown) | | 1 |
| | JWBS24-102ORE | Overload Relay (not shown) | | 1 |
| 3 | JWBS24-103AE | Switch Box | | 1 |
| 4 | TS-069204 | Flat Washer | | 2 |
| 5 | PM2000-298 | Safety Key for Magnetic Switch | | 1 |
| 6 | JWBS24-106E | Transformer | | 1 |
| 7 | JWBS24-107E | Cover Plate | | 1 |
| 8 | JWBS24-108E | Label | | 1 |
| 9 | JWBS18-232E | Dust Chute | | 1 |
| 10 | TS-0680031 | Flat Washer | 5/16 | 2 |
| 11 | TS-0051051 | Hex Cap Screw | 5/16-18x3/4 | 2 |
| 12 | TS-0560071 | Hex Nut | #10-24 | 2 |
| 13 | TS-0561021 | Hex Nut | 5/16-18 | 2 |
| 14 | 6295126 | Brush | | 1 |
| 15 | TS-081C082 | Phillips Pan Head Machine Screw | #10-24x1-1/2 | 2 |
| 16 | 6294804E | Lower Back Door | | 1 |
| 17 | TS-0680021 | Flat Washer | 1/4 | 10 |
| 18 | TS-1503031 | Socket Head Cap Screw | M6-1.0Px12 | 9 |
| 19 | 6294805E | Power Cord | 3Ph | 1 |
| 20 | 6294806 | Lower Blade Wheel | | 2 |
| 21 | 6294807 | Tire | | 2 |
| 22 | 6295134 | Hex Nut | 3/4-16(L.H) | 2 |
| 23 | TS-0680091 | Flat Washer | 3/4 | 2 |
| 24 | 6295061 | Blade | 1"x.026x3 hook | 1 |
| 25 | 6295137 | Door Latch | | 3 |
| 26 | 6295138 | Door Catch | | 3 |
| 27 | 6295139 | Phillips Pan Head Machine Screw | M4x4 | 9 |
| 28 | 2415-128E | Lower Front Door | | 1 |
| 29 | 2415-129E | Upper Front Door | | 1 |
| 30 | JWBS24-130AE | Braking Release Switch | | 1 |
| 31 | JWBS24-131 | Wiring Block | | 1 |
| 32 | 6294810 | Scale | | 1 |
| 33 | 6294811AE | I.D Label | | 1 |
| 35 | JWBS18-140 | Name Plate | | 1 |
| 37 | TS-0720081 | Lock Washer | 5/16 | 1 |
| 38 | 2415-138 | Upper Blade Wheel | | 1 |
| 39 | 6295208 | Ball Bearing | 6205 | 2 |
| 40 | 2013-140 | Retaining Ring | Ø 52 | 2 |
| 41 | JWBS24-141E | Plate | | 1 |
| 42 | JWBS24-142E | Limit Switch Kit | | 3 |
| 43 | JWBS24-143E | Bracket | | 1 |
| 44 | 54A-S39 | Strain Clamp | PG11 | 3 |
| 45 | 54A-S40AE | Strain Clamp | PG13.5 | 2 |
| 46 | JWBS24-146E | Swivel Plate | | 1 |
| 47 | TS-0254021 | Socket Head Button Screw | 1/4-20x1/2 | 6 |
| 48 | TS-2246122 | Socket Head Button Screw | M6x12 | 4 |
| 49 | 2013-333 | Bush | | 2 |
| 50 | TS-2284302 | Screw | M4x30 | 8 |
| 51 | TS-0254031 | Socket Head Button Screw | 1/4-20x5/8 | 4 |
| 52 | TS-0570011 | Hex Nut | 1/4-20 | 1 |
| 53 | TS-1532042 | Screw | M4x12 | 4 |
| 54 | TS-1540021 | Hex Nut | M4 | 12 |
| 55 | JWBS24-155E | Label | | 1 |
| 56 | JWBS24-156E | Cord (Limit Switch) | | 3 |

| Index No. | Part No. | Description | Size | Qty |
|-----------|--------------|-----------------|------------|-----|
| 61 | TS-081C032 | Screw | #10-24x1/2 | 2 |
| 62 | TS-069204 | Flat Washer | #10 | 4 |
| 63 | JWBS18DX-147 | Tracking Window | | 1 |
| 64 | TS-0720051 | Lock Washer | #10 | 2 |
| 65 | JWBS24-165E | Fuse Base | | 3 |
| 66 | JWBS24-166E | Fuse | 1A | 3 |
| 67 | JWBS24-167E | Fuse Base Plate | | 1 |

Saw Body Assembly

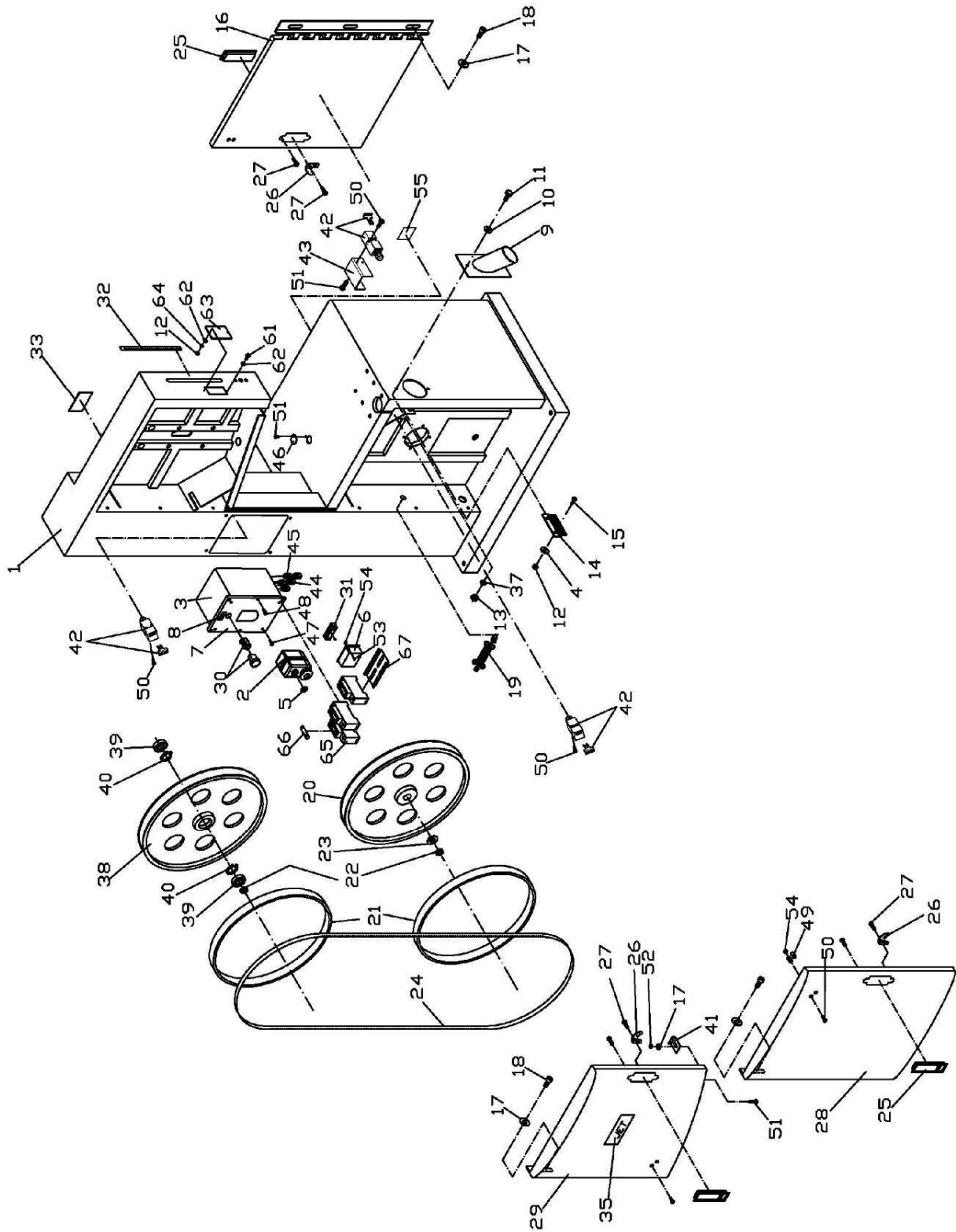
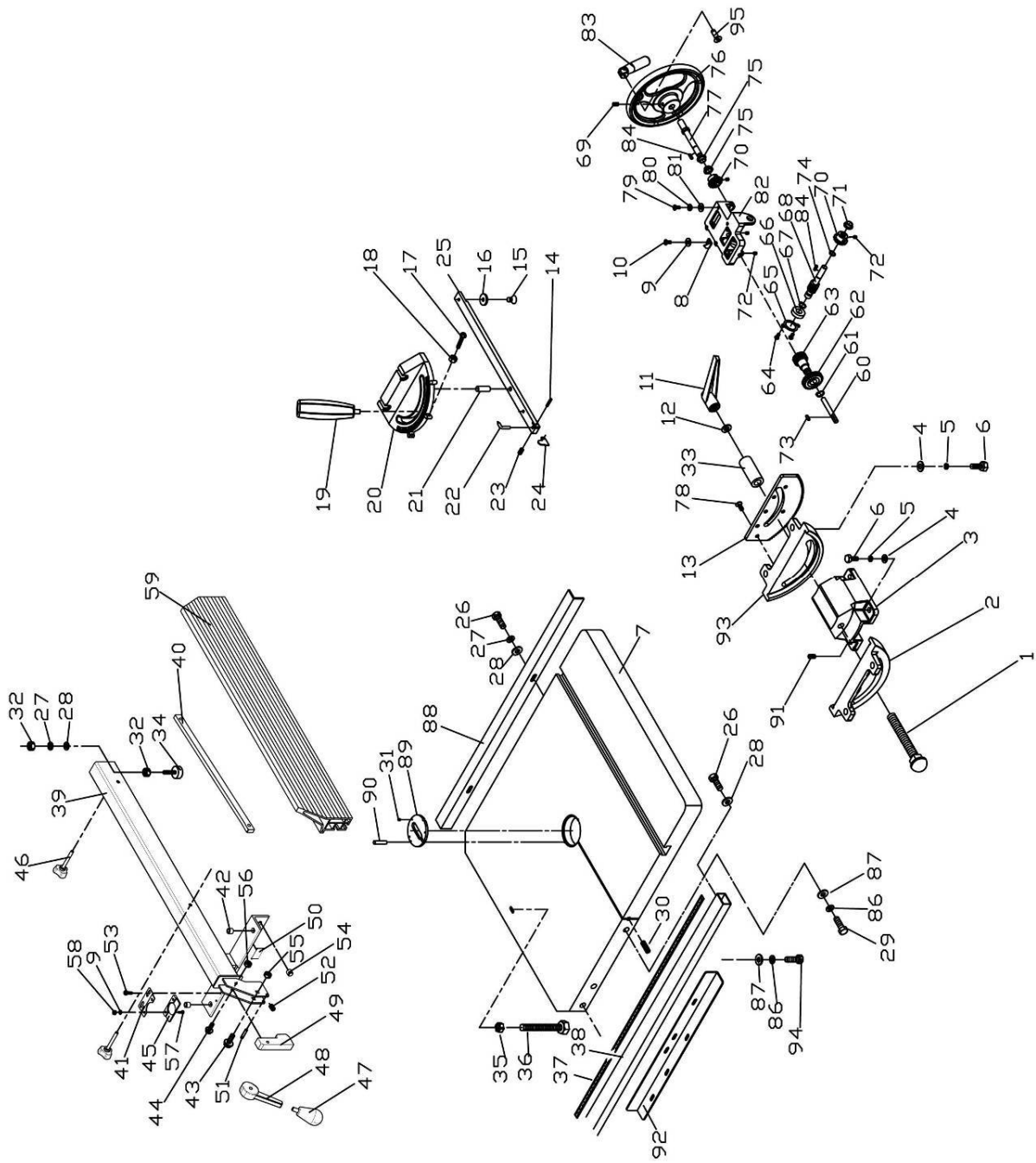


Table Assembly

| Index No. | Part No. | Description | Size | Qty |
|-----------|-------------|--|---------------|-----|
| 1 | 2013-201 | Carriage Bolt | 1/2-12x9 | 1 |
| 2 | 6295149 | Trunnion (Left Side) | | 1 |
| 3 | 2013-203 | Table Bracket | | 1 |
| 4 | TS-0680041 | Flat Washer | 3/8 | 8 |
| 5 | TS-0720091 | Lock Washer | 3/8 | 8 |
| 6 | TS-0060061 | Hex Cap Screw | 3/8-16x1-1/4 | 8 |
| 7 | 6294836E | Work Table | | 1 |
| 8 | 6295155 | Pointer | | 1 |
| 9 | TS-0720051 | Lock Washer | #10 | 3 |
| 10 | TS-081C022 | Phillips Pan Head Machine Screw | #10-24x3/8 | 1 |
| 11 | 6295158 | Locking Handle | | 1 |
| 12 | TS-0680061 | Flat Washer | 1/2 | 1 |
| 13 | 2013-213 | Angle Scale Plate | | 1 |
| | 6295328E | Miter Gauge Assembly (Items 14 thru 25) | | 1 |
| 14 | 6295161 | Pin | | 1 |
| 15 | 6295162 | Flat Head Screw | 1/4 | 1 |
| 16 | 6295163 | Guard Disc | | 1 |
| 17 | TS-1533062 | Phillips Pan Head Machine Screw | M5x20 | 3 |
| 18 | TS-1540031 | Nut | M5 | 3 |
| 19 | 6295166E | Knob | | 1 |
| 20 | 6295167 | Miter Gauge Body | | 1 |
| 21 | 6295168 | Pin | | 1 |
| 22 | 6295169 | Pointer | | 1 |
| 23 | TS-1521011 | Socket Set Screw | M4x4 | 1 |
| 24 | 6295171 | Stop Block | | 1 |
| 25 | JWBS24-225E | Miter Bar | | 1 |
| 26 | TS-0050021 | Hex Cap Screw | 1/4-20x5/8 | 3 |
| 27 | TS-0720071 | Lock Washer | 1/4 | 2 |
| 28 | TS-0680021 | Flat Washer | 1/4 | 3 |
| 29 | TS-0051061 | Hex Cap Screw | 5/16-18x1-1/4 | 3 |
| 30 | TS-0270051 | Socket Set Screw | 5/16-18x1/2 | 1 |
| 31 | TS-1521011 | Socket Set Screw | M4x4 | 3 |
| 32 | TS-0561011 | Hex Nut | 1/4"-20 | 2 |
| 33 | 2013-253 | Bushing | | 1 |
| 34 | 6295181 | Sliding Pad | | 1 |
| 35 | TS-0570031 | Hex Nut | 3/8-16 | 1 |
| 36 | TS-0060171 | Hex Cap Screw | 3/8-16x4 | 1 |
| 37 | 6294838 | Scale | | 1 |
| 38 | 6294839E | Guide Rail | | 1 |
| | JWBS24-FAE | Fence Assembly (Item 9,27,28,32,34,39 thru 59) | | 1 |
| 39 | 6294840E | Fence Body | | 1 |
| 40 | JWBS24-240E | Bar | | 1 |
| 41 | 800708950C | Cursor Bracket | | 1 |
| 42 | XF-5 | Nylon Adjustment Screw | | 2 |
| 43 | TS-0152031 | Carriage Bolt | 5/16-18x1-1/2 | 1 |
| 44 | TS-0151041 | Carriage Bolt | 1/4-20x1-1/2 | 1 |
| 45 | 800708950D | Cursor | | 1 |
| 46 | JWBS24-246E | Knob | | 2 |
| 47 | 6430055 | Knob | | 1 |
| 48 | 3076232 | Lock Handle | | 1 |
| 49 | 3215301 | Lock Plate | | 1 |
| 50 | 3575080 | Pad | | 2 |
| 51 | 6626031 | Spring Pin | | 1 |
| 52 | 6813042 | Spring | | 1 |
| 53 | TS-081D022 | Screw | #10-32x3/8 | 2 |
| 54 | TS-0271031 | Set Screw | 3/8-16x3/8 | 2 |

| Index No. | Part No. | Description | Size | Qty |
|-----------|-------------|---------------------------------|-------------|-----|
| 55 | TS-0640081 | Nylon Nut | 5/16-18 | 1 |
| 56 | TS-0640071 | Nylon Nut | 1/4-20 | 1 |
| 57 | TS-081D021 | Screw | #10-32x3/8 | 2 |
| 58 | TS-0560081 | Hex Nut | #10-32 | 2 |
| 59 | JWBS24-259E | Fence | | 1 |
| 60 | 2013-260 | Shaft | | 1 |
| 61 | 2013-261 | C-Ring | S-17 | 1 |
| 62 | 2013-262 | Gear | | 1 |
| 63 | 2013-263 | Worm Gear | | 1 |
| 64 | TS-081F032 | Phillips Pan Head Machine Screw | 1/4-20X1/2 | 2 |
| 65 | 2013-265 | Worm Gear Cap | | 1 |
| 66 | BB-6002 | Ball Bearing | 6002 | 1 |
| 67 | 2013-267 | C-Ring | S-15 | 1 |
| 68 | 2013-268 | Worm Shaft | | 1 |
| 69 | TS-0270051 | Socket Set Screw | 5/16-18X1/2 | 2 |
| 70 | 2013-270 | Bevel Gear | | 2 |
| 71 | 2013-271 | Bushing | | 1 |
| 72 | TS-0267021 | Socket Set Screw | 1/4-20x1/4 | 6 |
| 73 | 2013-273 | Key | 5x5x12 | 1 |
| 74 | 2013-274 | C-Ring | S-13 | 1 |
| 75 | 2012-275 | Bushing | | 2 |
| 76 | 2013-276 | Handwheel Assembly | | 1 |
| 77 | 2013-277 | Shaft | | 1 |
| 78 | TS-0246031 | Flat Head Socket Screw | 5/16-18x3/4 | 6 |
| 79 | TS-0255031 | Button Head Socket Screw | 5/16-18x5/8 | 4 |
| 80 | TS-0720081 | Lock Washer | 5/16 | 4 |
| 81 | TS-0680031 | Flat Washer | 5/16 | 4 |
| 82 | 2013-282 | Gear Bracket | | 1 |
| 83 | 2013-283 | Handle | | 1 |
| 84 | 2013-284 | Key | 3x3x8 | 2 |
| 86 | TS-0720081 | Lock Washer | 5/16 | 8 |
| 87 | TS-0680031 | Flat Washer | 5/16 | 8 |
| 88 | 6294837E | Rear Rail | | 1 |
| 89 | 6295177E | Table Insert | | 1 |
| | 6295177AE | Table Insert (Narrow) | | 1 |
| 90 | 6295178 | Spring Pin | Ø3x10 | 2 |
| 91 | TS-0270061 | Socket Set Screw | 5/16-18x5/8 | 4 |
| 92 | 6294841E | Front Rail | | 1 |
| 93 | 2013-259 | Trunnion (Right Side) | | 1 |
| 94 | TS-0081031 | Hex Cap Screw | 5/16-18x3/4 | 5 |
| 95 | TS-2286251 | Flat Head Socket Screw | M6x25 | 1 |

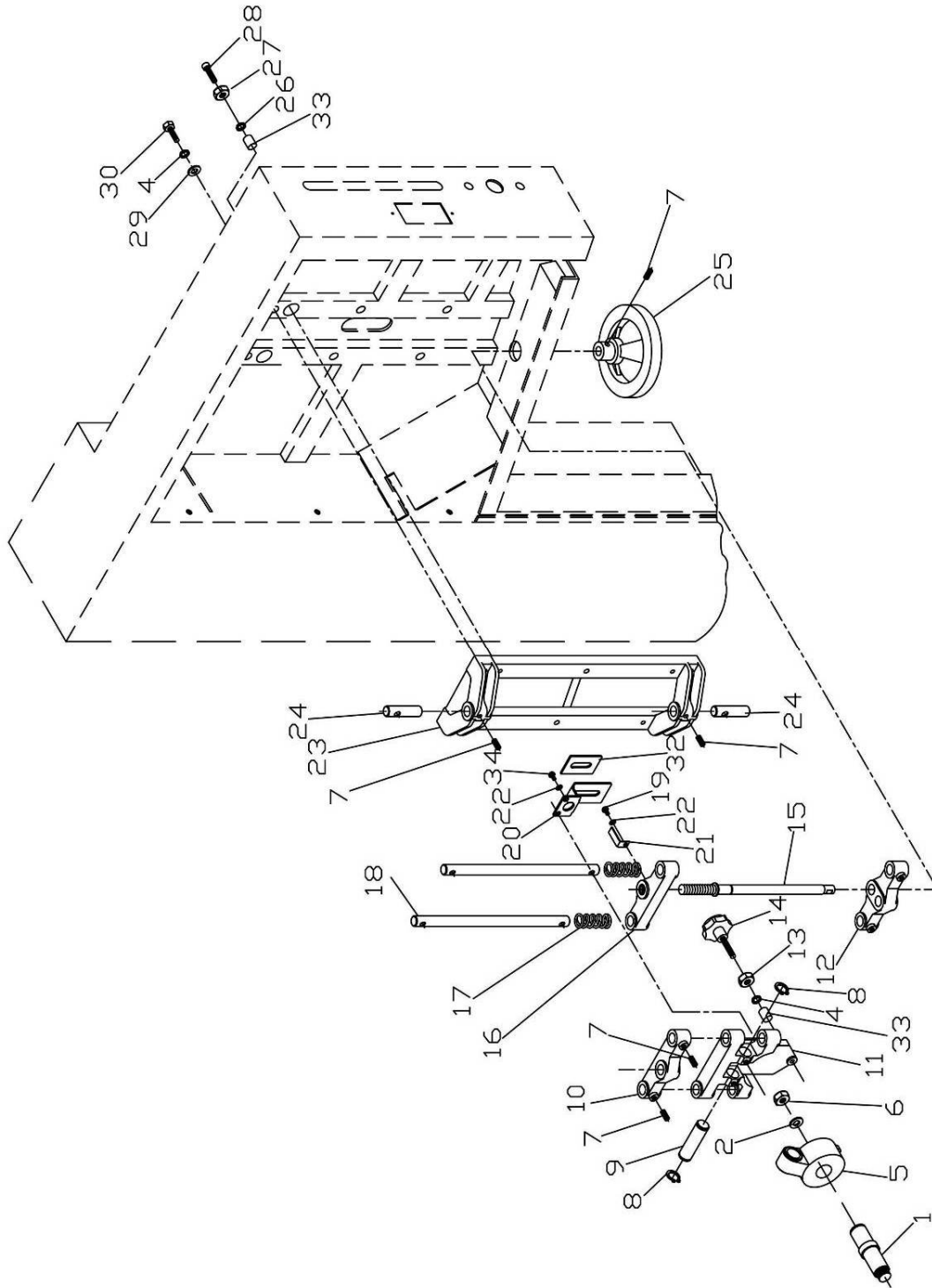
Table Assembly



Upper Wheel Base Assembly

| Index No. | Part No. | Description | Size | Qty |
|-----------|------------|---------------------------------|-----------------|-----|
| 1 | 2013-301 | Upper Wheel Shaft | | 1 |
| 2 | TS-0680091 | Flat Washer | 3/4 | 1 |
| 4 | TS-0720091 | Lock Washer | 3/8 | 8 |
| 5 | 2013-305 | Upper Wheel Shaft Bracket | | 1 |
| 6 | 6295890 | Lock Nut | 3/4-16 UNF | 1 |
| 7 | TS-0270051 | Socket Set Screw | 5/16-18x1/2 | 5 |
| 8 | 6295213 | C-Ring | S-20 | 2 |
| 9 | 6295214 | Lever Shaft | | 1 |
| 10 | 6295215 | Upper Adjustment Bracket | | 1 |
| 11 | 6295891 | Upper Wheel Guide Bracket | | 1 |
| 12 | 6295217 | Adjustment Bracket | | 1 |
| 13 | TS-0640091 | Nylon Lock Hex Nut | 3/8-16 | 1 |
| 14 | 6295219 | Lock Knob | | 1 |
| 15 | 6294812 | Adjustment Screw | | 1 |
| 16 | 6295221 | Elevator Bracket | | 1 |
| 17 | 6294813 | Spring | | 2 |
| 18 | 6294814 | Guide Bar | | 2 |
| 19 | TS-0810012 | Screw | #10-24x1/4 | 1 |
| 20 | 6294815 | Bracket | | 1 |
| 21 | 6295226 | Pointer | | 1 |
| 22 | TS-0720051 | Lock Washer | #10 | 3 |
| 23 | 6294816 | Upper Wheel Bracket Base | | 1 |
| 24 | 6295228 | Bracket Shaft | | 2 |
| 25 | 6295229 | Handwheel | | 1 |
| 26 | TS-0720081 | Lock Washer | 5/16 | 2 |
| 27 | TS-0640081 | Nylon Insert Lock Nut | 5/16-18 | 2 |
| 28 | TS-0208121 | Socket Head Cap Screw | 5/16-18 x 2-1/2 | 2 |
| 29 | TS-0680041 | Flat Washer | 3/8 | 4 |
| 30 | TS-0060081 | Hex Cap Screw | 3/8-16x1-3/4 | 6 |
| 32 | 6294818E | Scale (Blade tension) | | 1 |
| 33 | 2013-333 | Bushing | | 3 |
| 34 | TS-081C022 | Phillips Pan Head Machine Screw | #10-24x3/8 | 2 |

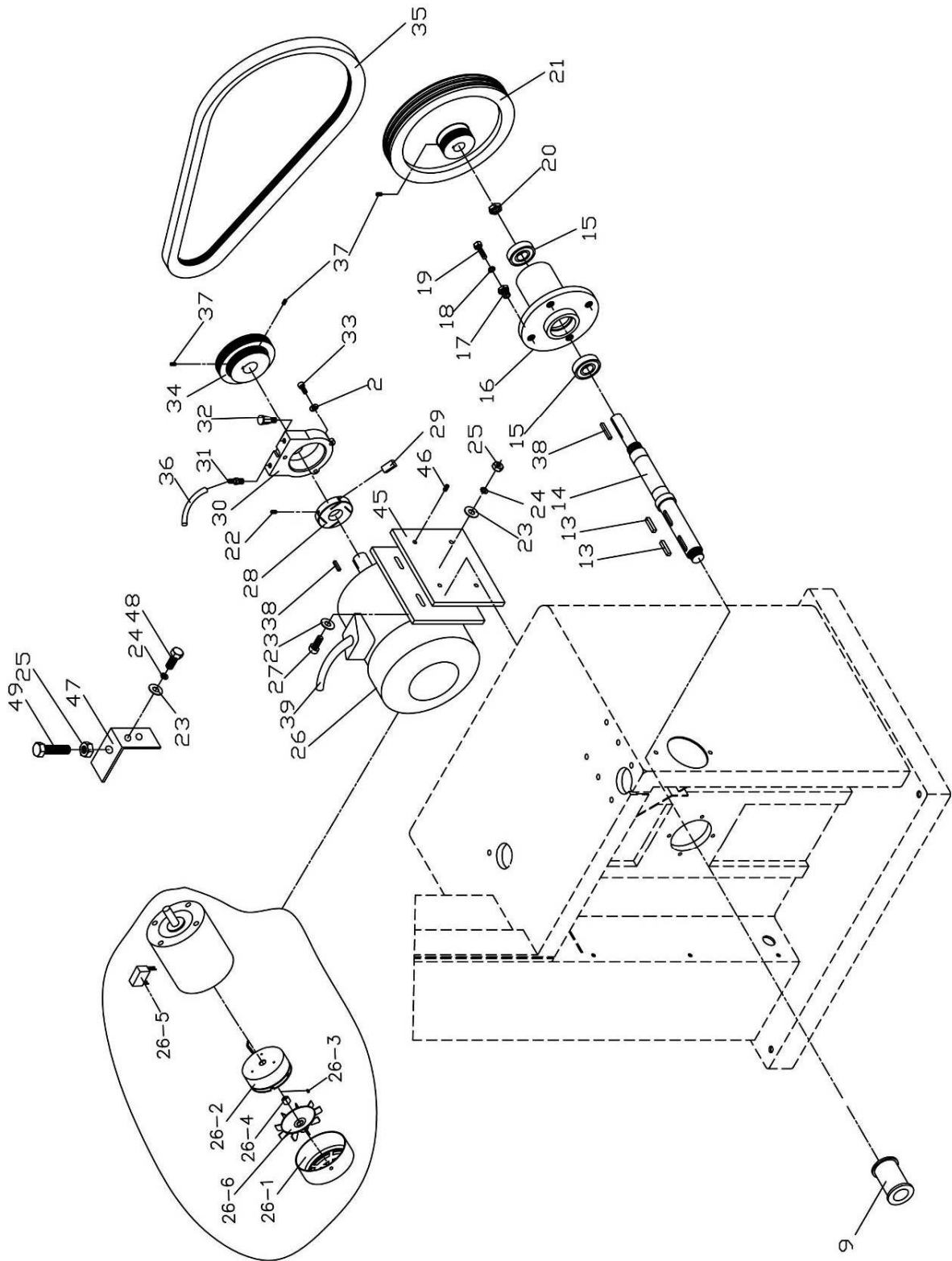
Upper Wheel Base Assembly



Lower Wheel Base Assembly

| Index No. | Part No. | Description | Size | Qty |
|-----------|-------------|-----------------------|---------------|-----|
| 2 | TS-0680021 | Flat Washer | 1/4 | 5 |
| 9 | 6295243A | Brake Wheel | | 1 |
| 13 | 6295247 | Key | 7x7x25 | 2 |
| 14 | 6295248A | Shaft | | 1 |
| 15 | 6295249 | Ball Bearing | 6206 | 2 |
| 16 | 6295250 | Bearing Base | | 1 |
| 17 | 6295251 | Adjusting Screw | | 4 |
| 18 | TS-0720091 | Lock Washer | 3/8 | 4 |
| 19 | TS-0060091 | Hex Cap Screw | 3/8-16x2 | 5 |
| 20 | 6295253 | Hex Nut | M28 | 1 |
| 21 | 6294822 | Spindle Pulley | | 1 |
| 22 | TS-0267041 | Socket Set Screw | 1/4-20x3/8 | 2 |
| 23 | TS-0680031 | Flat Washer | 5/16 | 10 |
| 24 | TS-0720081 | Lock Washer | 5/16 | 6 |
| 25 | TS-0561021 | Hex Nut | 5/16-18 | 5 |
| 26 | 2415-426AE | Motor | 5HP, 3Ph | 1 |
| 26-1 | 2415-426MCE | Motor Cover | | 1 |
| 26-2 | 2415-426BME | Brake Magnet | | 1 |
| 26-3 | JWBS18DX-KE | Key | 4x4x14 | 1 |
| 26-4 | 2415-426BE | Block | | 1 |
| 26-5 | JWBS18DX-RE | Rectifier | | 1 |
| 26-6 | 2415-426MFE | Motor Fan | | 1 |
| 27 | TS-0208081 | Socket Head Cap Screw | 5/16-18x1-1/2 | 4 |
| 28 | 6295258 | Core | | 1 |
| 29 | 6295259 | Core Piece | | 4 |
| 30 | 6295260 | Fan Cover | | 1 |
| 31 | 6295261 | Hose Connector | | 1 |
| 32 | 6295262E | Air Input Valve | | 1 |
| 33 | TS-0207041 | Socket Head Cap Screw | 1/4-20x3/4 | 3 |
| 34 | 6294825 | Motor Pulley | | 1 |
| 35 | 6294826 | Ploy V-Belt | 540J | 1 |
| 36 | 6294827 | Hose | | 1 |
| 37 | TS-0270031 | Socket Set Screw | 5/16-18x3/8 | 6 |
| 38 | 6295268 | Key | 7x7x40 | 2 |
| 39 | 6294828E | Motor Cord | | 1 |
| 45 | 6294830A | Motor Plate | | 1 |
| 46 | TS-0270031 | Socket Set Screw | 5/16-18x3/8 | 4 |
| 47 | 6294832 | Belt Tension Bracket | | 1 |
| 48 | TS-0051021 | Hex Cap Screw | 5/16-18x5/8 | 2 |
| 49 | TS-0051111 | Hex Cap Screw | 5/16-18x2-1/2 | 1 |

Lower Wheel Base Assembly

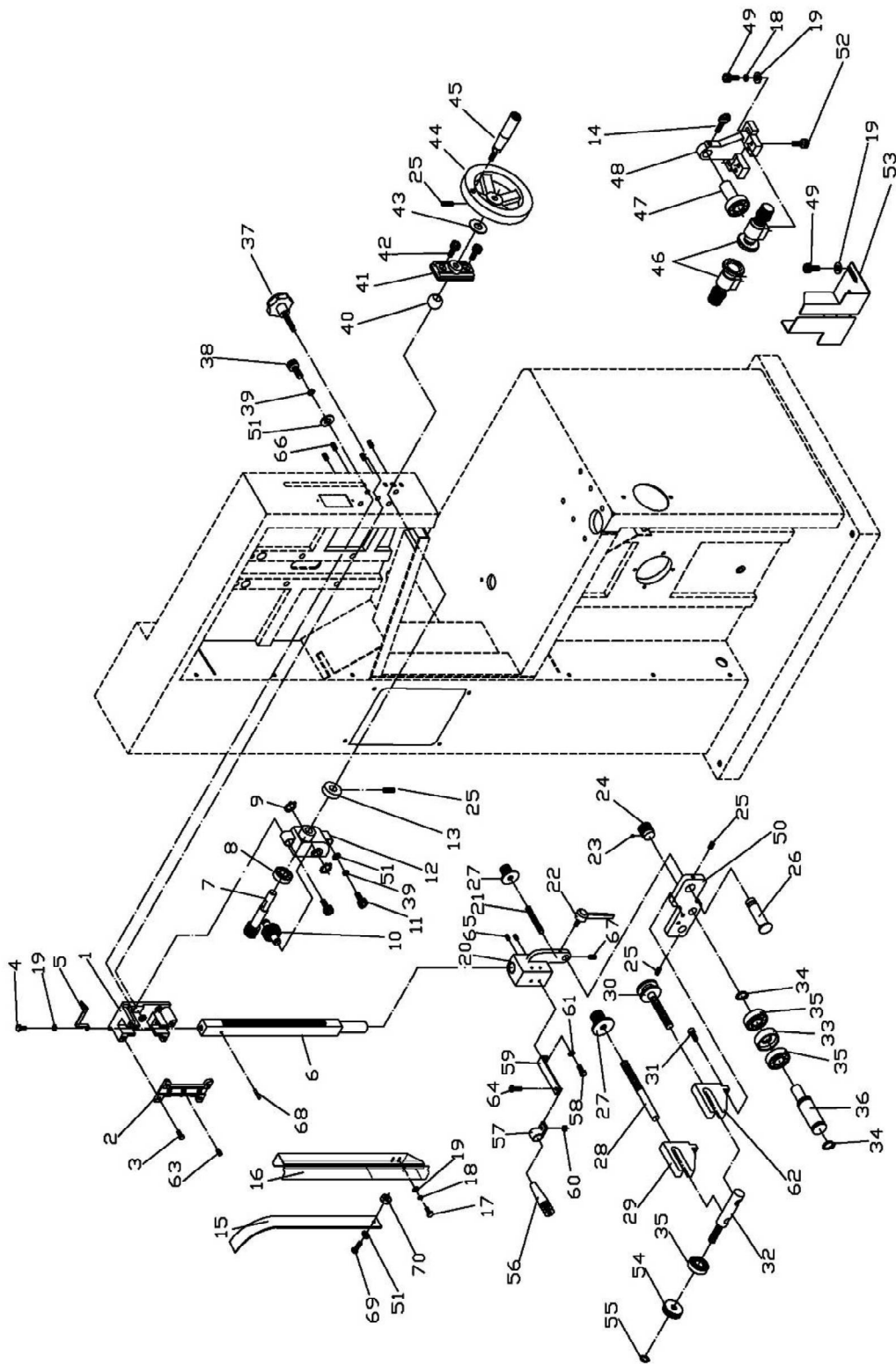


Guide Bracket Assembly

| Index No. | Part No. | Description | Size | Qty |
|-----------|------------|-------------------------------|---------------|-----|
| 1 | 6295275 | Guide Bar Case Bracket | | 1 |
| 2 | 6295276 | Cover | | 1 |
| 3 | TS-0081031 | Hex Cap Screw | 5/16-18x3/4 | 4 |
| 4 | TS-0050011 | Hex Cap Screw | 1/4-20x1/2 | 1 |
| 5 | 6295278E | Pointer | | 1 |
| 6 | 6294835E | Guide Bar | | 1 |
| 7 | 6295280 | Worm | | 1 |
| 8 | 6295281 | Miniature Ball Bearing | 609 | 1 |
| 9 | 6295282 | C-Ring | S-12 | 2 |
| 10 | 6295283 | Gear | | 1 |
| 11 | TS-0208071 | Socket Head Cap Screw | 5/16-18x1-1/4 | 6 |
| 12 | 6295285 | Gear Base | | 1 |
| 13 | 6295286 | Set Block | | 1 |
| 14 | 6295287 | Thumb Screw | 1/4-20x1/4 | 1 |
| 15 | 6295288E | Inner Blade Guard | | 1 |
| 16 | 6295289E | Blade Guard | | 1 |
| 17 | TS-0254031 | Socket Head Button Screw | 1/4-20x5/8 | 2 |
| 18 | TS-0720071 | Lock Washer | 1/4 | 4 |
| 19 | TS-0680021 | Flat Washer | 1/4 | 8 |
| 20 | 6295291 | Guide Bar Bracket | | 1 |
| 21 | TS-0270131 | Socket Set Screw | 5/16-18x2 | 1 |
| 22 | 6295293 | Locking Handle | 1/4-20x3/4 | 1 |
| 23 | TS-1521011 | Socket Set Screw | M4x4 | 4 |
| 24 | 6295294 | Knob | | 2 |
| 25 | TS-0267021 | Socket Set Screw | 1/4-20x1/4 | 6 |
| 26 | 6295296 | Lever Shaft | | 1 |
| 27 | 6295297 | Hand Nut | | 2 |
| 28 | 6295298 | Bolt | | 1 |
| 29 | 6295299 | Support Bearing Bracket (L) | | 1 |
| 30 | 6295300 | Adjustment Bolt | | 1 |
| 31 | TS-0207041 | Socket Head Cap Screw | 1/4-20x3/4 | 2 |
| 32 | 6295302 | Support Bearing Shaft | | 1 |
| 33 | 6295303 | Spacer | | 2 |
| 34 | 6295304 | C-Ring | S-15 | 4 |
| 35 | 6295305 | Ball Bearing | 6202 | 5 |
| 36 | 6295306 | Shaft | | 2 |
| 37 | 6295307 | Knob | 3/8-16x2 | 1 |
| 38 | TS-0208071 | Socket Head Cap Screw | 5/16-18x1-1/4 | 4 |
| 39 | TS-0720081 | Lock Washer | 5/16 | 6 |
| 40 | 6295308 | Ball Bearing | | 1 |
| 41 | 6295309E | Bracket | | 1 |
| 42 | TS-0208041 | Socket Head Cap Screw | 5/16-18x3/4 | 2 |
| 43 | 6295311 | Plastic Washer | | 1 |
| 44 | 6295312 | Handwheel | | 1 |
| 45 | 6295313 | Handle | | 1 |
| 46 | 6295314 | Guide Wheel Assembly | | 1 |
| 47 | 6295315 | Blade Support Shaft w/Bearing | | 1 |
| 48 | 6295316 | Lower Guide Bracket | | 1 |
| 49 | TS-0050051 | Hex Cap Screw | 1/4-20x1 | 2 |
| 50 | 6295318 | Bracket | | 1 |
| 51 | TS-0680031 | Flat Washer | 5/16 | 5 |
| 52 | TS-0207021 | Socket Head Cap Screw | 1/4-20x1/2 | 4 |
| 53 | 6295320E | Lower Blade Guard | | 1 |
| 54 | 6295321E | Locking Nut | | 1 |

| Index No. | Part No. | Description | Size | Qty |
|-----------|------------|---------------------------------|-------------|-----|
| 55 | 6295322 | C-Ring | E-5 | 1 |
| 56 | 6295323 | Air Nozzle | | 1 |
| 57 | 6295324 | Hose Clamp | | 1 |
| 58 | TS-081C022 | Screw | #10-24x3/8 | 1 |
| 59 | 6295325 | Bracket | | 1 |
| 60 | TS-0560071 | Hex Nut | #10-24 | 1 |
| 61 | TS-069204 | Flat Washer | #10 | 1 |
| 62 | 6295327 | Support Bearing Shaft (R) | | 1 |
| 63 | TS-0270031 | Socket Set Screw | 5/16-18x3/8 | 3 |
| 64 | TS-081C032 | Phillips Pan Head Machine Screw | #10-24x1/2 | 1 |
| 65 | TS-0270051 | Socket Set Screw | 5/16-18x1/2 | 4 |
| 66 | TS-0267041 | Socket Set Screw | 1/4-20x3/8 | 4 |
| 67 | 2013-567 | Eccentric Set Screw | | 1 |
| 68 | JWS24-568E | Spring Pin | Ø5x10 | 1 |
| 69 | TS-0255021 | Socket Head Button Screw | 5/16-18x1/2 | 1 |
| 70 | TS-0570021 | Hex Nut | 5/16-18 | 1 |

Guide Bracket Assembly



**JWBS-24
1791260T**

| | colour of strands | Litzenfarben | couleur des cordons |
|------|-------------------|--------------|---------------------|
| BK | black | schwarz | noir |
| WH | white | weiß | blanc |
| BU | blue | blau | bleu |
| YE | yellow | gelb | jaune |
| RD | red | rot | rouge |
| BN | brown | braun | brun |
| GY | grey | grau | gris |
| GNYE | green-yellow | grün-gelb | vert-jaune |

| | meaning of symbol | Bedeutung der Zeichen | interprétation |
|-----|--------------------------|------------------------|-----------------------|
| M | main motor | Hauptmotor | moteur principal |
| S3 | switch | Schalter | interrupteur |
| S2 | off switch | Aus-Schalter | bouton arrêt |
| S1 | start switch | Ein-Schalter | bouton marche |
| KM1 | contactor for main motor | Hauptschütz | contacteur moteur |
| OL | overload cut-off | Überlastschutzschalter | déclencheur surcharge |
| BR | motor break | Motorbremse | frein de moteur |
| TR | transformer | Transformator | transformateur |
| LS | limit switch | Positionsendschalter | micro |
| R | rectifier | Gleichrichter | rectifier |

400/50/3

