



**Parts list insert (For Russia area) 14-inch
Woodworking Band Saw**
Model: JWBS-14OS



This parts list insert is made for Russia customers. Except for the difference noted for electric device in this insert, all other contents in the owner's manual applies to this machine.

10/2016

Specifications

| | |
|--------------------------------------|------------------------------|
| Model Number..... | JWBS-14OS |
| Stock Number | 708113A-RU |
| Cutting Capacity (height/in.)..... | 6 |
| Cutting Capacity (width/in.) | 13-1/2 |
| Minimum Blade Width (in.)..... | 1/8 |
| Maximum Blade Width (in.)..... | 3/4 |
| Blade Length (in.)..... | 93-1/2 |
| Blade Speed (SFPM) | 2800 |
| Table Size (in.)..... | 14x 14 |
| Table Slot Size (DxW/in.)..... | 3/8 x 3/4 |
| Table Height From Floor (in.)..... | 44 |
| Table Tilt (deg.)..... | 45 right, 10 left |
| Dust Port Diameter (in.) | 4 |
| Overall Dimensions (HxWxD/in.) | 68 x24x 26-1/2 |
| Motor | TEFC, 0.75kW, 1Ph, 230V 50Hz |
| Net Weight | 80kg |
| Shipping Weight | 85 kg |

Replacement Parts

Replacement parts are listed on the following pages. To order parts or reach our service department. Having the Model Number and Serial Number of your machine available when you call will allow us to serve you quickly and accurately.

Body Assembly (JWBS-14OS-RU Band Saw)

| Index No. | Part No. | Description | Size | Qty |
|-----------|-----------------|---|-----------------------------|-----|
| 1 | JWBS14OS-101 | Base | | 1 |
| 2 | 990180 | Hex Cap Screw | M16x55 | 1 |
| 3 | TS-155010 | Flat Washer | M16 | 2 |
| 4 | TS-154010 | Hex Nut | M16 | 1 |
| 5 | 100031 | Pin | | 4 |
| 6 | JWBS14OS-106 | Lower Wheel Shaft | | 1 |
| 7 | BB-6204VV | Ball Bearing | 6204LLU | 2 |
| 8 | KD050525 | Key | 5x5x25 | 2 |
| 9 | TS-1550061 | Flat Washer | M8 | 1 |
| 10 | TS-2248162 | Button Head Socket Screw | M8x16 | 1 |
| 11 | M11241101EAS02 | Motor | 0.75kW, 230V, 50Hz | 1 |
| | JWBS14OS-SC | Starting Capacitor (not shown) | 300MFD, 125VAC | 1 |
| | JWBS14OS-RC | Running Capacitor (not shown) | 30µF, 250VAC | 1 |
| | JWBS14OS-CC | Capacitor Cover (not shown) | | 2 |
| | JWBS14OS-CSS | Centrifugal Switch Set (not shown) | | 1 |
| | JWBS14OS-MFC | Motor Fan Cover (not shown) | | 1 |
| 12 | 130027 | Motor Pulley | 50Hz | 1 |
| 13 | TS-1523031 | Set Screw | M6x10 | 1 |
| 14 | 170239B | Switch | KJD12 | 1 |
| 15 | 990811 | Tapping Screw | M3.5x12 | 2 |
| 16 | TS-1550021 | Flat Washer | M4 | 2 |
| 17 | 150261 | Switch Plate | | 1 |
| 18 | TS-1533052 | Pan Head Screw | M5x16 | 2 |
| 19 | WE050000 | Star Washer | M5 | 2 |
| 20 | 523028U-1 | Switch Box | | 1 |
| 21 | 150056 | Switch Backing Plate | | 1 |
| 23 | 990821 | Pan Head Screw | M5x6 | 2 |
| 24 | 998621 | Strain Relief | | 2 |
| 25 | JWBS14OS-125-RU | Power Cord (with VDE plug) | VDE 1.0 mm ² x3C | 1 |
| 26 | JWBS14OS-126-RU | Motor Cord | VDE 1.0 mm ² x3C | 1 |
| 27 | 998621 | Strain Relief | | 1 |
| 28 | JWBS14OS-128 | Upper Frame Arm | | 1 |
| 29 | 990651 | Lock Knob | M10x30 | 1 |
| | 100016ACP-1 | Sliding Bracket Assembly (includes #30-39,125) | | 1 |
| 30 | 100016A-1 | Sliding Bracket(serial no. 07112632 and higher) | | 1 |
| 31 | NW080000 | Wing Nut | M8 | 1 |
| 32 | 990652 | Lock Knob | M8x45 | 1 |
| 33 | 990653 | Blade Adjusting Screw | | 1 |
| 34 | 100021 | Steel Pin | | 2 |
| | A100019 | Upper Wheel Shaft Hinge Assy (includes #35 thru 37) | | 1 |
| 35 | 150086 | Upper Wheel Shaft | | 1 |
| 36 | 992314 | Spring Pin | φ4x24 | 1 |
| 37 | 100019 | Upper Wheel Shaft Hinge | | 1 |
| 38 | 100015A | Coil Spring | | 1 |
| 39 | 150090 | Square Nut | M10 | 1 |
| 40 | JWBS14OS-140 | Upper Wheel | | 1 |
| 41 | 100025A | Wheel Protector | | 2 |
| 42 | TS-1540083 | Hex Nut | M12 | 1 |
| 43 | 992522 | Retaining Ring | R35 | 2 |
| 44 | BB-6202ZZ | Ball Bearing | 6202ZZ | 2 |
| 45 | JWBS14OS-145 | Lower Wheel | | 1 |
| 46 | TS-1550061 | Flat Washer | M8 | 1 |
| 47 | JWBS14OS-147 | Hex Head Bolt (Left Thread) | M8x20 | 1 |
| 48 | JWBS14OS-148 | Lower Wheel Guard | | 1 |
| 49 | 150024 | Catch Knob | M8 | 2 |

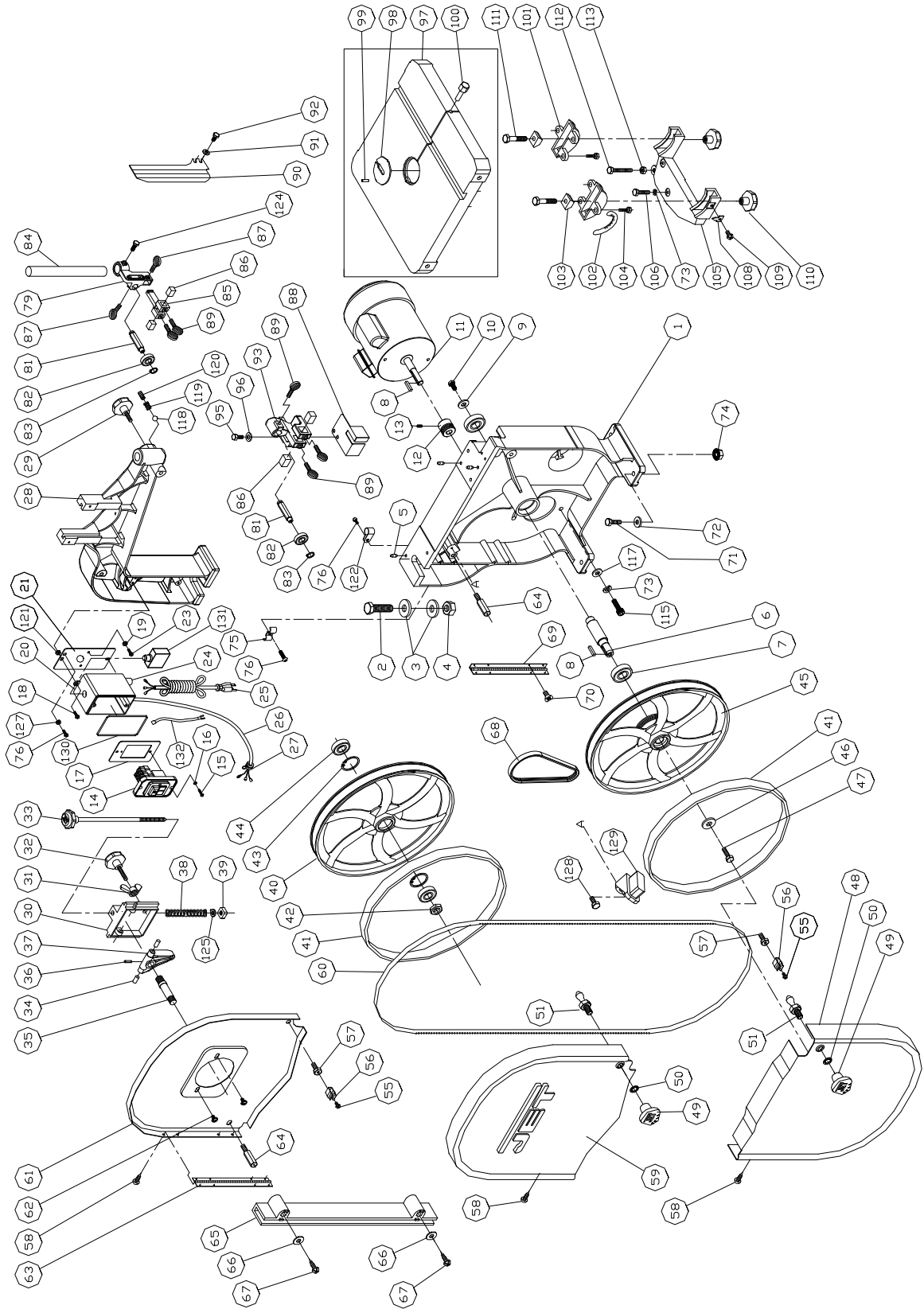
50 WI080000..... Gear Washer..... M8..... 2

| Index No. | Part No. | Description | Size | Qty |
|-----------|--------------|---------------------------------|-------------------|-----|
| 51 | PWBS14-136 | Stud Latch | | 2 |
| 55 | TS-1533042 | Pan Head Screw | M5x12 | 2 |
| 56 | 150079 | Catch | | 2 |
| 57 | 150054 | Locating Bolt | | 2 |
| 58 | 990804 | Tapping Screw | M4x8 | 12 |
| 59 | 150029W | Outer Wheel Cover | | 1 |
| 60 | | Saw Blade | 6TPI 93-1/2"x3/8" | 1 |
| 61 | 150028W | Inner Wheel Cover | | 1 |
| 62 | JWBS14OS-162 | Washer Head Screw | M5x8 | 2 |
| 63 | 150901 | Upper Hinge | | 1 |
| 64 | 150066 | Stud | | 2 |
| 65 | 110070 | Blade Guard | | 1 |
| 66 | 150097 | Washer | | 2 |
| 67 | 990811 | Tapping Screw | M3.5x12 | 2 |
| 68 | JWBS14OS-168 | Poly V-Belt | 185J05 | 1 |
| 69 | 150902 | Lower Hinge | | 1 |
| 70 | TS-1533032 | Phillips Pan Head Machine Screw | M5x10 | 4 |
| 71 | TS-1490061 | Hex Cap Screw* | M8x35 | 4 |
| 72 | TS-1550061 | Flat Washer* | M8 | 4 |
| 73 | TS-2361081 | Lock Washer* | M8 | 4 |
| 74 | JWBS14OS-174 | Serrated Hex Flange Nut* | M8 | 4 |
| 75 | 523024 | Wire Clip* | | 1 |
| 76 | TS-1533042 | Pan Head Screw* | M5x12 | 3 |
| 79 | JWBS14OS-179 | Upper Support Bracket Post | | 1 |
| 80 | 150013A | Thumb Screw | M6x16 | 1 |
| 81 | 150015A | Upper Spacing Sleeve | | 2 |
| 82 | BB-6200ZZ | Ball Bearing | 6200ZZ | 2 |
| 83 | JWBS14OS-183 | Retaining Ring | S10 | 2 |
| 84 | JWBS14OS-184 | Guide Post | | 1 |
| 85 | JWBS14OS-185 | Support Bracket | | 1 |
| 86 | 708719 | Guide Block | | 4 |
| 87 | 150013A | Thumb Screw | M6x16 | 1 |
| 88 | 150101 | Lower Wheel Blade Guard | | 1 |
| 89 | 150014A | Thumb Screw | M6x12 | 5 |
| 90 | 100002A | Upper Wheel Blade Guard | | 1 |
| 91 | TS-1550041 | Flat Washer* | M6 | 2 |
| 92 | TS-1482011 | Hex Cap Screw * | M6x8 | 2 |
| 93 | JWBS14OS-193 | Lower Support Bracket Post | | 1 |
| 95 | TS-1482041 | Hex Cap Screw* | M6x20 | 2 |
| 96 | TS-1550041 | Flat Washer* | M6 | 2 |
| 97 | JWBS14OS-197 | Table | 14"x14" | 1 |
| 98 | 199037 | Table Insert | | 1 |
| 99 | 992311 | Spring Pin | φ3x8 | 1 |
| 100 | 100038 | Table Pin | | 1 |
| 101 | 100042 | Trunnion | | 2 |
| 102 | 100051 | Scale | | 1 |
| 103 | 100041 | Trunnion Clamp Shoe | | 2 |
| 104 | TS-1482021 | Hex Cap Screw | M6x12 | 6 |
| 105 | 110045 | Trunnion Support Bracket | | 1 |
| 106 | TS-1490051 | Hex Cap Screw* | M8x30 | 2 |
| 108 | 110049 | Pointer | | 1 |
| 109 | 990821 | Pan Head Screw | M5x6 | 1 |
| 110 | 990554 | Lock Knob | M10 | 2 |
| 111 | TS-1491081 | Hex Cap Screw | M10x50 | 2 |
| 112 | TS-1490151 | Hex Cap Screw* | M8x80 | 1 |

| Index No. | Part No. | Description | Size | Qty |
|-----------|------------------|------------------------|----------|-----|
| 113 | TS-1540061 | Hex Nut* | M8 | 1 |
| 115 | TS-1504051 | Socket Head Cap Screw* | M8x25 | 2 |
| 117 | TS-1550061 | Flat Washer* | M8 | 2 |
| 118 | 994181 | Steel Ball | | 1 |
| 119 | 150099 | Spring | | 1 |
| 120 | TS-1525011 | Socket Set Screw | M10x10 | 1 |
| 121 | JWBS14OS-1121 | Spring Nut | M4 | 2 |
| 122 | JWBS14OS-1122 | Cord Clamp* | | 1 |
| 124 | TS-1482041 | Hex Cap Screw * | M6x20 | 1 |
| 125 | 150058 | Indicator | | 1 |
| 127 | WE050000 | Gear Washer | M5 | 1 |
| 128 | TS-1481011 | Hex Cap Screw | M5x8 | 1 |
| 129 | JWBS14OS-1129 | Brush | | 1 |
| 130 | 150262 | O Ring | | 1 |
| 131 | 994661 | Overload | 7A | 1 |
| 132 | WA15140102T00E20 | Connecting line | 14AWGx1C | 1 |
| | JWBS14OS-SBHK | Saw Body Hardware Kit | | 1 |

* included in Saw Body Hardware Kit, Part No. JWBS14OS-SBHK

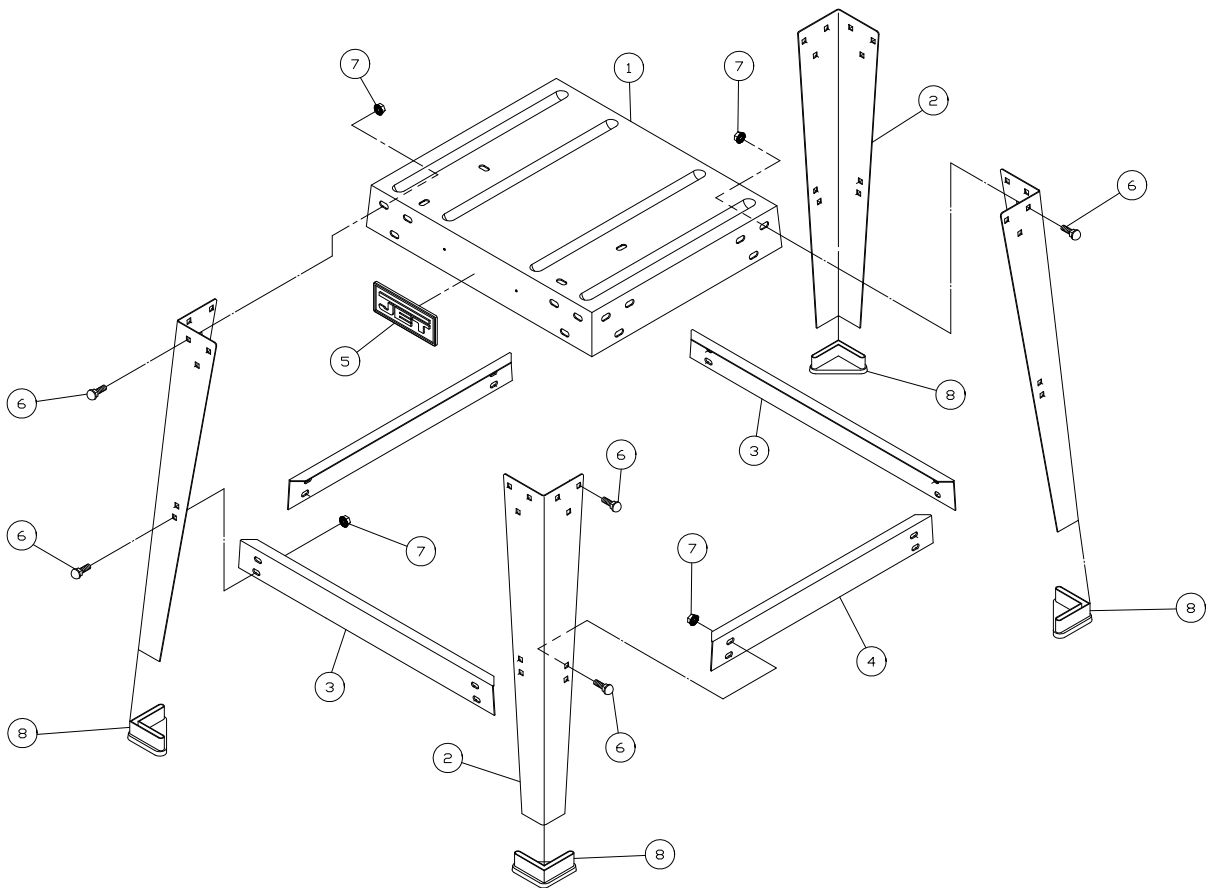
Body Assembly (JWBS-140S Band Saw)



Open Stand Assembly (JWBS-14OS Band Saw)

| Index No. | Part No. | Description | Size | Qty |
|-----------|---------------|-----------------------------|-------|-----|
| 1 | JWBS14OS-201 | Stand Top | | 1 |
| 2 | 150603W | Stand Leg | | 4 |
| 3 | 612050W | Support Plate (long) | | 2 |
| 4 | 612051W | Support Plate (short) | | 2 |
| 5 | JWBS14OS-205 | JET Logo Label | | 1 |
| 6 | 991516 | Carriage Bolt** | M8x16 | 40 |
| 7 | JWBS14OS-174 | Serrated Hex Flange Nut** | M8 | 40 |
| 8 | JWBS14OS-208 | Rubber Foot | | 4 |
| | JWBS14OS-SAHK | Stand Assembly Hardware Kit | | 1 |

**.....included in Stand Assembly Hardware Kit Part No. JWBS14OS-SAHK



Electrical Connections

