

# JET

**MBS-1014W** **Metal Working Bandsaw**

**414477T 400/50/3**

## PARTS LIST

**Walter Meier (Fertigung) AG**

Bahnstrasse 24  
8603 Schwerzenbach  
Switzerland

Phone +41 44 806 47 48

Fax +41 44 806 47 58

[jetinfo.eu@waltermeier.com](mailto:jetinfo.eu@waltermeier.com)

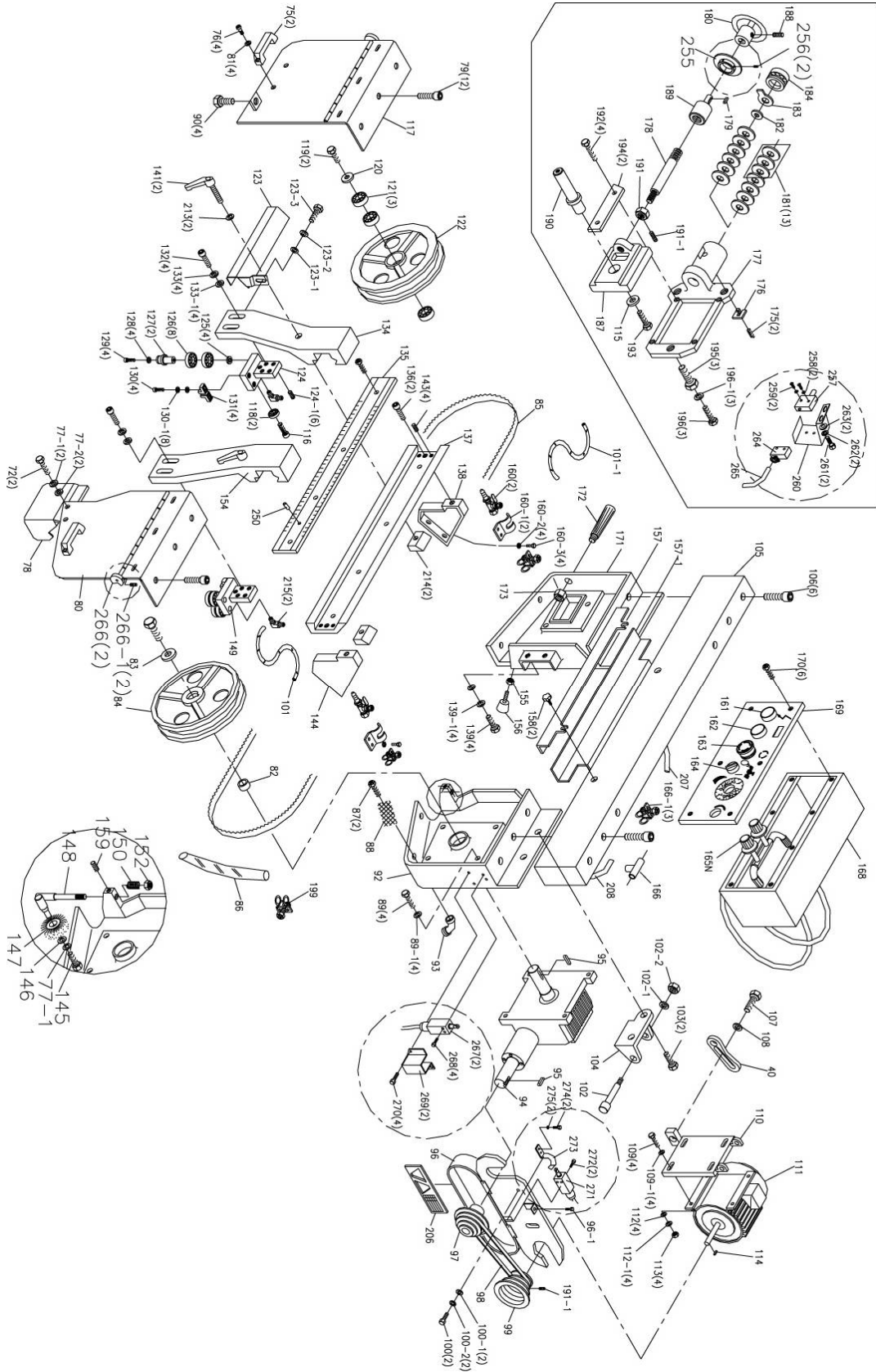
[www.jettools.com](http://www.jettools.com)



P-414477T 2009/08/31



### Arm Breakdown for the MBS-1014W



### Parts List for the MBS-1014W Bandsaw

Index No.	Part No.	Description	Size	Qty.
1A	MBS1014W-1A	Base		1
2	TS-1492071	Hex Cap Bolt	M12x70	4
3	TS-1540081	Hex Nut	M12	4
4	HBS916W-CPAE	Coolant Pump (M2)	400V,50Hz,3Ph	1
5	TS-15311051	Pan Head Screw	M6x16	2
8	HBS916W-08	Hose		1
9	HBS916W-09	Coolant Gauge		1
9-1	TS-1491041	Hex Cap Bolt	M10x30	2
11BN	MBS1014W-11BN	Bed (S/N:01021647 and higher)		1
15	HBS916W-16	Stop Bracket		1
18	HBS916W-18	Lock Handle		1
19	HBS916W-19	Work Stop		1
20	HBS916W-20	Lock Knob		1
21	HBS1018W-21	Handle Wheel Assembly		1
22	HBS1018W-22	Lead Screw Seat		1
23	TS-1490051	Hex Cap Bolt	M8x30	4
23-1	TS-1551061	Lock Washer	M8	2
24AN	MBS1014W-24AN	Lead Screw (S/N:01021647 and higher)	530mm	1
31	HBS1018W-31	Torsion Spring		1
32	HBS916W-32	Pivot Shaft		1
32-1	TS-1550041	Washer	M12	2
32-2	HBS916W-32-2	Bolt w/Zerk fitting		2
33	HBS1018W-33	Pivot Bracket		1
34	TS-1540081	Nut	M12	1
35	TS-1550081	Washer	M12	1
36	TS-1492041	Hex Cap Bolt	M12x40	1
37	HBS916W-37	Torsion Spring Shaft		1
38	HBS916W-38	C-Ring	S-22	1
39	TS-1490041	Hex Cap Bolt	M8x25	1
40	HBS1018W-40	Motor Tilt Plate		1
41	HBS916W-41	Limit Switch Plate		1
42	TS-1550061	Washer	M8	2
43	TS-1490031	Hex Cap Bolt	M8x20	2
44	TS-1482021	Hex Cap Screw	M6x12	6
45	HBS916W-45	Cut Off Limit Switch (SQ1)		1
47	HBS1018W-47A	Cylinder Pin		1
48	HBS916W-48	C-Ring	S-20	1
49	HBS916W-49	C-Ring	S-25	2
51	HBS1018W-51	Hydraulic Cylinder Assembly		1
52	HBS916W-52	Cylinder Pin		1
53	HBS1018W-53	Hydraulic Mounting plate-Top		1
53-1	TS-1551071	Lock Washer	M10	4
53-2	TS-1491041	Hex Cap Bolt	M10x30	2
54	TS-1492051	Hex Cap Bolt	M12x50	2
55	TS-1550081	Washer	M12	2
56	HBS916W-56	Plate		1
57	TS-0561051	Hex Nut	1/2"	2
58	HBS916W-58	Spring Bracket		1
59	HBS916W-59	Adjustable C- Bolt		1

<b>Index No.</b>	<b>Part No.</b>	<b>Description</b>	<b>Size</b>	<b>Qty.</b>
60	HBS1018W-60	Spring		1
62	TS-1492041	Hex Cap Bolt	M12x40	2
63	TS-1551081	Lock Washer (S/N:0202756 and higher)	M12	2
65	HBS916W-64	Vise Jaw-left		1
65-1	MBS1014W-65-1	Extension plate		1
65-2	MBS1014W-65-2	Hex Socket Cap Screw		2
65-3	MBS1014W-65-3	Lock Washer		2
69	TS-15030114	Hex Socket Cap Screw	M6x8	4
69	MBS1014W-69	Hex Socket Cap Screw	M6x30	1
69-1	MBS1014W-69-1	Nut	M6	1
70	HBS916W-70	Electrical Panel Cover		1
	HBS916W-70A	Main Power Switch (QS)		1
71	MBS1014W-71E	Overload Relay (FR)		1
72	MBS1014W-72E	Magnetic Switch (KM1,KM2)	400V,50Hz,3Ph	1
73	MBS1014W-73E	Transformer (TR)	400V,50Hz,3Ph	1
74	HBS916W-74	Transformer Strip		1
75	HBS916W-75	Handle		1
76	TS-1534051	Pan Head Screw	M6x16	4
77	TS-1482021	Hex Cap Bolt	M6x12	2
77-1	TS-1551041	Lock Washer	M6	2
77-2	TS-1550041	Washer	M6	2
78	HBS916W-78	Wire Brush Guard		1
79	TS-1503011	Hex Socket Cap Screw	M6x8	12
	HBS1018W-79A	Adjustable Bracket Mount-rear (not shown)		1
80	HBS1018W-80	Blade wheel Cover-right		1
81	TS-1550041	Washer	M6	4
82	HBS916W-82	Bushing		1
83	HBS916W-83	Washer		1
84	MBS1014W-84	Driver Wheel		1
85	MBS1014W-85E	Blade (local purchase)		1
86	HBS916W-86	Hose		1
87	TS-1533031	Pan Head Screw	M5x10	2
88	HBS916W-88	Filter Screen		1
89	TS-1492031	Hex Cap Bolt	M12x35	5
89-1	TS-1551081	Lock Washer	M12	4
90	HBS916W-90	Lock Knob		4
92	HBS1018W-92	Blade Wheel Box -right		1
93	HBS1018W-93	Connector		1
94	HBS1018W-94	Gear Box Assembly		1
95	HBS916W-95	Key	7mm	2
96	HBS1018W-96	Pulley Cover		1
96-1	HBS916W-96-1	Hex Cap Bolt	1/4x13	1
97	HBS1018W-97	Gear Box Pulley		1
98	VB-A37	V-Belt		1
99	HBS1018W-99	Motor Pulley		1

<b>Index No.</b>	<b>Part No.</b>	<b>Description</b>	<b>Size</b>	<b>Qty.</b>
100	TS-1482031	Hex Cap Bolt	M8x16	4
100-1	TS-1550061	Washer	M8	2
100-2	TS-1551061	Lock Washer	M8	2
101	HBS916W-101	Hose		1
101-1	HBS916W-101-1	Hose		1
102	HBS916W-102	Support Shaft		1
102-1	TS-1550081	Washer	M12	1
102-2	TS-1540081	Hex Nut	M12	1
103	TS-1492021	Hex Cap Bolt (S/N:0202756 and higher)	M12x20	1
104	HBS916W-104	Motor Mount Bracket		1
105	HBS1018W-105A	Column		1
106	TS-1506011	Hex Socket Cap Screw	M12x20	6
107	HBS916W-107	Locking Hand		1
108	TS-1550061	Washer	8mm	1
109	TS-1490081	Hex Cap Bolt	M8x45	4
109-1	TS-1550061	Washer	M8	4
110	HBS916W-110	Motor Mount Plate		1
111	MBS1014W-111AE	Motor (M1)	400V,50Hz,3Ph	1
112	TS-1550061	Washer	M8	4
112-1	TS-1551061	Lock Washer	M8	4
113	TS-1540061	Hex Nut	M8	4
114	HBS916W-114	Key	7mm	1
115	TS-1550081	Washer	M12	1
116	TS-1504041	Hex Socket Cap Screw	M8x20	1
117	HBS1018W-117A	Blade Wheel cover-left		1
118	BB-608VV	Ball Bearing		2
119	TS-1492011	Hex Cap Bolt	M12x25	2
120	TS-1550081	Washer	M12	1
121	BB-6205Z	Ball Bearing		3
122	MBS1014W-122	Idler Wheel		1
123	HBS1018W-123A	Blade Guard		1
123-1	TS-1550061	Washer	M8	1
123-2	TS-1551061	Lock Washer	M8	1
123-3	TS-1490021	Hex Cap Bolt	M8x16	1
124	HBS916W-124	Guide Bracket-left		1
	HBS916W-124A	Guide Bracket Assembly-left		1
124-1	TS-1504031	Hex Socket Cap Screw	M8x16	6
125	TS-1540061	Washer	M8	4
126	BB-6201VV	Ball Bearing		8
127	HBS916W-127	Eccentric Sleeve		2
127-1	HBS1018W-127-1	Sleeve (not shown)		2
128	TS-1551061	Lock Washer	M8	4
129	TS-1504091	Hex Socket Cap Screw	M8x45	4

<b>Index No.</b>	<b>Part No.</b>	<b>Description</b>	<b>Size</b>	<b>Qty.</b>
130	TS-1503071	Hex Socket Cap Screw	M6x30	4
130-1	TS-1550041	Washer	M6	8
131	HBS916W-131	Blade Guide		4
132	TS-1504081	Hex Socket Cap Screw	M8x40	4
133	TS-1551081	Lock Washer	M8	4
133-1	TS-1550081	Washer	M8	4
134	HBS1018W-134A	Adjustable Bracket		1
135	HBS1018W-135E	Scale		1
136	TS-1505031	Hex Socket Cap Screw	M10x25	2
137	HBS1018W-137	Slide		1
138	HBS1018W-138	Blade Bracket-left		1
139	TS-1492021	Hex Cap Bolt	M12x30	4
139-1	TS-1551081	Lock Washer	M12	4
141	MBS1014W-141	Knob		2
143	TS-1524021	Set Screw	M8x10	4
144	HBS1018W-144	Blade Bracket-right		1
145	TS-1482011	Hex Cap Bolt	M6x10	1
146	TS-1550041	Washer	M6	1
147	HBS916W-147	Wire Brush		1
148	HBS916W-148	Wire Brush Rod		1
149	HBS1018W-149	Guide Bracket-right		1
	HBS1018W-149A	Guide Bracket Assembly-right		1
150	HBS916W-150	Spring		1
152	TS-1540071	Hex Nut	M10	2
154	HBS1018W-154A	Adjustable Bracket-right		1
155	TS-1540081	Hex Nut	M12	1
156	TS-1492061	Hex Cap Bolt	M12x60	1
157	HBS1018W-157A	Blade Guard		1
157-1	HBS1018W-157-1	Blade Guard-down		1
158	HBS916W-158	Lock Knob		2
159	TS-1523021	Set Screw	M6x8	1
160	HBS916W-160	Adjustable Valve		2
160-1	HBS916W-160-1	Clamp		2
160-2	TS-1551041	Lock Washer	M6	4
160-3	TS-1482021	Hex Cap bolt	M6x12	4
161	HBS916W-161	Power Indicator Light		1
162	HBS916W-162	Start Switch (SB3)		1
163	HBS916W-163	Emergency Stop Switch (SB1,SB2)		1
164	HBS916W-164	Pump Switch (SA1)		1
165N	HBS916W-165N	Feed Control-On/off Valve		1
	HBS916W-165N-1	Plate (not shown) (S/N: 91248& higher 1014W)		1
166	HBS916W-166	Connecting Tube		1
166-1	HBS916W-166-1	Hose Clamp		3
168	HBS916W-168	Control Box		1
169	HBS916W-169	Control Panel		1
170	TS-1533031	Pan Head Screw	M5x10	6
171	HBS1018W-171	Wheel Box-left		1
172	HBS916W-172	Handle		1
173	TS-1540081	Hex Nut	M12	2
175	TS-1533031	Pan Head Screw	M5x10	2
176	HBS916W-176	Indicator Scale		1
177	HBS916W-177	Slide Bracket		1

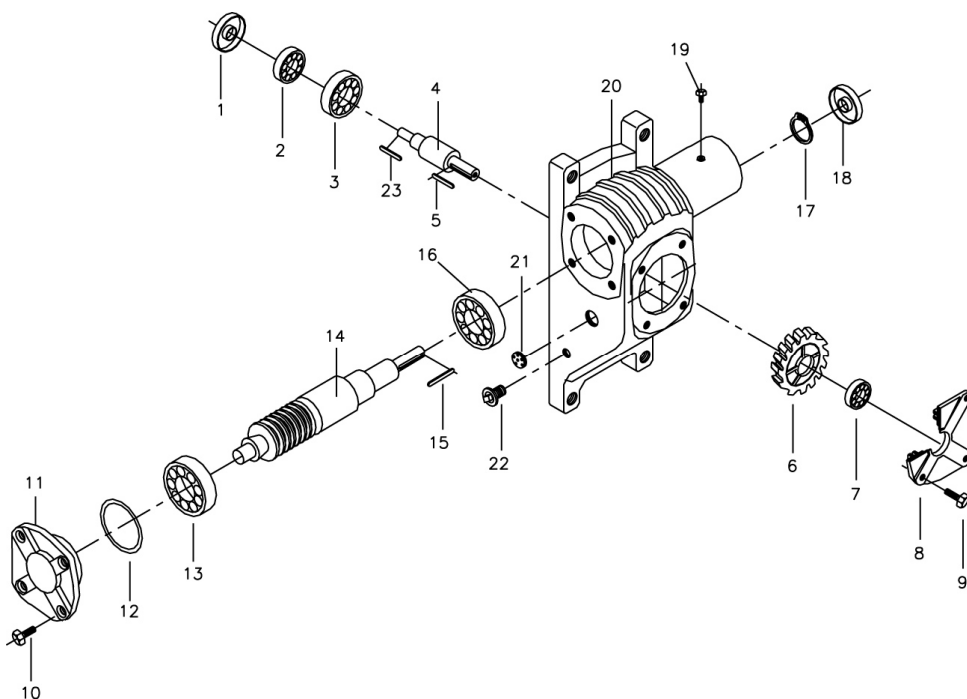
<b>Index No.</b>	<b>Part No.</b>	<b>Description</b>	<b>Size</b>	<b>Qty.</b>
178	HBS916W-178	Tension Shaft		1
179	HBS916W-179	Key	5mm	1
180	HBS916W-180	Handwheel		1
181	HBS916W-181	Lock Washer	M22	13
182	HBS916W-182	Flat Steel Washer		1
183	HBS916W-183	Tension Indicator		1
184	BB-51104	Thrust Bearing		1
187	HBS916W-187	Slide		1
188	TS-1524021	Set Screw	M8x10	2
189	HBS916W-189	Extension Bar		1
190	HBS916W-190	Wheel Shaft		1
191	TS-1540081	Hex Nut	M12	1
191-1	TS-1523021	Set Screw	M6x8	3
192	TS-1504051	Hex Socket Cap Screw	M8x25	4
192N	TS-1503021	Hex Socket Cap Screw	M6x12	2
193	TS-1492011	Hex Socket Cap Screw	M12x25	1
194	HBS916W-194	Gib		2
195	HBS916W-195	Hex Cap Screw (re: HBS916W-196)		3
196	HBS916W-196	Screw Assembly		3
196-1	HBS916W-196-1	Lock Washer (re: HBS916W-196)		3
197	HBS916W-197	Hose Fitting		1
198	HBS916W-198	Hose Clamp		1
199	HBS916W-199	Hose Clamp		1
202	MBS1014W-202	Power Cord	H07RNF-4G 1.0m	1
206	HBS916W-206	Speed Chart Label		1
207	HBS916W-207	Hose		1
208	HBS916W-208	Hose		1
213	TS-1550071	Washer	M10	5
214	HBS1018W-214	Clamp		2
215	HBS1018W-215	Connector		2
216	MBS1014W-216	Fixed Vise Jaw		1
217	MBS1014W-217	Cotter Pin		1
218	MBS1014W-218	Spring Cover		1
219	MBS1014W-219	Adjustable Handle		1
220A	MBS1014W-220A	Support (S/N:0202756 and higher)		1
221	MBS1014W-221	Adjustable Handle		1
222	MBS1014W-222	Bracket		1
223	MBS1014W-223	Bracket		1
224	MBS1014W-224	Slide		1
225	MBS1014W-225	Guide Plate		1
226	MBS1014W-226	Turing Slide		1
226A	MBS1014W-226A	Scale		1
227	MBS1014W-227	Bracket		1
228	BB-51106	Thrust Bearing (S/N:0202755 and lower)		1
231A	MBS1014W-231A	Turning Slide (S/N:0202756 and higher)		1
232	MBS1014W-232	Turn Plate		1
233	MBS1014W-233	Coolant Pump Bracket		1
234	TS-1491061	Hex Cap Bolt	M10x40	3
235	TS-1482041	Hex Socket Cap Screw	M6x20	6



Index No.	Part No.	Description	Size	Qty.
236	MBS1014W-236	Washer		1
237	MBS1014W-237	Lock Knob		1
238	MBS1014W-238	Brass Fitting		2
239	TS-1524041	Set Screw	M8x16	1
240	TS-1550101	Washer	M16	2
241	MBS1014W-241	Stop Rod		1
242	MBS1014W-242	Panel Cover		1
243	TS-1491031	Hex Cap Bolt		2
244	MBS1014W-244	ID Label, Warning Label (not shown)		1
245N	MBS1014W-245N	Slide Bracket (S/N:01021647 and higher)		1
246N	MBS1014W-246N	Lead Screw Bracket (S/N:01021647 and higher)		1
247N	MBS1014W-247N	Rack Block (S/N:01021647 and higher)		1
248N	MBS1014W-248N	Rack (S/N:01021647 and higher)		1
248N-1	MBS1014W-248N-1	Bushing		1
248N-2	TS-1503041	Hex Socket Cap Screw	M6x25	1
248N-3	TS-1551041	Lock Washer	M6	1
249	MBS1014W-249	Pin		1
250	MBS1014W-250	Pin	4x16	1
251	MBS1014W-251E	Pin		2
252	MBS1014W-252E	Grounding Plate		1
253	MBS1014W-253E	General Switch		1
254	MBS1014W-254E	Fuse (F11,FU2)	2A	2
254-1	MBS1014W-254-1E	Fuse (FU3)	3A	1
255	MBS1014W-255E	Flexible Set Ring		1
256	MBS1014W-256E	Set Screw	M8x10	2
257	MBS1014W-257E	Blade Breakage Limit Switch (SQ5)	1307	1
258	MBS1014W-258E	Washer	M4	2
259	MBS1014W-259E	Round Head Screw	5/32"x1"	2
260	MBS1014W-260E	Cover		1
261	MBS1014W-261E	Hex Cap Bolt	M6x12	2
262	MBS1014W-262E	Spring Washer	M6	2
263	MBS1014W-263E	Washer	M6	2
264	MBS1014W-264E	Relief Bushing		1
265	MBS1014W-265E	Electrical Wire		1
266	MBS1014W-266E	Eccentric Shaft		2
266-1	MBS1014W-266-1E	Set Screw	M6x8	2
267	MBS1014W-267E	Wheel Cover Limit Switch (SQ1,SQ2)		2
268	MBS1014W-268E	Round Head Screw	5/32x32	4
269	MBS1014W-269E	Limit Switch Guard		2
270	MBS1014W-270E	Round Head Screw	M5x10	4
271	MBS1014W-271E	Belt Cover Safety Limit Switch (SQ4)		1
272	MBS1014W-272E	Round Head Screw	5/32x32	2
273	MBS1014W-273E	Limit Switch Plate		1
274	MBS1014W-274E	Hex Cap Bolt	M6x12	2
275	MBS1014W-275E	Lock Washer	M6	2

### Gear Reduce Box Assembly

Index No.	Part No.	Description	Size	Qty.
1	HBS916W-94-01	Oil Seal	35 × 55 × 8	1
2	HBS916W-94-02	Bearing	30207	1
3	HBS916W-94-03	Bearing	6207	1
4	HBS916W-94-04	Shaft		1
5	HBS916W-94-05	Key	8 × 7 × 30	1
6	HBS916W-94-06	Gear Wheel		1
7	HBS916W-94-07	Bearing	6206	1
8	HBS916W-94-08	Output Shaft Cover		1
9	HBS916W-94-09	Output Hex Cap Screw	M10 × 20	4
10	HBS916W-94-10	Input Hex Cap Screw	M8 × 20	4
11	HBS916W-94-11	Input Shaft Cover		1
12	HBS916W-94-12	Washer		1
13	HBS916W-94-13	Bearing	30205	1
14	HBS916W-94-14	Input Shaft		1
15	HBS916W-94-15	Key		1
16	HBS916W-94-16	Bearing	6205	1
17	HBS916W-94-17	C-ring	R52	1
18	HBS916W-94-18	Oil Seal	25 × 52 × 8	1
19	HBS916W-94-19	Vent Bolt		1
20	HBS916W-94-20	Gear Box		1
21	HBS916W-94-21	Oil Lens		1
22	HBS916W-94-22	Draw Plug		1
23	HBS916W-94-23	Key	7 × 7 × 45	1



# MBS-1014W

## 414477T 400/50/3

	colour of strands	Litzenfarben	couleur des cordons
BK	black	schwarz	noir
WH	white	weiß	blanc
BU	blue	blau	bleu
YE	yellow	gelb	jaune
RD	red	rot	rouge
BN	brown	braun	brun
GY	grey	grau	gris
GNYE	green-yellow	grün-gelb	vert-jaune
OG	orange	orange	orange
VT	violet	violett	violet

	meaning of symbol	Bedeutung der Zeichen	interprétation
M1	main motor	hauptmotor	moteur principal
M2	Coolant pump	Kühlmittelpumpe	Pompe de liquide réfrigérant
QS	main power switch	türschalter	interrupteur de port
FU1	ac fuse to transformer	sicherung	fusible
FU2	ac low voltage to transformer	sicherung	fusible
FU3	ac low voltage to transformer	sicherung	fusible
KM1	contractors	schütz	contacteur
FR	overload relay	überlastschuttschalter	déclencheur surcharge
TR	transformer	transformator	transformateur
SQ1	cut- off limit switch	positionsendschalter	micro
SQ1	limit switch wheel box cover	positionsendschalter	micro
SQ2	limit switch of pulley cover	positionsendschalter	micro
SQ4	Blade breakage switch	Blattbruch Endschalter	Commutateur de rupture de lame
SQ5	emergency stop switch	not-aus schalter	arrêt d'urgence
SB1	stop off	aus-schalter	bouton arrêt
SB2	start on	ein-schalter	bouton marche
SB3	pump switch	kühlmittel-schalter	commutateur pompe

