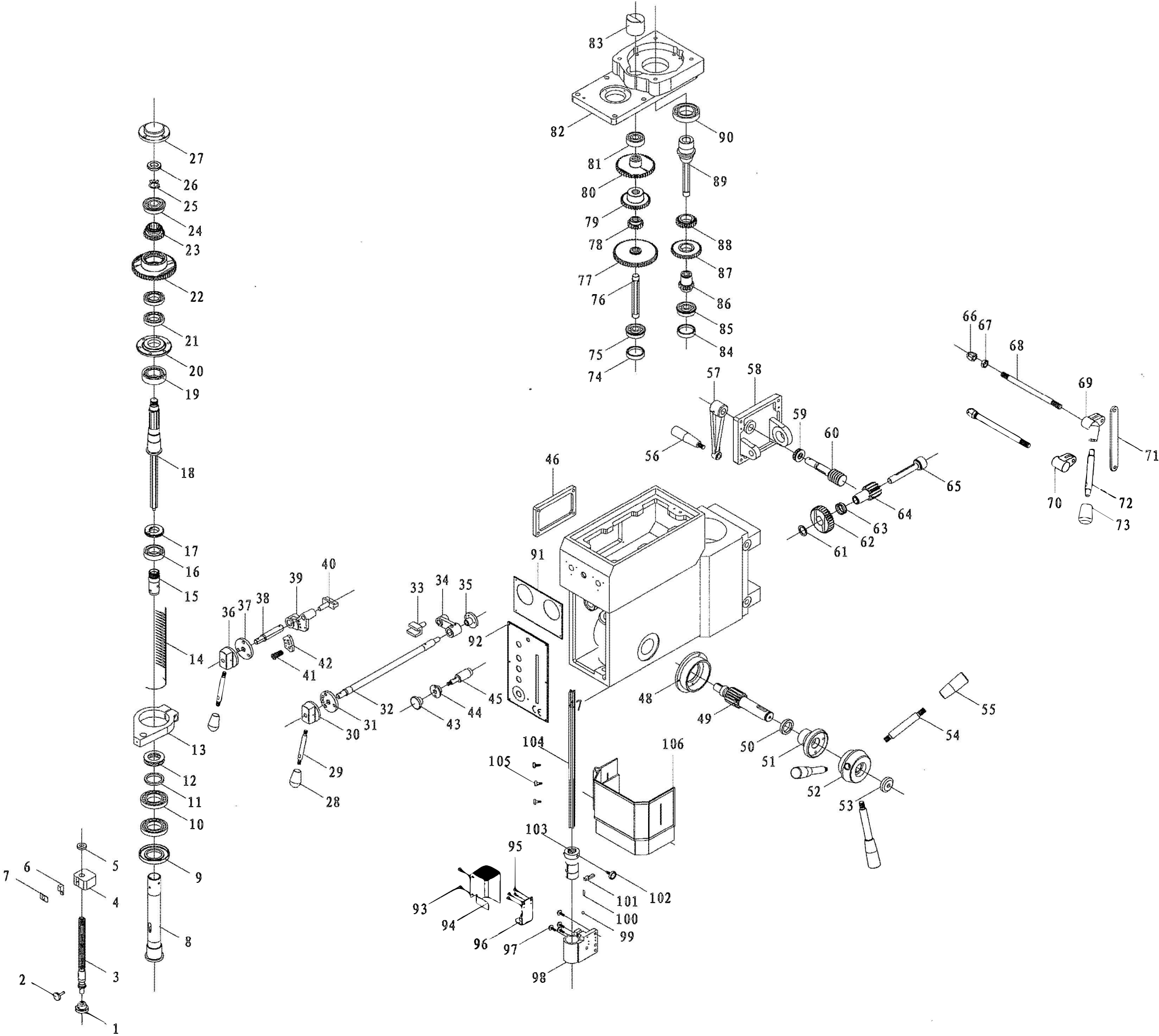


# Parts Breakdown For GHD-25 Drill Press Drawing (1)



**Part List for GHD-25 DRILL PRESS**

<b>No.</b>	<b>Part no.</b>	<b>Description</b>	<b>Size</b>	<b>Qty.</b>
1	GHD25-1-001	Knurled nob		1
2	GHD25-1-002	Knurled screw bolt		1
3	GHD25-1-003	Scaled screw		1
4	GHD25-1-004	Scaled nut		1
5	GHD25-1-005	Positioning block		1
6	GHD25-1-006	Support for the indicator		1
7	GHD25-1-007	Scaled indicator sheet		1
8	GHD25-1-008	Spindle		1
9	GHD25-1-009	Spindle cover		1
10	GHD25-1-010	Bearing		2
11	GHD25-1-011	Washer		1
12	GHD25-1-012	Bearing		1
13	GHD25-1-013	Scaled clamper		1
14	GHD25-1-014	Spindle quill		1
15	GHD25-1-015	Spline quill		1
16	GHD25-1-016	Bearing		1
17	GHD25-1-017	Nut		1
18	GHD25-1-018	Transmission shaft		1
19	GHD25-1-019	Bearing		1
20	GHD25-1-020	Bearing cover		1
21	GHD25-1-021	Bearing		1
22	GHD25-1-022	Gear(8)		1
23	GHD25-1-023	Gear(9)		1
24	GHD25-1-024	Bearing		1
25	GHD25-1-025	Washer	18	1
26	GHD25-1-026	Nut		1
27	GHD25-1-027	Bearing cover		1
28	GHD25-1-028	Knob		2
29	GHD25-1-029	Lever		2
30	GHD25-1-030	Lever seat		1
31	GHD25-1-031	Positioning Washer		1
32	GHD25-1-032	Fork shaft		1
33	GHD25-1-033	Fork		1
34	GHD25-1-034	Right Lever		1
35	GHD25-1-035	Bushing		1
36	GHD25-1-036	Lever seat		1
37	GHD25-1-037	Positioning washer		1
38	GHD25-1-038	Fork shaft		1
39	GHD25-1-039	Left lever		1
40	GHD25-1-040	Block		1
41	GHD25-1-041	Sleeve		1
42	GHD25-1-042	Positioning block		1
43	GHD25-1-043	Knurled handle		1
44	GHD25-1-044	Bushing		1
45	GHD25-1-045	Positioning shaft		1
46	GHD25-1-046	Cover		1
47	GHD25-1-047	Spindle box		1

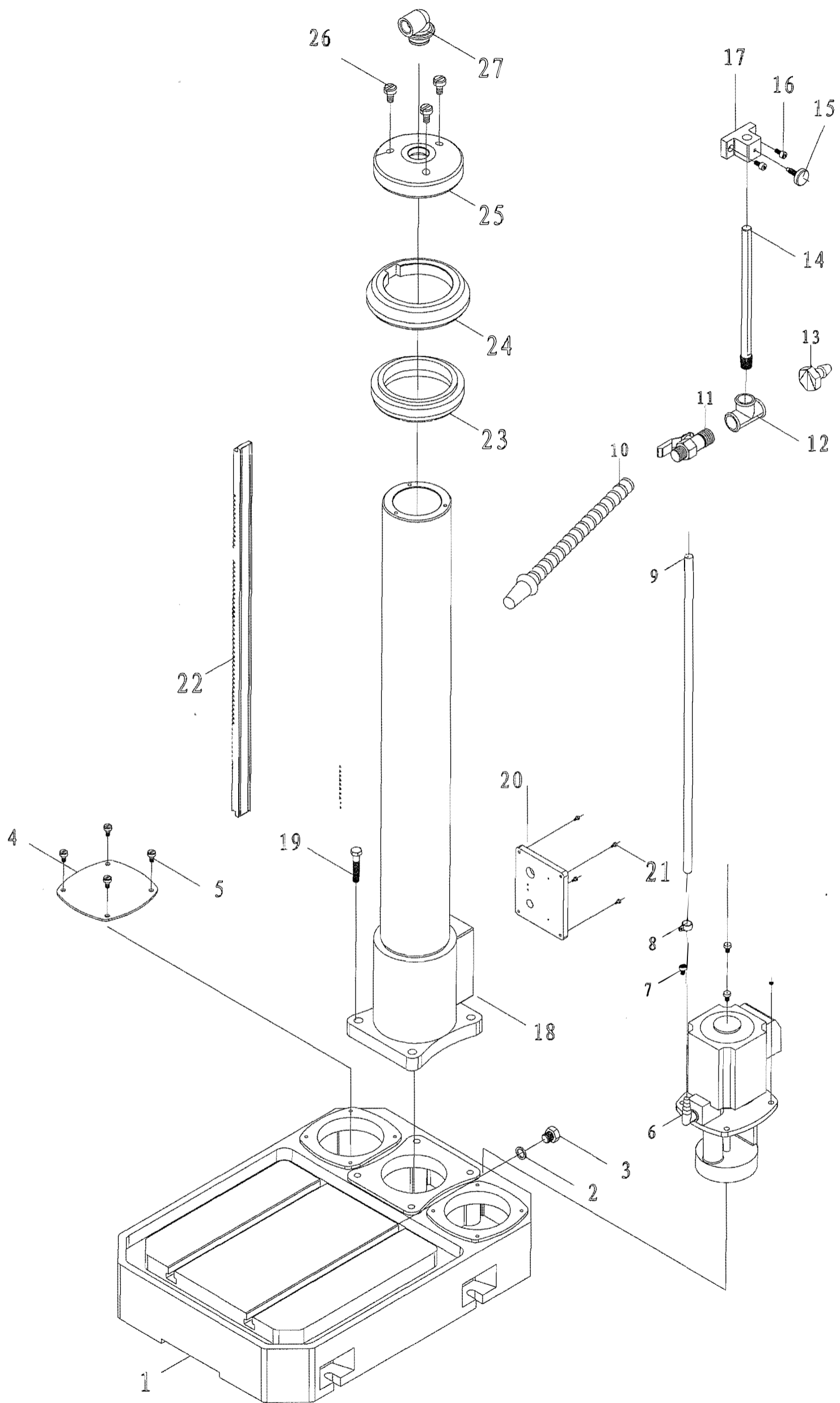
**Part List for GHD-25 DRILL PRESS**

<b>No.</b>	<b>Part no.</b>	<b>Description</b>	<b>Size</b>	<b>Qty.</b>
48	GHD25-1-048	Spring box		1
49	GHD25-1-049	Shaft		1
50	GHD25-1-050	Washer		1
51	GHD25-1-051	Shaft quill		1
52	GHD25-1-052	Lever seat		1
53	GHD25-1-053	Cover		1
54	GHD25-1-054	Feed lever		3
55	GHD25-1-055	Nob		3
56	GHD25-1-056	Turning lever		1
57	GHD25-1-057	Lifting lever of bracket		1
58	GHD25-1-058	Lifting seat		1
59	GHD25-1-059	Bearing		1
60	GHD25-1-060	Lifting worm		1
61	GHD25-1-061	Washer		1
62	GHD25-1-062	Lifting worm for spindle box		1
63	GHD25-1-063	Quill		1
64	GHD25-1-064	Gear		1
65	GHD25-1-065	Shaft		1
66	GHD25-1-066	Cover type nut	M12	2
67	GHD25-1-067	Hex thin nut	M12	2
68	GHD25-1-068	Double end bolt		2
69	GHD25-1-069	Lever seat		1
70	GHD25-1-070	Nut		1
71	GHD25-1-071	Connecting board		1
72	GHD25-1-072	Hand lever		1
73	GHD25-1-073	Hand sleeve		1
74	GHD25-1-074	Cover		1
75	GHD25-1-075	Bearing		1
76	GHD25-1-076	II shaft		1
77	GHD25-1-077	Gear(5)		1
78	GHD25-1-078	Gear(1)		1
79	GHD25-1-079	Gear(6)		1
80	GHD25-1-080	Gear(7)		1
81	GHD25-1-081	Bearing		1
82	GHD25-1-082	Box cover		1
83	GHD25-1-083	Bearing quill		1
84	GHD25-1-084	Cover		1
85	GHD25-1-085	Bearing		1
86	GHD25-1-086	Gear(2)		1
87	GHD25-1-087	Gear (4)		1
88	GHD25-1-088	Gear(3)		1
89	GHD25-1-089	I Shaft		1
90	GHD25-1-090	Bearing		1
91	GHD25-1-091	Speed label		1
92	GHD25-1-092	Operation label		1
93	GHD25-1-093	Slotted cheese-head screw	M4X30	2
94	GHD25-1-094	Cover		1

**Part List for GHD-25 DRILL PRESS**

<b>No.</b>	<b>Part no.</b>	<b>Description</b>	<b>Size</b>	<b>Qty.</b>
95	GHD25-1-095	Slotted cheese head screws	M4X8	4
96	GHD25-1-096	Mounting plate		1
97	GHD25-1-097	Slotted cheese head screws	M6X12	4
98	GHD25-1-098	Holder		1
99	GHD25-1-099	Steel ball	6	1
100	GHD25-1-100	Pin		1
101	GHD25-1-101	Lever		1
102	GHD25-1-102	Screw		1
103	GHD25-1-103	Sleeve		1
104	GHD25-1-104	Supporting bar		1
105	GHD25-1-105	Slotted countersunk headscrew	M5X12	2
106	GHD25-1-106	Protection guard		1

# Parts Breakdown For GHD-25 Drill Press Drawing (2)



### Part List for GHD-25 DRILL PRESS

No.	Part no.	Descirption	Size	Qty.
1	GHD25-2-01	Base		1
2	GHD25-2-02	Retainer ring	16	1
3	GHD25-2-03	Oil plug	M16X1.5	1
4	GHD25-2-04	Cover plate		1
5	GHD25-2-05	Screw	M6X10	4
6	GHD25-2-06	Cooling pump	0.18kW	1
7	GHD25-2-07	Slotted cheese head screws	M6X20	4
8	GHD25-2-08	Hose clamp		1
9	GHD25-2-09	Hose	Ø10X1500	1
10	GHD25-2-10	Cooling pipe	L=400	1
11	GHD25-2-11	Ball valve		1
12	GHD25-2-12	Tee		1
13	GHD25-2-13	Pipe joint		1
14	GHD25-2-14	Adjusting bracket		1
15	GHD25-2-15	Screw		1
16	GHD25-2-16	Hexagon socket head cap screws	M6X14	2
17	GHD25-2-17	Supporting		1
18	GHD25-2-18	Column		1
19	GHD25-2-19	Screw	M12X40	4
20	GHD25-2-20	Electrical box door		1
21	GHD25-2-21	Screw	M4X12	1
22	GHD25-2-22	Rack		1
23	GHD25-2-23	Sleeve with steel ball		1
24	GHD25-2-24	Baffle ring		1
25	GHD25-2-25	Cover		1
26	GHD25-2-26	Screw	M6X16	3
27	GHD25-2-27	Elbow pipe with shaft ring		1