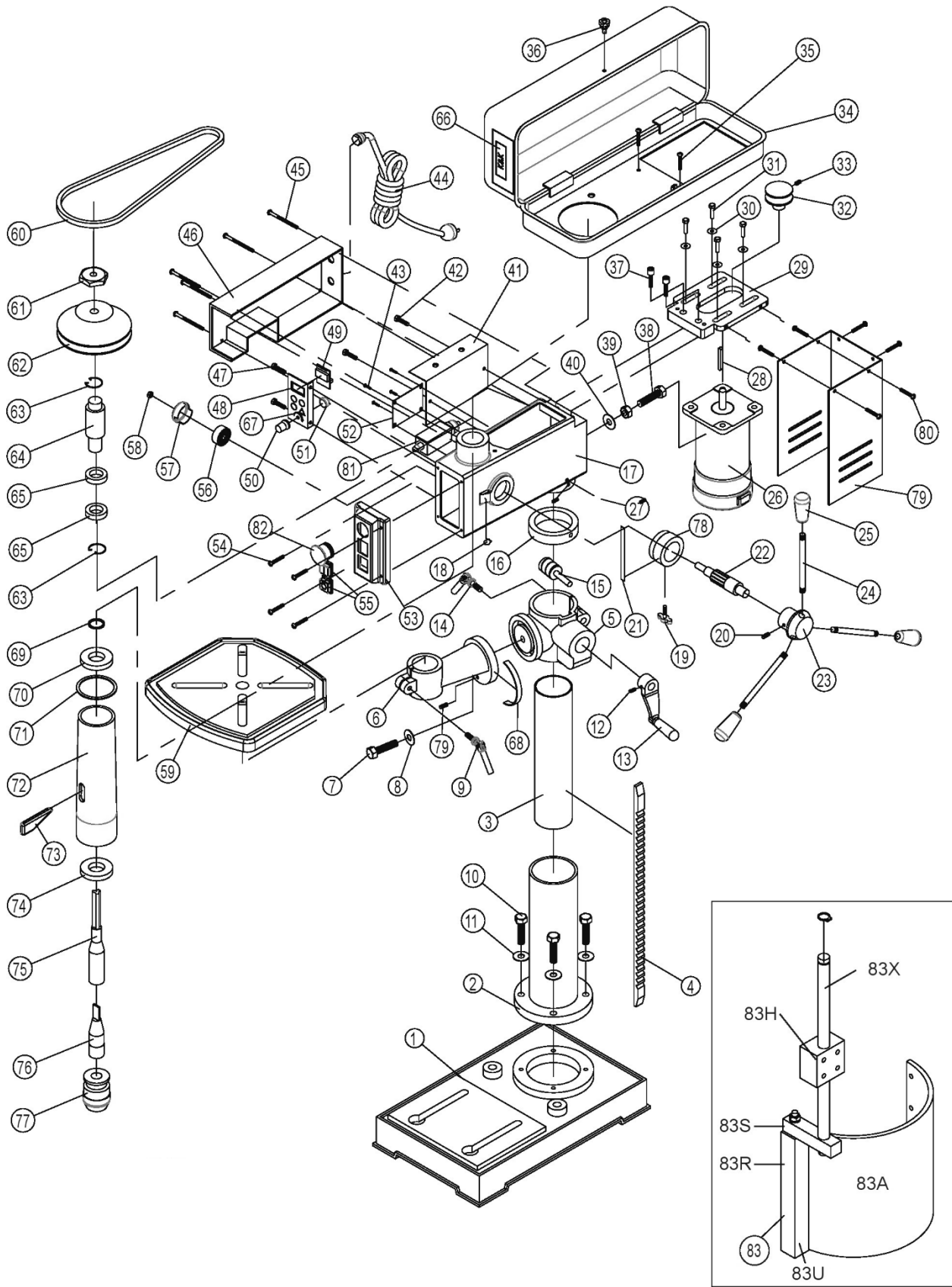


IDP-15BV Drill Press – Exploded View

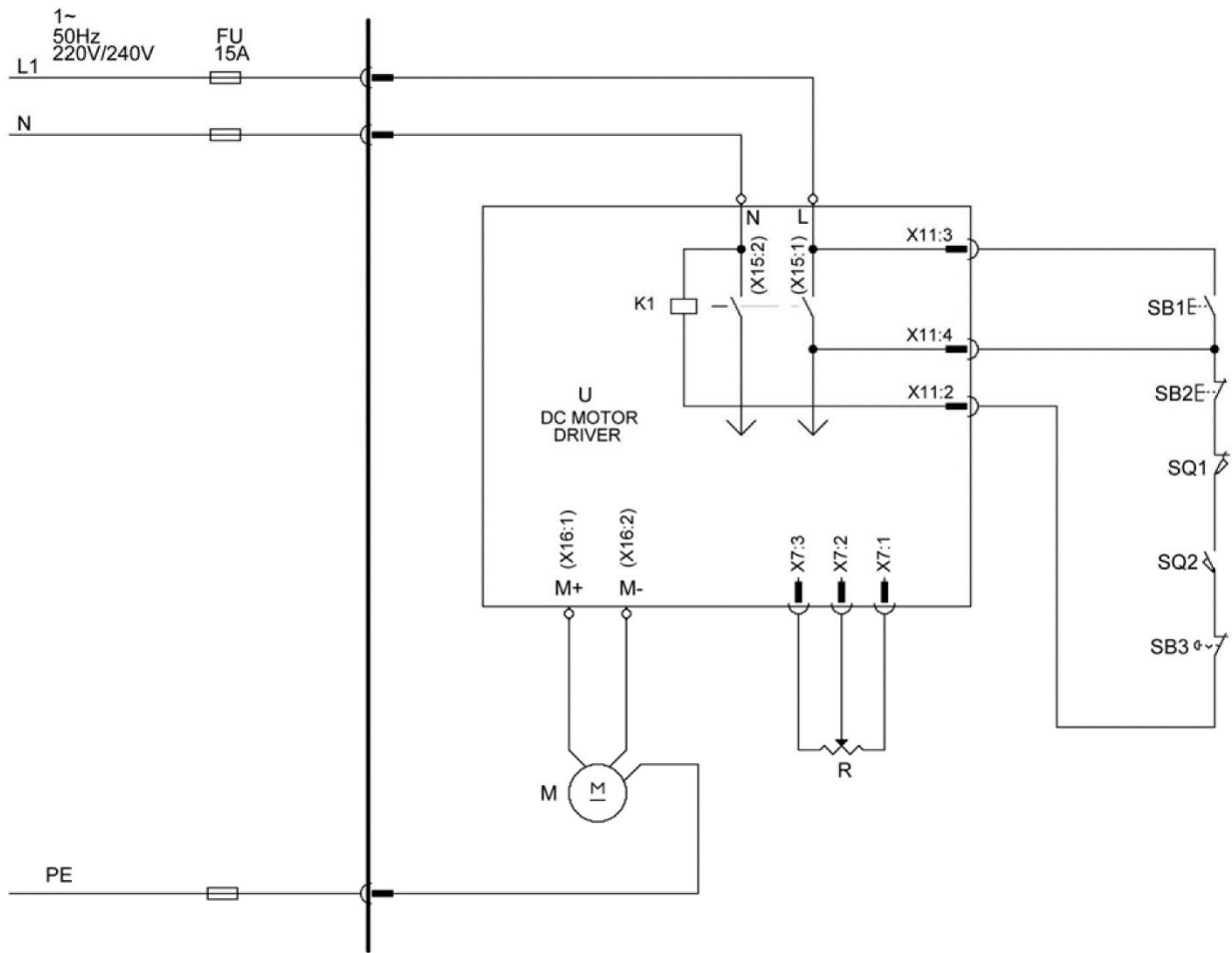


IDP-15BV Drill Press – Parts List

Index No	Part No	Description	Size	Qty
1	PM-212V001	Base Plate	Ø140	1
2-3	PM-212V002	Column Ass'y	Ø73	1
4	PM-212V004	Rack	520 L	1
5	PM-212V005	Column Flange	3 分半	1
6	PM-212V006	Table Arm		1
7	PM-212V007	Screw	5/8 x 1-1/4	1
8	PM-212V008	Washer	5/8 x 30 x 3	1
9	PM-212V009	Vise Handle	3/8 x 26	1
10	PM-212V010	Screw	5/16 x 1	4
11	PM-212V011	Spring Washer	5/16	4
12	PM-212V012	Screw	1/4 x 1/4	1
13	PM-212V013	Lever		1
14	PM-212V014	Vise Handle	1/2 x 45	1
15	PM-212V015	Auger	200	1
16	PM-212V016	Clamping Ring	Ø73	1
17	PM-212V017	Housing		1
18	PM-212V018	Arrow		1
19	PM-212V019	Clamping Screw	5/16 x 18	1
20	PM-212V020	Bolt	4 x 20	1
21	PM-212V021	Scale	80 L	1
22	PM-212V022	Feed Shaft	7/16	1
23	PM-212V023	Handle Flange		1
24	PM-212V024	Handle Rod	3T、4T	3
25	PM-212V025	Handle		3
26	PM-212V026	Motor	2HP	1
	PM-212V026-01	Carbon Brush		2
	PM-212V026-02	Terminal To Carbon Brush		2
27	PM-212V027	Screw	5/16 x 3/8	2
28	PM-212V028	Pen	5 x 25	1
29	PM-212V029	Motor Plate		1
30	PM-212V030	Washer	5/16 x 5 x 5	4
31	PM-212V031	Screw	5/16 x 1-1/4	4
32	PM-212V032	Pulley		1
33	PM-212V033	Screw	6 x 8	1
34	PM-212V034	V-Belt Cover		1
35	PM-212V035	Screw	1/4 x 3/8	4
36	PM-212V036	Screw		1
37	PM-212V037	Screw	5/16 x 1	2
38	PM-212V038	Screw	1/2 x 1	1
39	PM-212V039	Nut	1/2	1
40	PM-212V040	Rubber Foot		1
41	PM-212V041	Plate		1
42	PM-212V042	Screw	3/16 x 3/8	1
43	PM-212V043	Screw	3/16 x 3/8	1
44	200034	Power Cord		1
45	PM-212V045	Screw	3/16 x 60 x 6	4
46	PM-212V046	Cover		1
47	PM-212V047	Screw	3/16x 3/8	2
48	PM-212V048	Plate		1
49	PM-212V049	LED Display		1
50	PM-212V050	Handle		1
51	PM-212V051	Speed Controller		1
52	PM-212V052	Electronique Electronics Plate		1
53	PM-212V053	Switch Box		1
54	PM-212V054	Screw	3/16 x 13	4
55	PM-212V055	Switch Button		2
56+57	PM-212V056K	Spring Ass'y		1
58	PM-212V058	Nut	1/2	1
59	PM-212V059	Table	13N	1

Index No	Part No	Description	Size	Qty
60	PM-212V060	Belt	A37	1
61	PM-212V061	Nut	1"LT	1
62	PM-212V062	Pulley		1
63	PM-212V063	Retaining Ring	Ø45	2
64	PM-212V064	Shaft		1
65	PM-212V065	Ball Bearing	6205	2
66	PM-212V066	Plate		1
67	PM-212V067	Plate		1
68	PM-212V068	Scale		1
69	PM-212V069	Retaining Ring	Ø9	1
70	PM-212V070	Ball Bearing	6201	1
71	PM-212V071	Rubber Washer	Ø40	1
63-75	PM-212V072K	Spindle Ass'y		1
73	944477	Wedge		1
74	PM-212V074	Ball Bearing	6204	1
76	100188	Taper Mandrel	MK2/B18	1
77	9473	SS Chuck	1-13mm	1
78	PM-212V078	Flange		1
79	PM-212V079	Cover		1
80	PM-212V080	Screw	3/16 x 3/8	6
81	PM-212V081	Micro Switch		1
82	PM-212V082	Emergency Stop		1
83	PM-212V083	Chip Guard Ass'y		1
83A	PM-212V083A	Glass		1
83H	PM-212V083H	Holder		1
83R	PM-212V083R	Rod Square		1
83S	PM-212V083S	Retaining Ring		1
83U	PM-212V083U	Bracket		1
83X	PM-212V083X	Round Rod		1

Electrical Connections for IDP-15BV



Item designation	Description & function	Maker	Type	Technical data	Making of conformity granted
XP	Plug for supply Three phase	LIAN DUNG	LT-32	10~16A , 250V	
	Supply cable single phase	TIEN TUNG	H05VV-F	3G 1.5mm ² 300/500V	VDE 0620
SB1	Start switch	KM		240V/10A	
SB2	OFF (Emergency- Stop) Switch	KM		240V/10A	
SB3	Emergency- Stop switch	XINQUANG	KB2-BE102	10A	
SQ1	Micro switch	Zhejiang Tiande	CT-103	250V/10A	
SQ2	Micro switch	HIEHLY	CLS-103	220V/10A	