

JET

JRD-460

Radial Arm Drill Press

50001000T...380/50/3

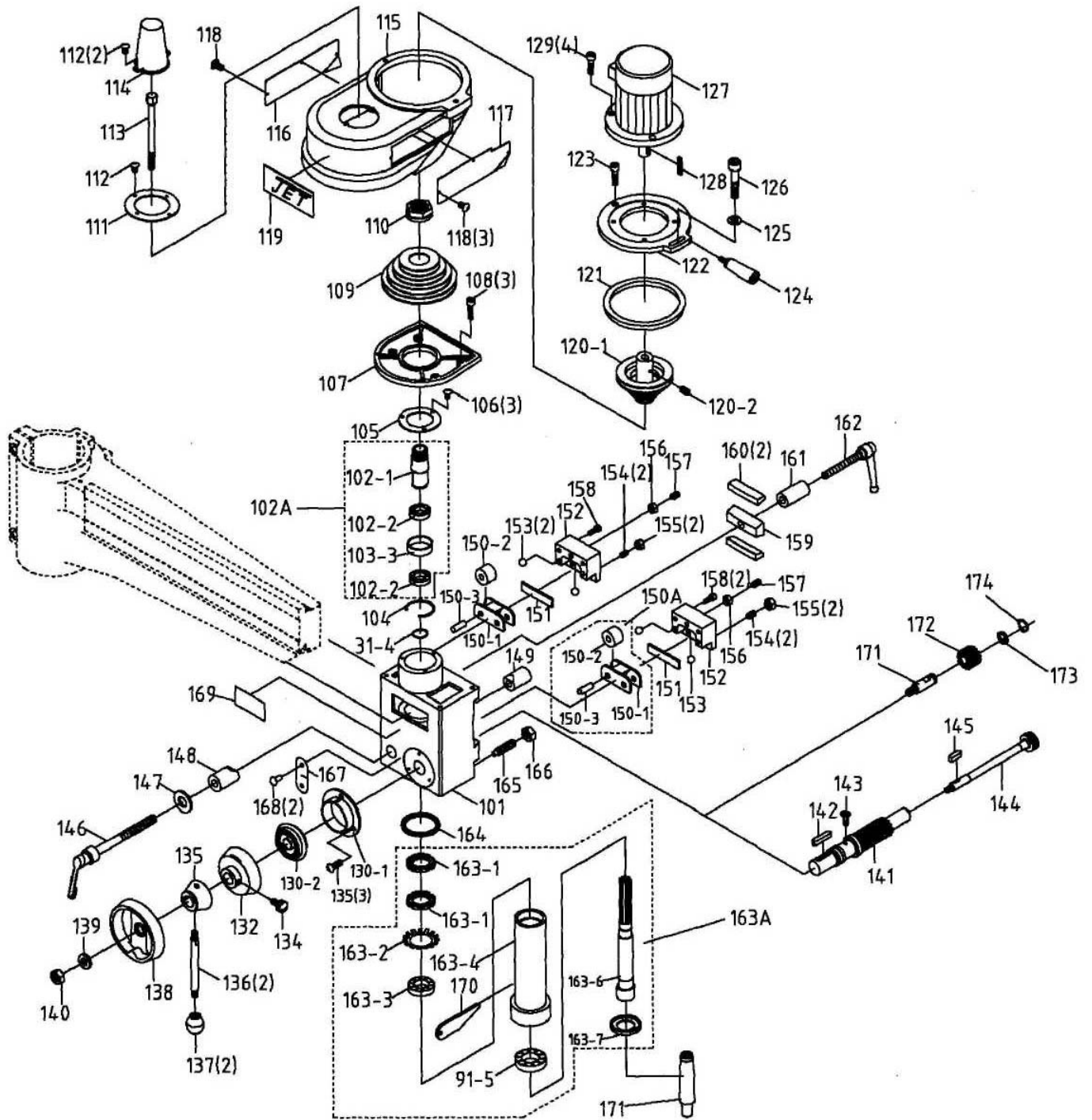
Parts List

WMH Tool Group AG
Bahnstrasse 24,
CH – 8603 Schwerzenbach
www.wmhtoolgroup.ch
info@wmhtoolgroup.ch
Tel +41 (0)44 806 47 48
Fax +41 (0) 44 806 47 58

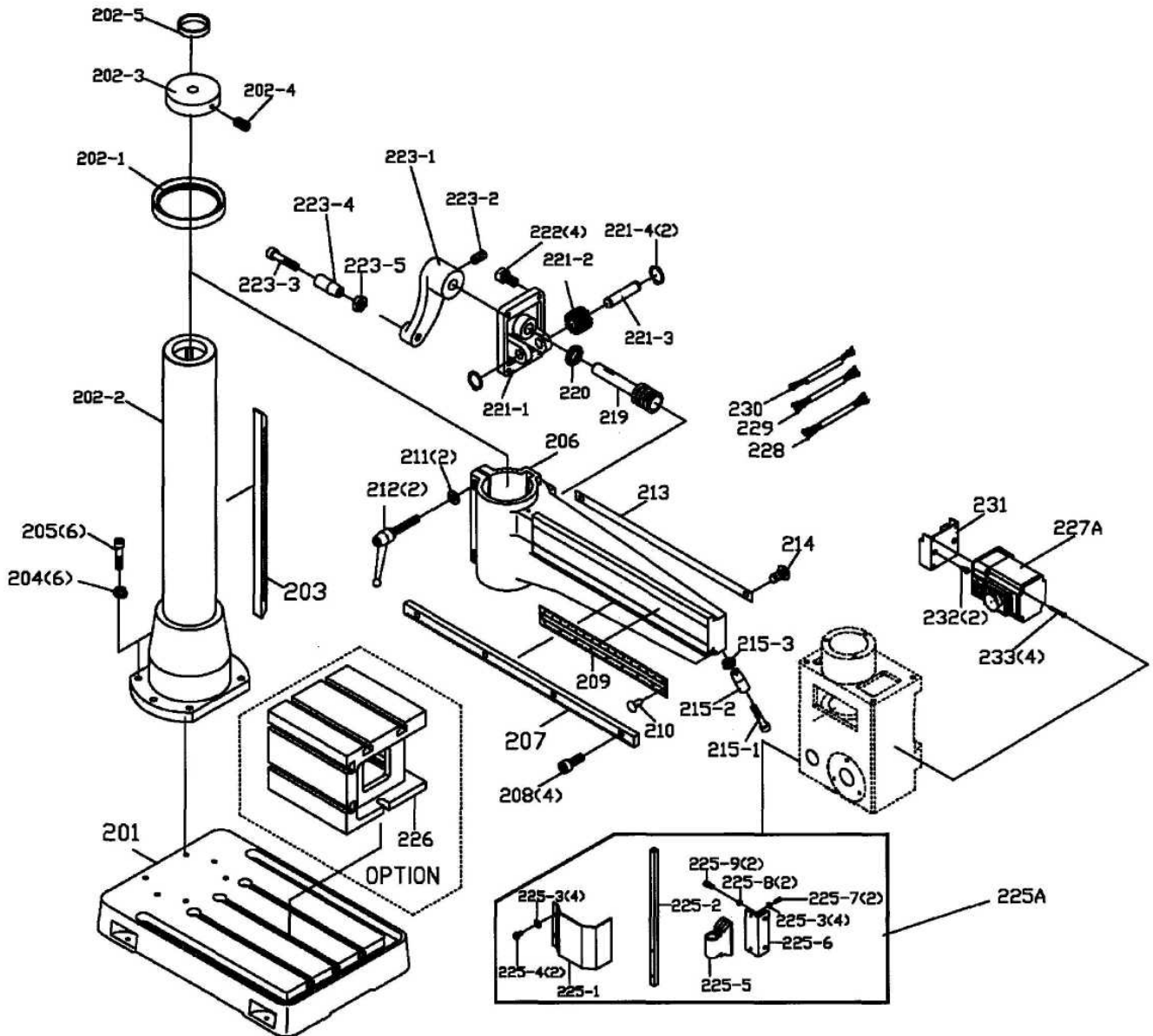
P-50001000...10/08



Breakdown for the JRD-460 Radial Ram Saw Head Assembly



Breakdown for the JRD-460 Radial Ram Saw Table, Arm and Column Assembly



Head Assembly

№	№ детали	обозначение	размер	кол-во
101	JRD460-101	Head Body		1
102A	JRD460-102STA	Spindle Taper Sleeve Assembly		1
102-1	JMD18-006	Spindle Taper Sleeves		1
102-2	BB6009ZZ	Ball Bearing	6009ZZ	2
102-3	JMD18-008	Spacer	Ø 74x Ø 68x22L	1
103	JMD18-023	Fixed Ring	Ø 2x Ø 41	1
104	JRD460-104	C-Retainer Ring	Ø 3x Ø 80	1
105	JRD460-105	Outer Bearing Plate		1
106	TS-1534032	Pan Head Machine Screw	M6x10	3
107	JRD460-107	Cap		1
108	TS-1503051	Socket Head Cap Screw	M6x20	4
109	JRD460-109	Spindle Pulley		1
110	JRD460-110	Spindle Locknut		1
111	JRD460-111	Main Shaft Cover		1
112	TS-1533032	Pan Head Machine Screw	M5x10	4
113	JMD18VS-0001E	Draw Bar	MT-3, M12	1
114	JRD460-114	Shaft Cover		1
115	JRD460-115	Belt Cover		1
116	JRD460-116	Side Plate (left)		1
117	JRD460-117	Side Plate (right)		1
118	JRD460-118	Pan Head Machine Screw	M5x8	6
119	JRD460-119	JET Logo		1
120A	JRD460-120MPA	Motor Pulley Assembly		1
120-1	JRD460-120-1	Motor Pulley		1
120-2	TS-1524021	Socket Set Screw	M8x10	1
121	JRD460-121	Belt	17-330	1
122	JRD460-122	Motor Mount Plate		1
123	TS-1505021	Socket Head Cap Screw	M10x20	1
124	JRD460-124	Locking Handle		1
125	JRD460-125	Flat Washer	Ø 10.5x Ø 27x3t	1
126	TS-1505061	Socket Head Cap Screw	M10x40	1
127	JRD460-127AE	Motor	400V, 3ph, 1-1/2Hp	1
128	JRD460-128	Key	8x7x45	1
129	JRD460-129	Socket Head Cap Screw	M10x27	4
130A	JRD460-130SBA	Spring Base Assembly		1
130-1	JRD460-130-1	Spring Base		1
130-2	JRD460-130-2	Spring		1
131	TS-1533052	Pan Head Machine Screw	M5x16	3
132	JRD460-132E	Scale Ring		1
134	JRD460-134	Zero Set Screw		1
135	JRD460-135	Rod Support Base		1
136	JRD460-136	Handle Rod		2
137	JRD460-137	Knob		2
138	JRD460-138	Hand Wheel		1
139	JRD460-139	Flat Washer	Ø 10x Ø 27x3t	1
140	JRD460-140	Anti-Loose Nut	M10	1
141	JRD460-141	Pinion Shaft		1
142	JRD460-142	Key	5x5x30	1
143	TS-1534041	Flat Head Machine Screw	M5x10	1
144	JRD460-144	Movable Worm Shaft		1
145	JRD460-145	Key	5x5x15	1

Transmission & Head Assembly

№	№ детали	обозначение	размер	кол-во
146	JRD460-146	Locking Lever		1
147	TS-0680061	Flat Washer	1/2"	1
148	JRD460-148	Fixed Tight Collar		1
149	JRD460-149	Fixed Tight Collar with Thread		1
150A	JRD460-150RA	Roller Assembly		2
150-1	JRD460-150-1	Sliding Wheel Base		2
150-2	JRD460-150-2	Roller		4
150-3	JRD460-150-3	Sliding Wheel Arbor		4
151	JRD460-151	Press Board		2
152	JRD460-152	Slide Block		2
153	JRD460-153	Steel Ball	Ø 8	4
154	TS-1523051	Socket Set Screw	M6x16	4
155	TS-1540041	Hex Nut	M6	4
156	TS-1540061	Hex Nut	M8	2
157	JRD460-157	Socket Set Screw	M8x35	2
158	TS-1503091	Socket Head Cap Screw	M6x40	4
159	JRD460-159	Fixed Nut		1
160	JRD460-160	Moveable Fixed Block		2
161	JRD460-161	Lock Handle Bushing		1
162	JRD460-162	Leaf Handle Lever		1
163A	JRD460-163RSA	Rack Sleeve Assembly		1
163-1	JMD18-014	Lock Nut		2
163-2	JMD18-137	Lock Washer		1
163-3	BB-30206	Taper Roller Bearing	E30206J	1
163-4	JMD18-016E	Rack Sleeve	MT-3	1
163-5	BB-30207	Taper Roller Bearing	E302067J	1
163-6	JMD18-017E	Spindle Shaft	MT-3	1
163-7	JMD18-019	Bearing Cap	MT-3	1
164	JMD18-012	Rubber Flange		1
165	JRD456-165	Set Screw	3/8"x38	1
166	TS-0561031	Hex. Nut	3/8"	1
167	JRD460-167	Indicator		1
168	JMD18-204-2	Rivet	Ø 2	2
169	JRD460-169	Speed Chart		1
170	JMD18-012E	Punch Key		1
171	JRD460-171	Gear Shaft		1
172	JRD460-172	Gear		1
173	JRD460-173	Washer	Ø 5x22x1t	1
174	JRD460-174	C-Retainer Ring	S-15	1

Arm & Column Assembly

№	№ детали	обозначение	размер	кол-во
201	JRD460-201	Swivel Base		1
202A	JRD460-202CA	Column Assembly		1
202-1	JRD460-202-1	Column Flange Ring		1
202-2	JRD460-202-2	Column		1
202-3	JRD460-202-3	Column Head		1
202-4	TS-0270021	Socket Set Screw	5/16"x5/16"	1
202-5	JRD460-202-5	House Bushing		1
203	JRD460-203	Rack		1
204	TS-2361121	Lock Washer	M12	6
205	TS-1506071	Socket Head Cap Screw	M12x50	6
206	JRD460-206	Radial Arm		1
207	JRD460-207	Moveable Rack		1
208	TS-1503041	Socket Head Cap Screw	M6x16	4
209	JRD460-209	Scale		1
210	JMD18-204-2	Rivet	Ø 2	2
211	JRD460-211	Flat Washer	Ø 10.5x Ø 27x3t	2
212	JRD460-212	Locking Lever		2
213	JRD460-213	Band Steel		1
214	TS-1534041	Flat Head Machine Screw	M5x10	2
215A	JMD18-201 HA	Handle Assembly		1
215-1	JMD18-201-1	Socket Head Cap Screw	3/8"x3-1/2"	1
215-2	JMD18-201-2	Knob		1
215-3	JMD18-201-3	Hex Nut	3/8"	1
219	JMD18-059	Worm Shaft		1
220	JMD18-114	Bushing		1
221	JRD460-221HRA	Head Raise Assembly		1
221-1	JRD460-221-1	Head Raise Bracket		1
221-2	JRD460-221-2	Worm Gear		1
221-3	JRD460-221-3	Worm Shaft		1
221-4	JRD460-221-4	C-Retainer Ring	S-14	1
222	TS-1503061	Socket Head Cap Screw	M6x25	4
223	JRD460-223UDA	Up-Down Handle Assembly		1
223-1	JRD460-223-1	Head Handle		1
223-2	TS-0271061	Socket Set Screw	3/8"x1/2"	1
223-3	JMD18-201-1	Socket Head Cap Screw	3/8"x3-1/2"	1
223-4	JMD18-022	Handle		1
223-5	TS-0561031	Hex Nut	3/8"	1
225A	JMD45PF-044	Chuck Guard Assembly		1
225-1	JMD45PF-044-1	Chuck Guard		1
225-2	JMD45PF-044-2	Chuck Guard Supporting Rod		1
225-3	TS-2361051	Lock Washer	M5	4
225-4	TS-1502021	Socket Head Cap Screw	M5x10	2
225-5	JMD45PF-044-5	Chuck Guard Bracket		1
225-6	JMD45PF-044-6	Rotary Supporting Base		1
225-7	TS-1502041	Socket Head Cap Screw	M5x16	2
225-8	TS-2361061	Lock Washer	M6	2
225-9	TS-1503041	Socket Head Cap Screw	M6x16	2
227A	JRD460-227AE	Switch Assembly		1
227-1	JRD460-227-1AE	Magnetic Contactor with Overload	KEDU KOA1M	1
227-2	JRD460-227-2AE	Forward and Reverse Switch (not shown)	ZH-D	1

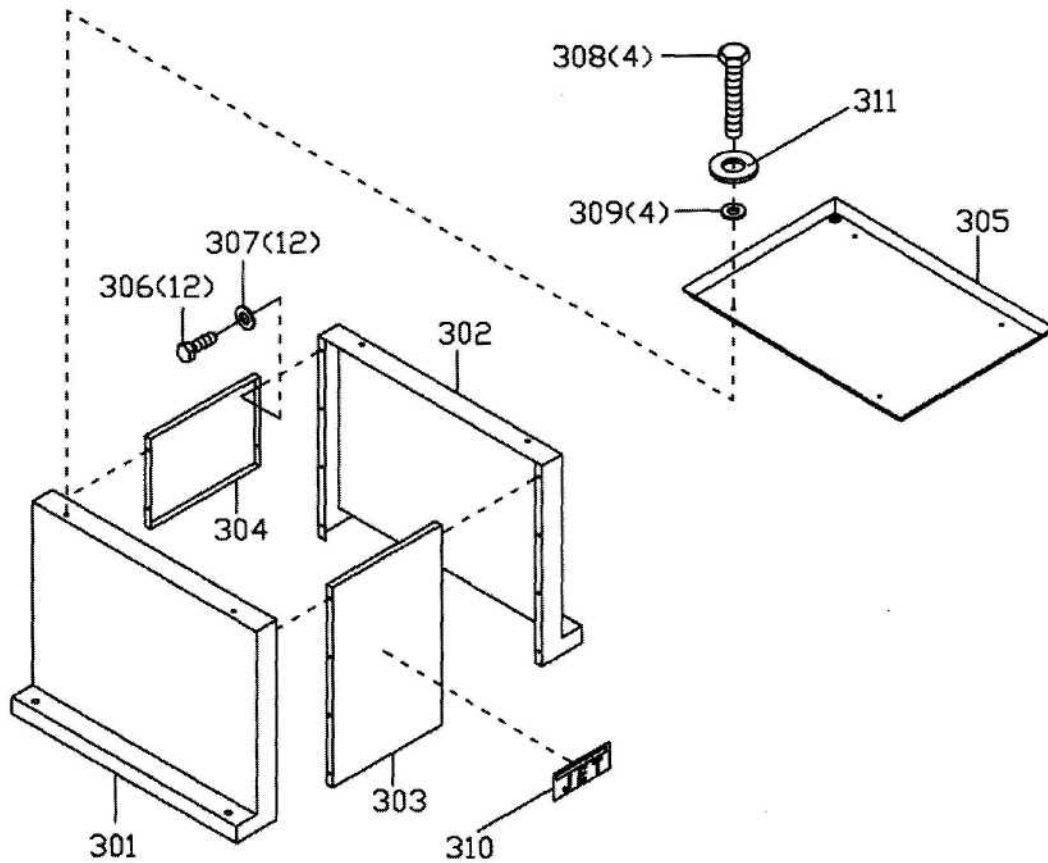
Table, Arm & Column Assembly

№	№ детали	обозначение	размер	кол-во
228	JRD460-228	Power Cable with Plug	H07RN-Fx1.0mm2	1
229	JRD460-229	Motor Cable	H07RN-Fx1.0mm2	1
230	JRD460-230	Limit Switch Cable	H05W-Fx0.75mm2	1
231	JRD460-231	Bracket for Switch		1
232	TS-2245102	Socket Head Button Screw	M5x10	2
233	TS-0810102	Pan Head Machine Screw	3/16"x1-3/4"	4

Contents of the Accessory Package:

№	№ детали	обозначение	размер	кол-во
	JMD18-022	Handle		1
	JMD18-040	Knob		2
	561704E	Drill Chuck w/Chuck Key	MT-3/B-16	1
	JMD18-021E	Chuck Arbor (Installed)	MT-3/B-16	1
	JMD18-012E	Punch Key		1
	TS-152704	Hex Wrench	3mm	1
	TS-152705	Hex Wrench	4mm	1
	TS-152706	Hex Wrench	5mm	1
	JMD18N-119E	Lifting Hook	M10x33.5	1
	MP-007	Touch Up Paint		1

Stand Assembly (Option)



Stand Assembly—Option

№	№ детали	обозначение	размер	кол-во
301	JRD460-301	Side Panel (left)		1
302	JRD460-302	Side Panel (right)		1
303	JRD460-303	Front Pane		1
304	JRD460-304	Rear Panel		1
305	JRD460-305	Shelf		1
306	TS-1482011	Hex Cap Screw	M6x10	12
307	TS-1550041	Flat Washer	M6	12
308	TS-1491061	Hex Cap Screw	M10x40	4
309	TS-1550071	Flat Washer	M10	4
310	JRD460-119	JET Logo		1
311	JRD460-311	Rubber Cushion		4

	colour of strands	Litzenfarben	couleur des cordons
BK	black	schwarz	noir
WH	white	weiß	blanc
BU	blue	blau	bleu
RD	red	rot	rouge
BN	brown	braun	brun
GNYE	green-yellow	grün-gelb	vert-jaune
GN	green	grün	vert

	meaning of symbol	Bedeutung der Zeichen	interprétation
KM	Magnetic contactor	Hauptschütz	contacteur
FU	fuse	Sicherung	fusible
L	lamp	Anzeigelampe	lampe d'indication
SE	emergency stop switch	Not-Aus Schalter	arrêt d'urgence
SB1	start button	Ein-Schalter	bouton marche
SC1	choice speed switch	Aus-Schalter	bouton arrêt
SC2	pump switch	Kühlmittel-Schalter	bouton pompe
SQ1	downer limit switch	Positionsendschalter	micro
M	main motor	Hauptmotor	moteur principal
P	pump	Kühlmittelmotor	moteur pompe
SQA	saw lid limit switch	Positionsendschalter	micro
SQB	tension limit switch	Positionsendschalter	micro

380/50/3

