



JWDS-1020-M

DRUM SANDER

JWDS-1020-M...723510M...1~230V, 50Hz

PARTS LIST

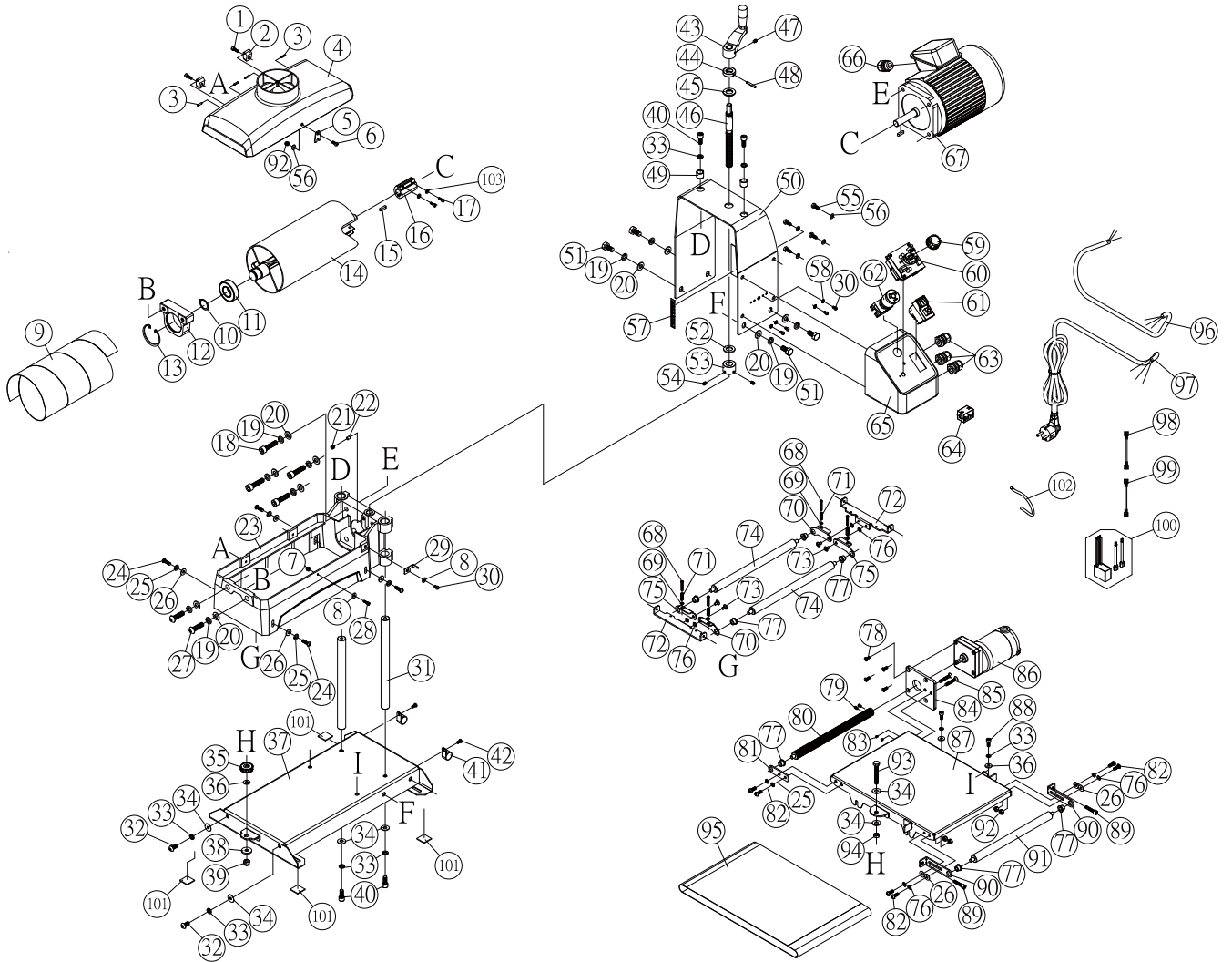
**JPW (Tool) AG
Ackerstrasse 45
CH-8610 Uster
Switzerland**

www.jettools.com

P-723510M 2019-11



JWDS-1020-M Drum Sander – Exploded View



JWDS-1020-M Drum Sander – Parts List

Index No	Part No	Description	Size	Qty
1	TS-1503041	Socket Head Cap Screw	M6 x 1.0P x 16L	2
2	JWDS1632-103	Drum Carriage Hinge		2
3	JWDS1632-103	Spring Pin	3 x 14L	4
4	JWDS1020-104	Dust Hood		1
5	JWDS1632-105E	Locking Plate		1
6	TS-1534042	Phillips Pan Hd Machine Screw	M6 x 1.0P x 12L	1
7	TS-1541011	Nylon Lock Hex Nut	M5 x 0.8P	1
8	TS-1550031	Flat Washer	5 x 12 x 1T	2
9	JWDS1020-109	Abrasive	#80 Grit	1
10	PM2244-112	C-Retainer Ring Ext. (Re:14A)	STW-25	1
11	PM2244-115	Ball Bearing (Re:14A)	6205VV	1
12	JWDS1020-112	Outboard Bearing Housing (Re:14A)		1
13	PM2244-114	C-Retainer Ring Int. (Re:14A)	RTW-52	1
14	JWDS1020-114	Drum (Re:14A)		1
14A	JWDS1020-114A	Drum Assembly (includes #10-17)		1
15	5519710	Key	5 x 5 x 20L	1
16	JWDS1020-116	Coupling		1
17	TS-1501051	Socket Head Cap Screw	M4 x 0.7P x 16L	2
18	TS-1505071	Socket Head Cap Screw	M10 x 1.5P x 45L	4
19	TS-2361101	Lock Washer	M10	10
20	TS-1550071	Flat Washer	10 x 20 x 2T	10
21	5302731	Socket Head Set Screw	M8 x 1.25P x 6L	1
22	PM2244-184	PU Block		1
23	JWDS1020-123E	Drum Carriage		1
24	TS-2246202	Socket Head Button Screw	M6 x 1.0P x 20L	4
25	TS-2361061	Lock Washer	M6	6
26	TS-1550041	Flat Washer	6.4 x 16 x 1.6T	8
27	TS-2249352	Socket Head Button Screw	M10 x 1.5P x 35L	2
28	TS-1502051	Socket Head Cap Screw	M5 x 0.8P x 20L	1
29	JWDS1020-129	Pointer		1
30	6290832	Phillips Pan Hd Machine Screw	M5 x 0.8P x 8L	1
31	JWDS1020-131	Guide Bar		2
32	TS-2248162	Socket Head Button Screw	M8 x 1.25P x 16L	2
33	TS-2361081	Lock Washer	M8	8
34	TS-1550061	Flat Washer	8.5 x 20 x 1.5T	6
35	JWDS1020-135	Knob		1
36	TS-1550061	Flat Washer	8.5 x 16 x 1.5T	3
37	JWDS1020-137	Base		1
38	TS-1550061	Flat Washer	8 x 25 x 3T	1
39	TS-1541031	Nylon Lock Hex Nut	M8 x 1.25P	1
40	F005403L	Socket Head Cap Screw w/thrdlckr	M8 x 1.25P x 20L	4
41	JWDS1020-141	Cable Holder	ACC-6 (19mm)	2
42	TS-1533032	Phillips Pan Hd Machine Screw	M5 x 0.8P x 10L	4
43	JWDS1632-137	Crank Handle		1
44	JWDS1632-145	Collar		1
45	JWDS1632-140	Oilite Washer		1
46	JWDS1632-141	Height Adjusting Screw		1
47	TS-1523031	Socket Head Set Screw	M6 x 1.0P x 10L	1
48	JWDS1632-146	Spring Pin	4 x 30L	1
49	JWDS1020-149	Spacer		2
50	JWDS1020-150	Motor Shroud		1
51	TS-1491021	Hex Cap Screw	M10 x 1.5P x 20L	4
52	JWDS1632-148	Nylon Washer		1
53	JWDS1632-149	Collar		1
54	TS-2276081	Socket Head Set Screw	M6 x 1.0P x 8L	2
55	F011767	Pan Hd Phillips Tapping Screw	#14 x 3/4L	4
56	TS-1550041	Flat Washer	6 x 12 x 1T	5

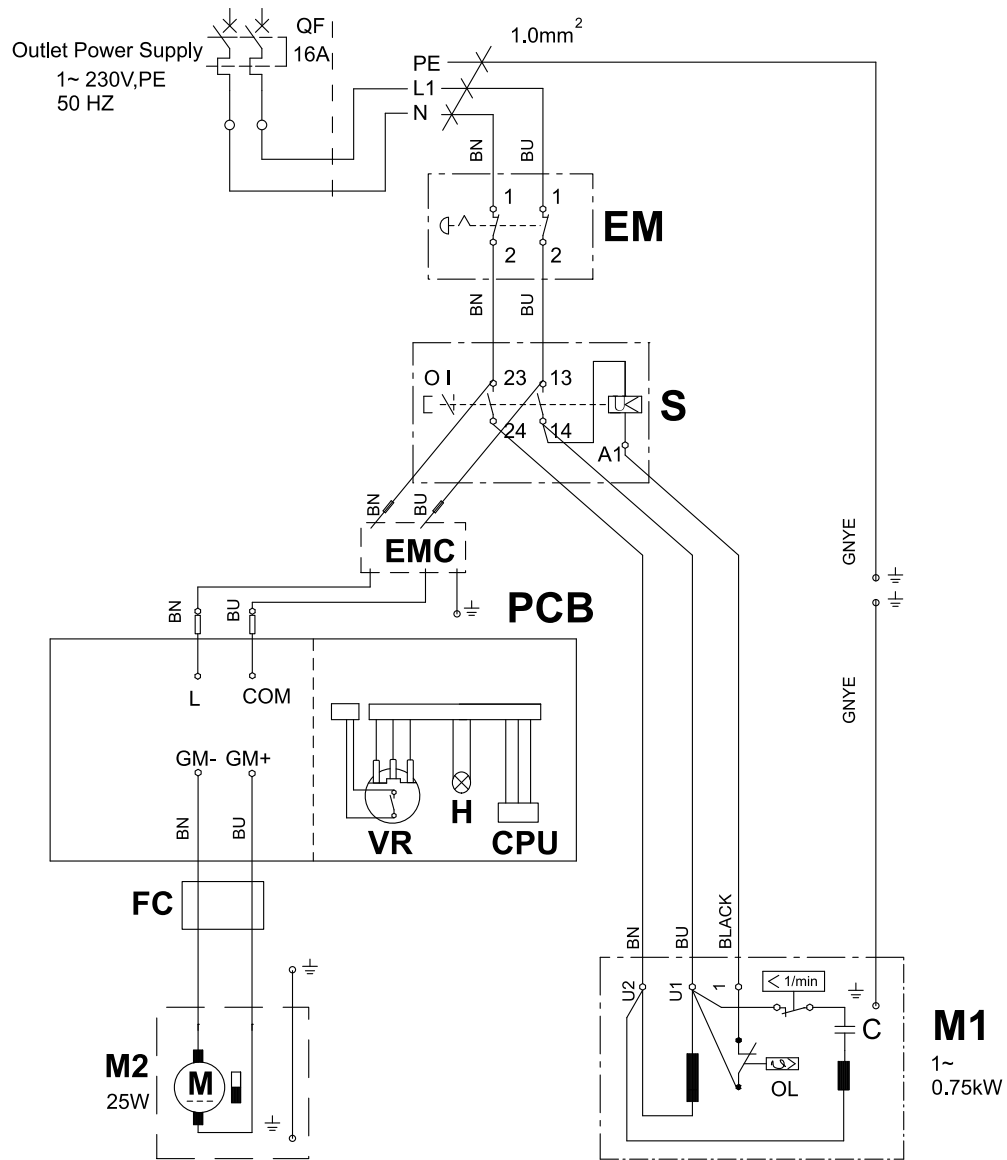
JWDS-1020-M Drum Sander – Parts List

Index No	Part No	Description	Size	Qty
57	JWDS1632-163E	Depth Scale		1
58	F002097	Lock Washer, Ext. Tooth	M5	4
59	PM2244-196	Knob		1
60	JWDS1020-160E	Circuit Board		1
61	JWDS1020-161E	Switch		1
62	JWDS2244-1107E	Emergency Stop		1
63	JWDS1632-153	Strain Relief	PG 11	3
64	JWDS2244-1109E	Ferrite Core for Belt Motor		1
65	JWDS1020-165E	Control Box (incl. Label)		1
66	JWDS1632-153	Strain Relief	M20SAL-2	1
67	JWDS1020-167E	Motor	0.75kW, 230V, 50Hz	1
	JWDS1020-167RCE	Running Capacitor (not shown)	12mF 450VAC	1
	JWDS1020-167FC	Fan Cover (not shown)		1
	JWDS1020-167CF	Cooling Fan (not shown)		1
	JWDS1020-167WBE	Wiring Box		1
	JWDS1020-167WBCE	Wiring Box Cover		1
68	JWDS1020-168	Phillips Round Head Machine Screw	M4 x 0.7P x 30L	4
69	TS-1550021	Flat Washer	4.2 x 8 x 0.8T	4
70	JWDS1020-170	Right Tension Roller Suspension Bracket		2
71	PM2244-125	Compression Spring		4
72	JWDS1020-172	Tension Roller Fixed Bracket		2
73	PM2244-132	Shoulder Screw		4
74	JWDS1020-174E	Tension Roller	Dia. 22mm	2
75	JWDS1020-175	Left Tension Roller Suspension Bracket		2
76	63049	Wave Washer	WW-6	12
77	PM2244-130	Oilite Bushing		7
78	F010678	Socket Head Flat Screw	#10-32UNC x 1/2in L	4
79	TS-1522011	Socket Head Set Screw	M5 x 0.8P x 5L	2
80	JWDS1020-180	Drive Roller		1
81	JWDS1632-208	Drive Roller Bracket		1
82	TS-2246162	Socket Head Button Screw	M6 x 1.0P x 16L	6
83	TS-1521021	Socket Head Set Screw	M4 x 0.7P x 5L	2
84	JWDS1632-204	Belt Motor Plate		1
85	F010985	Socket Head Flat Screw	M6 x 1.0P x 35L	2
86	JWDS1020-186E	Belt Motor	25W 230V	1
87	JWDS1020-187	Conveyor Table		1
88	TS-1504031	Socket Head Cap Screw	M8 x 1.25P x 16L	2
89	TS-1503071	Socket Head Cap Screw	M6 x 1.0P x 30L	2
90	JWDS1020-190	Take-up Slide Bracket		2
91	JWDS1020-191	Driven Roller		1
92	TS-1541021	Nylon Lock Hex Nut	M6 x 1.0P	5
93	TS-1490101	Hex Cap Screw	M8 x 1.25P x 55L	1
94	TS-2311081	Hex Nut	M8 x 1.25P	1
95	JWDS1020-195	Conveyor Belt		1
96	JWDS1632-190E	Motor Cable		1
97	JWDS1020-197E	Power Cable		1
98	JWDS2244-197E	Internal Connection Cable (Blue)	ST 16AWG x 1C x 15cm	1
99	JWDS2244-198E	Internal Connection Cable (Brown)	ST 16AWG x 1C x 15cm	1
100	JWDS1632-196E	EMC Filter		1
101	JWDS1020-1101	Foam Pad (set of 4)		4
102	JWDS1020-1102E	Seal Strip		1
103	TS-2361041	Lock Washer	M4	2
104	JWDS1632-104E	Incremental Depth Scale (not shown)		1
	JET-92	JET Logo (not shown)	92x38mm	1
	LM000238E	Warning Label, JWDS-1020-M (not shown)		1
	LM000386E	ID Label, JWDS-1020-M (not shown)		1
	LM000236E	Caution Label - Table Lock (not shown)		2

JWDS-1020-M Drum Sander – Parts List

Index No	Part No	Description	Size	Qty
.....	LM000387.....	Parallel Adjust Label (not shown)		1
.....	LM000388E.....	Motor Label, JWDS-1020-M (not shown)		1
.....	LM000389E.....	Belt Motor Label (not shown)		1
.....	LM000390E.....	Control Panel Label (not shown)		1

JWDS-2244-M.....723540SKM.....1~230V, 50Hz



	colour of strands	Litzenfarben	couleur des cordons
BK	black	schwarz	noir
WH	white	weiß	blanc
BU	blue	blau	bleu
YE	yellow	gelb	jaune
RD	red	rot	rouge
BN	brown	braun	brun
GY	grey	grau	gris
GNYE	green-yellow	grün-gelb	vert-jaune
OG	orange	orange	orange
VT	violet	violett	violet

	meaning of symbol	bedeutung der zeichen	interprétation
M1	motor	motor	moteur
M2	motor	motor	moteur
S	switch	schalter	interrupteur
EM	e-stop	not-Aus Taster	d'urgence
C	condenser	kondensator	condensateur
VR	potentiometer	potentiometer	potentiomètre
EMC	filter	filter	filtre
PCB	circuit board	leiterplatte	carte circuit
H	indication light	anzeigelicht	la lumière d'indication
F	ferrite core	ferritkerne	noyau de ferrite
OL	overload cut-off	Überlastschuttschalter	déclencheur surcharge



JPW (Tool) AG
Ackerstrasse 45, CH-8610 Uster
Switzerland